

# Contents of *The American Journal of Psychiatry*

December 1991

Volume 148

## **Special Articles**

The genetic epidemiology of bulimia nervosa. *Kenneth S. Kendler, Charles MacLean, Michael Neale, Ronald Kessler, Andrew Heath and Lindon Eaves* 1627

Neurasthenia and chronic fatigue syndrome: the role of culture in the making of a diagnosis. *Susan E. Abbey and Paul E. Garfinkel* 1638

A psychobiological perspective on the personality disorders. *Larry J. Siever and Kenneth L. Davis* 1647

## **Regular Articles**

Risk factors for homelessness among patients admitted to a state mental hospital. *Ezra S. Susser, Shang P. Lin and Sarah A. Conover* 1659

Childhood origins of self-destructive behavior. *Bessel A. van der Kolk, J. Christopher Perry and Judith Lewis Herman* 1665

Reliability of the Part II Board Certification Examination in Psychiatry: interexaminer consistency. *John F. McDermott, Jr, Peter E. Tanguay, Stephen C. Scheiber, Dorthea Juul, James H. Shore, Gary J. Tucker, Layton McCurdy and Lenore C. Terr* 1672

Abnormal caloric requirements for weight maintenance in patients with anorexia and bulimia nervosa. *Theodore E. Weltzin, Madelyn H. Fernstrom, Donna Hansen, Claire McConaha and Walter H. Kaye* 1675

Absence of linkage between chromosome 11p15 markers and manic-depressive illness in a Belgian pedigree. *Julien Mendlewicz, Marion Leboyer, An De Bruyn, Alain Malafosse, Serge Sevy, Denis Hirsch, Christine Van Broeckhoven and Jacques Mallet* 1683

How the medical comorbidity of depressed patients differs across health care settings: results from the medical outcomes study. *Kenneth B. Wells, William Rogers, M. Audrey Burnam, Sheldon Greenfield and John E. Ware, Jr* 1688

New methods in cross-cultural psychiatry: psychiatric illness in Taiwan and the United States. *Wilson M. Compton III, John E. Helzer, Hai-Gwo Hwu, Eng-Kung Yeh, Larry McEvoy, Jayson E. Tipp and Edward L. Spitznagel* 1697

Comorbid association of autism and schizophrenia. *Fred R. Volkmar and Donald J. Cohen* 1705

Cocaine-induced paranoia and psychosis proneness. *Sally L. Satel and William S. Edell* 1708

Clinical phenomenology and neurobiology of cocaine abstinence: a prospective inpatient study. *Sally L. Satel, Lawrence H. Price, Joseph M. Palumbo, Christopher J. McDougale, John H. Krystal, Frank Gawin, Denis S. Charney, George R. Heninger and Herbert D. Kleber* 1712

The frequency of multiple personality disorder among psychiatric inpatients. *Colin A. Ross, Geri Anderson, William P. Fleisher and G. Ron Norton* 1717

Psychiatric status of patients with primary fibromyalgia, patients with rheumatoid arthritis, and subjects without pain: a blind comparison of DSM-III diagnoses. *Tim A. Ahles, Shaukat A. Khan, Muhammad B. Yunus, David A. Spiegel and Alfonse T. Masi* 1721

## **Clinical and Research Report**

Seasonal variation in obsessive-compulsive disorder: preliminary experience with light treatment. *T. Hakan Yoney, Teresa A. Pigott, Francine L'Heureux and Norman E. Rosenthal* 1727

# Contents of *The Journal of Nervous and Mental Disease*

December 1991

Volume 179

Decision making in clinically depressed patients: a transcultural social psychological study. <i>Mark H. B. Radford, Yoshibumi Nakane, Yasuyuki Ohta, Leon Mann and Ross S. Kalucy</i>	711
Neurochemical mechanisms of chronic antisocial behavior (psychopathy): a literature review. <i>Collins E. Lewis</i>	720
Post-traumatic stress disorder, depression, and somatic symptoms in US MIEN patients. <i>Laurie J. Moore and James K. Boehnlein</i>	728
Psychotherapy for dysthymia: a naturalistic study of ten patients. <i>James P. McCullough</i>	734
Dynamic treatment of pain disorder: a review. <i>Barbara Milrod and M. Katherine Shear</i>	741
Neuropsychological deficits in chronic schizophrenics: relationship with symptoms and behavior. <i>Faith B. Dickerson, Norman B. Ringel and John J. Boronow</i>	744
Involvement in an outreach and residential treatment program for homeless mentally ill veterans. <i>Robert Rosenheck and Peggy Gallup</i>	750
Low dose desipramine treatment of cocaine-related panic attacks. <i>Alexander Bystritsky, Deborah L. Ackerman and Robert O. Pasnau</i>	755
<b>Books.</b> Mirowsky, J. and Ross, C. E. <i>Social Causes of Psychological Distress</i> ; Mays, V. M., Albee, G. W. and Schneider, S. F. (eds) <i>Primary Prevention of AIDS: Psychological Approaches</i> ; Rogler, L. H., Malgady, R. G. and Rodriguez, O. <i>Hispanics and Mental Health: A Framework for Research</i> ; Fisher, S. and Greenberg, R. P. (eds) <i>The Limits of Biological Treatments for Psychological Distress: Comparisons with Psychotherapy and Placebo</i> ; Young-Bruehl, E. <i>Mind and the Body Politic</i> ; Wolf, M. E. and Mosnaim, A. D. <i>Post-Traumatic Stress Disorder: Etiology, Phenomenology, and Treatment</i>	759

## Subscriptions

Non-members of the College should contact the British Journal of Psychiatry Subscription Department, The Royal Society of Medicine, 1 Wimpole Street, London W1M 8AE. Annual subscription rates for 1992 (12 issues post free) are as follows:

UK: institutions £130,  
individuals £105

US: institutions \$285,  
individuals \$185

Elsewhere: institutions £154,  
individuals £123

Single copies of the Journal are £12, \$20 (post free).

Payment should be made out to the British Journal of Psychiatry.

Queries from non-members about missing or faulty copies should be addressed within six months to the same address; similar queries from College members should be addressed to the Registration Department, The Royal College of Psychiatrists, 17 Belgrave Square, London SW1X 8PG.

## Advertising

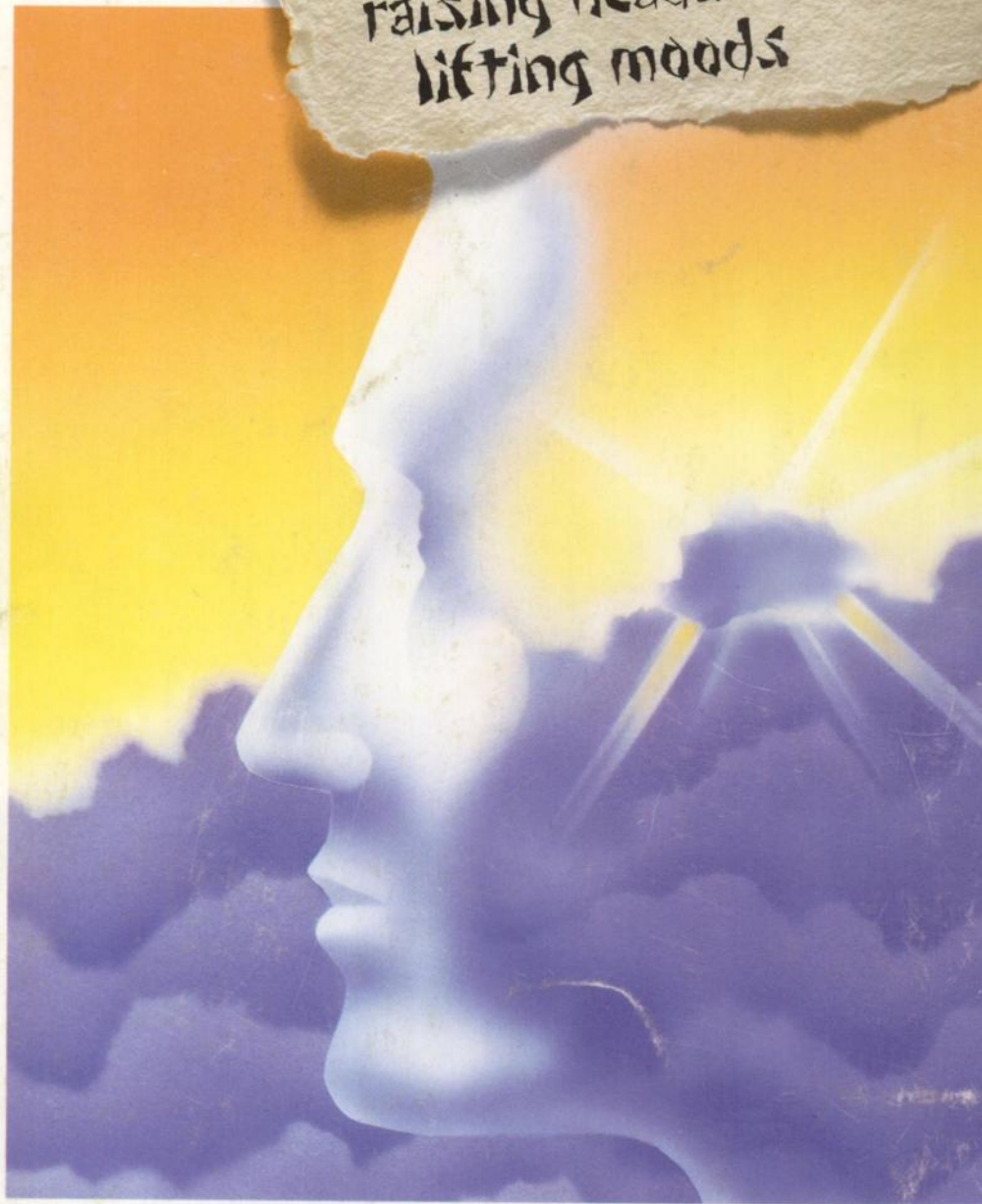
Correspondence and copy should be addressed to Peter T. Mell, Advertising Manager,

PTM Publishers Ltd, 282 High Street, Sutton, Surrey SM1 1PQ (tel. 081-642 0162, fax 081-643 2275).

Skies surrender to  
an upward glance  
raising heads  
lifting moods



Lundbeck  
FACING  
THE  
FUTURE  
TOGETHER



DEPOT  
**DEPIXOL**<sup>®</sup>  
cis(Z)-flupenthixol decanoate

For the withdrawn schizophrenic

Further information is available on request from: Lundbeck Ltd, Lundbeck House, Hastings Street, Luton, Beds LU1 5BE