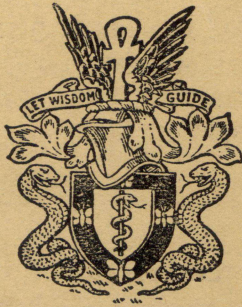


THE JOURNAL OF MENTAL SCIENCE

(THE BRITISH JOURNAL OF PSYCHIATRY)



BY AUTHORITY OF
THE ROYAL MEDICO-PSYCHOLOGICAL ASSOCIATION

EDITOR-IN-CHIEF

G. W. T. H. FLEMING

CO-EDITORS

Alexander Walk and P. K. McCowan

AND WITH THE ASSISTANCE OF

E. D. Adrian	F. L. Golla
W. Ross Ashby	C. J. McCarthy
Sir F. C. Bartlett	Alfred Meyer
Sir Hugh Cairns	Lionel S. Penrose
W. E. le Gros Clark	A. A. W. Petrie
S. M. Coleman	Derek Richter
C. J. C. Earl	E. T. O. Slater
Sir A. Fleming	

LONDON

J. & A. CHURCHILL, LTD

Published Four times Yearly Twelve Shillings and Sixpence net

THE JOURNAL OF MENTAL SCIENCE

Communications on general editorial matters, including MSS. for publication, books for review and other printed matter, and communications regarding the *Epitome* section, including journals to be abstracted, should be sent to the **Editor-in-Chief, Barnwood House, Gloucester.**

Communications and inquiries regarding sales should be addressed to the Publishers, **Messrs. J. & A. CHURCHILL, Ltd., 104, Gloucester Place, Portman Square, London, W.1;** and those regarding Advertisements to **Messrs. S. & H. FRETWELL, Ltd., 92, Fleet Street, London, E.C.4.** Phone: Central 5587/8.

THE ROYAL MEDICO-PSYCHOLOGICAL ASSOCIATION.

PUBLICATIONS.

From MESSRS. ADLARD & SON, LTD.,
Bartholomew Press, Dorking, Surrey.

Enquiry (History) Form, for use in Mental Hospitals. In three sizes. Prices and specimen forms on application.

From MESSRS. J. & A. CHURCHILL, LTD.,
104 Gloucester Place, W. 1

'The Journal of Mental Science.' Published four times a year. Price 12/6. Postage extra.

From MESSRS. BAILLIÈRE, TINDALL & COX,
8 Henrietta Street, W.C. 2

'Handbook for Mental Nurses.' 8th edn. In preparation.

'Manual for Mental Deficiency Nurses.' 1931. Price 6/6 net.

'Occupational Therapy.' Addendum to "Handbook." 1938. Price 6d.

From the REGISTRAR, Southfield, Shipton Road, York.

'Regulations and Rules for the Nursing Examinations.' Revised, 1938. Price 9d. each. Postage 1d.

'Examination Papers, 1928-38.' Price 9d. each. Postage 1d.

'Regulations for the D.P.M. of the R.M.P.A.'

From the SECRETARY, 11 Chandos Street, W. 1.

The Charter and By-Laws of the Association. Price 2/- Postage 1½d.

FIRMEST BASIS for THYROID THERAPY

THE THYROID hormone in pure crystalline form can alone bring *therapeutic consistency* and *accurate dosage* to thyroid therapy.

THAT IS THE importance of L-THYROXINE-SODIUM *Glaxo*. Product of a synthesis evolved in Glaxo Laboratories, it presents thyroxine in its most active form, capable of reliable and consistent absorption by mouth.

L-THYROXINE-SODIUM *Glaxo*

Tablets (0.05 mg. and 0.1 mg.): in bottles of 100 & 1,000



today's treatment for MYXOEDEMA,

CRETINISM and all HYPOTHYROID STATES

GLAXO LABORATORIES LTD., GREENFORD, MIDDLESEX BYRON 3434

MENTAL HOSPITALS, INSTITUTIONS, HOMES, ETC.

CHEADLE ROYAL CHEADLE,
CHESHIRE

A Registered Hospital for MENTAL DISEASES, and its
Seaside Branch, GLAN-Y-DON, Colwyn Bay, N. Wales.

THE object of this Hospital is to provide the most efficient means for
the treatment and care of PRIVATE PATIENTS OF BOTH
SEXES suffering from MENTAL and NERVOUS DISEASES.
The Hospital is governed by a Committee appointed by Trustees.

VOLUNTARY, TEMPORARY and CERTIFIED PATIENTS
RECEIVED.

For Terms and further information apply to the MEDICAL SUPERINTENDENT.
Telephone: GATLEY 2231.

CHISWICK HOUSE Phone: PINNER 234
PINNER,
MIDDLESEX
A Private Hospital for the Treatment and Care
of Mental and Nervous Illnesses in Both Sexes.

A modern country house, 12 miles from Marble Arch, in attractive and secluded surroundings.
Fees from 10 guineas per week inclusive.
Cases under certificate, Voluntary and "Temporary" Patients received for treatment.

DOUGLAS MACAULAY, M.D., D.P.M.

HITCHAM PLACE, BURNHAM, BUCKS.

(late Fenstanton, Christchurch Road, S.W.2)

A Private Home for the Care and Treatment of a limited number of Ladies with Mental
and Nervous Disorders. Temporary and Voluntary Patients received. Large Country
Mansion with twenty acres of grounds in Green Belt. Home-like surroundings.

Apply: Dr. Madeline R. Lockwood, Resident Physician. Telephone: Burnham 624.

HAYDOCK LODGE, NEWTON-LE-WILLOWS,
LANCASHIRE

For the reception and treatment of PRIVATE PATIENTS of both sexes of the UPPER AND MIDDLE
CLASSES suffering from Mental and Nervous Disorders, Alcoholism and Drug Addiction, either voluntary,
temporary or under certificate. Patients are classified in separate buildings according to their mental condition.

Situated in park and grounds of 400 acres. Self-supported by its own farm and gardens in which patients
are encouraged to occupy themselves. Every facility for indoor and outdoor recreation. For terms, prospectus,
etc., apply MEDICAL SUPERINTENDENT.

Telegraphic Address: "Street," Ashton-in-Makerfield.

Phone: 7311 Ashton-in-Makerfield.

HEIGHAM HALL, NORWICH

PRIVATE MENTAL HOME for Nervous and Mental illness. All
types of treatment carried out. Accommodation for Alcoholics
and Addicts available. Special Geriatric Unit now open.

Fees from 6 gns. per week upwards according to requirements.

Apply to Dr. J. A. SMALL.

Telephone: Norwich 20080.

•••• SELECTIONS from our CATALOGUE ••••

THE SPRINGS OF CONDUCT: A Neuro-Psychological Study

By Sir JOHN PARSONS, C.B.E., D.Sc., F.R.C.S., F.R.S. 7s. 6d.

MODERN PSYCHIATRY IN PRACTICE

By W. LINDESAY NEUSTATTER, M.D., M.R.C.P., B.Sc. *Second Edition.* 12s. 6d.

THE ADOLESCENT CRIMINAL A Medico-Sociological Study of Four Thousand Male Adolescents

By Sir NORWOOD EAST, M.D.(Lond.), F.R.C.P. (Lond.) in collaboration with P. STOCKS, M.D., and H. T. P. YOUNG, O.B.E., M.B. 112 Tables. 45s.

TAYLOR'S PRINCIPLES & PRACTICE OF MEDICAL JURISPRUDENCE

Tenth Edition. Edited by Sir SYDNEY SMITH, C.B.E., M.D., F.R.C.P. With a revision of the Legal Aspect by W. G. H. COOK, LL.D., and of the Chemical Aspect by C. P. STEWART, Ph.D., D.Sc. Vol. I. 48 illustrations 45s. Vol. II. 45s.

THE MEDICAL DIRECTORY 1951

107th Annual issue. Now ready. Contains details of 79,672 practitioners. In two parts. 63s. per set.

THE LAW RELATING TO MENTAL TREATMENT AND THE HEALTH SERVICE

By HAROLD BERRY 8s. 6d.

FORENSIC MEDICINE: A Textbook for Students and Practitioners

By Sir SYDNEY SMITH, C.B.E., M.D., F.R.C.P., and F. S. FIDDES, O.B.E., M.D. *Ninth Edition.* 173 Illustrations 30s.

MARRIAGE COUNSELLING The First Full Account of the Remedial Work of Marriage Guidance Councils

By DAVID MACE, M.A., B.Sc., Ph.D. 8s.

OUT OF WORKING HOURS: Medical Psychology on Special Occasions

By H. YELLOWLEES, O.B.E., M.D., F.R.C.P., D.P.H. 10s. 6d.

APPLIED MEDICINE: Descriptive Cases and Cases Demonstrated at the Bedside by Question and Answer

By G. E. BEAUMONT, M.A., D.M., F.R.C.P., D.P.H. 74 illustrations, including 2 colour plates. 30s.

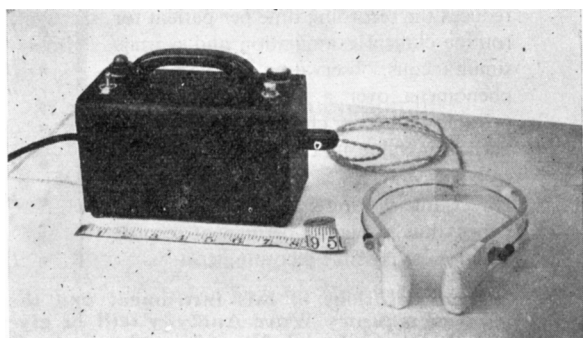
J. & A. CHURCHILL LTD., 104 GLOUCESTER PLACE, LONDON, W.1

'ECTRON' ELECTRO-CONVULSANT APPARATUS

The ideal portable apparatus for administration of all forms of ECT from A.C. or D.C. mains.

Specially designed to give smooth induction of convulsion, to reduce risk of fractures.

In worldwide use by many psychiatrists, and leading mental hospitals.



NOW AVAILABLE—'Ectron' moulded rubber mouth Gags.

Write for details to:

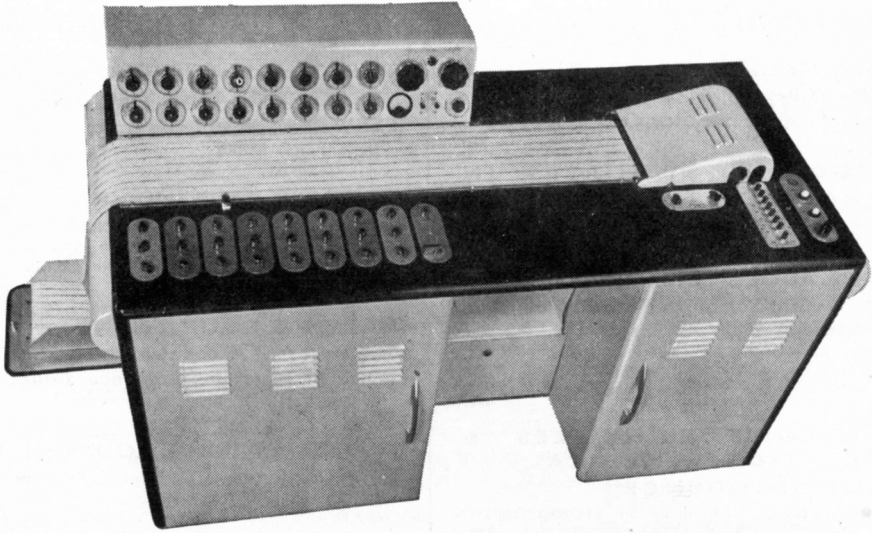
ECTRON LIMITED

REELEK WORKS, BALDOCK, HERTS., ENGLAND

Telegrams: "Reelek" Baldock

Telephone: Baldock 154

a§



The first British 8 Channel Electro Encephalograph

The Ediswan Mark II 8-channel Electro-Encephalograph is intended to cater both for the clinical requirements of most Hospitals, and for research purposes where a higher standard of performance is essential.

The provision of 8 channels considerably reduces the recording time per patient for routine clinical examination and permits simultaneous observation of occasional phenomena over a larger area than is possible with fewer channels, this being of particular value in the location of focal activity.

Direct ink writing is used on 8" wide paper, thus providing permanent records with lowest possible recording cost.

The Ediswan Mark II Electro-Encephalograph provides:

- 8 channels.
- *New Precision Moving Coil Recorder (substantially flat response up to 100 c/s).*
- *Built-in Input Selector Unit.*
- *High Stability—no Stabilising Transformer needed.*
- *Semi-tropical Rating.*
- *Twin Time Markers.*
- *High Reliability with Simple Maintenance.*
- *Low Cost per Channel.*

Demonstrations of this instrument and the Ediswan Automatic Low Frequency Wave Analyser will be given to qualified visitors only on Stand No. 63 at the Radio Show, Earls Court, August 29th—September 8th, 1951

EDISWAN

THE EDISON SWAN ELECTRIC COMPANY LTD., 155 CHARING CROSS ROAD, LONDON, W.C.2
Member of the A.E.I. Group of Companies. EM13

A Sedative in all Nervous Affections

ELIXIR GABAIL

- *Hysteria*
- *Neurasthenia*
- *Climacteric troubles*
- *Anxiety neurosis*
- *Nervous hyposomnia*
- *Hypochondriasis*
- *Emotive disturbances*

A pleasant and palatable combination of BROMIDE and CHLORAL HYDRATE with nervine anti-spasmodic VALERIANATE, the disagreeable odour and flavour of the Valerian having been completely removed without in any way impairing its medicinal value.

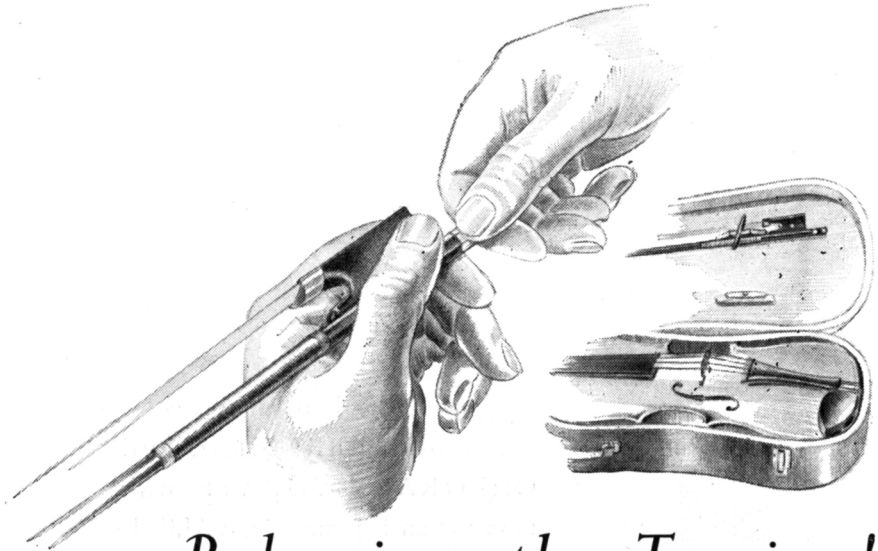
Dosage : One tablespoonful in water twice or thrice daily.

As an hypnotic : Two-tablespoonfuls at bedtime.

Supplied in bottles of 187 c.c., 16 oz., and in bulk for Hospital use.

Literature and Sample on request.

THE ANGLO-FRENCH DRUG CO. LTD.
11-12 GUILFORD STREET, LONDON, W.C.1



Releasing the Tension!

In the symptomatic treatment of the many disorders resulting from nervous stress, sub-hypnotic doses of 'AMYTAL' ease the tension. They provide a mild sustained cerebral depression without diminishing intellectual capacity. Independent of normally functioning kidneys for their elimination, sedative doses of 'AMYTAL' are entirely destroyed within the body each day. The cumulative effect of longer-acting barbiturates—giving rise to daytime drowsiness, irritability and mental confusion—is thus not experienced with 'AMYTAL.' To relieve nervous tension without jeopardising daytime alertness the physician can safely prescribe 'AMYTAL.'

Lilly
TRADE MARK

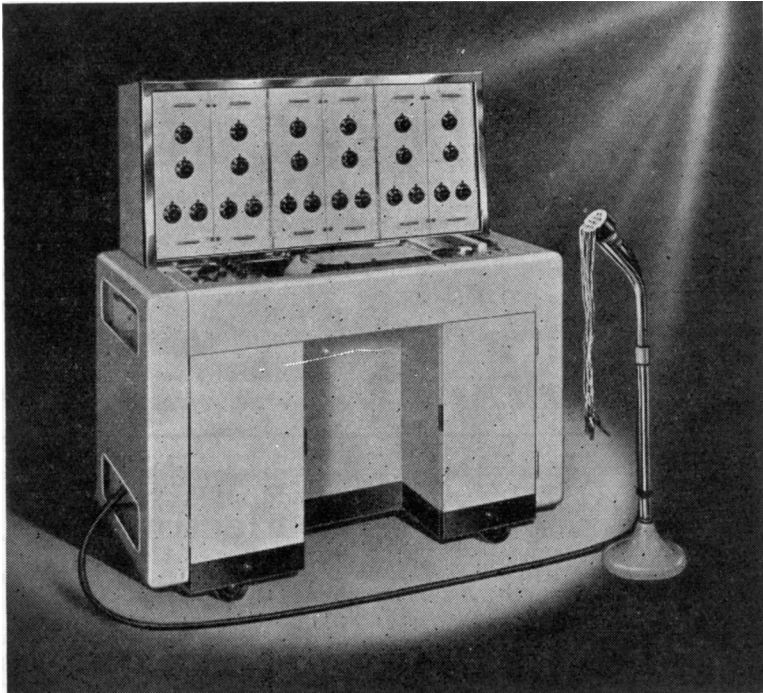
TRADE
MARK

'AMYTAL'
AMYLOBARBITONE

BRAND

ELI LILLY AND COMPANY LIMITED · BASINGSTOKE · HANTS

The Finer Points of the
MARCONI
Electro-Encephalograph



TYPE OA I80 A.

- ★ Six Channel 3-speed Recordings with Marker and Timing Pens.
- ★ Balanced High Gain Amplifiers.
- ★ Controls easily accessible for Sensitivity, Response and Electrode Selection.
- ★ Time Constant down to 1 second and Frequency Response extends up to 95 cycles for Direct Recording. Amplification facility up to 5000 c/s.
- ★ Calibrating Pulses from 5 to 1000 uV.
- ★ An adjustable Floor Stand with fifteen non-polarisable silver/silver chloride Head Electrodes.

MARCONI INSTRUMENTS LTD.

ST. ALBANS, HERTFORDSHIRE. Telephone: ST. ALBANS 6161/7

London Office: MARCONI HOUSE, STRAND, W.C.2.

Midland Office: 19 THE PARADE, LEAMINGTON SPA. Northern Office: 30 ALBION STREET, HULL.

ADLARD & SON

LIMITED

**BARTHOLOMEW PRESS
DORKING — SURREY**

**PRINTERS
OF THIS ::
:: JOURNAL**

ESTIMATES SUBMITTED PROMPTLY

FOUNDED IN 1766, the Firm has continued uninterruptedly, and is able to undertake **ALL CLASSES OF PRINTING**.

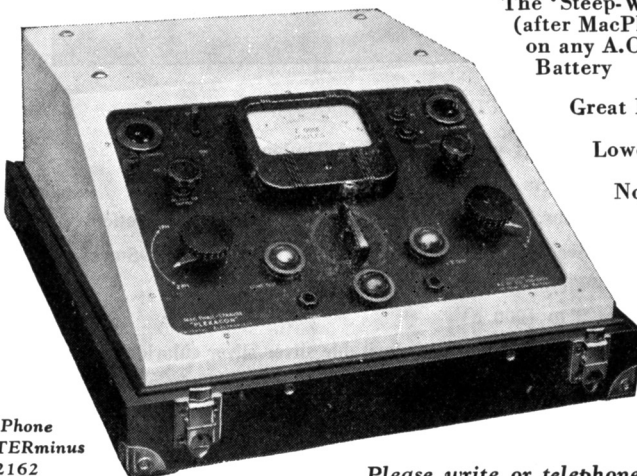
The Staff is Specially Trained in the production of all printed matter connected with **Private Hospitals and Homes, Medical, Scientific and other Institutions**.

Regd. Offices: 194/200 BISHOPSGATE, E.C. 2.

Tel.: DORKING 3874.

The PLEXACON Universal Electropexy Unit

—the only apparatus designed to operate from A.C. or D.C. mains without the use of a rotary converter



The 'Steep-Wave' Electropexy Unit (after MacPhail & Strauss) operates on any A.C. or D.C. Supply or 12v. Battery

Great Electrode Simplification

Lowest Traumatic Incidence

No Timing Gear or Valves

Dosage Independent
of Supply Conditions

Absolute Dosage

Portable

Also available :

The Plexacon Electropexy Unit
for A.C. [mains operation only]

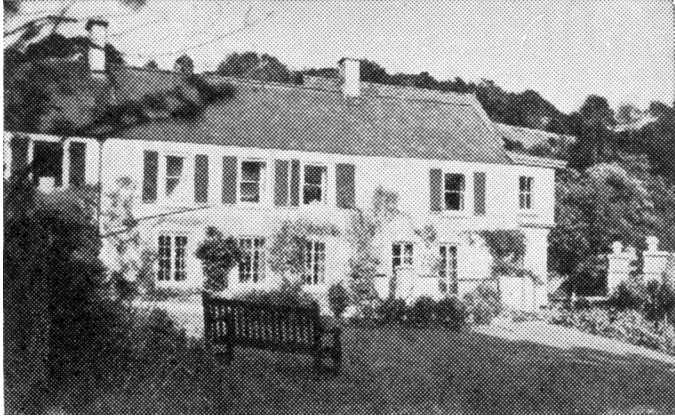
'Phone
TERminus
2162

Please write or telephone for further particulars

THERATRONICS Ltd. (Dept. B. 1), 6 Argyle Walk, London, W.C. 1

BARNWOOD HOUSE

GLOUCESTER



CRICKLEY COURT—ONE OF THE SEPARATE VILLAS

A REGISTERED HOSPITAL, (outside the National Health Service) for the CARE and TREATMENT of LADIES and GENTLEMEN suffering from NERVOUS and MENTAL DISORDERS. Within two miles of the Western and London Midland Regional Railway Stations at Gloucester, the Hospital is easily accessible by rail from London and all parts of the United Kingdom. It is beautifully situated at the foot of the Cotswold Hills, and stands in its own grounds of over 300 acres. Voluntary Patients of both sexes are also received for treatment. Special accommodation is also provided at three villa residences, all of which stand in their own grounds and are entirely separate from the main Hospital. All the most modern methods of treatment including electric shock and prefrontal leucotomy are used.

For Terms, etc., apply to

G. W. T. H. FLEMING, M.R.C.S., L.R.C.P., D.P.M.,
Physician Superintendent,

who may be seen in London by appointment

TELEPHONE: No. 66207 GLOUCESTER

in
Parkinson's syndrome

trade mark **'LYSIVANE'** *brand*

ethopropazine hydrochloride

a new synthetic drug, has been shown to give symptomatic improvement in the varied manifestations of the condition, and its beneficial effect is apparent in both idiopathic and post-encephalitic cases.

The benefit obtained is evidenced by decreased rigidity and increased mobility. In those cases that show improvement the main result of treatment is that posture, gait, facies, speech and everyday muscular activity tend to improve and in some cases actually return to normal.

'Lysivane' is supplied in containers of
50 and 500 x 50 mgm. tablets.



manufactured by

MAY & BAKER LTD

distributors

PHARMACEUTICAL SPECIALITIES (MAY & BAKER) LTD., DAGENHAM

INSTRUCTIONS TO AUTHORS

Strict observation of the following requirements will save intending authors considerable time and worry, and will facilitate the publication of papers submitted.

(1) Authors should consult a current issue to see how a paper should be presented. They should consult *General Notes on the Preparation of Scientific Papers*, published for the Royal Society by the Cambridge University Press, 200, Euston Road, London, N.W.1 (price 2s. 9d. post free).

(2) The title should be brief and contain no sub-heading. This should be followed by the author's name, his qualifications and his present appointment.

(3) Omit a summary of the literature when this has been adequately summarized elsewhere.

(4) For reasons of economy, case-histories of patients can be published only when they are of exceptional scientific interest.

(5) Diagrams and graphs must be drawn in black ink with properly printed lettering. If they have to be redrawn by the printer, the cost, which may amount to several pounds, will be charged to the author.

(6) Tables and graphs should be kept as few as possible. If they number more than a few, the author must be prepared to pay part of their cost.

(7) Data should be dealt with in a proper statistical manner, i.e. there should be stated the number of individual results, their mean value, the standard error of the mean and the extreme range of values.

(8) All references should be given at the end of the paper, in alphabetical order, and in the following form :

SMITH, A. B., *J. Ment. Sci.*, 1950, **95**, 493.

In the body of the paper they should appear as : Smith (1950).

(9) When the proof arrives from the printer it is for the correction of printer's mistakes only. Larger alterations can be made only with the Editor's permission and if the author is willing to defray the cost.

(10) The author will receive 6 reprints of his paper free of charge. If further reprints are required the order should be sent **direct** to Messrs. Adlard & Son, Ltd., Bartholomew Press, Dorking, Surrey.

(11) A paper sent to the Editor-in-Chief is, as a rule, sent to one of the panel of Referees set out on the cover of the Journal for his opinion. Papers are not rejected by the Editor-in-Chief until a second or further opinions have been received.