

INFECTION CONTROL & HOSPITAL EPIDEMIOLOGY

30th ANNIVERSARY YEAR

VOLUME 31, NUMBER 7

JULY 2010

ORIGINAL ARTICLES

- 669 **Charting the Course for the Future of Science in Healthcare Epidemiology: Results of a Survey of the Membership of the Society of Healthcare Epidemiology of America** • Research Committee of the Society of Healthcare Epidemiology of America; Ninet Sinaii, PhD
- 676 **Differences in the Epidemiological Characteristics and Clinical Outcomes of Pandemic (H1N1) 2009 Influenza, Compared with Seasonal Influenza** • Kevin T. Shiley, MD; Gregory Nadolski, MD; Timothy Mickus, MD; Neil O. Fishman, MD; Ebbing Lautenbach, MD, MPH, MSCE
- 683 **Failure of Routine Diagnostic Methods to Detect Influenza in Hospitalized Older Adults** • H. Keipp Talbot, MD, MPH; John V. Williams, MD; Yuwei Zhu, MD, MS; Katherine A. Poehling, MD, MPH; Marie R. Griffin, MD, MPH; Kathryn M. Edwards, MD
- 689 **Determinants of Influenza Vaccination among Healthcare Workers** • Gaston Godin, PhD; Lydi-Anne Vézina-Im, MS; Herminé Naccache, MS
- 694 **Predictive Ability of Positive Clinical Culture Results and International Classification of Diseases, Ninth Revision, to Identify and Classify Noninvasive *Staphylococcus aureus* Infections: A Validation Study** • LaRee A. Tracy, MA, PhD; Jon P. Furuno, PhD; Anthony D. Harris, MD, MPH; Mary Singer, MD, PhD; Patricia Langenberg, PhD; Mary-Claire Roghmann, MD, MS
- 701 **Variation in the Type and Frequency of Postoperative Invasive *Staphylococcus aureus* Infections According to Type of Surgical Procedure** • Deverick J. Anderson, MD, MPH; Jean Marie Arduino, PhD; Shelby D. Reed, PhD; Daniel J. Sexton, MD; Keith S. Kaye, MD, MPH; Chelsea A. Grussemeyer, BSPH; Senaka A. Peter, MPH; Chantelle Hardy, BA; Yong Il Choi, MSN; Joelle Y. Friedman, MPA; Vance G. Fowler, Jr, MD, MHS
- 710 **Lack of Increased Colonization with Vancomycin-Resistant Enterococci during Preferential Use of Vancomycin for Treatment during an Outbreak of Healthcare-Associated *Clostridium difficile* Infection** • Mark Miller, MD; Lisa Bernard, MSc; Melissa Thompson, MBA; Daniel Grima, MSc; Jocelyne Pepin, MSc Pharmacy
- 716 **Frequent Multidrug-Resistant *Acinetobacter baumannii* Contamination of Gloves, Gowns, and Hands of Healthcare Workers** • Daniel J. Morgan, MD; Stephen Y. Liang, MD; Catherine L. Smith, MD; J. Kristie Johnson, PhD; Anthony D. Harris, MD, MPH; Jon P. Furuno, PhD; Kerri A. Thom, MD, MS; Graham M. Snyder, MD; Hannah R. Day, MS; Eli N. Perencevich, MD, MS
- 722 **Impact of Education and an Antifungal Stewardship Program for Candidiasis at a Thai Tertiary Care Center** • Anucha Apisarntharak, MD; Apiwat Yatrasert, MD; Linda M. Mundy, MD, PhD; Thammasat University Antimicrobial Stewardship Team
- 728 **Changes in the Incidences of Multidrug-Resistant and Extensively Drug-Resistant Organisms Isolated in a Military Medical Center** • Edward F. Keen III, PhD; Clinton K. Murray, MD; Brian J. Robinson, MS; Duane R. Hospenthal, MD, PhD; Edgie-Mark A. Co, PhD; Wade K. Aldous, PhD
- 733 **Antimicrobial Efficacy of 3 Oral Antiseptics Containing Octenidine, Polyhexamethylene Biguanide, or Citroxx: Can Chlorhexidine Be Replaced?** • Nadine Rohrer, DDS; Andreas F. Widmer, MD, MS; Tuomas Waltimo, DDS; Eva M. Kulik, PhD; Roland Weiger, DDS; Elisabeth Filipuzzi-Jenny, MT; Clemens Walter, DDS



THE OFFICIAL JOURNAL OF THE SOCIETY FOR HEALTHCARE EPIDEMIOLOGY OF AMERICA

CONTENTS CONTINUED INSIDE

A stitch in time saves.

BD Protect™ Infection Prevention

provides critical HAI-related information when time matters most.

24/7 surveillance provides alerts and reports to help you

- make treatment and isolation decisions faster
- respond more quickly to unfolding infection-related events
- identify new MDROs to reduce risk of transmission

On demand reports support your quality improvement goals

- analyze trends, create reports and graphs
- investigate outbreaks
- track process compliance

NHSN-compliant tools electronically

- collect and validate denominator and HAI data
- benchmark and report to NHSN



BD

Helping all people
live healthy lives

Designed by CDC-trained epidemiologists and grounded in over 25 years of infection surveillance software experience, **BD Protect Infection Prevention** has the flexibility to support your unique infection prevention goals.

Contact us at BDProtect@bd.com
to connect with a BD HAI specialist
near you, or visit us at
www.bd.com/ds/BDProtect.

BD Diagnostics
800.426.8015
www.bd.com/ds/BDProtect

INFECTION CONTROL & HOSPITAL EPIDEMIOLOGY

VOLUME 31, NUMBER 7

JULY 2010

CONTENTS CONTINUED FROM COVER

740 Development of a Novel Electronic Surveillance System for Monitoring of Bloodstream Infections •
Jenine Leal, BSc; Daniel B. Gregson, MD; Terry Ross; Ward W. Flemons, MD; Deirdre L. Church, MD, PhD;
Kevin B. Laupland, MD, MSc, FRCPC

748 Population Risk of Syringe Reuse: Estimating the Probability of Transmitting Bloodborne Disease •
Christopher Sikora, MD, FRCP(C); A. Uma Chandran, MD, FRCP(C); A. Mark Joffe, MD, FRCP(C);
David Johnson, MD, FRCP(C); Marcia Johnson, MD, FRCP(C)

CONCISE COMMUNICATIONS

755 Outbreak of Adenovirus Type 4 Infection in a Long-Term Care Facility for the Elderly • Ruth Kandel, MD;
Arjun Srinivasan, MD; Erika M. C. D'Agata, MD; Xiaoyan Lu, MS; Dean Erdman, DrPH; Michael Jung, MD, MPH

758 Hand Hygiene in Long-Term Care Facilities: A Multicenter Study of Knowledge, Attitudes, Practices, and Barriers • Muhammad Salman Ashraf, MD; Syed Wasif Hussain, MD; Nimit Agarwal, MD; Sadaf Ashraf, MD;
Gabriel EL-Kass, MD; Roshan Hussain, MPH, MBA; Hashim Nemat, MD; Nairmeen Haller, MS, PhD;
Renee Pekmezaris, PhD; Cristina Sison, PhD; Rajni Walia, MA; Ann Eichorn, MS; Charles Cal, RN, MS, MBA;
Yosef Dlugacz, PhD; Barbara T. Edwards, MD; Betina Louis, MD; Gloria Alano, MD; Gisele Wolf-Klein, MD

763 Beyond β : Lessons Learned from Implementation of the Department of Veterans Affairs Methicillin-Resistant *Staphylococcus aureus* Prevention Initiative • Amanda G. Garcia-Williams, MPH;
LaToya J. Miller, MPH; Kelly H. Burkitt, PhD; Timothy Cuerton, PhD; Rajiv Jain, MD; Michael J. Fine, MD, MSc;
John A. Jernigan, MD, MS; Ronda L. Sinkowitz-Cochran, MPH

766 Identification and Eradication of Methicillin-Resistant *Staphylococcus aureus* Colonization in the Neonatal Intensive Care Unit: Results of a National Survey • Aaron M. Milstone, MD, MHS;
Xiaoyan Song, PhD; Susan Coffin, MD, MPH; Alexis Elward, MD, MPH; for the
Society for Healthcare Epidemiology of America's Pediatric Special Interest Group

769 Cluster of Pseudo-infections with *Burkholderia cepacia* Associated with a Contaminated Washer-Disinfector in a Bronchoscopy Unit • Dror Rosengarten, MD; Colin Block, MBBCh, PhD;
Carlos Hidalgo-Grass, MD, PhD; Violeta Temper, MD; Ilana Gross, RN, MPH; Anna Budin-Mizrahi, RN;
Neville Berkman, MBBCh, FRCP; Shmuel Benenson, MD

772 Suction Regulators: A Potential Vector for Hospital-Acquired Pathogens • Keith S. Kaye, MD, MPH;
Dror Marchaim, MD; Chester Smialowicz, MD; Lauren Bentley, MSBME

LETTERS TO THE EDITOR

775 Unusual Nosocomial Exposure to H1N1 Influenza Virus via Open-Chest Cardiac Massage •
Burke A. Cunha, MD; Uzma Syed, DO; Valsamma Thekkel, RN, MSN, CIC; Marlene Davis, PA-C

776 The Need for Additional Investigation of Room Decontamination Processes • John Leander Po, MD, PhD;
Philip C. Carling, MD

ERRATUM

778 Vikram et al (2010;31(5):541-543) •

An Official Publication of the Society for Healthcare Epidemiology of America

EDITOR

Suzanne F. Bradley, MD • Ann Arbor, MI

DEPUTY EDITOR

Carol A. Kauffman, MD • Ann Arbor, MI

SENIOR ASSOCIATE EDITORS

C. Glen Mayhall, MD • Galveston, TX
Gina Pugliese, RN, MS • Chicago, IL
William Schaffner, MD • Nashville, TN

ASSOCIATE EDITORS

Ebbing Lautenbach, MD, MPH • Philadelphia, PA
Preeti N. Malani, MD, MSJ • Ann Arbor, MI
David Weber, MD, MPH • Chapel Hill, NC

STATISTICS CONSULTANT

Rodney L. Dunn, MS • Ann Arbor, MI

**SECTION EDITOR FOR GUIDELINES,
POSITION PAPERS, AND INVITED REVIEWS**

Carol Chenoweth, MD • Ann Arbor, MI

MANAGING EDITOR

Rob Blixt • Chicago, IL

PAST EDITORS

Infection Control

Richard P. Wenzel, MD, 1980–1990 (vols. 1–11)

Infection Control and Hospital Epidemiology

Richard P. Wenzel, MD, 1991–1992 (vols. 12 and 13)

Michael D. Decker, MD, 1993–2001 (vols. 14–22)

Barry M. Farr, MD, 2002–2004 (vols. 23–25)

William R. Jarvis, MD, 2005–2006 (vols. 26 and 27)

EDITORIAL ADVISORY BOARD

Miriam Alter, PhD, MD • Atlanta, GA
Anucha Apisarnthanarak, MD • Pratumthani, Thailand
Lennox Archibald, MD, FRCP • Alachua, FL
Hilary Babcock, MD • St. Louis, MO
Elise M. Beltrami, MD, MPH • Decatur, GA
David Birnbaum, PhD, MPH • Sidney, BC
Christian Brun-Buisson, MD • Creteil, France
John P. Burke, MD • Salt Lake City, UT
David P. Calfee, MD, MS • New York, NY
Yehuda Carmeli, MD, MPH • Tel Aviv, Israel
Sara E. Cosgrove, MD, MS • Baltimore, MD
Donald E. Craven, MD • Burlington, MA
Burke A. Cunha, MD • Mineola, NY
Erika D'Agata, MD, MPH • Boston, MA
Patch Dellinger, MD • Seattle, WA
Daniel Diekema, MD • Iowa City, IA
Charles E. Edmiston, Jr., PhD • Milwaukee, WI
Theodore C. Eickhoff, MD • Denver, CO
Martin S. Favero, PhD • Irvine, CA
Jon P. Furuno, PhD • Baltimore, MD
Petra Gastmeier, MD • Hanover, Germany
Dale N. Gerding, MD • Hines, IL
Donald A. Goldmann, MD • Boston, MA
Donna Haiduvan, RN, PhD, CIC • Tampa, FL
Anthony D. Harris, MD, MPH • Baltimore, MD
David K. Henderson, MD • Bethesda, MD
Loreen A. Herwaldt, MD • Iowa City, IA
Peter N. R. Heseltine, MD • San Juan, CA
Karen Hoffmann, RN, CIC, MS • Chapel Hill, NC
Janine Jagger, MPH, PhD • Charlottesville, VA
John A. Jernigan, MD, MS • Atlanta, GA
James T. Lee, MD, PhD • St. Paul, MN
L. Clifford McDonald, MD • Atlanta, GA

Allison McGeer, MD • Toronto, ON
Leonard A. Mermel, DO, ScM • Providence, RI
Robert R. Muder, MD • Pittsburgh, PA
Carlene A. Muto, MD, MS • Pittsburgh, PA
Joseph M. Mylotte, MD, CIC • Buffalo, NY
David L. Paterson, MBBS, FRACP • Pittsburgh, PA
Jan Evans Patterson, MD • San Antonio, TX
Sindy M. Paul, MD • Yardley, PA
David A. Pegues, MD • Los Angeles, CA
Eli Perencevich, MD, MS • Baltimore, MD
Michael A. Pfaller, MD • Iowa City, IA
Didier Pittet, MD, MS • Geneva, Switzerland
Gina Pugliese, RN, MS • Chicago, IL
Isaam Raad, MD • Houston, TX
Jordi Rello, MD, PhD • Tarragona, Spain
Manfred L. Rotter, MD, DipBact • Vienna, Austria
Henning Rüden, MD • Berlin, Germany
William A. Rutala, PhD, MPH • Chapel Hill, NC
Lisa Saiman, MD, MPH • New York, NY
Sanjay Saint, MD, MPH • Ann Arbor, MI
William E. Scheckler, MD • Madison, WI
Lynne M. Sehulster, PhD • Atlanta, GA
John A. Sellick, DO • Amherst, NY
Kent Sepkowitz, MD • New York, NY
Samir Shah, MD, MSCE • Philadelphia, PA
Andrew E. Simor, MD • Toronto, ON
Philip W. Smith, MD • Omaha, NE
Denis W. Spelman, MD • Prahan, Victoria, Australia
Jeffrey R. Starke, MD • Houston, TX
Janet E. Stout, PhD • Pittsburgh, PA
Clyde Thornsberry, PhD • Franklin, TN
William Trick, MD • Chicago, IL
Antoni Trilla, MD, PhD • Barcelona, Spain
Robert A. Weinstein, MD • Chicago, IL
Andreas Widmer, MD, MS • Basel, Switzerland
Marcus Zervos, MD • Royal Oak, MI

Infection Control and Hospital Epidemiology (ISSN 0899-823X) is published monthly by the University of Chicago Press, 1427 E. 60th St., Chicago, IL 60637-2954 (<http://www.journals.uchicago.edu/ICHE/>). The editorial office is in Chicago, Illinois.

Editorial Office

Communications should be addressed to the Editor, *Infection Control and Hospital Epidemiology*, 1427 E. 60th St., Chicago, IL 60637-2954; (e-mail: iche@press.uchicago.edu; telephone: 773-773-2298, fax: 773-753-4247). Contributors should consult the Information for Authors, which is available at the journal's Web site.

Advertising

Please direct advertising inquiries to Journals Advertising, University of Chicago Press, 1427 E. 60th St., Chicago, IL 60637 (e-mail: cbarhany@press.uchicago.edu; telephone: 773-702-8187; fax: 773-702-0172). Publication of an advertisement in *Infection Control and Hospital Epidemiology* does not imply endorsement of its claims by the Society for Healthcare Epidemiology of America, by the Editor, or by the University of Chicago. Correspondence regarding advertising should be addressed to the advertising office in Chicago.

Permissions

Articles may be copied or otherwise reused without permission only to the extent permitted by Sections 107 and 108 of the US Copyright Law. Permission to copy articles for personal, internal, classroom, or library use may be obtained from the Copyright Clearance Center (<http://www.copyright.com>). For all other uses, such as copying for general distribution,

for advertising or promotional purposes, for creating new collective works, or for resale, please contact the Permissions Coordinator, Journals Division, University of Chicago Press, 1427 E. 60th St., Chicago, IL 60637 (e-mail: journalpermissions@press.uchicago.edu; fax: 773-834-3489). Articles in the public domain may be used without permission, but it is customary to contact the author.

Subscriptions

Subscription rates for 2010 are \$180 for individuals and \$413 for institutions. Single-copy rates are \$18 for individuals and \$41 for institutions. Additional rates for non-US subscribers and reduced rates for fellows, residents, and students are available at <http://www.journals.uchicago.edu/ICHE>. Individuals have the option to order directly from the University of Chicago Press. Subscription agent for Japan: Kinokuniya Company, Ltd.

Please direct subscription inquiries, requests for back issues, and address changes to Journals Division, University of Chicago Press, P.O. Box 37005, Chicago, IL 60637 (e-mail: subscriptions@press.uchicago.edu; telephone: 773-753-3347 or toll-free in the United States and Canada 877-705-1878; fax: 773-753-0811 or toll-free 877-705-1879).

Postmaster: Send address changes to *Infection Control and Hospital Epidemiology*, University of Chicago Press, P.O. Box 37005, Chicago, IL 60637-2954.

Periodicals postage paid at Chicago, Illinois, and at an additional mailing office.

Published by the University of Chicago Press, Chicago, Illinois. © 2010 by the Society for Healthcare Epidemiology of America. All rights reserved. This publication is printed on acid-free paper.

INFECTIOUS DISEASE

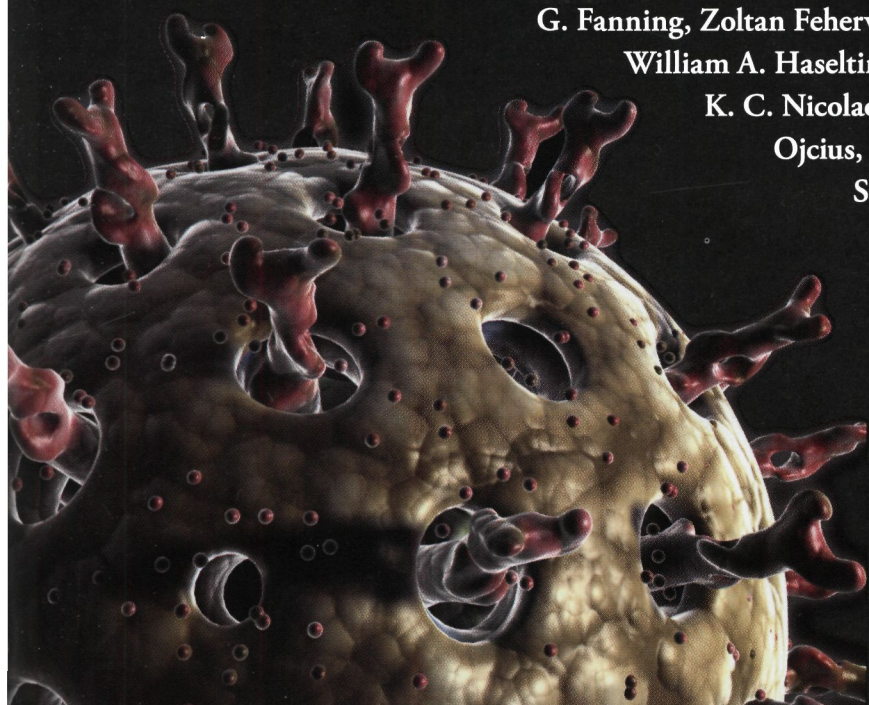
Edited by **SCIENTIFIC AMERICAN**

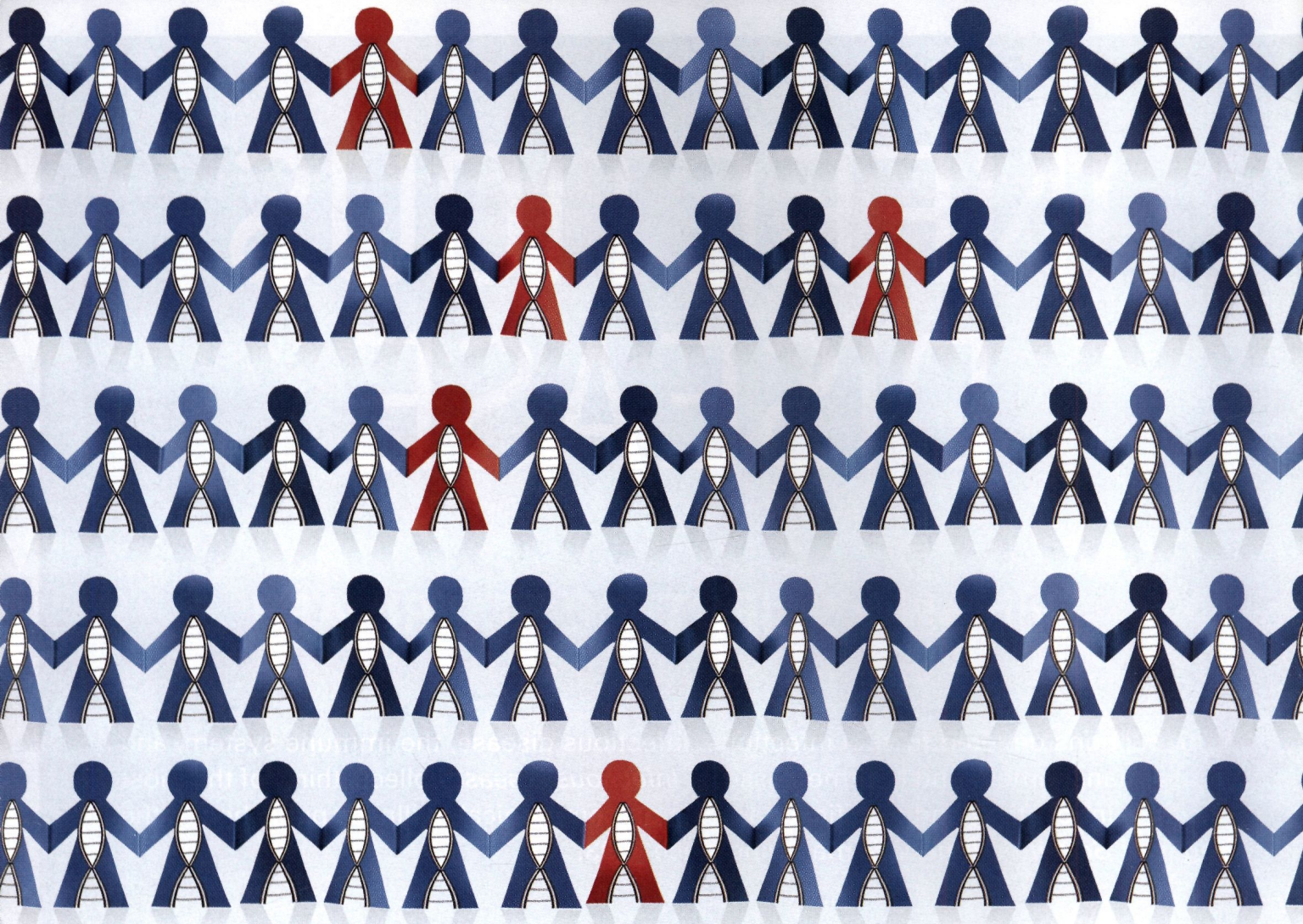
With sections devoted to viral infections, infectious disease, the immune system, and global management and treatment issues, *Infectious Disease* collects thirty of the most exciting, innovative, and significant articles on communicable illness published in the pages of *Scientific American* magazine since 1993.

C ontributors: Bruce R. Bacon, Jacques Banchereau, Chris L. Barrett, Patrik M. Bavoil, Martin J. Blaser, Christopher N. C. Boddy, R. John Collier, Toni Darville, Daniel M. Davis, Adrian M. Di Bisceglie, Claire Panosian Dunavan, Paul R. Epstein, Stephen G. Eubank, Carol Ezzell, Thomas G. Fanning, Zoltan Fehervari, W. Wayt Gibbs, Roger I. Glass, William A. Haseltine, Bernard Le Guenno, Stuart B. Levy, K. C. Nicolaou, Abner Louis Notkins, David M. Ojcius, Luke A. J. O'Neill, William E. Paul, Stanley B. Prusiner, Ann H. Reid, Philip E. Ross, Shimon Sakaguchi, James P. Smith, Christine Soares, Gary Stix, Jeffery K. Taubenberger, Luis P. Villarreal, Rodney E. Willoughby, Jr., John A. T. Young, Moncef Zouali

Paper \$22.50

The University of Chicago Press www.press.uchicago.edu





Roche. Reliable detection with the LightCycler[®] MRSA Advanced Test

Runs on the LightCycler[®] 2.0 Instrument, a technology you know and trust.

You can expect rapid turn-around time from sample preparation to automated amplification and detection, which can lead to earlier treatment intervention.

Offers flexible batch size and high throughput with a single instrument for greater cost effectiveness.

With a small footprint and fast results, the LightCycler[®] 2.0 Instrument gives you the ability to achieve high volume testing, yet the flexibility to cost effectively test a single sample when needed.

Ensures fast and simple operation.

Its ready-to-use reagent format and minimal hands-on time make this PCR test highly economical and easy to use for any operator.

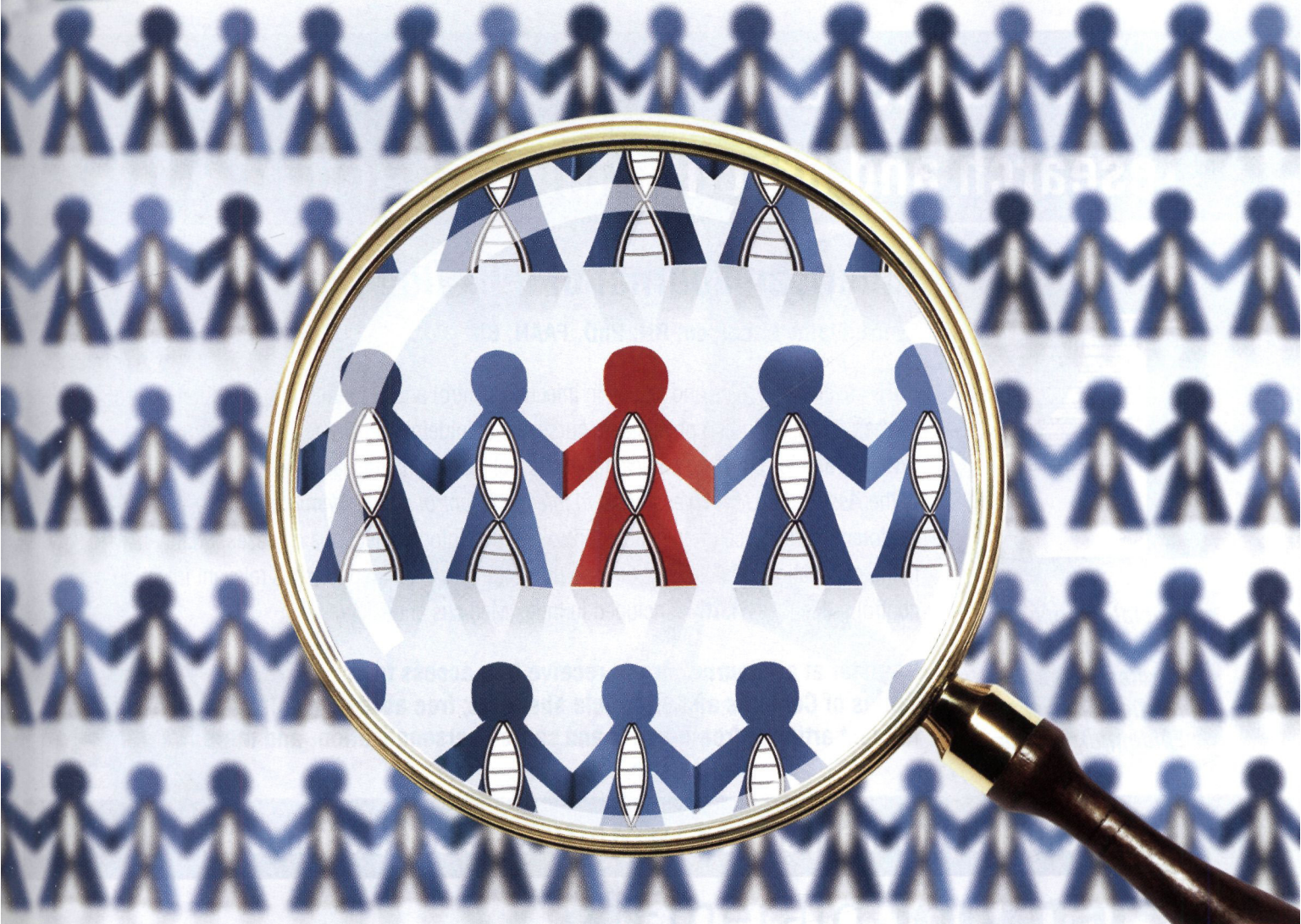
Increases confidence in your results.

The LightCycler[®] MRSA Advanced Test is designed to provide accurate and reliable results for better patient care. Prevent contamination with Roche's AmpErase enzymes and achieve excellent sensitivity with the LightCycler[®] MRSA Advanced Test. Rely on Roche for better healthcare and patient management.

Pending FDA clearance in the U.S.
ROCHE, LIGHTCYCLER, and MRSA ADVANCED are trademarks of Roche.
The technology used for the LightCycler[®] System is licensed from Idaho Technology, Inc.
© 2010 Roche Molecular Systems, Inc. All rights reserved.
Roche Molecular Diagnostics
4300 Hacienda Drive
Pleasanton, CA 94588 USA
<http://molecular.roche.com>



We Innovate Healthcare



There's More to Just Screening for **MRSA**

Test Efficiently. Reduce Risk. Improve Patient Care.

The LightCycler® MRSA Advanced Test provides efficient and rapid time to result compared to conventional screening methods. Standardize the management of your MRSA screening program with molecular technology while providing efficient laboratory workflow and competitive value with Roche's PCR test.

Reduce the risk of MRSA infection with higher sensitivity versus culture when using the LightCycler® MRSA Advanced Test. With a faster time to result and specificity similar to culture,

colonized patients can be removed more quickly from the general patient population reducing the risk of infection spread and the costs associated with treatment.

Improve patient care with faster decisions concerning MRSA-related isolation and management. Combined with a comprehensive infection control program, the LightCycler® MRSA Advanced Test may help reduce MRSA infection while improving patient care within your healthcare institution.

Pending FDA clearance in the U.S.
ROCHE, LIGHTCYCLER, and MRSA ADVANCED are trademarks of Roche.
The technology used for the LightCycler® System is licensed from Idaho Technology, Inc.
© 2010 Roche Molecular Systems, Inc. All rights reserved.
Roche Molecular Diagnostics
4300 Hacienda Drive
Pleasanton, CA 94588 USA
<http://molecular.roche.com>



We Innovate Healthcare

Find the latest in infection control research and practice information in AJIC



American Journal of Infection Control

EDITOR: **Elaine L. Larson, RN, PhD, FAAN, CIC**

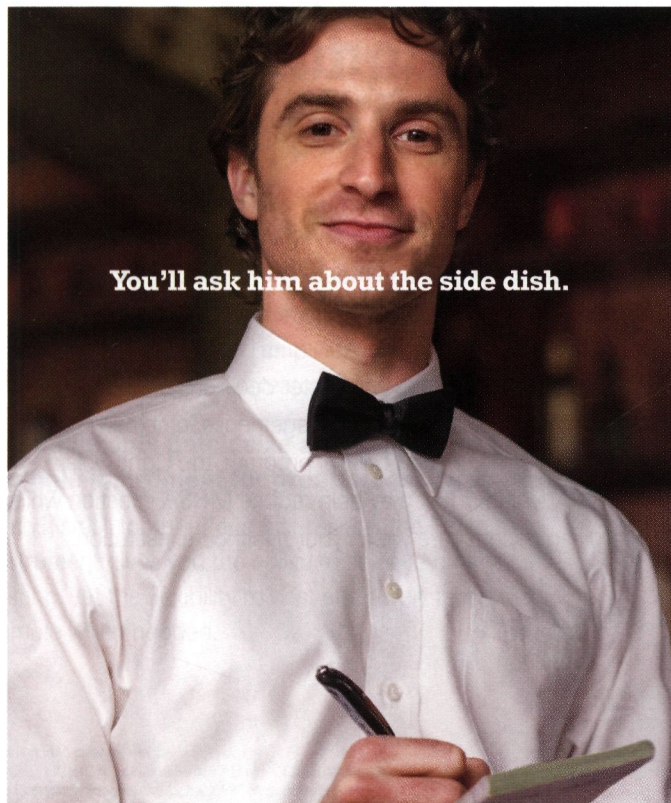
AJIC covers key topics and issues in infection control and epidemiology. Infection control professionals, including physicians, nurses, and epidemiologists, rely on **AJIC** for peer-reviewed articles covering clinical topics as well as original research. As the official publication of the *Association for Professionals in Infection Control and Epidemiology, Inc. (APIC)*, **AJIC** is the foremost resource on infection control, epidemiology, infectious diseases, quality management, occupational health, and disease prevention. **AJIC** also publishes relevant infection control guidelines. **AJIC** is included in Index Medicus and CINAHL.

**Official Publication
of the Association for
Professionals in
Infection Control and
Epidemiology, Inc.**

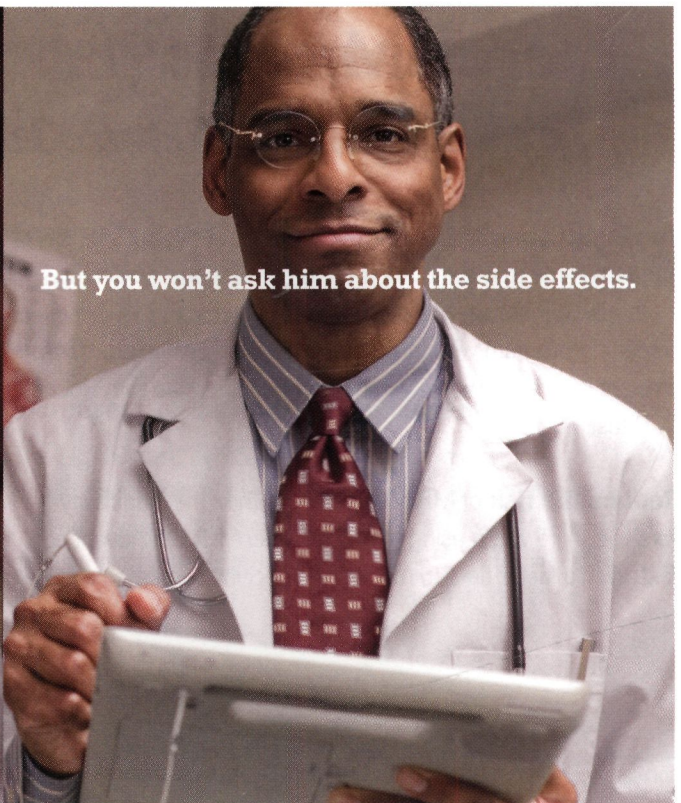
Register at ajicjournal.org to receive free access to
Tables of Contents and all article abstracts; free access to select
full text articles; free e-alerts and search personalization, and more!



Submit your manuscript at: <http://ees.elsevier.com/ajic/>



You'll ask him about the side dish.



But you won't ask him about the side effects.



We ask questions everywhere we go, yet at the doctor's office, we clam up.
Ask questions. For a list of 10 everyone should know, go to AHRQ.gov.



Questions are the answer.



Emerald Journals

Clinical Governance

An International Journal

Clinical Governance: An International Journal aims to address the doubts, queries, triumphs and practical applications of introducing quality assurance mechanisms into the delivery of care.

The journal takes an international stance and covers key developments worldwide which can inform best practice in health care. Efficiency, effectiveness and economics are the main factors in the assessment of best practice and all are addressed in the research- audit- and evidence-based papers published. All papers are peer reviewed to ensure their validity and value to current debates.

The journal publishes:

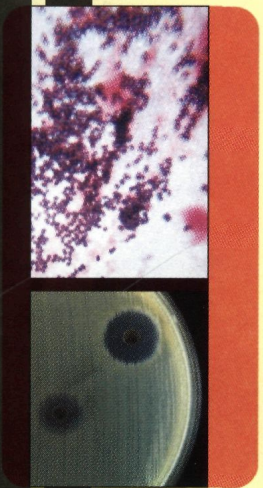
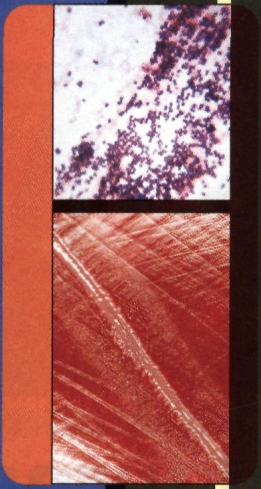
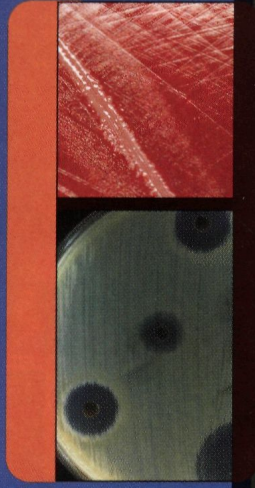
- Research articles which illustrate clear implications for practice
- Results-focused case studies which discuss problems and successes in clinical governance techniques
- Special issues on topical themes

For more information please visit the homepage:
www.emeraldinsight.com/cgij.htm

To submit a paper visit:
<http://mc.manuscriptcentral.com/cgij>



Research you can use



Infection prevention and control in healthcare settings is a critical public health problem rapidly gaining interest.

Are you current with the latest trends and evidence?

Join SHEA Today!

Stay on top of emerging science and evidence-based strategies to prevent and control infections and to improve quality-of-care in your healthcare facility.

SHEA supports members' efforts to improve patient care and healthcare worker safety through:

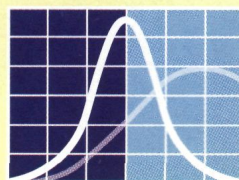
- Research
- Education & Training
- Policy Development
- Evidence-based Practical Guidelines
- Mentorship and Professional Development

Application Details

www.shea-online.org
info@shea-online.org
(703) 684-1006

Annual membership offers:

- Subscription and online access to *Infection Control and Hospital Epidemiology (ICHE)*, the official journal of SHEA
- Epidemiology News and e-newsletter
- Discounted registration on SHEA educational programming
- Online member network and job board



SHEA
The Society for Healthcare
Epidemiology of America