

Short Communication

Camera trapping of large mammals in Yenice Forest, Turkey: local information versus camera traps

ÖZGÜN EMRE CAN and İNCİ TOĞAN

Abstract Information on large mammals in Turkey is limited, and widely applicable, reliable field methods need to be used to gather appropriate data for conservation and management. To evaluate local information on mammal species we conducted interview and ground surveys, followed by a camera trap survey, during January–May 2006 in Yenice Forest, a globally important and intact region for mammals in Turkey. Interviews with local people provided information on the occurrence of wolf *Canis lupus*, brown bear *Ursus arctos*, wild cat *Felis silvestris*, red fox *Vulpes vulpes*, Eurasian badger *Meles meles*, pine marten *Martes martes*, roe deer *Capreolus capreolus*, wild boar *Sus scrofa* and Eurasian lynx *Lynx lynx*. The ground and camera trap surveys confirmed the presence of all these species except lynx. In addition, the camera trap survey documented the presence of jackal *Canis aureus* and brown hare *Lepus europaeus*, signs of which were not found in the ground survey and whose presence was not known by local people. Local information on wildlife is important but management and conservation initiatives should not solely depend on such information and, as our study indicates, interview surveys cannot replace field research. The Turkish Ministry of Environment and Forestry needs to consider the establishment of a protected area large enough to secure the future of the large mammals of Yenice Forest.

Keywords Camera trap, *Canis lupus*, *Felis silvestris*, mammals, Turkey, *Ursus arctos*, Yenice Forest.

Large mammals are often nocturnal and elusive, typically range widely, and occur infrequently over large parts of their distribution ranges (Sunquist & Sunquist, 2002; Sanderson, 2004). Accurate methods exist to monitor such species but they require extensive fieldwork, have high costs (Linnell et al., 1998) and need trained personnel. The availability of camera traps, however, now facilitates such monitoring under most environmental conditions (Holden et al., 2003; Silveira et al., 2003).

ÖZGÜN EMRE CAN* (Corresponding author) and İNCİ TOĞAN Department of Biology, Middle East Technical University, Ankara, Turkey. E-mail emre.can@daad-alumni.de

*Current address: Turkish Nature Association & Carnivore Initiative for Turkey, Hürriyet Caddesi 43/12, Dikmen, 06460 Ankara, Turkey.

Received 15 April 2008. Revision requested 16 May 2008.
Accepted 4 July 2008.

Several large mammal species that are ecologically, economically and scientifically important occur in Turkey but their distributions are only vaguely described (Turan, 1984; Demirsoy, 1996) and systematic field surveys and monitoring are practically non-existent for most of these species (Can & Togan, 2004). The objectives of the study described here were to compare local information on large mammals to information gathered from ground and camera trap surveys and to provide baseline data for future conservation research.

The study was conducted in the 50 km² Yaylacık Research Forest, a relatively well protected area within the c. 750 km² Yenice Forest in north-west Turkey (Fig. 1), a global forest hotspot (Lise, 2005) and one of the largest intact regions for mammal fauna globally (Morrison et al., 2007). The altitude of Yenice Forest is 100–2,000 m, it receives an average annual rainfall of 1,200 mm, mean annual temperature is 8.8°C and mean summer and winter temperatures are 30 and 1°C, respectively. Most of the rainfall occurs during spring and the average number of days with snow is 25. Tree species in Yenice Forest are beech *Fagus orientalis*, European hornbeam *Carpinus betulus*, Turkey oak *Quercus cerris*, Istranca oak *Q. hartwissiana*, oak wood *Q. petraea*, Balkan maple *Acer hyrcanum*, Norway maple *A. platanoides*, common ash *Fraxinus excelsior*, yew *Taxus baccata*, Caucasian fir *Abies nordmanniana* and Scots pine *Pinus sylvestris*.

In December 2005, to gather information on the presence of mammals in Yenice Research Forest, we interviewed forestry service personnel (n = 5) who had been working in the study area for 5–15 years and local people (n = 15) who had been working in logging activities for > 5 years, and we conducted ground surveys, on foot, to document tracks and signs of large mammal species. The interviews indicated that wolf *Canis lupus*, brown bear *Ursus arctos*, wild cat *Felis silvestris*, Eurasian lynx *Lynx lynx*, red fox *Vulpes vulpes*, Eurasian badger *Meles meles*, pine marten *Martes martes*, wild boar *Sus scrofa* and roe deer *Capreolus capreolus* are present in the study area. Ground surveys confirmed the presence of all of these species except lynx (which is reported from Yenice Forest; Turan, 1984; Lise, 2005).

We conducted the camera trap survey during January–May 2006 using a combination of 12 CamTrakker (CamTrakker, Georgia, USA) and four DeerCam (DeerCam, Pak Falls, USA) passive infrared camera traps. The survey

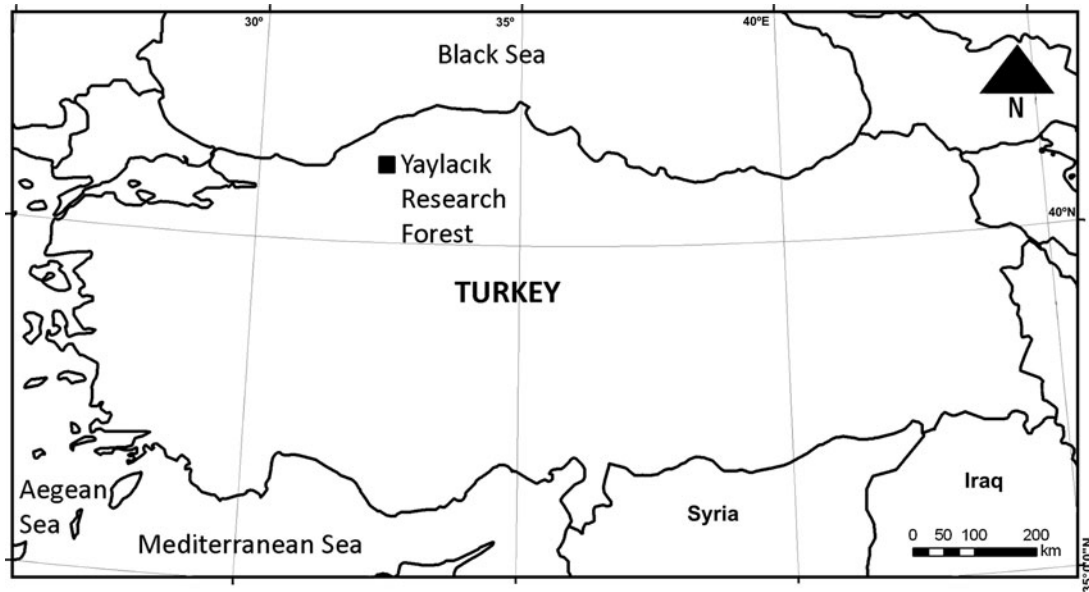


FIG. 1 Location of Yaylacık Research Forest in north-west Turkey.

comprised five consecutive phases, each with 16 camera traps for 15 days in 8 km² (Karanth & Nichols, 2002; Karanth et al., 2004), thus covering 80% of the study area (40 km²). A total of 1,200 camera trap days of observation were made in total. The cameras were placed in each part of the study area to maximize the number of photographs taken, similar to other studies (Karanth & Nichols, 2002; Holden et al., 2003; Wallace et al., 2003; Karanth et al., 2004; Maffei et al., 2004; Silver, 2004; Wegge et al., 2004).

The camera trap survey produced a total of 402 photographs. No animals were registered in 63 (15.7%) photographs and 26 (6.5%) were of small mammals and birds. The remaining 313 photographs were of wolf, brown bear (Plate 1), wild cat, red fox, Eurasian badger, pine marten, wild boar and roe deer but not lynx. Although we did not locate signs of jackal *Canis aureus* or brown hare *Lepus europaeus* in our earlier ground survey they were documented by the camera trap survey, as the least trapped species (Fig. 2). The documentation of jackal and brown hare by the camera trap

survey and the failure to document Eurasian lynx indicate that local information about the wildlife species in an area may not always be reliable and should be checked carefully with field research. This has important implications for Turkey, where most of the wildlife information used in management decisions comes from local people and authorities. In the absence of field studies, authorities depend on local information about the presence of mammals. This study demonstrates that, although such information is important, it cannot replace field surveys.

Our study also demonstrated that camera trapping has potential to gather reliable wildlife data with few personnel in protected areas in Turkey where there is minimum risk of theft and vandalism. The initial costs for conducting camera trap surveys is high because of the cost of the camera traps but once they are purchased they can be used for various research purposes. Information gathered from large-scale camera trap studies could provide the data required for management and conservation of mammals in Turkey.

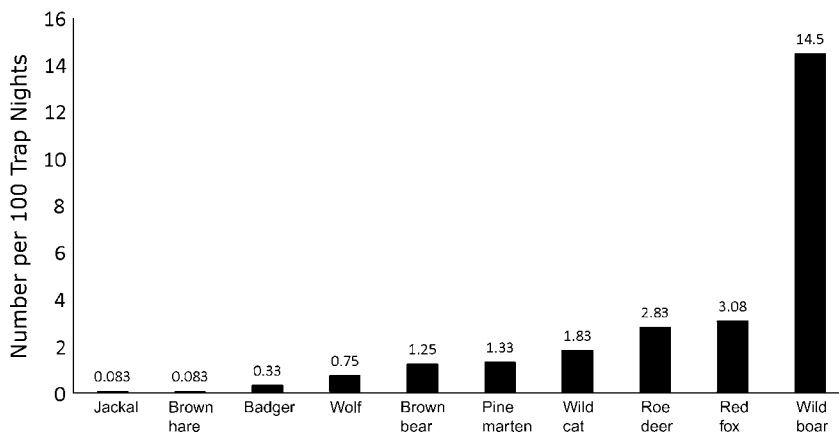


FIG. 2 Number of camera trap records (of a total of 313) per 100 trap nights, by species, in Yaylacık Research Forest.



PLATE 1 Camera trap photographs of (a) wolf and (b) an adult male brown bear in Yaylacık Research Forest.

Yenice Forest is a major logging area, generating revenue for the State and the local communities; 73,000 m³ of forest has been logged and an additional 24,000 m³ of forest was cut for fire wood during 1999–2005 (Lise, 2005). The forestry service is currently considering selective logging in Yaylacık Research Forest and the political pressure from local communities to utilize this forest as a logging area is increasing. Yenice Forest is one the largest intact forest habitats in Turkey and an important area for the long-term conservation of wolf, brown bear, wild cat and roe deer. However, currently only 1.6% (c. 12 km² of 750 km²) of Yenice Forest is protected. We urge the Turkish Ministry of Environment and Forestry authorities and Turkish nature conservation organizations to direct their attention to Yenice Forest, which is important globally because of its intact mammal fauna. We have presented our results to the Turkish Ministry of Environment and Forestry authorities and to the Turkish Nature Association (Doğa Derneği) and WWF Turkey, and we have recently begun new research on the ecology of wolf, brown bear and wild cat in Yaylacık Research Forest.

Acknowledgements

We would like to thank Emin Nasuhoğlu, Murat Tuna, Koray Özer, Murat Altuntaş, Anil Soyumert, Yıldray Lise

and Tuğba Can for their assistance, Dave Garshelis for his suggestions on methodology, and John Beecham for reviewing the manuscript. We thank Jon Swenson and an anonymous referee for constructive criticism. We are indebted to Metin Karadağ and his staff of Central Anatolia Forest Research Institute for providing accommodation and transportation in the field. We thank the General Directory of Nature Conservation and National Parks for the research permit for this study.

References

- CAN, Ö.E. & TOGAN, İ. (2004) Status and management of brown bears in Turkey. *Ursus*, 15, 1.
- DEMİRİSOY, A. (1996) *Memeliler*. Çevre Bakanlığı Çevre Genel Müdürlüğü, Meteksan A.Ş., Ankara, Turkey.
- HOLDEN, J., YANUAR, A. & MARTYR, D.J. (2003) The Asian tapir in Kerinci Seblat National Park, Sumatra: evidence collected through photo-trapping. *Oryx*, 37, 34–40.
- KARANTH, K.U., CHUNDAWAT, R.S., NICHOLS, J.D. & KUMAR, N.S. (2004) Estimation of tiger densities in the tropical dry forests of Panna, Central India, using photographic capture–recapture sampling. *Animal Conservation*, 7, 285–290.
- KARANTH, K.U. & NICHOLS, J.D. (eds) (2002) *Monitoring Tigers and Their Prey*. Centre for Wildlife Studies, Bangalore, India.
- LINNELL, J.D.C., SWENSON, J.E., LANDA, A. & KVAM, T. (1998) *Methods for Monitoring European Large Carnivores—A Worldwide Review of Relevant Experience*. NINA Oppdragsmelding, Trondheim, Norway.
- LİSE, Y. (2005) *Yenice Ormanları*. National Geographic Turkey, Istanbul, Turkey.
- MAFFEI, L., CUELLAR, E. & NOSS, A. (2004) One thousand jaguars (*Panthera onca*) in Bolivia's Chaco? Camera trapping in the Kaa-Iya National Park. *Journal of Zoology*, 262, 295–304.
- MORRISON, J.C., SECHREST, W., DINERSTEIN, E., WILCOVE, D.S. & LAMOREUX, J.F. (2007) Persistence of large mammal faunas as indicators of global human impacts. *Journal of Mammalogy*, 88, 1363–1380.
- SANDERSON, J.G. (2004) *Camera Phototrapping Monitoring Protocol*. The Tropical Ecology, Assessment and Monitoring Initiative, Center for Applied Biodiversity Science, Conservation International, Virginia, USA.
- SILVEIRA, L., JÁCOMO, A.T.A. & DINIZ-FILHO, J.A.F. (2003) Camera trap, line transect census and track surveys: a comparative evaluation. *Biological Conservation*, 114, 351–355.
- SILVER, S. (2004) *Assessing Jaguar Abundance using Remotely Triggered Cameras*. Jaguar Conservation Program, Wildlife Conservation Society, New York, USA.
- SUNQUIST, M. & SUNQUIST, F. (2002) *Wild Cats of the World*. The University of Chicago Press, Chicago, USA.
- TURAN, N. (1984) *Türkiye'nin av ve yaban hayvanları: Memeliler*. Ongun Kardeşler Matbaacılık Sanayii, Ankara, Turkey.
- WALLACE, R.B., GOMEZ, H., AYALA, G. & ESPINOZA, F. (2003) Camera trapping for jaguar (*Panthera onca*) in the Tuichi Valley, Bolivia. *Journal of Neotropical Mammalogy*, 10, 133–139.
- WEGGE, P., POKHERAL, C.P. & JNAWALI, S.R. (2004) Effects of trapping effort and trap shyness on estimates of tiger abundance from camera trap studies. *Animal Conservation*, 7, 251–256.

Biographical sketches

ÖZGÜN EMRE CAN'S research interests are in large carnivore monitoring and conservation. He has worked with grey wolves in Minnesota, USA, with wolves, brown bears, striped hyenas and wild felids in Turkey, and is currently working as large mammal research and conservation coordinator at the Turkish Nature Association in Turkey. He is founder of Carnivore Initiative for Turkey, a member of the Society for Conservation Biology Europe Section Board of

Directors, co-chair of the IUCN Bear Specialist Group South Asia Brown Bear Expert Team, and a member of the IUCN Wolf, Hyaena, Canid and Cat Specialist Groups. İNCİ TOĞAN carries out research on population biology and genetics. She has previously studied the brown trout of Turkey, and is currently studying the evolutionary history of human populations, domestic sheep and dogs in Anatolia. Through these studies she is hoping to find a strategy to prioritize the Anatolian sheep breeds for conservation.