

ARTICLES

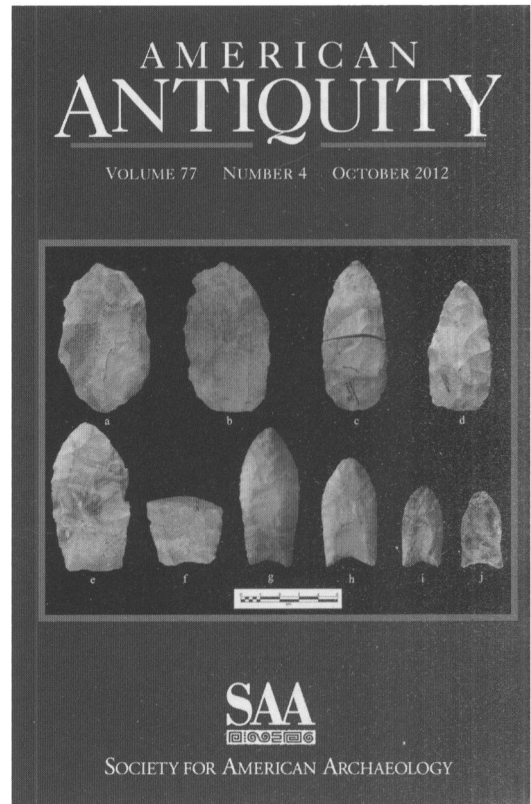
- 621 **Perspectivism, Mortuary Symbolism, and Human-Shark Relationships on the Maritime Peninsula**
Matthew W. Betts, Susan E. Blair, and David W. Black
- 646 **Coalescent Communities: Settlement Aggregation and Social Integration in Iroquoian Ontario**
Jennifer Birch
- 672 **The Associational Critique of Quaternary Overkill and Why It Is Largely Irrelevant to the Extinction Debate**
Todd A. Surovell and Brigid S. Grund
- 689 **Clovis Technology and Settlement in the American Southeast: Using Biface Analysis to Evaluate Dispersal Models**
Ashley M. Smallwood
- 714 **Modeling Modes of Hunter-Gatherer Food Storage**
Christopher Morgan
- 737 **An Archaeology of Eurocentrism**
Charles E. Orser, Jr.

REPORTS

- 756 **Archaic Period Shell Middens, Sea-Level Fluctuation, and Seasonality: Archaeology along the Northern Gulf of California Littoral, Sonora, Mexico**
Michael S. Foster, Douglas R. Mitchell, Gary Huckleberry, David Dettman, and Karen R. Adams
- 774 **Beveled Projectile Points and Ballistics Technology**
Carl P. Lipo, Robert C. Dunnell, Michael J. O'Brien, Veronica Harper, and John Dudgeon
- 789 **Distinguishing between Darts and Arrows in the Archaeological Record: Implications for Technological Change in the American West**
William R. Hildebrandt and Jerome H. King
- 800 **Mud Wasp Nests as Markers of Middle Holocene House Structures in the Central Mississippi Valley**
James J. Krakker

COMMENTS

- 808 **Spatial Distribution of Rock Art Sites in Didima Gorge, South Africa**
Sam Challis, J. David Lewis-Williams, Johannes H. N. Loubser, and David G. Pearce
- 813 **Altitude Adjustments: More on Didima Gorge and New Directions in Rock Art Research**
Grant S. McCall



NOTICE TO AUTHORS

Latin American Antiquity publishes original papers on the archaeology, prehistory, and ethnohistory of Latin America, i.e., Mesoamerica, Central America, and South America, together with culturally affiliated adjacent regions. Papers may also treat more general theoretical and methodological issues with relevance to Latin America. Authors submit manuscripts to the editor for consideration as ARTICLES or REPORTS in English, Spanish, or Portuguese. The normal, expected length of an ARTICLE will be 10–15,000 words, including bibliographies and tables. REPORTS should be under 10,000 words. Tables and illustrations should be limited to those that are appropriate and necessary. Authors are required to submit manuscripts electronically through Editorial Manager[®] (<http://www.editorialmanager.com/laq>). Detailed information on policy, style, and technical matters of manuscript preparation is given in English and in Spanish in the “Editorial Policy, Information for Authors, and Style Guide for *American Antiquity* and *Latin American Antiquity*,” available through the World Wide Web at <http://www.saa.org/Publications/StyleGuide/styframe.html>. For additional information, updates, or clarification, consult the managing editor at the SAA office in Washington, D.C.

BOARD OF DIRECTORS OF THE SOCIETY FOR AMERICAN ARCHAEOLOGY

Officers

President: W. FREDERICK LIMP, RPA, University of Arkansas, 304 JBHT (Hunt Center), Fayetteville, AR 72701

President-Elect: JEFFREY H. ALTSCHUL, RPA, Statistical Research, Inc., PO Box 31865, 6099 E. Speedway Blvd., Tucson, AZ 85751-1865

Secretary: JANET E. LEVY, RPA, UNC at Charlotte, 9201 University City Blvd, Department of Anthropology, Charlotte, NC 28223-0001

Secretary-Elect: CHRISTINA B. RIETH, RPA, New York State Museum, Division of Research and Collections, Cultural Education Center 3122, Albany, New York 12230-0001

Treasurer: ALEX W. BARKER, Director, University of Missouri, Museum of Art & Archaeology, 1 Pickard Hall, Columbia, MO 65211-0001

Board Members at-Large

SUZANNE K. FISH, University of Arizona, Arizona State Museum, Tucson, AZ 85721-0001

EDUARDO GOES NEVES, Museu de Arqueologia e Etnologia, Av. Professor Almeida, Prado, 1466, Sao Paulo 05508-900, Brazil

KELLEY A. HAYS-GILPIN, RPA, Northern Arizona University, 1750 W. Chelsea Way, Flagstaff, AZ 86001-9031

SARAH A. HERR, RPA, Desert Archaeology, Inc., 3975 N. Tucson Blvd, Tucson, AZ 85716-1037

ALSTON V. THOMS, Department of Anthropology, Texas A&M University, 309J Anthropology Building, 4352 TAMU, College Station, TX 77843-4352

MELINDA ZEDER, Smithsonian Institution, NMNH MRC 112, PO Box 37102, Department of Anthropology, Washington, DC 20013-7012

Ex-Officio Board Member

TOBI A. BRIMSEK, Executive Director, Society for American Archaeology, 1111 14th Street NW, Suite 800, Washington, DC 20005

ARTICLES

- 355 Regroup on “E-Groups”: Monumentality and Early Centers in the Middle Preclassic Maya Lowlands
James A. Doyle
- 381 Spindle Whorls from El Palmillo: Economic Implications
Lacey B. Carpenter, Gary M. Feinman, and Linda M. Nicholas

THEMED SECTION: REORGANIZATION AND RESILIENCE

- 401 State Collapse and Household Resilience in the Oaxaca Valley of Mexico
Ronald K. Faulseit
- 426 Human Sacrifice during the Epiclassic Period in the Northern Basin of Mexico
Christopher T. Morehart, Abigail Meza Peñaloza, Carlos Serrano Sánchez, Emily McClung de Tapia, and Emilic Ibarra Morales
- 449 A Macroregional Perspective on Chiefly Cycling in the Central Region of Panama during the Late Ceramic II Period (A.D. 700–1522)
Adam C. J. Menzies and Mikael J. Haller

THEMED SECTION: DIET, DISEASE, AND SOCIAL CHANGE

- 467 Disease, Demography, and Diet in Early Colonial New Spain: Investigation of a Sixteenth-Century Mixtec Cemetery at Teposcolula Yucundaa
Christina Warinner, Nelly Robles García, Ronald Spores, and Noreen Tuross
- 490 Dietary Correlates to the Development of Nasca Social Complexity (A.D. 1–750)
Corina M. Kellner and Margaret J. Schoeninger
- 509 Regional Variation in the Importance and Uses of Maize in the Early and Middle Formative Olmec Heartland: New Archaeobotanical Data from the San Carlos Homestead, Southern Veracruz
Amber M. VanDerwarker and Robert P. Kruger

REPORTS

- 533 Lagoa Santa Revisited: An Overview of the Chronology, Subsistence, and Material Culture of Paleoindian Sites in Eastern Central Brazil
Astolfo G. M. Araujo, Walter A. Neves, and Renato Kipnis
- 551 La ocupación humana durante la transición Pleistoceno-Holoceno (11,000–9000 A.P.) en las Sierras Centrales de Argentina
Diego E. Rivero
- 565 Geometric Earthworks in the State of Acre, Brazil: Excavations at the Fazenda Atlântica and Quinauá Sites
Sanna Saunaluoma

THEMED REPORTS SECTION: CAVES AND ROCKSHELTERS

- 585 Tzinacamoztoc, Possible Use of a Lava Tube as a Zenithal Observatory near Cantona Archaeological Site, Puebla, Mexico
Ramón Espinasa-Pereña and Ruth Diamant
- 597 The El Gigante Rockshelter: Preliminary Observations on an Early to Late Holocene Occupation in Southern Honduras
Timothy E. Scheffler, Kenneth G. Hirth, and George Hasemann
- 611 Small Caves and Sacred Geography: A Case Study from the Prehispanic Maya Site of Maax Na, Belize
Eleanor M. King, James E. Brady, Leslie C. Shaw, Allan B. Cobb, C. L. Kieffer, Michael L. Brennan, and Chandra L. Harris

629 INDEX TO VOLUME 23

On the cover: Depictions of the 1545–1550 epidemic in native documents: (a) Codex Telleriano-Remensis, folio 46v; and (b) Codex en Cruz (drawings by the author). From “Disease, Demography, and Diet in Early Colonial New Spain: Investigation of a Sixteenth-Century Mixtec Cemetery at Teposcolula Yucundaa,” by Christina Warinner, Nelly Robles García, Ronald Spores, and Noreen Tuross, page 480.

© The paper used in this publication meets the requirements of ANSI/NISO Z39.48-1992 (Permanence of Paper).