

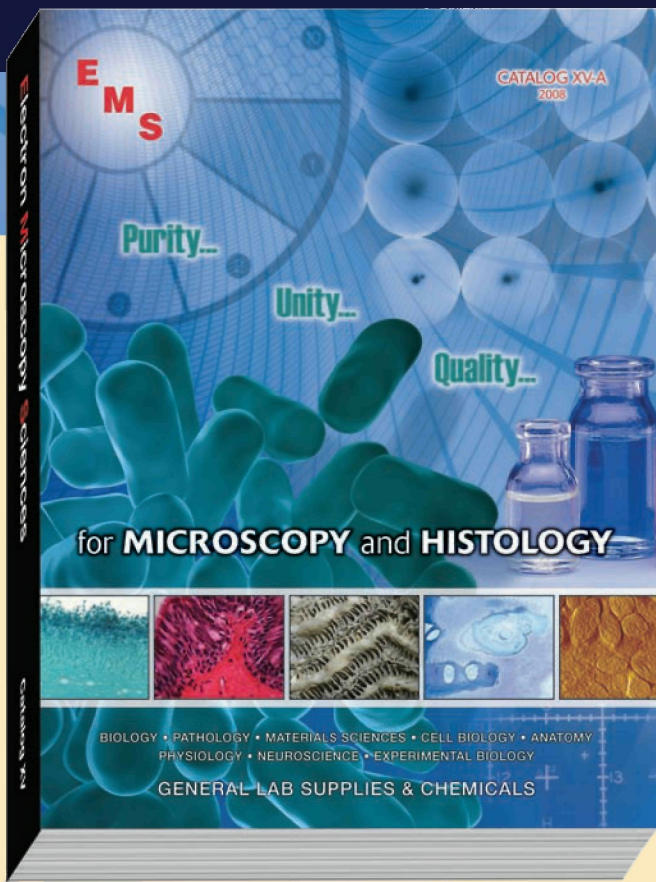
# The new **2008-2010 EMS CATALOG** is now available!

**Exacting Research**  
demands only the  
**Highest Quality Products.**

Introducing the 2008–2010 EMS Catalog, your comprehensive source for chemicals, supplies, accessories, and equipment for Microscopy, Histology and all fields of biological and materials research.

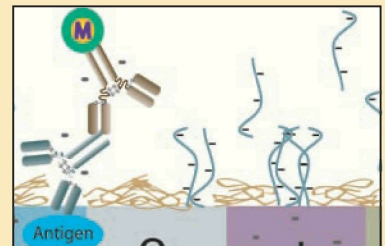
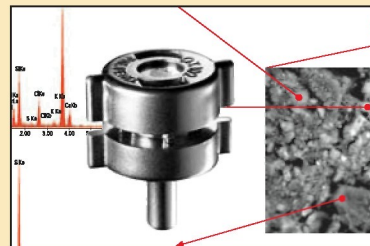
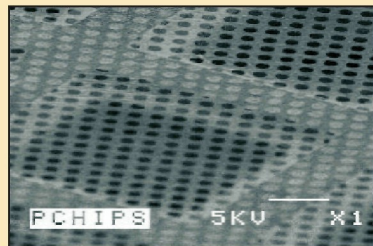
*Featuring new and revolutionary products, including:*

- C-flat™ Holey Carbon Grids for cryo-TEM
- Tools for Microsample Manipulation & Measurements
- WETSEM™ Capsules for Hydrated SEM Samples
- DuraSIN™ Substrates for TEM & X-ray
- Diatome Oscillating Diamond Knife
- Digital High Resolution Microscopes
- Ultra-Thin Carbon Tabs
- Plunge Freezer
- EMS 9000 Precision Pulsed Laboratory Microwave Oven
- State-of-the-Art Oscillating Tissue Slicers
- NioProbe and TipCheck for AFM
- Aurion ImmunoGold Reagents and Accessories
- EMS LYNX Tissue Processor
- MAG\*I\*CAL®
- EMS Carbon Coaters and Sputter Coaters



**Your one-stop shop for the latest products and solutions for Microscopy and Histology!**

**Application Notes • More Technical Support • Enhanced Product Lines • Revolutionary Products**



**QuantomiX WETSEM™ • AURION Newsletters • Diatome Diamond Knives • C-flat™ Holey Carbon Grids**

To request our new catalog, please call or write us today,  
or visit us online at [www.emsdiasum.com](http://www.emsdiasum.com)

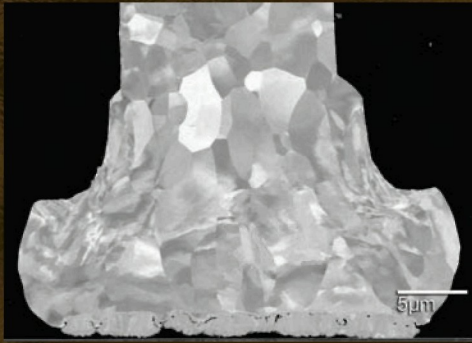
**Electron  
Microscopy  
Sciences**

P.O. Box 550 • 1560 Industry Rd. • Hatfield, Pa 19440  
(215) 412-8400 • Toll Free: 1-(800) 523-5874  
Fax: (215) 412-8450 or 8452  
email: [sgkcck@aol.com](mailto:sgkcck@aol.com) • [stacie@ems-secure.com](mailto:stacie@ems-secure.com)  
[www.emsdiasum.com](http://www.emsdiasum.com)

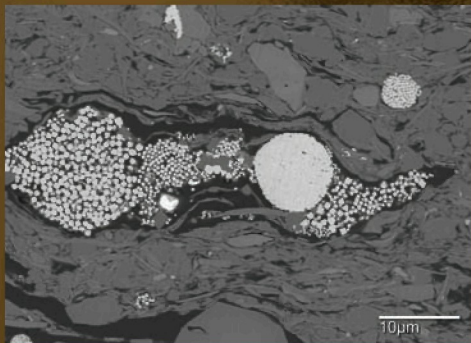
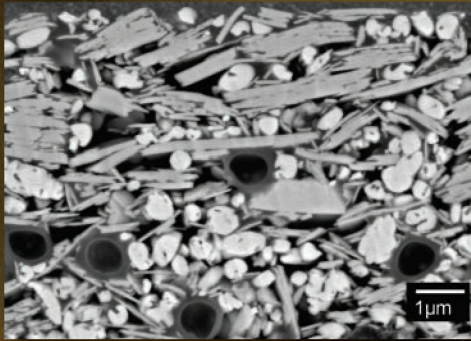


# Cross Section Perfection

Wire Bond

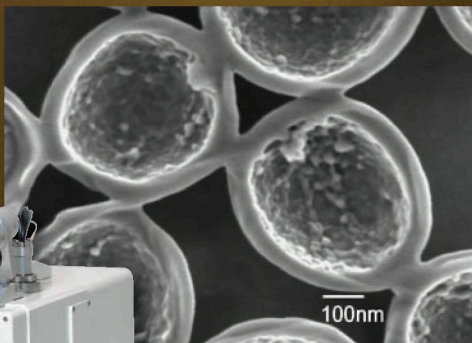


Paper Coating



Oil Shale

Latex



## Prepare to be amazed.

Some materials simply defy cross sectioning for the SEM. For those of you who are making do with smearing, distortion, crumbling, and contamination, **prepare to be amazed.**

Paper, shale, solar thin films, yeast, latex beads, solder bumps and wire bonds are just a few difficult materials that our customers routinely and pristinely cross section with the JEOL ion beam **Cross Section Polisher.**

Send us your most difficult samples and we'll show you how to achieve cross sections without deformation. Need more proof? Visit our extensive gallery of images at [www.jeolusa.com/CP2](http://www.jeolusa.com/CP2).

SEM Sample Prep

Another

**Extreme Imaging**  
solution from

**JEOL**

Stability • Performance • Productivity  
[www.jeolusa.com](http://www.jeolusa.com) • [salesinfo@jeol.com](mailto:salesinfo@jeol.com)  
978-535-5900

