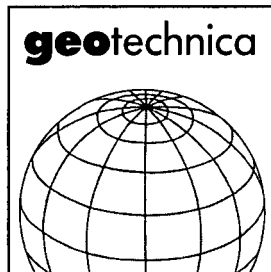


THE EARTH CONCERNS US ALL



**International Trade Fair
and Congress
for the Geosciences
and Geotechnology**

**Cologne, 5 – 8 May
1993**

The safeguarding of the planet and the conservation of the biosphere demand technical solutions, which cannot operate in isolation. Therefore geotechnica has set itself the objective of creating an international platform with the necessary overview, capable of promoting effective networking and achieving synergic enhancement.

geotechnica presents the networking of science and technology, of economics and geopolitics.

Only by coordinated interaction of all these spheres of interest can the problems worldwide with the environment be solved.

The geotechnica congress takes place at the same time as the trade event providing status information on the latest developments and research work in science and technology. 120 speakers from 16 countries will be tackling new concepts, applications and knowhow for conserving the Earth and meeting the challenges to science and technology under the general topic of "Exploiting natural resources, mining, challenges".

As in 1991 the Alfred Wegener Foundation will be organising the congress.

geotechnica '93 A concept succeeding

- 20,000 sq. metres of exhibiting space ■ 500 exhibitors
- 20,000 professional visitors from the geosciences and technology

GREAT BRITAIN: Tony Pittman, KölnMesse, German Chamber of Industry and Commerce, 6th Floor, Carolyn House, Dingwall Road, Croydon, Surrey CR9 3PM, Tel. 081-681-8166, Telefax 081-681-8028

Coupon

Please send me: Exhibiting documentation geotechnica '93
 Registration documentation for the congress
 Visitor information

Sent by _____

 **KölnMesse**

NOTES FOR CONTRIBUTORS

Contributions for publication should be addressed to The Editors, *Geological Magazine*, Department of Earth Sciences, Downing Street, Cambridge CB2 3EQ, England, or may be submitted through a member of the Editorial Advisory Board (addresses inside front cover). Rapid Communications should be clearly marked as such on the envelope. Submission implies that the manuscript has not been published previously nor currently submitted for publication elsewhere. Upon acceptance of a manuscript, the author will be asked to transfer copyright to the publisher.

All contributions, whether articles, correspondence or reviews, must be sent in triplicate and typed on one side of the paper, with wide margins and double-line spacing throughout. Any minor corrections should be made neatly in the typescript, leaving the margins clear. Contributions should follow the general style of papers in recent issues of the *Magazine*. The author is invited to nominate up to five possible referees, who will not necessarily be used.

Articles must be accompanied by a brief, informative rather than indicative, abstract. Headings should be set out clearly but not underlined. Primary headings should be in lower case, at margin, with arabic numeral; subheadings should be numbered 2.a., 2.b., etc., and tertiary headings 2.a.1., 2.a.2. No cross-references should be given by page number, but 'above' and 'below' should be used with the section specified, e.g. Section 2.a.2. The SI system of units should be used. The author should mark in the margin of the manuscript where figures and tables may be inserted. References to points in larger works should, where possible, quote the page reference, e.g. Ager, 1981, p. 102. Authors alone are responsible for the correctness of their references.

Rapid Communications should follow the style of articles and must be no more than four printed pages of the *Magazine* (approximately 5000 word-equivalents) including an abstract of no more than 100 words. These contributions will be dealt with by a streamlined schedule and should appear within six months from receipt. To meet this schedule, authors will be required to make revisions with minimal delay.

Discussions of papers which have already appeared in the *Magazine* are welcomed, subject to the four-page limit.

Tables should be typed with double-line spacing on sheets separate from the running text. Each table must have a caption that will make the data in the table intelligible without reference to the text.

Illustrations should be submitted at 1/2 × size to be published. The Author's name and figure number should be clearly marked on the

back of each piece of artwork. Figures will preferably be either single column (80 mm) or double column (169 mm) width when printed. The height of figure can vary in either width up to full print area height (240 mm). Illustrations should have scale bars, not '× 40'. Redrafting may be required by the editors if major savings in print area can be achieved without loss of information. Detailed maps or multiple logs may well require a whole page and the size of the lettering should match the necessary reduction. Where necessary break a figure into two facing pages; folding figures will not be accepted. Landscape figures should have no lettering upside down on the final printed page. Avoid where possible gross disparities in lettering size on the drawing. See figure below for optimum size of original and final lettering size. Boxes of ornament should be explained within the figure, not in the caption. Figures composed of photographs should be glossy prints presented at publication scale. Each component part should be named with a lower-case letter and given a scale bar. Photographic artwork is numbered as part of the sequence of figures, not as separate plates. The *Magazine* will be able to publish a limited number of free colour plates each year; the editors will decide which plates to accept on their scientific merit. Authors submitting colour plates are asked to give detailed reasons why colour is necessary. Duplicates of illustrations should be sent, and may be prints or, preferably, photocopies reduced to final size. Figure captions must be typed with double-line spacing on sheets separate from the running text.

References must be double-spaced and spelt out in full, e.g. BROOKS, M. & JAMES, D. G. 1975. The geological results of seismic refraction surveys in the Bristol Channel, 1970–73. *Journal of the Geological Society* 131, 163–82.

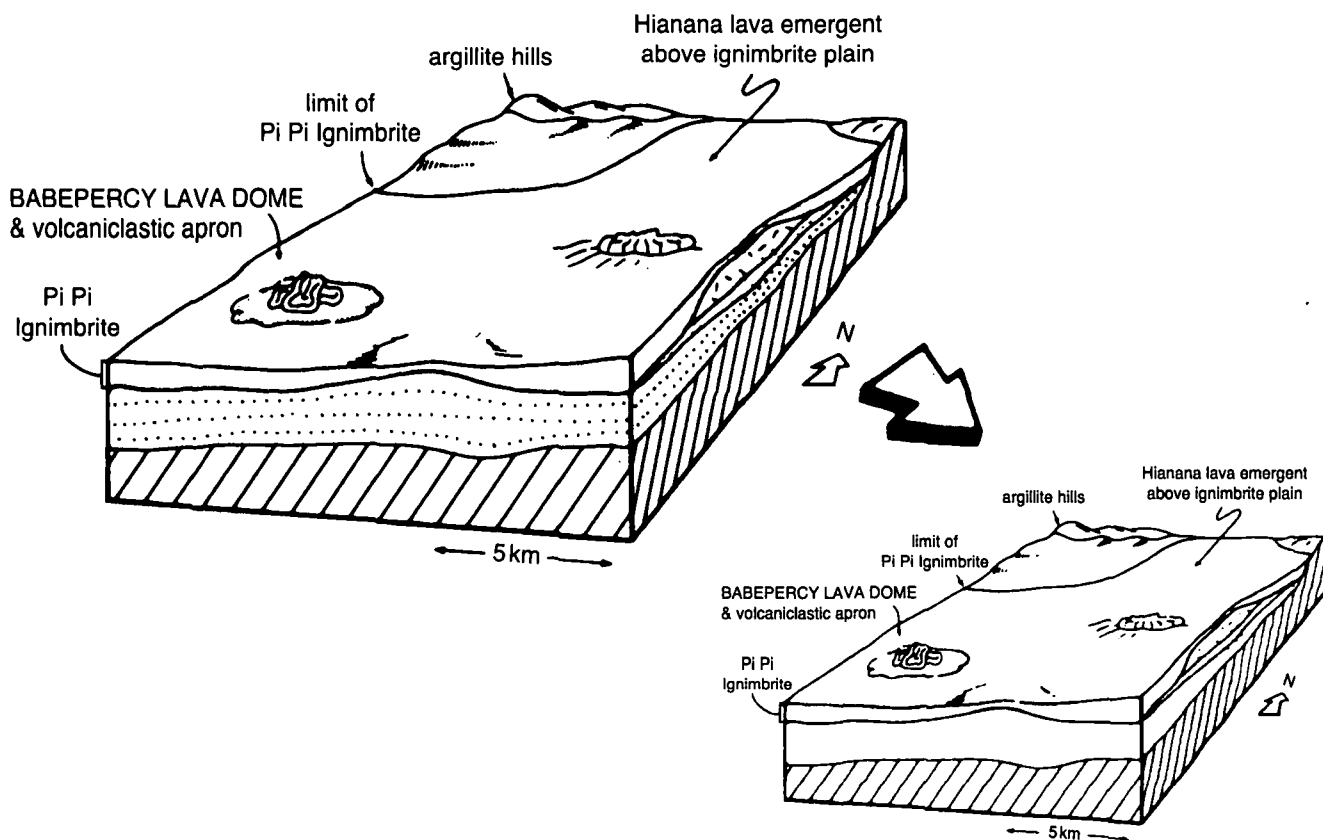
Books should be cited as:

AGER, D. V. 1981. *The Nature of the Stratigraphical Record*, 2nd ed. London: Macmillan, 122 pp.

BOTT, M. H. P. 1973. The evolution of the Atlantic north of the Faroe Islands. In *Implications of Continental Drift to the Earth Sciences*, vol. 1 (eds D. H. Tarling and S. N. Runcorn), pp. 175–89. London, New York: Academic Press.

Unpublished work should normally be referred to in the text in parentheses as, for example, 'private communication' or 'unpub. Ph.D. thesis, Univ. London, 1988', and not included in the reference list unless in the press.

Fifty offprints of each paper will be provided free of charge. Additional offprints may be purchased according to a set scale of charges if ordered when the proofs are returned.



Geological Magazine

CONTENTS

- The nodular granite of Castanheira, north central Portugal: origin of the nodules and evidence for diapiric mobilization of granite
 REAVY, R. J., HUTTON, D. H. W. & FINCH, A. A. 145-153
- New observations on a Pridoli plant assemblage from north Xinjiang, northwest China, with comments on its evolutionary and palaeogeographical significance
 CAI CHONG-YANG, DOU YA-WEI & EDWARDS, D. 155-170
- Apatite fission track data from southeast Ireland: implications for post-Variscan burial history
 KEELEY, M. L., LEWIS, C. L. E., SEVASTOPULO, G. D., CLAYTON, G. & BLACKMORE, R. 171-176
- Accretion tectonics in northern Eritrea revealed by remotely sensed imagery
 DRURY, S. A. & BERHE, S. M. 177-190
- Mineralogy and geochemistry of Mesozoic black shales and interbedded carbonates, southeastern Sicily: evaluation of diagenetic processes
 AZZARO, E., BELLANCA, A. & NERI, R. 191-202
- An Acadian mountain front in the English Lake District: the Westmorland Monocline
 KNELLER, B. C. & BELL, A. M. 203-213
- Conodonts from the lower Ordovician at Hunneberg, south-central Sweden
 LÖFGREN, A. 215-232
- Major southeast-directed Caledonian thrusting and folding in the Dalradian rocks of mid-Ulster: implications for Caledonian tectonics and mid-crustal shear zones
 ALSOP, G. I. & HUTTON, D. H. W. 233-244
- Relative sea-level changes and the development of a Cambrian transgression
 MCKIE, T. 245-256
- The Lower Cambrian Wreken Quartzite and the age of its unconformity on the Ercall Granophyre
 WRIGHT, A. E., FAIRCHILD, I. J., MOSELEY, F. & DOWNIE, C. 257-264
- RAPID COMMUNICATION**
 A modern analogue for the Lower Ordovician *Obolus* conglomerate of Estonia
 HILLER, N. 265-267
- DISCUSSIONS**
 Discussion of cathodoluminescence of Recent biogenic carbonates: an environmental and ontogenetic fingerprint
 Comment: G. M. FRIEDMAN 269
 Reply: V. BARBIN, K. RAMSEYER, J. P. DEBENAY, E. SCHEIN, M. ROUX & D. DECROUEZ 269-270
- Discussion on evidence for an unconformity at the base of the Eycott Volcanic Group
 Comment: N. J. SOPER 271
 Comment: A. H. COOPER & R. A. HUGHES 271-272
 Reply: D. MILLWARD & S. G. MOLYNEUX 272-273
- REVIEWS** 275-286
- PUBLICATIONS RECEIVED** 287

Printed in Great Britain by the University Press, Cambridge

CAMBRIDGE
 UNIVERSITY PRESS



0016-7568(199303)130:2;1-8