

**JOURNAL OF THE
MARINE BIOLOGICAL ASSOCIATION
OF THE UNITED KINGDOM**

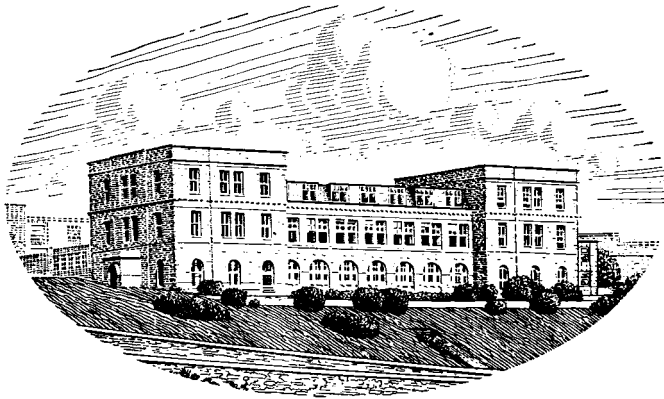
PUBLISHED BY
THE SYNDICS OF THE CAMBRIDGE UNIVERSITY PRESS

Bentley House, 200 Euston Road, London, N.W. 1
American Branch: 32 East 57th Street, New York, N.Y. 10022

© Copyright Marine Biological Association of the U.K.

Printed in Great Britain at the University Printing House, Cambridge

JOURNAL OF THE
MARINE BIOLOGICAL ASSOCIATION
OF THE UNITED KINGDOM



THE PLYMOUTH LABORATORY

VOLUME 53

1973

CAMBRIDGE
AT THE UNIVERSITY PRESS

1973

The Council of the Marine Biological Association wish it to be understood that they do not accept responsibility for the accuracy of statements published in this Journal, excepting when those statements are contained in an official report of the Council.

CONTENTS OF VOLUME 53

Number 1, pp. 1–235, 13 February 1973

Number 2, pp. 236–469, 16 May 1973

Number 3, pp. 471–748, 17 August 1973

Number 4, pp. 749–1027, 21 November 1973

	PAGE
Report of the Council: 1972–73	991
Income and Expenditure Account and Balance Sheet	1027
ABDULLAH, M. I., DUNLOP, H. M. and GARDNER, D. Chemical and hydrographic observations in the Bristol Channel during April and June 1971	299
ANGEL, M. V. and FASHAM, M. J. R. SOND Cruise 1965: Factor and cluster analyses of the plankton results, a general summary	185
BACKUS, R. H. <i>see</i> HARBISON, SMITH and BACKUS	615
BAKER, A. de C., CLARKE, M. R. and HARRIS, M. J. The N.I.O. combination net (RMT 1 + 8) and further developments of rectangular trawls	167
BANOUB, M. W. and LEB. WILLIAMS, P. J. Seasonal changes in the organic forms of carbon, nitrogen and phosphorus in sea water at E ₁ in the English Channel during 1968	695
BAYNE, B. L. Physiological changes in <i>Mytilus edulis</i> L. induced by temperature and nutritive stress <i>see also</i> GABBOTT and BAYNE	39 269
BLAXTER, J. H. S. Monitoring the vertical movements and light responses of herring and plaice larvae	635
BONE, Q. A note on the buoyancy of some lantern-fishes (Myctophoidei)	619
BONE, Q. and BROOK, C. E. R. On <i>Schedophilus medusophagus</i> (Pisces: Stromateoidei)	753
BONE, Q. and RYAN, K. P. The structure and innervation of the locomotor muscles of salps (<i>Tunicata: Thaliacea</i>)	873
BONEY, A. D. Observations on the silicoflagellate <i>Dictyocha speculum</i> ehrenb. from the Firth of Clyde	263
BROOK, C. R. <i>see</i> BONE and BROOK	753
BRYAN, G. W. The occurrence and seasonal variation of trace metals in the scallops <i>Pecten maximus</i> (L.) and <i>Chlamys opercularis</i> (L.)	145
BRYAN, G. W. and HUMMERSTONE, L. G. Brown seaweed as an indicator of heavy metals in estuaries in South-west England Adaptation of the polychaete <i>Nereis diversicolor</i> to estuarine sediments containing high concentrations of zinc and cadmium Adaptation of polychaete <i>Nereis diversicolor</i> to manganese in estuarine sediments	705 839 859
BURROWS, ELSIE M. <i>see</i> DE SILVA and BURROWS	895

	PAGE
CHEN, L. C-M., McLACHLAN, J., NEISH, A. C., F.R.S. and SHACKLOCK, P. F. The ratio of kappa- to lambda-carrageenan in nuclear phases of the rhodophycean algae, <i>Chondrus crispus</i> and <i>Gigartina stellata</i>	11
CHRETIENNOT, MARIE-JOSÈPHE The fine structure and taxonomy of <i>Platychrysis pigra</i> Geitler (Haptophyceae)	905
CLARKE, M. R. <i>see</i> BAKER, CLARKE and HARRIS	167
CORNELIUS, P. F. S. A taxonomic appraisal of the two species of <i>Stygiomedusa</i> [Coelenterata, Scyphozoa], with the first southern ocean records	609
CORNER, E. D. S., KILVINGTON, C. C. and O'HARA, S. C. M. Qualitative studies on the metabolism of naphthalene in <i>Maia squinada</i> (Herbst)	819
CORRIEL, R. <i>see</i> LESH-LAURIE and CORRIEL	885
DALY, J. M. Behavioural and secretory activity during tube construction by <i>Platynereis dumerilii</i> Aud & M. Edw. [Polychaeta: Nereidae]	521
DANDO, P. R. <i>see</i> HAMOIR, PIRONT, GERDAY and DANDO	763
DAVIES, J. M., FERRIER, N. C. and JOHNSTON, C. S. The ultrastructure of the meristoderm cells of the hapteron of <i>Laminaria</i>	237
DUNLOP, H. M. <i>see</i> ABDULLAH, DUNLOP and GARDNER	299
EDWARDS, C. The hydroid <i>Trichydra pudica</i> and its medusa <i>Pochella polynema</i> The medusa <i>Moderia rotunda</i> and its hydroid <i>Stegopoma fastigiatum</i> , with a review of <i>Stegopoma</i> and <i>Stegolaria</i> The medusa <i>Mitrocomella polydiademata</i> and its hydroid	87 573 601
ENNIS, G. P. Endogenous rhythmicity associated with larval hatching in the lobster <i>Homarus gammarus</i>	531
ETTL, H. and GREEN, J. C. <i>Chlamydomonas reginae</i> sp. nov. (Chlorophyceae), a new marine flagellate with unusual chloroplast differentiation	975
FASHAM, M. J. R. <i>see</i> ANGEL and FASHAM	185
FERGUSON, C. F. <i>see</i> MORRIS, FERGUSON and RAYMONT	657
FERRIER, N. C. <i>see</i> DAVIES, FERRIER and JOHNSTON	237
FINCHAM, A. A. The association of amphipods in the shallow-water sand habitat of Strangford Lough, Co. Down	119
FOGG, G. E. <i>See</i> SHAH and FOGG <i>See</i> IGNATIADES and FOGG	321 937
FORSTER, G. R. Line fishing on the continental slope. The selective effect of different hook patterns	749
GABBOTT, P. A. and BAYNE, B. L. Biochemical effects of temperature and nutritive stress on <i>Mytilus edulis</i> L.	269
GARDNER, D. <i>see</i> ABDULLAH, DUNLOP and GARDNER	299
GATTEN, R. R. <i>see</i> SARGENT, GATTEN and McINTOSH	649

	PAGE
GEORGE, J. D. and SOUTHWARD, EVE C. A comparative study of the setae of Pogonophora and Polychaetous Annelida	403
GERDAY, CH. <i>see</i> HAMOIR, PIRONT, GERDAY and DANDO	763
GIBBS, P. E. On the genus <i>Golfingia</i> (Sipuncula) in the Plymouth area with a description of a new species	73
GIBBS, P. E. and PROBERT, K. Notes on <i>Gyptis capensis</i> and <i>Sosane sulcata</i> [Annelida: Polychaeta] from the benthos off the South Coast of Cornwall	397
GOLDSPINK, G. <i>see</i> JOHNSTON and GOLDSPINK	17
GREEN, J. C. <i>see</i> Ettl and GREEN	975
HALCROW, W., MACKAY, D. W. and THORNTON, I. The distribution of trace metals and fauna in the Firth of Clyde in relation to the disposal of sewage sludge	721
HAMOIR, G., PIRONT, A., GERDAY, CH. and DANDO, P. R. Muscle proteins of the coelacanth <i>Latimeria chalumnae</i> Smith	763
HANNANT, P. J. <i>see</i> HOLLAND and HANNANT	833
HARBISON, G. R., SMITH JR., K. L. and BACKUS, R. H. <i>Stygiomedusa fabulosa</i> from the North Atlantic: its taxonomy, with a note on its natural history	615
HARRIS, M. J. <i>see</i> BAKER, CLARKE and HARRIS	167
HARRIS, R. P. Feeding, growth, reproduction and nitrogen utilization by the Harpacticoid copepod, <i>Triglopus brevicornis</i>	785
HAYWARD, J. <i>see</i> PARRY and HAYWARD	915
HELM, M. M., HOLLAND, D. L. and STEPHENSON, R. R. The effect of supplementary algal feeding of a hatchery breeding stock of <i>Ostrea edulis</i> L. on larval vigour	673
HERON, A. C. A new type of heart mechanism in the invertebrates A specialized predator-prey relationship between the copepod <i>Sapphirina angusta</i> and the pelagic tunicate <i>Thalia democratica</i>	425 429
HERRING, P. J. Depth distribution of the carotenoid pigments and lipids of some oceanic animals. 2. Decapod crustaceans	539
HOLLAND, D. L. and HANNANT, P. J. Addendum to a micro-analytical scheme for the bio-chemical analysis of marine invertebrate larvae	833
HOLLAND, D. L. and SPENCER, B. E. Biochemical changes in fed and starved oysters, <i>Ostrea edulis</i> L. during larval development, metamorphosis and early spat growth. <i>see also</i> HELM, HOLLAND and STEPHENSON	287 673
HUMMERSTONE, L. G. <i>See</i> BRYAN and HUMMERSTONE <i>See</i> BRYAN and HUMMERSTONE <i>See</i> BRYAN and HUMMERSTONE	705 839 859

	PAGE
HUNT, S.	
Fine structure of the secretory epithelium in the hypobranchial gland of the prosobranch gastropod mollusc <i>Buccinum undatum</i> L.	59
IGNATIADES, L.	
Studies on the factors affecting the release of organic matter by <i>Skeletonema costatum</i> (Greville) Cleve in field conditions	923
IGNATIADES, L. and FOGG, G. E.	
Studies on the factors affecting the release of organic matter by <i>Skeletonema costatum</i> (Greville) Cleve in culture	937
JOHNSTON, C. S. <i>see</i> DAVIES, FERRIER and JOHNSTON	237
JOHNSTON, I. A. and GOLDSPINK, G.	
A study of glycogen and lactate in the myotomal muscles and liver of the Coalfish (<i>Cadus virens</i> L.) during sustained swimming	17
JOYCE, J. R.	
An improved bottom-water sampler	741
KILVINGTON, C. C. <i>see</i> CORNER, KILVINGTON and O'HARA	819
LESH-LAURIE, GEORGIA E. and CORRIEL, R.	
Scyphistoma regeneration from isolated tentacles in <i>Aurelia aurita</i>	885
MACKAY, D. W. <i>see</i> HALCROW, MACKAY and THORNTON	721
MAUCLINE, J.	
Inter-moult growth of species of Mysidacea [Crustacea]	569
The broods of British Mysidacea [Crustacea]	801
MCINTOSH, R. <i>see</i> SARGENT, GATTEN and MCINTOSH	649
MCINTYRE, A. D. and MURISON, D. J.	
The meiofauna of a flatfish nursery ground	93
McLACHLAN, J. <i>see</i> CHEN, McLACHLAN, NEISH and SHACKLOCK	11
McLAUGHLIN, PATSY	
Remarks on the presumed example of hybridization between two species of <i>Pagurus</i> [Crustacea: Decapoda: Paguridae]	563
MORRIS, R. J.	
Relationships between the sex and degree of maturity of marine crustaceans and their lipid compositions	27
MORRIS, R. J., FERGUSON, C. F. and RAYMONT, J. E. G.	
Preliminary studies on the lipid metabolism of <i>Neomysis integer</i> , involving labelled feeding experiments	657
MURISON, D. J. <i>see</i> MCINTYRE and MURISON	93
NEISH, A. C. <i>see</i> CHEN, McLACHLAN, NEISH and SHACKLOCK	11
NOTT, J. A.	
Settlement of the larvae of <i>Spirorbis spirorbis</i> L.	437
O'HARA, S. C. M. <i>see</i> CORNER, KILVINGTON and O'HARA	819
PARRY, G. D. R. and HAYWARD, J.	
The uptake of ⁶⁵ Zn by <i>Dunaliella tertiolecta</i> Butcher	915

	PAGE
PENTREATH, R. J.	
The accumulation from water of ⁶⁵ Zn, ⁵⁴ Mn, ⁵⁸ Co and ⁵⁹ Fe by the mussel, <i>Mytilus edulis</i>	127
PILGRIM, R. L. C.	
Axial skeleton and musculature in the thorax of the hermit crab, <i>Pagurus berhardus</i> [Anomura: Paguridae]	363
PIRONT, A. <i>see</i> HAMOIR, PIRONT, GERDAY and DANDO	763
POTTS, G. W.	
Cleaning symbiosis among British fish with special reference to <i>Crenilabrus melops</i> (Labridae)	1
PROBERT, K. <i>see</i> GIBBS and PROBERT	397
RAYMONT, J. E. G. <i>see</i> MORRIS, FERGUSON and RAYMONT	657
REAY, P. J.	
Some aspects of the biology of the sandeel, <i>Ammodytes tobianus</i> L., in Langstone Harbour, Hampshire	325
RUSSELL, F. S., F.R.S.	
A summary of the observations on the occurrence of planktonic stages of fish off Plymouth 1924-1972	347
RYAN, K. P. <i>see</i> BONE and RYAN	873
SARGENT, J. R., GATTEN, R. R. and MCINTOSH, R.	
The distribution of neutral lipids in shark tissues	649
SHACKLOCK, P. F. <i>see</i> CHEN, McLACHLAN, NEISH and SHACKLOCK	11
SHAH, N. M. and FOGG, G. E.	
The determination of glycollic acid in sea water	321
SHALE, D. <i>see</i> FRETTER and SHALE	471
DE SILVA, M. W. R. N. and BURROWS, ELSIE M.	
An experimental assessment of the status of the species <i>Enteromorpha intestinalis</i> (L.) Link and <i>Enteromorpha compressa</i> (L.) Grev.	895
SMITH, D. A. S.	
The population biology of <i>Lacuna pallidula</i> (Da Costa) and <i>Lacuna vincta</i> (Montagu) in North-East England	493
SMITH JR., K. L. <i>see</i> HARBISON, SMITH JR. and BACKUS	615
SOUTHWARD, EVE C.	
The distribution of glycogen in the tissues of <i>Siboglinum atlanticum</i> [Pogonophora]	665
<i>see also</i> GEORGE and SOUTHWARD	403
SPENCER, B. E. <i>see</i> HOLLAND and SPENCER	287
STEBBING, A. R. D.	
Competition for space between the epiphytes of <i>Fucus serratus</i> L.	247
STEPHENSON, R. R. <i>see</i> HELM, HOLLAND and STEPHENSON	673
STEVENS, J. D.	
Stomach contents of the blue shark (<i>Prionace glauca</i> L.) off South-West England	357
THORNTON, I. <i>see</i> HALCROW, MACKAY and THORNTON	721
WALKER, G.	
Frontal horns and associated gland cells of the nauplii of the barnacles <i>Balanus hameri</i> , <i>Balanus balanoides</i> and <i>Elminius modestus</i> (Crustacea: Cirripedia)	455

	PAGE
WHITFIELD, M.	
Procedures for calculating the osmotic coefficient of artificial sea waters	685
WILLIAMS, P. J. LEB. <i>see</i> BANOUB and WILLIAMS	695
WIMPENNY, the late R. S.	
The size of diatoms. V. The effect of animal grazing	957

ABSTRACTS OF MEMOIRS
RECORDING WORK DONE IN THE PLYMOUTH LABORATORY

BAKER, P. F., HODGKIN, A. I. & RIDGWAY, E. B., 1971. Depolarization and calcium in squid giant axons	233
BAKER, P. F. & CRAWFORD, A. C., 1972. Mobility and transport of magnesium in squid giant axons	987
BONE, Q., 1972. Some notes on histological methods for peripheral nerves	234
BONE, Q., 1972. The dogfish neuromuscular junction: dual innervation of vertebrate striated muscle fibres?	234
CLARKE, M. R., 1972. New technique for the study of sperm-whale migration	465
CORKETT, C. J., 1972. Development rate of copepod eggs of the genus <i>Calanus</i>	745
CORNER, E. D. S., 1972. Laboratory studies related to zooplankton production in the sea	233
CORNER, E. D. S., 1973. Phosphorus in marine zooplankton	745
DAVIES, A. G., 1973. The kinetics of and a preliminary model for the uptake of radio-zinc by <i>Phaeodactylum tricorutum</i> in culture	987
DENTON, E. J., GILPIN-BROWN, J. B. & WRIGHT, P. G., 1972. The angular distribution of the light produced by some mesopelagic fish in relation to their camouflage	465
DILLY, P. N. & MESSENGER, J. B., 1972. The branchial gland: a site of haemocyanin synthesis in <i>Octopus</i>	465
GIBBS, P. E., 1972. Polychaete annelids from the Cook Islands	466
GIBBS, P. E. & BRYAN, G. W., 1972. A study of strontium, magnesium, and calcium in the environment and exoskeleton of decapod crustaceans, with special reference to <i>Uca burgersi</i> on Barbuda, West Indies	234
GILPIN-BROWN, J. B., 1972. Buoyancy mechanisms of cephalopods in relation to pressure	466
GREEN, J. C., 1973. Studies in the fine structure and taxonomy of flagellates in the genus <i>Pavlova</i> . II. A freshwater representative, <i>Pavlova granifera</i> (Mack) comb. nov.	987
HOLME, N. A., 1971. Disposal of china clay waste in the English Channel	234
HUGHES, G. M., 1972. The relationship between cardiac and respiratory rhythms in the dogfish, <i>Scyliorhinus canicula</i> L.	745
IZZARD, C. S., 1973. Development of polarity and bilateral asymmetry in the pallear bud of <i>Botryllus schlosseri</i> (Pallas)	746
KRESS, A., 1972. Veränderungen der Eiakapselvolumina während der Entwicklung versiedener Opisthobranchier-Arten (Mollusca, Gastropoda). Changes in egg-capsule volumes during the development of different opisthobranch species (Mollusca, Gastropoda)	988
NICOL, J. A. C., ARNOTT, H. J. & BEST, A. C. G., 1973. Tapeta lucida in bony fishes (Actinopterygii): a survey	746

	PAGE
PINGREE, R. D., 1972. Mixing in the deep stratified ocean	466
POTTS, G. W., 1973. The ethology of <i>Labroides dimidiatus</i> (Cuv. & Val.) (Labridae, Pisces) on Aldabra	988
ROBERTS, B. L. & RUSSELL, I. J., 1972. The activity of lateral-line efferent neurones in stationary and swimming dogfish	466
RUSSELL, I. J. & ROBERTS, B. L., 1972. Inhibition of spontaneous lateral-line activity by efferent nerve stimulation	467
SMALDON, G., 1973. Osmoregulation in <i>Pisidea longicornis</i> (L.) and <i>Porcellana platycheles</i> (Pennant) (Decapoda, Anomura) subjected to reduced salinities	746
SOUTHWARD, A. J. & SOUTHWARD, E. C., 1972. Observations on the role of dissolved organic compounds in the nutrition of benthic invertebrates. III. Uptake in relation to organic content of the habitat	467
STANFIELD, P. R., 1972. Electrical properties of white and red muscle fibres of the elasmobranch fish <i>Scyliorhinus canicula</i>	233
STODDART, D. R., BRYAN, G. W. & GIBBS, P. E., 1973. Inland mangroves and water chemistry, Barbuda, West Indies	746
WHITFIELD, M., 1972. Progress towards a chemical model for sea water	747

BOOKS RECEIVED

<i>The Cichlid Fishes of the Great Lakes of Africa; their Biology and Evolution.</i> By G. FRYER & T. D. ILES	235
<i>The Gulf Stream.</i> By T. F. GASKELL	235
<i>Carotenoids.</i> Edited by O. ISLER	235
<i>Trawling and New Methods of Continuous Fishing.</i> By YU. N. KOSTYUNIN, I. V. NIKONOROV, B. KUTAKOV, N. KUDRYAVTSEV & V. SAVRASOV	235
<i>A Guide to Marine Coastal Plankton; With Emphasis on the Monterey, Tomales and Bodega Bays of California.</i> By D. L. SMITH	235
<i>Physiology of Echinoderms.</i> By J. BINYON	469
<i>The Whale: Mighty Monarch of the Sea.</i> By J.-Y. COUSTEAU & P. DIOLÉ	469
<i>Conservation and Productivity of Natural Waters.</i> Edited by R. W. EDWARDS & D. J. GARROD	469
<i>Atlas of the Living Resources of the Seas.</i> By the FOOD AND AGRICULTURAL ORGANIZATION OF THE UNITED NATIONS, DEPARTMENT OF FISHERIES	469
<i>Nemerteans.</i> By R. GIBSON	469
<i>A Guide to Marine Pollution: Seminar in Conjunction with the FAO Technical Conference on Marine Pollution and its effects on Resources and Fishing, Rome, 9-18 December 1970.</i> Edited by E. D. GOLDBERG	469
<i>Functional Morphology and Classification of Teleostean Fishes.</i> By W. A. GOSLINE	469
<i>The Biology of Lampreys.</i> Edited by M. W. HARDISTY & I. C. POTTER	469
<i>Problems of Relative Growth.</i> By SIR JULIAN HUXLEY	469
<i>Evolution of the Metazoan Life Cycle: A Comprehensive Theory.</i> By G. JAGERSTEN	469
<i>Fish-watching and Photography.</i> By K. McDONALD	469

	PAGE
<i>Invertebrate Zoology</i> . By P. A. MEGLITSCH	469
<i>The Oxford Book of Vertebrates: Cyclostomes, Fish, Amphibians, Reptiles and Mammals</i> . By M. NIXON & D. WHITELEY	469
<i>Methods in Aquatic Microbiology</i> . By A. G. RODINA	469
<i>Ecology and Palaeoecology in Marine Environments</i> . By W. SCHÄFER	469
<i>Elements of Marine Ecology</i> . By R. V. TAIT	469
<i>Biodeterioration of Materials</i> . Edited by A. H. WALTERS & E. H. HUECK-VAN DER PLAS	469
<i>Growth and Ecology of Fish Populations</i> . By A. H. WEATHERLEY	469
<i>Oceanography and Marine Biology: An Annual Review</i> . Edited by H. BARNES	748
<i>Research Methods in Marine Biology</i> . Edited by C. SCHLIEPER	748
<i>The Phyla Sipuncula and Echiura</i> . By A. C. STEPHEN & S. J. EDMONDS	748
<i>Seventy Years Agrowing: A History of the International Council for the Exploration of the Sea, 1902-1972</i> . By A. E. J. WENT	748
<i>Octopus and Squid; The Soft Intelligence</i> . By J.-Y. COUSTEAU & P. DIOLÉ	989
<i>Whales, Dolphins and Seals; With Special Reference to the New Zealand Region</i> . By D. E. GASKIN	989
<i>A Life between Tidemarks on Rocky Shores</i> . By T. A. STEPHENSON & A. STEPHENSON	989
<i>Introduction to Marine Environments</i> . By R. ZOTTOLI	989

CORRIGENDA

Page 5, Table 3, for *pranzia read praniza*

Page 139, line 3, for $1/12k^2$ read $1/12K^2$

Page 347, Summary, 3rd paragraph, for planktonic-rich read plankton-rich

Page 354, References, for ALLEN, E., 1917 read ALLEN, E. J., 1917

Page 596, References, BONNEVIE, K., 1899b, for (Zoologic) read (Zoologi)

Volume 53, No. 3, back page of cover, List of Contents, titles of papers *should read*:

	PAGE
FRETTER, VERA and SHALE, D. Seasonal changes in population density and vertical distribution of prosobranch veligers in offshore plankton at Plymouth	471
SMITH, D. A. S. The population biology of <i>Lacuna pallidula</i> (Da Costa) and <i>Lacuna vincta</i> (Montagu) in North-East England	493
DALY, JOHN M. Behavioural and secretory activity during tube construction by <i>Platynereis dumerilii</i> Aud & M. Edw. [Polychaeta: Nereidae]	521
ENNIS, G. P. Endogenous rhythmicity associated with larval hatching in the lobster <i>Homarus gammarus</i>	531
HERRING, P. J. Depth distribution of the carotenoid pigments and lipids of some oceanic animals. 2. Decapod crustaceans	539
MCLAUGHLIN, PATSY A. Remarks on the presumed example of hybridization between two species of <i>Pagurus</i> [Crustacea: Decapoda: Paguridae]	563
MAUCLINE, J. Inter-moult growth of species of Mysidacea [Crustacea]	569
EDWARDS, C. The medusa <i>Modeeria rotunda</i> and its hydroid <i>Stegopoma fastigiatum</i> with a review of <i>Stegopoma</i> and <i>Stegolaria</i>	573
EDWARDS, C. The medusa <i>Mitrocomella polydiademata</i> and its hydroid	601
CORNELIUS, P. F. S. A taxonomic appraisal of the two species of <i>Stygiomedusa</i> [Coelenterata, Scyphozoa], with the first Southern Ocean records	609
HARBISON, G. R., SMITH JR., K. L. and BACKUS, R. H. <i>Stygiomedusa fabulosa</i> from the North Atlantic: its taxonomy, with a note on its Natural History	615
BONE, Q. A note on the buoyancy of some lantern-fishes (Myctophoidei)	619
BLAXTER, J. H. S. Monitoring the vertical movements and light responses of herring and plaice larvae	635
SARGENT, J. R., GATTEN, R. R. and MCINTOSH, R. The distribution of neutral lipids in shark tissues	649
MORRIS, R. J., FERGUSON, C. F. and RAYMONT, J. E. G. Preliminary studies on the lipid metabolism of <i>Neomysis integer</i> , involving labelled feeding experiments	657
SOUTHWARD, EVE C. The distribution of glycogen in the tissues of <i>Siboglinum atlanticum</i> [Pogonophora]	665
HELM, M. M., HOLLAND, D. L. and STEPHENSON, R. R. The effect of supplementary algal feeding of a hatchery breeding stock of <i>Ostrea edulis</i> L. on larval vigour	673
WHITFIELD, M. Procedures for calculating the osmotic coefficient of artificial sea waters	685
BANOUB, M. W. and WILLIAMS, P. J. LEB. Seasonal changes in the organic forms of carbon, nitrogen and phosphorus in sea water at E ₁ in the English Channel during 1968	695

	PAGE
BRYAN, G. W. and HUMMERSTONE, L. G. Brown seaweed as an indicator of heavy metals in estuaries in South-West England	705
HALCROW, W., MACKAY, D. W. and THORNTON, I. The distribution of trace metals and fauna in the Firth of Clyde in relation to the disposal of sewage sludge	721
JOYCE, J. R. An improved bottom-water sampler	741
Page 859, Materials and Methods, line 5, <i>for</i> (cf. p.) <i>read</i> (cf. p. 862)	
Page 901, Fig. 3, Captions, <i>for</i> Rock surface – Rock pools <i>read</i> (a) Rock surface (b) Rock pools	
Page 949, bottom line, <i>for</i> (50 mg ⁻¹) <i>read</i> (59 mg l ⁻¹)	

THE MARINE BIOLOGICAL ASSOCIATION OF THE UNITED KINGDOM

THE ASSOCIATION was founded in 1884 to promote accurate researches leading to the advancement of zoological and botanical science and to an increase in our knowledge of the food, life, conditions and habits of British fishes. The work of the Association is controlled by a Council elected annually by its subscribing members.

Professor T. H. Huxley took the chair at the initial meeting held in the rooms of the Royal Society and was elected the first President. Among those present were Sir John Lubbock (afterwards Lord Avebury), Sir Joseph Hooker, Professor H. N. Moseley, Mr G. J. Romanes, and Sir E. Ray Lankester who, after Professor Huxley, was for many years president of the Association. It was decided to build a laboratory at Plymouth, where a rich and varied fauna is found.

The Plymouth Laboratory was opened in June 1888, and, since that date, considerable additions have been made to the buildings, including a library, lecture-hall, and extensive laboratory accommodation with up-to-date equipment. Additional sea-water reservoirs have also been built, and an aquarium, modernized in 1959, opened to the public.

Since its foundation the Association has been supported by subscriptions and donations from private members, universities, learned societies, the Fishmongers' Company and other public bodies. For some time past, however, the main financial support for the work of the Plymouth Laboratory has come from Government funds, and since 1965 the Laboratory has been grant-aided through the Natural Environment Research Council.

The Marine Biological Association, under the direction of its Council, undertakes research in all branches of marine science and the main results are published in this journal. Accounts of the laboratory and aquarium are to be found in Vol. 27 (p. 761), Vol. 39 (p. 391) and Vol. 43 (p. 281), and summaries of the activities and research of the Association are given annually in the Report of the Council in the November issue of the Journal.

The laboratory is open throughout the year and its work is carried out by a fully qualified research staff under the supervision of the Director. The names of the members of the staff will be found on the inner page of the front cover. Accommodation is available for British and foreign scientific workers who wish to carry out independent research in all branches of marine science. Arrangements are made for courses for advanced students, and marine animals and plants are supplied to educational institutions.

Work at sea is undertaken by three research vessels and by a motor boat, and these also collect the specimens required in the laboratory.

TERMS OF MEMBERSHIP

	£
Annual Members, receiving the Journal . . . per annum	5.00
Annual Members, without the Journal . . . per annum	1.05
Junior Members, receiving the Journal . . . per annum	2.00
Life Members Composition fee	60.00
Founders	100.00
Governors	500.00

Members of the Association have the following rights and privileges: they elect annually the Officers and Council; they are entitled to receive the Journal of the Association at a reduced rate; they are admitted to view the laboratory at Plymouth; they have the first claim to rent a place in the laboratory for research, with use of tanks, boats, etc; they have the privilege of occupying a table for one week in each year free of charge; and they have access to the books in the library at Plymouth during working hours.

The Commissioners of Inland Revenue have approved the Association for the purposes of Section 16, Finance Act, 1958, and that the whole of the annual subscription paid by a member who qualifies for relief under the section will be allowable as a deduction from his emoluments assessable to income tax under Schedule B.

All correspondence should be addressed to the Director, The Laboratory, Citadel Hill, Plymouth, PL1 2PB.

CONTENTS

	PAGE
FORSTER, G. R. Line fishing on the continental slope. The selective effect of different hook patterns	749
BONE, Q. and BROOK, C. E. R. On <i>Schedophilus medusophagus</i> (Pisces: Stromateoidei)	753
HAMOIR, G., PIRONT, A., GERDAY, CH. and DANDO, P. R. Muscle proteins of the coelacanth <i>Latimeria chalumnae</i> Smith	763
HARRIS, R. P. Feeding, growth, reproduction and nitrogen utilization by the Harpacticoid copepod, <i>Trigoiopus brevicornis</i>	785
MAUHLIN, J. The broods of British Mysidacea (Crustacea)	801
CORNER, E. D. S., KILVINGTON, C. C. and O'HARA, S. C. M. Qualitative studies on the metabolism of naphthalene in <i>Maia squinado</i> (Herbst)	819
HOLLAND, D. L. and HANNANT, P. J. Addendum to a micro-analytical scheme for the biochemical analysis of marine invertebrate larvae	833
BRYAN, G. W. and HUMMERSTONE, L. G. Adaptation of the polychaete <i>Nereis diversicolor</i> to estuarine sediments containing high concentrations of zinc and cadmium	839
BRYAN, G. W. and HUMMERSTONE, L. G. Adaptation of the polychaete <i>Nereis diversicolor</i> to manganese in estuarine sediments	859
BONE, Q. and RYAN, K. P. The structure and innervation of the locomotor muscles of salps (<i>Tunicata: Thaliacea</i>)	873
LESH-LAURIE, GEORGIA E. and CORRIEL, R. Scyphistoma regeneration from isolated tentacles in <i>Aurelia aurita</i>	885
DE SILVA, M. W. R. N. and BURROWS, ELSIE M. An experimental assessment of the status of the species <i>Enteromorpha intestinalis</i> (L.) Link and <i>Enteromorpha compressa</i> (L.) Grev.	895
CHRETIENNOT, MARIE-JOSÈPHE. The fine structure and taxonomy of <i>Platyochrysis pigra</i> Geitler (Haptophyceae)	905
PARRY, G. D. R. and HAYWARD, J. The uptake of ⁶⁵ Zn by <i>Dunaliella tertiolecta</i> Butcher	915
IGNATIADIS, L. Studies on the factors affecting the release of organic matter by <i>Skeletonema costatum</i> (Greville) Cleve in field conditions	923
IGNATIADIS, L. and FOGG, G. E. Studies on the factors affecting the release of organic matter by <i>Skeletonema costatum</i> (Greville) Cleve in culture.	937
WIMPENNY, the late R. S. The size of diatoms. V. The effect of animal grazing.	957
ETTL, H. and GREEN, J. C. <i>Chlamydomonas reginae</i> sp.nov. (Chlorophyceae), a new marine flagellate with unusual chloroplast differentiation	975
ABSTRACTS OF MEMOIRS	987
LIST OF BOOKS RECEIVED	989
REPORT OF THE COUNCIL FOR 1972-73	991
BALANCE SHEET 1972-73	1027

© Copyright by the Marine Biological Association of the U.K. 1973

The 1973 subscription price of the Journal to non-members of the Association is £22.00 net a volume of four parts, post free, or US\$70.00 in U.S.A. and Canada, payable in advance. Subscriptions may be sent to any bookseller or to the Cambridge University Press, and in U.S.A. and Canada to the Cambridge University Press American Branch.

CAMBRIDGE UNIVERSITY PRESS

BENTLEY HOUSE, 200 EUSTON ROAD, LONDON NW1 2DB

AMERICAN BRANCH: 32 EAST 57TH STREET, NEW YORK, N.Y.10022

Printed in Great Britain at the University Printing House, Cambridge