

The Diamond Jubilee Summer Meeting of the Nutrition Society was held at the University of Sheffield on 10–12 July 2001

Nutrition Society Medal Lecture

The role of the skeleton in acid–base homeostasis

Susan A. New

Centre for Nutrition and Food Safety, School of Biomedical & Life Sciences, University of Surrey, Guildford, Surrey GU2 7XH, UK

Nutritional strategies for optimising bone health throughout the life cycle are extremely important, since a dietary approach is more popular amongst osteoporosis sufferers than drug intervention, and long-term drug treatment compliance is relatively poor. As an exogenous factor, nutrition is amenable to change and has relevant public health implications. With the growing increase in life expectancy, hip fractures are predicted to rise dramatically in the next decade, and hence there is an urgent need for the implementation of public health strategies to target prevention of poor skeletal health on a population-wide basis. The role that the skeleton plays in acid–base homeostasis has been gaining increasing prominence in the literature; with theoretical considerations of the role alkaline bone mineral may play in the defence against acidosis dating as far back as the late 19th century. Natural, pathological and experimental states of acid loading and/or acidosis have been associated with hypercalciuria and negative Ca balance and, more recently, the detrimental effects of ‘acid’ from the diet on bone mineral have been demonstrated. At the cellular level, a reduction in extracellular pH has been shown to have a direct enhancement on osteoclastic activity, with the result of increased resorption pit formation in bone. A number of observational, experimental, clinical and intervention studies over the last decade have suggested a positive link between fruit and vegetable consumption and the skeleton. Further research is required, particularly with regard to the influence of dietary manipulation using alkali-forming foods on fracture prevention. Should the findings prove conclusive, a ‘fruit and vegetable’ approach to bone health maintenance may provide a very sensible (and natural) alternative therapy for osteoporosis treatment, which is likely to have numerous additional health-related benefits.

Skeletal health: Acid–base balance: Fruit and vegetable consumption: Bone metabolism: Dietary potassium

‘One farmer says to me, ‘You cannot live on vegetable food solely, and it furnishes nothing to make bones with,’ and so he religiously devotes a part of his day to supplying his system with the raw material of bones; walking all the while he talks behind his oxen, which, with vegetable-made bones, jerk him and his lumbering plow along in spite of every obstacle.’

H. D. Thoreau (Barzel, 1970; First International Symposium on Osteoporosis, June 1969)

Introductory comments

Defining bone health

Throughout the life cycle, the skeleton requires optimum development and maintenance of its integrity, since the resultant effect of poor bone health is osteoporotic fracture. Osteoporosis is defined as a metabolic bone disease that has two predominant characteristics; the first being low bone mass and the second being micro architectural deterioration of bone tissue, with both factors leading to enhanced bone

fragility and a consequent increase in fracture risk (Royal College of Physicians, 2000). Bone ‘weakness’ relates to both poor structural quality and decreased bone mass, and an illustration of ‘normal’ and ‘osteoporotic’ bone can be seen in Fig. 1

Considerable alterations occur within the skeleton throughout an individual’s life, and it is now well established that there are two principal mechanisms determining adult bone health: (1) the maximum attainment of peak bone mass which is achieved during growth and early adulthood;

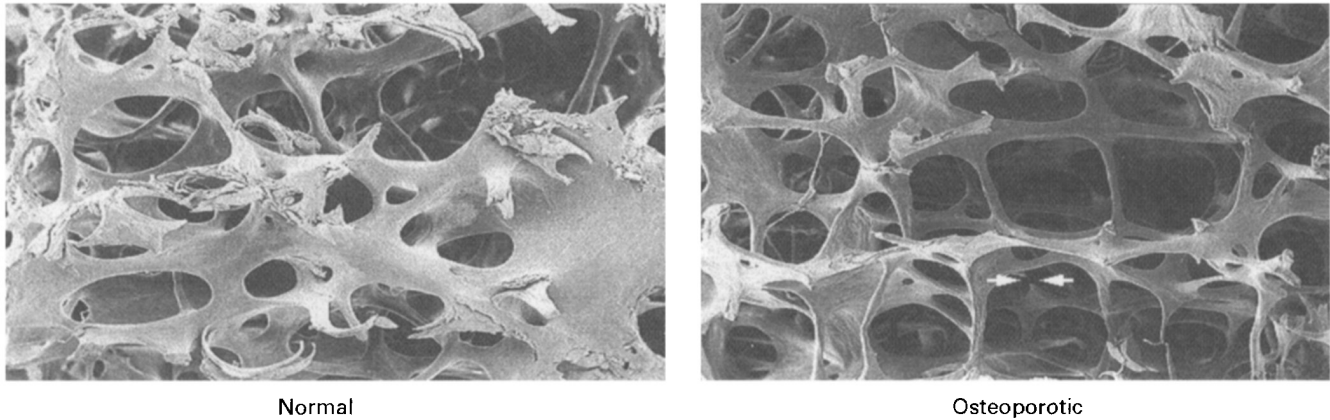


Fig. 1. Definition of osteoporosis: a progressive systemic skeletal disease characterised by low bone mass and micro-architectural deterioration of bone tissue, with consequent increase in bone fragility and susceptibility to fracture. (From World Health Organization, 1994; Royal College of Physicians, 2000.)

(2) the rate of bone loss with advancing age, with the menopausal years being a time of considerable concern for women. An example of the changes that occur in bone mass with ageing, for both men and women, can be seen in Fig. 2.

Implications of osteoporosis from a public health perspective

Current data estimate that one in three women and one in twelve men over the age of 55 years will suffer from osteoporosis in their lifetime. Approximately 200 000 osteoporotic fractures occurred in the UK alone in 2000 (National Osteoporosis Society, 2002), with financial costs to the National Health Service in excess of £1.7 billion per year (Torgerson *et al.* 2001). In the context of other conditions, as indicated in Fig. 3, osteoporosis is grossly under-funded when compared with other diseases such as cardiovascular disease and cancer. Given the projected rise

in osteoporotic fracture worldwide to 6.26 million in the year 2050 (compared with 1.66 million in 1990; World Health Organization, 1994), there can be no doubt that the future economic impact of osteoporosis will be astronomical.

Determinants of bone health: modifiable v. non-modifiable factors

The pathogenesis of osteoporosis is multi-factorial (Cummings *et al.* 1995). Both the development of peak bone mass in the younger population and the rate of bone loss in post-menopausal women and the elderly are determined by a combination of genetic, endocrine, mechanical and nutritional factors, with evidence of extensive interactions within and between these groups (Heaney, 2000; Fig. 4). It is indeed this phenomenon that captivates bone health researchers alike, and essentially characterises the 'all-consuming' nature of the discipline of osteology.

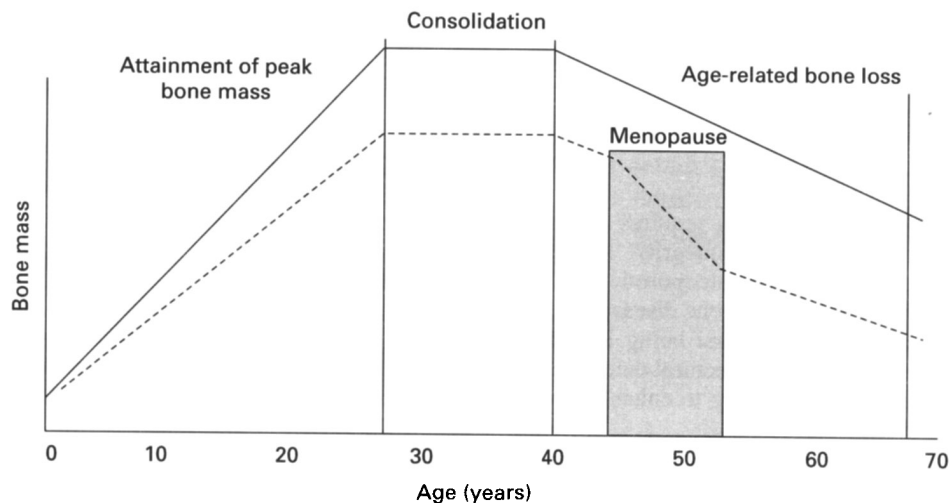


Fig. 2. Alterations in skeletal mass in men (—) and women (---) throughout the life cycle.

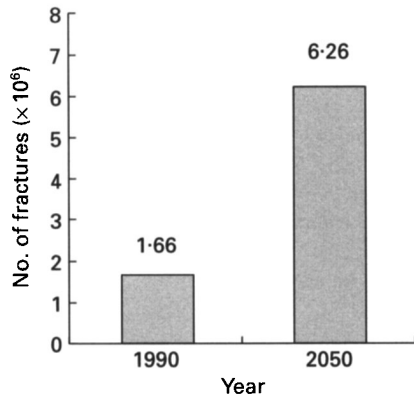


Fig. 3. Osteoporosis in context. In the UK the annual cost of osteoporosis is £1.7 billion compared with the annual cost of CHD which is £1.6 billion. Medication costs however are £527 million for CHD compared with £52 million for osteoporosis. (From Torgerson *et al.* 2001.)

There is good evidence to show that endogenous factors have a very important influence on the skeleton. Research focusing on monozygotic and dizygotic twins as well as comparisons between mother and daughter pairs indicate a genetic influence on bone health in the region of approximately 75% (Eisman, 1999). Furthermore, a number of specific gene polymorphisms have been linked to reduced bone mass (Ralston, 1999), with the interleukin 6-promoter gene being the most recently identified receptor to be associated with skeletal health (Ferrari *et al.* 2000; Zumda *et al.* 2000).

That said, the modifiable factors (in particular, exercise and nutrition) do have a critical role to play in the development and maintenance of bone strength. Physical activity of ‘weight-bearing’ type has been shown to be beneficial to skeletal preservation across the age range, but the exact type, intensity and duration that is of most benefit to the skeleton remains unclarified (Marcus, 1999). It is interesting to note that an apparent ‘threshold’ effect exists; excessive exercise, which results in amenorrhoea, is extremely detrimental to bone in the long-term, with evidence suggesting that such a deleterious impact is irreversible (New, 1998).

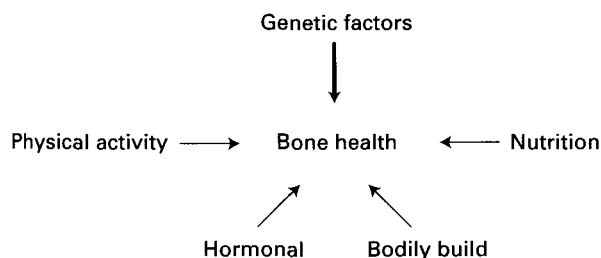


Fig. 4. Modifiable v. non-modifiable factors influencing bone health.

Importance of nutritional strategies for optimising bone health

Introductory remarks

Nutritional strategies for optimising bone health are important for a number of reasons: (1) nutrition is an exogenous factor and is thus amenable to change; (2) identification of the key ‘bone health nutrients’ has relevant public health implications; (3) a nutritional approach is far more popular with osteoporosis sufferers than drug intervention, a point of particular relevance given the poor long-term compliance rates associated with a number of currently available treatments (New, 1999).

Fundamentals of acid–base maintenance: criticality to health

‘Life is a struggle, not against sin, not against the money power, not against malicious animal magnetism, but against hydrogen ions’ (Mencken, 1919; cited by Kraut & Coburn, 1994). As noted by Kraut & Coburn (1994), these famous words by Mencken in the early 20th century about the meaning of life and death may also apply to the struggle of the healthy skeleton against the deleterious effects of retained acid.

Acid–base homeostasis is critical to health. The pH of extracellular fluid remains between 7.35 and 7.45 and it is a major challenge to the body’s balance to keep the H⁺ concentrations between 0.035 and 0.045 mmol/l (Green & Kleeman, 1991). Maintaining H⁺ within such narrow limits is essential to survival, and the body’s adaptive response involves three specific mechanisms: (1) buffer systems; (2) exhalation of CO₂; (3) kidney excretion.

On a daily basis, human subjects eat substances that both generate and consume protons, and as a net result adults on a normal Western diet generate approximately 1 mEq acid/d (Kurtz *et al.* 1983). The more acid precursors a diet contains, the greater the extent of systemic acidity (Bushinsky, 1998). Furthermore, as individuals age, the overall renal function declines, including the ability to excrete acid (Frassetto *et al.* 1996). Thus, with increasing age, human subjects become significantly (albeit slightly) more acidic (Frassetto & Sebastian, 1996).

A role for the skeleton in acid–base homeostasis: early work

Theoretical considerations of the role alkaline bone mineral may play in the defence against acidosis date back as far as the 1880s (Goto, 1918; Irving & Chute, 1933; Albright & Reifenstein, 1948). There are a number of studies providing evidence that in natural (e.g. starvation), pathological (e.g. diabetic acidosis) and experimental (e.g. NH₄Cl ingestion) states of acid loading and acidosis, an association exists with both hypercalciuria and negative Ca balance (Gastineau *et al.* 1960; Reidenberg *et al.* 1966). The pioneering work of Lemann (Lemann *et al.* 1966) and Barzel (1969) over three decades ago showed extensively the effects of ‘acid’ from the diet on bone mineral in both man and animals. Consideration of the skeleton as a source of buffer, contributing to both the preservation of the body’s pH and defence of the

system against acid–base disorders was a topic of much debate at the first ever Conference on Osteoporosis held in 1969 (Barzel, 1970; Bernstein *et al.* 1970).

In the 1960s Wachman & Bernstein (1968) put forward a hypothesis linking the daily diet to the development of osteoporosis, based on the role of bone in acid–base balance, and noted specifically that ‘the increased incidence of osteoporosis with age may represent, in part, the results of a lifelong utilisation of the buffering capacity of the basic salts of bone for the constant assault against pH homeostasis’ (Wachman & Bernstein 1968). The intake of ‘acid’ is a way of everyday life, and it is known that animal proteins and cereals are rich sources of H_3PO_4 and H_2SO_4 and are recognised as ‘acid-ash’ foods (Barzel & Massey, 1998; Heaney, 1998). The net production of acid is related to nutrition, and there is a gross quantitative relationship between the amount of acid produced (as reflected by urine pH) and the amount of acid-ash consumed in the diet. When one considers the extent of loss, if 2 mEq Ca/d is required to buffer about 1 mEq fixed acid/d, over 10 years (and assuming a total body Ca of approximately 1 kg), this requirement would account for a 15 % loss of inorganic bone mass in an average individual (Widdowson *et al.* 1951). Thus, consideration of a diet consisting of large quantities of fruit and vegetables (hence favouring ‘alkaline-ash’) may be important for bone health maintenance (Barzel, 1995).

Systemic acidosis and the skeleton: mechanisms of action?

Novel work by Arnett & Dempster (1986, 1990) and Arnett *et al.* (1994) demonstrated a direct enhancement of osteoclastic activity following a reduction in extracellular pH, an effect that was independent of parathyroid hormone (Fig. 5). Osteoclasts and osteoblasts appear to respond independently to small changes in pH in the culture media in which they are growing (Kreiger *et al.* 1992), and there is evidence that a small drop in pH, close to the physiological range, causes a tremendous burst in bone resorption (Arnett & Spowage, 1996; Bushinsky, 1996). Recent work by Arnett’s group (Mehji *et al.* 2001), has shown that metabolic acidosis

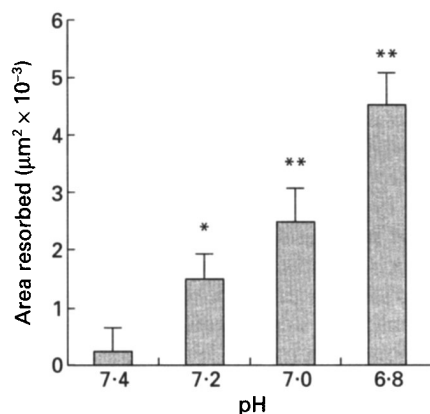


Fig. 5. Increase in osteoclastic activity with a reduction in extracellular pH. Mean values were significantly different from that at pH 7.4: * $P < 0.05$, ** $P < 0.01$. (From Arnett & Dempster, 1986.)

stimulates resorption by activating mature osteoclasts already present in calvarial bone rather than by inducing formation of new osteoclasts (Fig. 6 (a–d)). It is considered that almost all the bone mineral release that occurs in response to acidosis is due to osteoclast activation, which results in increased resorption pit formation in bone (with the organic matrix being destroyed at the same time; TR Arnett, personal communication), although there is evidence that excess H^+ directly induce physico-chemical Ca release from bone (Bushinsky *et al.* 1994).

Vegetarianism and skeletal health

Following the recognition of the role that bone plays in acid–base balance and the hypothesis linking diet to osteoporosis, it was proposed that long-term ingestion of vegetable-based diets may have a beneficial effect on bone mineral mass. The earlier studies (published before 1990) in general appeared to support the hypothesis, i.e. bone mineral mass was found to be higher in the vegetarian group compared with their omnivorous counterparts (Table 1; Ellis *et al.* 1972; Marsh *et al.* 1980, 1983, 1988; Tylavsky & Anderson, 1988; Hunt *et al.* 1989). However, there are two important points concerning this data which require specific attention: (1) there was a fundamental error in the interpretation of the photographic density measurements in the first paper published by Ellis *et al.* (1972; i.e. their conclusions should have been the opposite of what they claimed; Meema 1973, 1996; Ellis *et al.* 1974; Barzel, 1996); (2) subjects in several of the published studies were Seventh Day Adventists with a different lifestyle from that of the omnivorous group, which is likely to have been an important confounding influence (e.g. the Seventh Day Adventist group refrained from smoking and caffeine intake and physical levels were higher).

Studies published in the last decade suggest no differences in bone mineral density between vegetarians and omnivores (Lloyd *et al.* 1991; Tesar *et al.* 1992; Table 2). In a 5-year prospective study of changes in radial bone density of elderly white American women no differences were seen in bone loss rates between the lacto-ovo vegetarians and the omnivorous group (Reed *et al.* 1994). Furthermore, in the most recently published studies, bone mass was found to be significantly lower in the vegetable-based dietary groups (Chiu *et al.* 1997; Lau *et al.* 1998), although it is likely that protein ‘undernutrition’ may account for some of these differences (Rizzoli *et al.* 1998).

Very few studies have focused attention with regard to bone health on populations consuming a diet highly dependent on animal foods, particularly that of meat (Hammond & Storey, 1970). Mazess & Mather (1974) examined the bone mineral content of forearm bones in a sample (217 children, eighty-nine adults and 107 elderly) of Eskimo natives from the north coast of Alaska. After the age of 40 years, the Eskimos of both genders were found to have a deficit of bone mineral in the order of magnitude of between 10 and 15 % relative to white standards. An even greater ageing bone loss was found in Canadian Eskimos (Mazess & Mather, 1975a). The issue of ‘dietary change’ amongst the Eskimo population (particularly the utilisation of refined carbohydrates) was raised (Mann, 1975) and

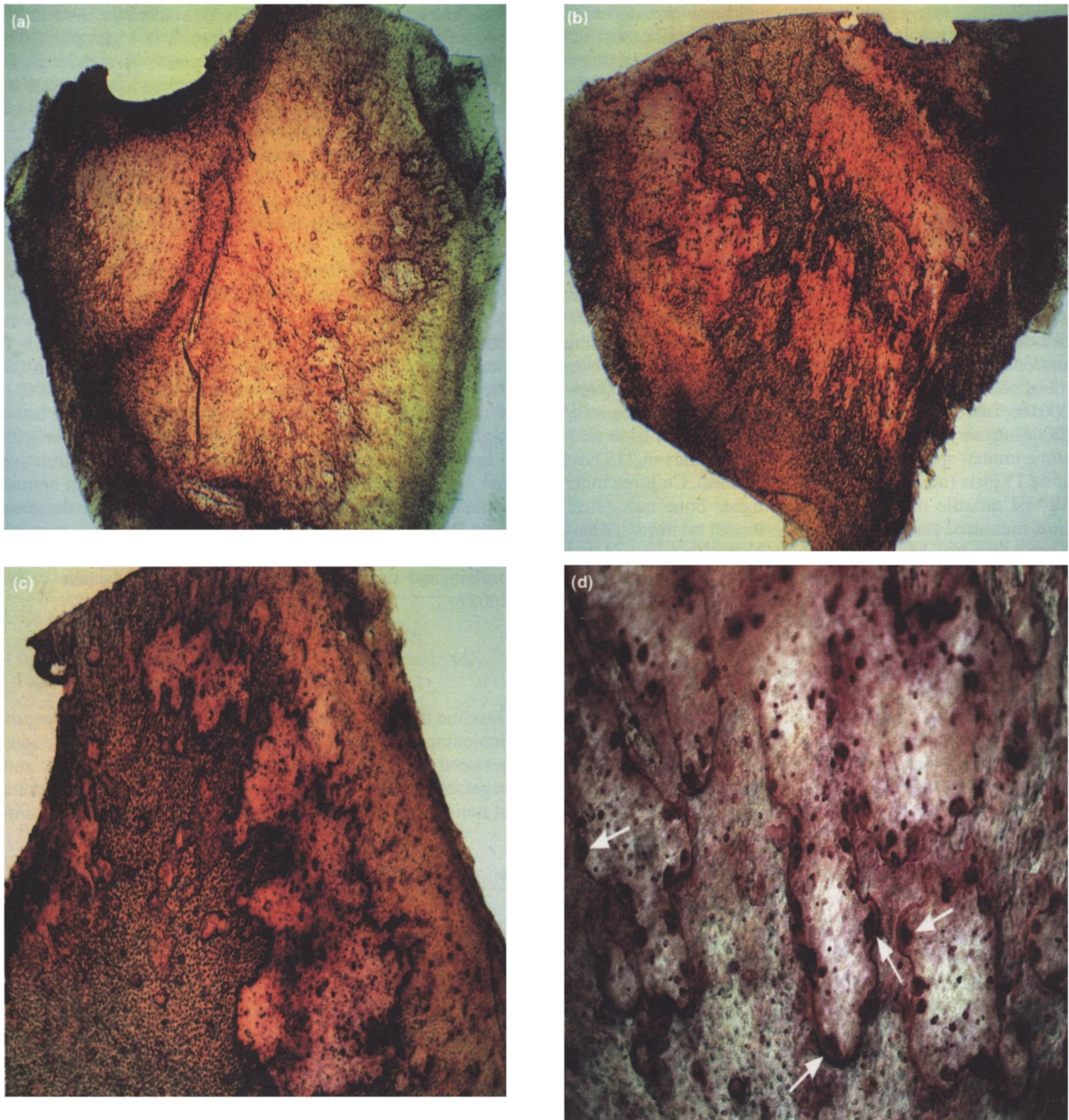


Fig. 6. Micrographs showing that metabolic acidosis stimulates resorption by activating mature osteoclasts already in mouse calvarial bone rather than by inducing formation of new osteoclasts. (a) tartrate resistant acid phosphatase-stained control bone, 3 d culture (pH 7.208) scale bar 500 μm , (b,c) resorption stimulated by bicarbonate acidosis (pH 7.01) scale bar 500 μm , (d) osteoclast activation by carbon dioxide acidosis at pH 6.8, scale bar 100 μm . (From Meghji *et al.* 2001; reproduced with kind permission of Dr T.R. Arnett.)

subsequently discussed (Mazess & Mather, 1975b). Clearly these findings are of considerable interest to the interaction between diet and bone in the regulation of systemic acid–base balance, and further work in this area is clearly warranted (New, 2001a).

Quantifying the acidity of foods: potential renal acid load

Of considerable interest is the finding that vegetable-based proteins generate a large amount of acid in the urine (Remer & Manz, 1994). Work by Remer & Manz (1995) examining the potential renal acid loads of a variety of foods has

indicated that many grain products and some cheeses have a high potential renal acid load (Table 3). These foods, which are likely to be consumed in large quantities in lacto-ovo vegetarians, may provide an explanation for the lack of a positive effect on bone health indices in studies comparing vegetarians v. omnivores (Buclin *et al.* 2001). The potentially deleterious effect of specific foods on the skeleton has been a topic of recent debate (Fox, 2001; New *et al.* 2002a).

Fruit and vegetable intake and bone health: findings from population-based studies

A number of population-based studies published in the last decade investigating the impact of diet on bone health, have demonstrated a beneficial effect of fruit and vegetable and/or K intake on axial and peripheral bone mass and bone metabolism in men and women across the age ranges (New, 2001b; Table 4). In the most recent study by Jones *et al.* (2001) urinary K was positively associated with bone mass at the lumbar spine, femoral neck and total body in 215 boys and 115 girls (mean age 8.1 (SD 0.33) years). Children in the highest quartile of urinary K had higher bone mass at all sites measured than children in the lowest quartile. Urinary K was found to be correlated with both K intake and fruit and vegetable consumption.

Several important papers were also presented at the recent 2001 American Society of Bone and Mineral Research conference. Chen *et al.* (2001) examined the association between diet and bone mineral density in a group of 668 early post-menopausal Chinese women. Results showed that higher intakes of fruit were positively associated with bone mineral density at all three bone mass sites measured, and fruit intake accounted for 1.7 and 1.4 % of changes in both bone mineral density and bone mineral content respectively at the whole-body level, with similar results found for

the spine and hip. Stone *et al.* (2001) studied the association between dietary intake and bone health in a group of 1075 elderly American men aged ≥ 65 years. K and lutein (a carotenoid found in dark-green vegetables) were found to be significantly associated with whole-body and hip bone mineral density. In a further study examining the association between diet and bone mass in American men aged 50–91 years Miller *et al.* (2001) noted that low dietary intakes of Mg (<300 mg/d) and K (<2.5 g/d) were found to be significantly associated with low femoral neck and radial bone mass.

Work recently published by Professor Anthony Sebastian's group examined the hypothesis that a high dietary animal protein:vegetable protein intake increases bone loss, and risk of fracture was investigated in a prospective cohort of 1035 women who participated in the Study of Osteoporotic Fractures (Sellmeyer *et al.* 2001). Women with a higher animal:vegetable protein intake had a higher rate of bone loss at the femoral neck than those with a low ratio, as well as a greater risk of hip fracture (relative risk 3.7). These findings suggest that a reduction in animal protein and an increase in vegetable protein may decrease bone loss and risk of hip fracture. Controversy remains concerning the relationship between animal v. vegetable protein and bone health (Heaney, 2001; Sebastian *et al.* 2001).

Aberdeen Prospective Osteoporosis Screening Study: baseline and longitudinal findings

Baseline findings of the Aberdeen Prospective Osteoporosis Screening Study (APOSS) have shown specific associations between nutrients found in abundance in fruit and vegetables and axial and peripheral bone mass and markers of bone resorption. In the first study of 994 women, those in

Table 1. Vegetarianism and bone health: summary of studies; earlier work (New, 2001b)

Reference	Findings	Summary
Ellis <i>et al.</i> (1972)	BMD \uparrow in vegetarian group	✓
Ellis <i>et al.</i> (1974)	BMD \downarrow in vegetarian group	x
Mazess & Mather (1974)	BMC \downarrow in North Alaskan Eskimos	✓
Mazess & Mather (1975a)	BMC \downarrow in Canadian Eskimos	✓
Marsh <i>et al.</i> (1980)	Bone loss \uparrow in omnivores	✓
Marsh <i>et al.</i> (1983)	BMD \uparrow in vegetarians	✓
Marsh <i>et al.</i> (1988)	BMD \uparrow in elderly vegetarians	✓
Tylavsky <i>et al.</i> (1988)	No difference in BMD between groups	–
Hunt <i>et al.</i> (1989)	No difference in BMD between groups	–

BMD, bone mineral density; BMC, bone mineral content; \uparrow , higher; \downarrow , lower; ✓, positive association; x, negative association.

Table 2. Vegetarianism and bone health: summary of studies; later work (New, 2001b)

Reference	Findings	Summary
Lloyd <i>et al.</i> (1991)	No difference in BMD between groups	–
Tesar <i>et al.</i> (1992)	No difference in BMD between groups	–
Reed <i>et al.</i> (1994)	Bone loss rates similar	–
Chiu <i>et al.</i> (1997)	BMD \downarrow in vegan group	x
Lau <i>et al.</i> (1998)	Hip BMD lower in vegetarian group	x

BMD, bone mineral density; \downarrow , lower; x, negative association.

the lowest quartile of intake of K, Mg, fibre, vitamin C and β -carotene had significantly lower lumbar spine and femoral neck bone mineral densities, findings which were independent of important confounding factors ($P < 0.01$ for K in both cases; New *et al.* 1997; Fig. 7). In a second study (n 62) women with low intakes of these same nutrients were found to have lower forearm bone mass and higher bone resorption (New *et al.* 2000; Fig. 8), findings which were again independent of important confounding factors. With financial assistance, initially from the Department of Health and MRC and more recently from the Food Standards Agency (formerly Ministry of Agriculture, Fisheries and Food), APOSS longitudinal data now make up the largest nutrition, genetic and bone health dataset currently available worldwide, involving approximately 4000 women. Preliminary analysis indicates a positive influence of alkaline-forming foods on post-menopausal bone loss and bone turnover markers (Macdonald *et al.* 2001a, 2002a,b). Further exploration of the data will enable determination of

potential relationships between nutrient-gene interactions and bone health, with a specific focus on the role of the skeleton in acid-base maintenance.

Potassium bicarbonate administration and bone: clinical applications

The clinical application of the effect of normal endogenous acid production on bone is of considerable interest, with extensive work in this area by Lemann (at the subject level; (Lemann *et al.* 1967, 1979, 1986, 1989, 1991) and Bushinsky (at the cellular level; (Bushinsky *et al.* 1983, 1993, 1994, 1997; Bushinsky & Sessler, 1992; Bushinsky, 1997). Sebastian *et al.* (1994) demonstrated that KHCO_3 administration resulted in a decrease in urinary Ca and P, with overall Ca balance becoming less negative (or more positive). Changes were also seen in markers of bone metabolism, with a reduction in urinary excretion of hydroxyproline (bone resorption) and an increased excretion of

Table 3. Potential renal acid load (PRAL) values of a variety of foods and food groups (Remer & Manz, 1995)

Food or food group	PRAL mEq/100 g edible portion	Food or food group	PRAL mEq/100 g edible portion
Fruits and fruit juices:		Milk, dairy products and eggs:	
Apples	-2.2	Milk (whole, pasteurised)	0.7
Bananas	-5.5	Yoghurt (whole milk, plain)	1.5
Raisins	-21.0	Cheddar cheese (reduced fat)	26.4
Grape juice	-1.0	Cottage cheese	8.7
Lemon juice	-2.5	Eggs (yolk)	23.4
Vegetables:		Meat, meat products and fish:	
Spinach	-14.0	Beef (lean only)	7.8
Broccoli	-1.2	Chicken (meat only)	8.7
Carrots	-4.9	Pork (lean only)	7.9
Potatoes	-4.0	Liver sausage	10.6
Onions	-1.5	Cod (fillets)	7.1
Grain products:		Beverages:	
Bread (white wheat)	3.7	Coca Cola	0.4
Oat flakes	10.7	Coffee (infusion)	-1.4
Rice (brown)	12.5	Tea (Indian infusion)	-0.3
Spaghetti (white)	6.5	White wine	-1.2
Cornflakes	6.0	Red wine	-2.4

Table 4. Impact of fruit and vegetables on bone: a review of population-based studies showing a positive link

Reference	Details	Findings
Eaton-Evans <i>et al.</i> (1993)	Seventy-seven females, 46–56 years	✓ Vegetables
Michaelsson <i>et al.</i> (1995)	175 females, 28–74 years	✓ K intake
New <i>et al.</i> (1997)	994 females, 45–49 years	✓ K, Mg, fibre, vitamin C
		✓ Past intake: fruit and vegetables
Tucker <i>et al.</i> (1999)	229 males, 349 females, 75 years	✓ K, Mg, fruit and vegetables
New <i>et al.</i> (2000)	Sixty-two females, 45–54 years	✓ K, Mg, fibre, vitamin C
		✓ Past intake: fruit and vegetables
Jones <i>et al.</i> (2001)	215 boys, 115 girls, 8–14 years	✓ K, urinary K
Chen <i>et al.</i> (2001)	668 females, 48–62 years	✓ Fruit
Miller <i>et al.</i> (2001)	300 males, 50–91 years	✓ K, Mg
Stone <i>et al.</i> (2001)	1075 men, ≥ 65 years	✓ K, lutein
New <i>et al.</i> (2002b)	164 females, 55–87 years	✓ K, fruit and vegetables

✓, positive association.

serum osteocalcin (bone formation). Concern has been raised that the level of protein consumed by the women in the study was higher than is typical of American women in this age-group, and there has been a call for further studies to be undertaken with dietary protein being consumed at a more reasonable level (Wood, 1994). However, the study by Sebastian's group (Sebastian *et al.* 1994) is of major clinical importance and may have valued implications for the prevention and treatment of post-menopausal osteoporosis (Morris, 2001). Whilst long-term studies are of course required, administration of alkali may provide women with an alternative therapy for ageing bone loss (Sebastian *et al.* 1990; Kraut & Coburn, 1994).

Net endogenous acid production and the skeleton

Determination of the acid–base content of diets consumed by individuals and population groups is a useful way forward in relation to the role of the skeleton in acid–base homeostasis. Since 24 h urine collections (considered as the gold standard for acid–base research) are entirely inappropriate for population-based studies, an alternative is to examine the net acid content of the diet. Sebastian's group (Frassetto *et al.* 1998) has found that the protein:K value predicts net acid excretion and, in turn, net renal acid excretion predicts Ca excretion. They propose a simple algorithm to determine the net rate of endogenous non-carbonic acid production from considerations of the acidifying effect of protein and the alkalisating effect of K.

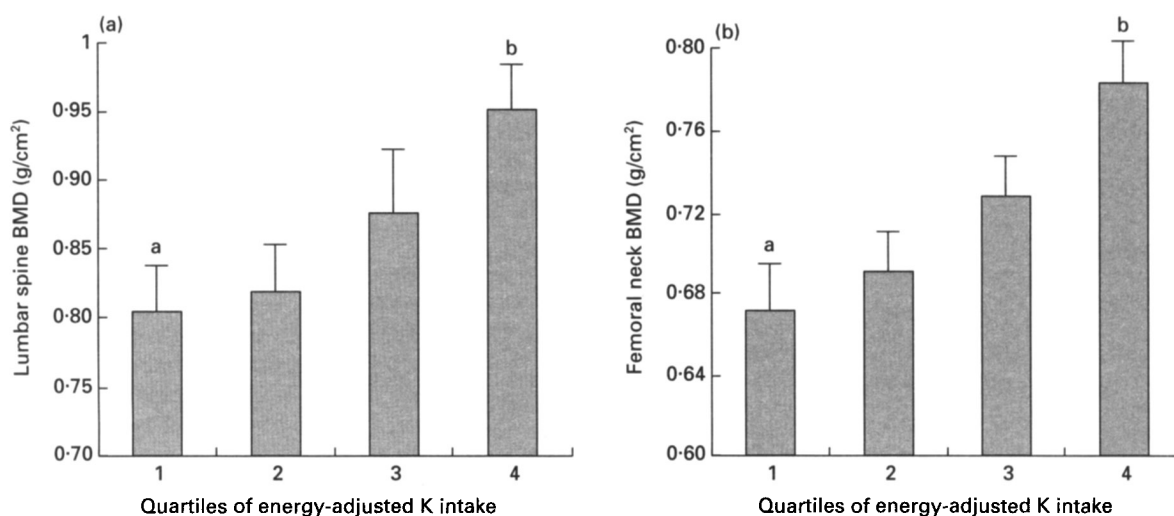


Fig. 7. Fruit and vegetable intake and bone mineral density (BMD) in women (n 994); evidence of a positive link? Baseline values are shown for (a) lumbar spine BMD and (b) femoral neck BMD from study 1 of the Aberdeen Prospective Osteoporosis Screening Study. Values are means with their standard errors represented by vertical bars.^{a,b} Mean values with unlike superscript letters were significantly different ($P < 0.01$). (From New *et al.* 1997.)

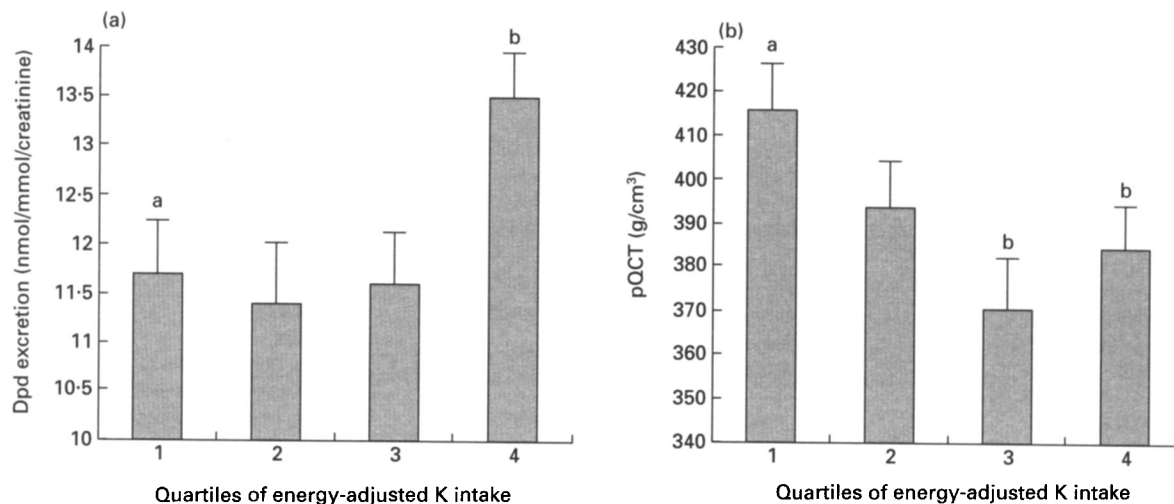


Fig. 8. Fruit and vegetable intake and bone metabolism in women (n 62); evidence of a positive link? Baseline values are shown for (a) deoxy pyridinoline (Dpd) excretion and (b) peripheral quantitative computed tomography (pQCT) data from study 2 of the Aberdeen Prospective Osteoporosis Screening Study. Values are means with their standard errors represented by vertical bars.^{a,b} Mean values with unlike superscript letters were significantly different ($P < 0.01$). (From New *et al.* 2000.)

To examine this theory further, net endogenous acid production from the baseline data of APOSS was calculated. Women with the lowest net endogenous acid production were found to have a higher lumbar spine bone mineral density (Fig. 9) and significantly lower urinary pyridinium cross-link excretion (pyridinoline ($P < 0.004$) and deoxy-pyridinoline ($P < 0.02$); Fig. 10; New *et al.* 2001c). Furthermore, preliminary analyses of the APOSS longitudinal dataset indicate significantly higher net endogenous acid production in women who had suffered any fracture compared with those in the non-fracture group ($P < 0.03$; HM Macdonald, SA New, DA Grubb, MHN Golden and DM Reid, unpublished results; Fig. 11).

Findings of the Dietary Approaches to Stopping Hypertension I and II fruit and vegetable intervention trials: implications for bone health

Further support for a positive link between fruit and vegetable intake and bone health can be found in the results of the Dietary Approaches to Stopping Hypertension (DASH) I and II intervention trials. In DASH I diets rich in fruit and vegetables were associated with a significant fall in blood pressure compared with baseline measurements (Appel *et al.* 1997). However, of particular interest to the bone field were findings that increasing fruit and vegetable intake from 3.6 to 9.5 daily servings decreased the urinary Ca excretion from 157 mg/d to 110 mg/d (Appel *et al.* 1997). The authors suggested this difference was due to the high fibre content of the diet possibly impeding Ca absorption. However, a more likely explanation, put forward by Barzel (1997), was a reduction in the 'acid load' with the fruit and vegetable diet compared with the control diet. This study is the first population-based fruit and vegetable intervention trial showing a positive effect on Ca economy (albeit a secondary finding).

More recently, Lin *et al.* (2001) have reported the findings of the DASH II (DASH-Sodium) trial. The impact of two dietary patterns on indices of bone metabolism were examined. The DASH diet emphasises fruits, vegetables and low-fat dairy products, and is reduced in red meats, and in this second DASH II trial three levels of Na intake were investigated (50, 100 and 150 mmol/l). Subjects consumed the control diet at the 150 mmol Na intake/d level for 2 weeks and were then randomly assigned to eat either the DASH diet or the control diet at all three Na levels for a further 4 weeks in random order. The DASH diet, compared with the control diet, was found to significantly reduce both bone formation (by measurement of the marker osteocalcin) and bone resorption (by measurement of the marker C-terminal propeptide). Interestingly, Na intake did not significantly affect the markers of bone metabolism. DASH II is an important intervention study that shows a clear benefit of the high intake of fruit and vegetables on markers of bone metabolism. Research is now required to determine the long-term clinical impact of the DASH diet on bone health and fracture risk, as well as clarification of the exact mechanisms involved with respect to this diet on skeletal protection.

Nutrient-gene interactions and buffering the capacity of bone

The identification of a link between specific gene polymorphisms and bone health lends support to the suggestion that public health strategies should target dietary advice at those women with a genetic predisposition to osteoporosis. Evidence indicates that Ca absorption is dependent on vitamin D receptor genotype in older women (Dawson-Hughes *et al.* 1995). Recent data from APOSS longitudinal suggests that Ca intake is a determinant of bone mineral density in women with the 'bb' vitamin D receptor genotype

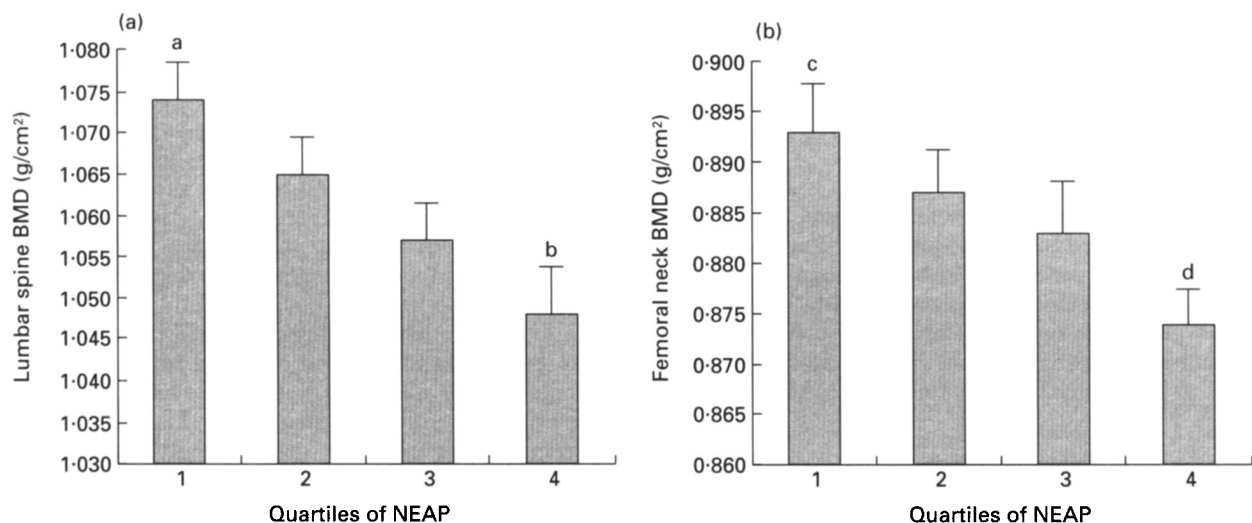


Fig. 9. Association between non-endogenous acid production (NEAP; protein: potassium intake) and bone mass (bone mineral density; BMD) in 994 women participating in study 1 of the Aberdeen Prospective Osteoporosis Screening Study. Values are means with their standard errors represented by vertical bars. ^{a,b,c,d} Mean values with unlike superscript letters were significantly different: ^{a,b} $P < 0.04$; ^{c,d} $P < 0.08$. (From New *et al.* 2001.)

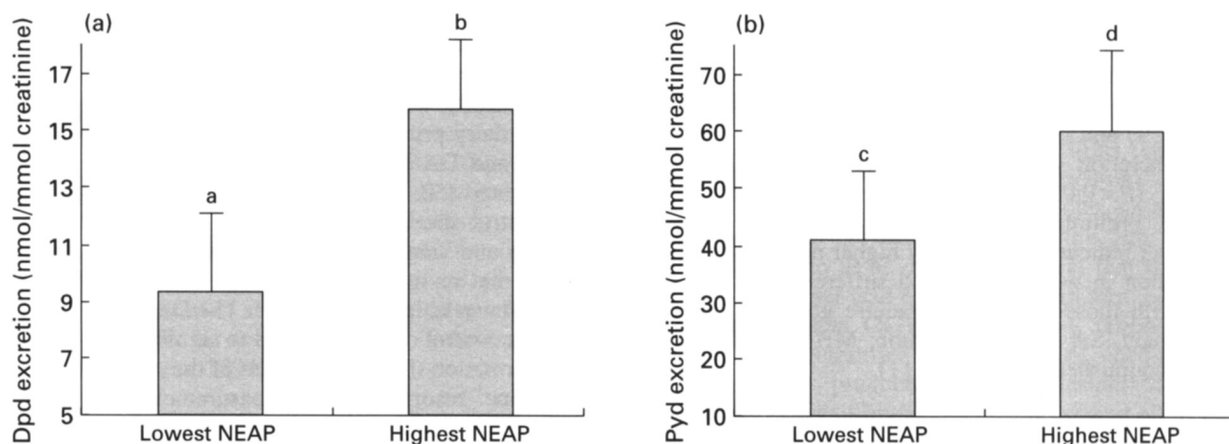


Fig. 10. Association between non-endogenous acid production (NEAP; protein: potassium intake) and bone resorption (deoxypyridinoline (Dpd; a) and pyridinoline (Pyd; b) excretion) in 62 women participating in study 2 of the Aberdeen Prospective Osteoporosis Screening Study. Values are means with their standard errors represented by vertical bars. ^{a,b,c,d} Mean values with unlike superscript letters were significantly different: ^{a,b} $P < 0.02$; ^{c,d} $P < 0.004$. (From New *et al.* 2001.)

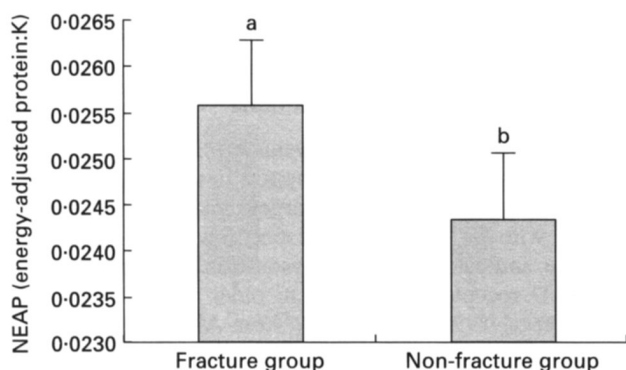


Fig. 11. Non-endogenous acid production (NEAP; protein: potassium intake) in fracture and non-fracture groups of women. Preliminary findings from the Aberdeen Prospective Osteoporosis Screening study. Values are means with their standard errors represented by vertical bars. ^{a,b} Mean values with unlike superscript letters were significantly different ($P < 0.03$). (From HM Macdonald, SA New, DA Grubb, MHN Golden and DM Reid, unpublished results.) (Reproduced with kind permission of Dr HM Macdonald.)

and who are not taking exogenous oestrogen (Macdonald *et al.* 2000), and modest alcohol intake (1–2 units per d) is associated with reduced bone loss in women with the p' allele of the oestrogen receptor genotype (Macdonald *et al.* 2001b). Whether the buffering capacity of bone is susceptible to nutrient–gene interactions remains unknown and is certainly an area which warrants further research.

Future directions

It is widely believed that the diet of 'modern man' is vastly different from that which early man once consumed (Eaton & Konner, 1985). Considerations of the dietary content of pre-agricultural man estimate intakes of Na to be 600 mg/d and those of K to be at levels reaching 7000 mg/d. These

data are in stark contrast to published dietary data that estimate population intakes of Na and K at levels of approximately 4000 and 2500 mg/d respectively in the UK, USA and Australia (Gregory *et al.* 1990; Patterson *et al.* 1990). As noted by Eaton *et al.* (1996), our kidneys are designed to excrete more K than Na, because K was plentiful in the diet. This evolutionary mechanism still exists, despite the almost total dietary reversal of consuming more Na than K; hence the term 'today's diet, yesterday's genes' is most fitting.

The evidence currently available from experimental, clinical and observational studies suggests a role for the skeleton in acid–base homeostasis, with confirmation of these findings being seen in the animal model (Muhlaur & Li, 1999). Future research should focus attention on a number of areas: (1) there is an urgent requirement for intervention trials centred specifically on fruit and vegetables as the supplementation vehicle and assessing a wide range of bone health indices, including fracture risk; (2) experimental studies would be useful to determine whether there are other aspects of fruit and vegetables which are beneficial to bone metabolism, including key micronutrient intake and phytoestrogens; (3) the relationship between net endogenous acid production and skeletal integrity needs to be further defined and, in particular, whether high protein intakes are detrimental to the skeleton in the absence of alkali-forming foods. Conversely, the role of protein in bone health needs to be quantified more fully and, in particular, the interaction between dietary protein intake and insulin-like growth factor I, which is known to have osteotropic properties; (4) there is a need for re-analysis of existing dietary–bone mass and metabolism datasets to look in particular at the impact of 'dietary acidity' on the skeleton.

Should the findings of these research areas prove conclusive, a 'fruit and vegetable' approach to bone health development and maintenance may provide a very sensible (and natural) alternative therapy for osteoporosis treatment, which is likely to have numerous additional health-related benefits. The road ahead is an exciting one!

Acknowledgements

My success in being awarded the 2001 Nutrition Society Medal is most timely, as exactly a decade has passed since I won the 1991 UK Nutritional Consultative Panel (NCP) PhD Scholarship. During the last 10 years I have been helped and guided by many people on a variety of aspects. These acknowledgements are therefore not a list of the formalities usually associated with an Award, but a genuine expression of my sincere thanks to all those individuals.

Thus, I acknowledge Professor David M. Reid FRCP, my principal PhD supervisor and Director of APOSS, whose dedication to the field of osteoporosis and capacity for hard work shall always be an inspiration to me; Dr Simon P. Robins DSc, for giving me the opportunity to work in his laboratory and experience the fascinating research into bone metabolism markers which he pioneered; Dr Caroline Bolton-Smith and Dr Geraldine McNeill for their help and guidance as my two other PhD supervisors; the NCP Scientific Panel, and in particular Professor Ian Macdonald DSc, Dr Roger Whitehead CBE, Professor Colin Mills DSc and Dr Judy Buttriss, for investing their faith (and monies) by awarding me the 1991 PhD Scholarship; the Department of Health/MRC and more recently the Food Standards Agency for their financial support of APOSS longitudinal; Mr David A. Grubb, to whom I shall always be indebted for his tremendous help with the Aberdeen food-frequency questionnaire; Dr Helen M. Macdonald who has worked tirelessly on APOSS longitudinal; my mentors in Aberdeen: Professor Peter Aggett OBE, Dr Clare Casey and Professor Philip W. T. James CBE, thank you for believing I could do it; Professor D. Joe Millward DSc, for teaching me the importance of the 'scientific bottom line' and for steering such a pleasant ship at the University of Surrey; senior colleagues at the University of Surrey: Dr Jacki A. Bishop, Dr Jane B. Morgan, Dr Linda Morgan, Dr Margaret Murphy and Dr Margaret Lumbers for their collaboration; my staff Dr Janet Catterick and Ms Jaana Nurmi from the University of Surrey and Mrs Sawsan Khoja from the King Abdulaziz University, Jeddah, Saudi Arabia for their hard work; friends and colleagues at the Osteoporosis Research Unit, University of Aberdeen, and in particular Mrs Morag Orr, Mrs Aileen McPherson and Miss Elaine Rennie; my other colleagues in Aberdeen, Professor Michael H. N. Golden, Mr Sandy Duncan, Mrs Phyllis Nicol and Mrs Marian Campbell, as well as Dr David J. Torgerson, University of York; Dr Ann Walker for keeping me on the road to good health; the National Osteoporosis Society, under the directorship of Mrs Linda Edwards, for providing such a sound infrastructure whereby osteoporosis sufferers and scientific researchers alike can interact; to my international colleagues in the field of metabolic bone disease who are great supporters of my work: Professor Bess Dawson-Hughes (USA); Professor Anthony Sebastian (USA); Professor Robert P. Heaney (USA); Professor Peter Burckhardt (Switzerland); Professor Rene Rizzoli (Switzerland); Professor Jean-Philip Bonjour (Switzerland); Dr Tim R. Arnett (UK); Professor Uriel S. Barzel (USA). Finally to my support team: my father, Mr Victor Guy Lanham, who has helped and guided me throughout every stage of my career

and my mother, Mrs Lily Margaret Lanham, who has inspired me with her tremendous knowledge of diet and health and in her belief that 'you are what you eat'; my husband, William John, who has been there for me every step of the way and who together with our son, Christian Stephen, are my spirits of life.

References

- Albright F & Reifenstein EC Jr (1948) *The Parathyroid Glands and Metabolic Bone Disease*, pp. 241–247. Baltimore, MD: Williams and Wilkins.
- Appel LJ, Moore TJ, Obarzanek E, Vallmer WM, Svetkey LP, Sacks FM, Bray GA, Vogt TM & Cutler JA (1997) A clinical trial of the effects of dietary patterns on blood pressure. *New England Journal of Medicine* **336**, 1117–1124.
- Arnett TR, Boyde A, Jones SL & Taylor ML (1994) Effects of medium acidification by alteration of carbon dioxide or bicarbonate concentrations on the resorptive activity of rat osteoclasts. *Journal of Bone and Mineral Research* **9**, 375–379.
- Arnett TR & Dempster DW (1986) Effect of pH on bone resorption by rat osteoclasts in vitro. *Endocrinology* **119**, 119–124.
- Arnett TR & Dempster DW (1990) Perspectives: protons and osteoclasts. *Journal of Bone and Mineral Research* **5**, 1099–1103.
- Arnett TR & Spowage M (1996) Modulation of the resorptive activity of rat osteoclasts by small changes in extracellular pH near the physiological range. *Bone* **18**, 277–279.
- Barzel US (1969) The effect of excessive acid feeding on bone. *Calcified Tissue Research* **4**, 94–100.
- Barzel US (editor) (1970) The role of bone in acid-base metabolism. In *Osteoporosis*, pp. 199–206. New York: Grune & Stratton.
- Barzel US (1995) The skeleton as an ion exchange system: implications for the role of acid-base imbalance in the genesis of osteoporosis. *Journal of Bone and Mineral Research* **10**, 1431–1436.
- Barzel US (1996) Ne'ertheless, an acidogenic diet may impair bone (letter). *Journal of Bone and Mineral Research* **11**, 704.
- Barzel US (1997) Dietary patterns and blood pressure (letter). *New England Journal of Medicine* **337**, 637.
- Barzel US & Massey LK (1998) Excess dietary protein can adversely affect bone. *Journal of Nutrition* **128**, 1051–1053.
- Bernstein DS, Wachman A & Hattner RS (1970) Acid-base balance in metabolic bone disease. In *Osteoporosis*, pp. 207–216 [US Barzel, editor]. New York: Grune & Stratton.
- Buclin T, Cosma M, Appenzeller M, Jacquet AF, Decosterd LA, Biollaz J & Burckhardt P (2001) Diet acids and alkalis influence calcium retention on bone. *Osteoporosis International* **12**, 493–499.
- Bushinsky DA (1996) Metabolic alkalosis decreases bone calcium efflux by suppressing osteoclasts and stimulating osteoblasts. *American Journal of Physiology* **271**, F216–F222.
- Bushinsky DA (1997) Decreased potassium stimulates bone resorption. *American Journal of Physiology* **272**, F774–F780.
- Bushinsky DA (1998) Acid-base imbalance and the skeleton. In *Nutritional Aspects of Osteoporosis '97, Proceedings of the 3rd International Symposium on Nutritional Aspects of Osteoporosis, Switzerland, 1997. Challenges of Modern Medicine*, pp. 208–217 [P Burckhardt, B Dawson-Hughes and RP Heaney, editors]. Italy: Ares-Serono Symposia Publications.
- Bushinsky DA, Gavrillov K, Chabala JM & Levi-Setti R (1997) Metabolic acidosis decreases potassium content of bone. *Journal of the American Society of Nephrology* **7**, 1787.

- Bushinsky DA, Kreiger NS, Geisser DI, Grossman EB & Coe FL (1983) Effects of bone calcium and proton fluxes in vitro. *American Journal of Physiology* **245**, F204–F209.
- Bushinsky DA, Lam BC, Nespeca R, Sessler NE & Grynepas MD (1993) Decreased bone carbonate content in response to metabolic, but not respiratory, acidosis. *American Journal of Physiology* **265**, F530–F536.
- Bushinsky DA & Sessler NE (1992) Critical role of bicarbonate in calcium release from bone. *American Journal of Physiology* **263**, F510–F515.
- Bushinsky DA, Sessler NE, Glens RE & Featherstone JDB (1994) Proton-induced physicochemical calcium release from ceramic apatite disks. *Journal of Bone and Mineral Research* **9**, 213–220.
- Chen Y, Ho SC, Lee R, Lam S & Woo J (2001) Fruit intake is associated with better bone mass among Hong Kong Chinese early postmenopausal women. *Journal of Bone and Mineral Research* **16**, Suppl. 1, S386.
- Chiu JF, Lan SJ, Yang CY, Wang PW, Yao WJ, Su LH & Hsieh CC (1997) Long term vegetarian diet and bone mineral density in postmenopausal Taiwanese women. *Calcified Tissue International* **60**, 245–249.
- Cummings SR, Nevitt MC, Browner WS, Stone K, Fox KM & Ensrud KE (1995) Risk factors for hip fracture in white women. *New England Journal of Medicine* **332**, 767–773.
- Dawson-Hughes B, Harris SS & Finneran S (1995) Calcium absorption on high and low Ca intakes in relation to vitamin D receptor genotype. *Journal of Clinical Endocrinology and Metabolism* **80**, 3657–3661.
- Department of Health (1998) *Nutrition and Bone Health: With Particular References to Calcium and Vitamin D. Report on Health and Social Subjects no. 49*. London: The Stationery Office.
- Eaton BS, Eaton BS III, Konner MJ & Shostak M (1996) An evolutionary perspective enhances understanding of human nutritional requirements. *Journal of Nutrition* **126**, 1732–1740.
- Eaton BS & Konner M (1985) Paleolithic nutrition. A consideration of its nature and current implications. *New England Journal of Medicine* **312**, 283–290.
- Eaton-Evans J, McIlrath EM, Jackson WE, Bradley P & Strain JJ (1993) Dietary factors and vertebral bone density in perimenopausal women from a general medical practice in Northern Ireland. *Proceedings of the Nutrition Society* **52**, 44A.
- Eisman JA (1999) Genetics of osteoporosis. *Endocrine Reviews* **20**, 788–804.
- Ellis FR, Holesh S & Ellis JW (1972) Incidence of osteoporosis in vegetarians and omnivores. *American Journal of Clinical Nutrition* **25**, 555–558.
- Ellis FR, Holesh S & Sanders TA (1974) Osteoporosis in British vegetarians and omnivores. *American Journal of Clinical Nutrition* **27**, 769–770.
- Ferrari SL, Garner P, Ahn-Luong LE, Montgomery H, Humphries S & Greenspan S (2000) Functional polymorphic variant in the IL-6 gene promoter associated with low bone resorption in postmenopausal women. *Osteoporosis International* **11**, S147.
- Food and Nutrition Board of the Institute of Medicine (1997) *Dietary Reference Intakes: Calcium, Phosphorus, Magnesium, Vitamin D and Fluoride*. Washington, DC: National Academy Press.
- Fox D (2001) Hard cheese. *New Scientist* 15 December issue, 42–45.
- Frassetto LA, Morris RC Jr & Sebastian A (1996) Effect of age on blood acid–base composition in adult humans: role of age-related renal functional decline. *American Journal of Physiology* **271**, F1114–F1122.
- Frassetto LA & Sebastian A (1996) Age and systemic acid–base equilibrium: analysis of published data. *Journal of Gerontology* **51A**, B91–B99.
- Frassetto LA, Todd K, Morris RC Jr & Sebastian A (1998) Estimation of net endogenous noncarbonic acid production in humans from dietary protein and potassium contents. *American Journal of Clinical Nutrition* **68**, 576–583.
- Gastineau CF, Power MH & Rosevear JW (1960) Metabolic studies of a patient with osteoporosis and diabetes mellitus: effects of testosterone enanthate and strontium lactate. *Proceedings of the Mayo Clinic* **35**, 105–111.
- Goto K (1918) Mineral metabolism in experimental acidosis. *Journal of Biological Chemistry* **36**, 355–376.
- Green J & Kleeman R (1991) Role of bone in regulation of systematic acid–base balance (editorial review). *Kidney International* **39**, 9–26.
- Gregory J, Foster K, Tyler H & Wiseman M (1990) *The Dietary and Nutritional Survey of British Adults*. London: H.M. Stationery Office.
- Hammond RH & Storey E (1970) Measurement of growth and resorption of bone in rats fed meat diet. *Calcified Tissue Research* **4**, 291.
- Heaney RP (1998) Excess dietary protein may not adversely affect bone. *Journal of Nutrition* **128**, 1054–1057.
- Heaney RP, Abrams S, Dawson-Hughes B, Looker A, Marcus R, Matkovic V & Weaver C (2000) Peak bone mass. *Osteoporosis International* **11**, 985–1009.
- Heaney RP (2001b) Protein intake and bone health: the influence of belief systems on the conduct of nutritional science (editorial). *American Journal of Clinical Nutrition* **73**, 3–4.
- Hunt IF, Murphy NJ, Henderson C, Clark VA, Jacobs RM, Johnston PK & Coulson AH (1989) Bone mineral content in postmenopausal women: comparison of omnivores and vegetarians. *American Journal of Clinical Nutrition* **50**, 517–523.
- Irving L & Chute AL (1933) The participation of the carbonates of bone in the neutralisation of ingested acid. *Journal of Cellular Physiology* **2**, 157.
- Jones G, Riley MD & Whiting S (2001) Association between urinary potassium, urinary sodium, current diet, and bone density in prepubertal children. *American Journal of Clinical Nutrition* **73**, 839–844.
- Kraut JA & Coburn JW (1994) Bone, acid and osteoporosis. *New England Journal of Medicine* **330**, 1821–1822.
- Kreiger NA, Sessler NE & Bushinsky DA (1992) Acidosis inhibits osteoblastic and stimulates osteoclastic activity in vitro. *American Journal of Physiology* **262**, F442–F448.
- Kurtz I, Maher T, Hulter HN, Schambelan M & Sebastian A (1983) Effect of diet on plasma acid–base composition in normal humans. *Kidney International* **24**, 670–680.
- Lau EM, Kwok T, Woo J & Ho SC (1998) Bone mineral density in Chinese elderly female vegetarians, vegans, lactoovo-vegetarians and omnivores. *European Journal of Clinical Nutrition* **52**, 60–64.
- Lemann J Jr, Adams ND & Gray RW (1979) Urinary calcium excretion in humans. *New England Journal of Medicine* **301**, 535–541.
- Lemann J Jr, Gray RW, Maierhofer WJ & Cheung HS (1986) The importance of renal net acid excretion as a determinant of fasting urinary calcium excretion. *Kidney International* **29**, 743–746.
- Lemann J Jr, Gray RW & Pleuss JA (1989) Potassium bicarbonate, but not sodium bicarbonate, reduces urinary calcium excretion and improves calcium balance in healthy men. *Kidney International* **35**, 688–695.
- Lemann J Jr, Litzow JR & Lennon EJ (1966) The effects of chronic acid load in normal man: Further evidence for the participation of bone mineral in the defence against chronic metabolic acidosis. *Journal of Clinical Investigation* **45**, 1608–1614.

- Lemann J Jr, Litzow JR & Lennon EJ (1967) Studies of the mechanisms by which chronic metabolic acidosis augments urinary calcium excretion in man. *Journal of Clinical Investigations* **46**, 1318–1328.
- Lemann J Jr, Pleuss JA, Gray RW & Hoffmann RG (1991) Potassium administration increases and potassium deprivation reduces urinary calcium excretion in healthy adults. *Kidney International* **39**, 973–983.
- Lin P, Ginty F, Appel L, Svetky L, Bohannon A, Barclay D, Gannon R & Aickin M (2001) Impact of sodium intake and dietary patterns on biochemical markers of bone and calcium metabolism. *Journal of Bone and Mineral Research* **16**, Suppl. 1 S511.
- Lloyd T, Schaeffer JM, Walker MA & Demers LM (1991) Urinary hormonal concentrations and spinal bone densities of premenopausal vegetarian and nonvegetarian women. *American Journal of Clinical Nutrition* **54**, 1005–1010.
- Macdonald HM, New SA, Fraser WD, Black AJ, Grubb DA & Reid DM (2002b) Increased fruit and vegetable intake reduces bone turnover in early postmenopausal Scottish women. *Osteoporosis International* (In the Press).
- Macdonald HM, New SA, Grubb DA, Golden MHN & Reid DM (2001a) Impact of food groups on perimenopausal bone loss. In: *Nutritional Aspects of Osteoporosis 2000. 4th International Symposium on Nutritional Aspects of Osteoporosis, Switzerland, 2000. Challenges of Modern Medicine* pp. 399–408 [P Burckhardt, B Dawson-Hughes and RP Heaney, editors]. Italy: Ares-Serono Symposia Publications, Academic Press.
- Macdonald HM, New SA, Grubb DA & Reid DM (2002a) Higher intakes of fruit and vegetables are associated with higher bone mass in perimenopausal Scottish women. *Proceedings of the Nutrition Society* **61**. (In the Press).
- Macdonald HM, New SA, McGuigan FE, Golden MHN, Ralston SH, Grubb DA & Reid DM (2000) Femoral neck bone loss and dietary Ca intake in peri and early post-menopausal women: an association dependent on VDR genotype. *Journal of Bone and Mineral Research* **15**, S202.
- Macdonald HM, New SA, McGuigan FE, Golden MHN, Ralston SH, Grubb DA & Reid DM (2001b) Modest alcohol intake reduces bone loss in peri and early postmenopausal Scottish women: an effect depend on estrogen receptor genotype? *Bone* **28**, S95.
- Mann G (1975) Bone mineral content of North Alaskan Eskimos (letter). *American Journal of Clinical Nutrition* **28**, 566–567.
- Marcus R (1999) Physical activity and regulation of bone mass. *Primer on the Metabolic Bone Diseases and Disorders of Mineral Metabolism*, 4th ed., pp. 262–264. London: Lippincott, Williams & Wilkins.
- Marsh AG, Sanchez TV, Chaffee FL, Mayor GH & Mickelsen O (1983) Bone mineral mass in adult lactoovo vegetarian and omnivorous males. *American Journal of Clinical Nutrition* **43**, 155–162.
- Marsh AG, Sanchez TV, Mickelsen O, Chaffee FL & Fagal SM (1988) Vegetarian lifestyle and bone mineral density. *American Journal of Clinical Nutrition* **48**, 837–841.
- Marsh AG, Sanchez TV, Mickelsen O, Keiser J & Major G (1980) Cortical bone density of adult lactoovo vegetarians and omnivorous women. *Journal of the American Dietetic Association* **76**, 148–151.
- Mazess RB & Mather WE (1974) Bone mineral content of North Alaskan Eskimos. *American Journal of Clinical Nutrition* **27**, 916–925.
- Mazess RB & Mather WE (1975a) Bone mineral content in Canadian Eskimos. *Human Biology* **47**, 45.
- Mazess RB & Mather WE (1975b) Bone mineral content of North Alaskan Eskimos (letter). *American Journal of Clinical Nutrition* **28**, 567.
- Meema HE (1973) Photographic density versus bone density (letter). *American Journal of Clinical Nutrition* **26**, 687.
- Meema HE (1996) What's good for the heart is not good for the bones? (letter). *Journal of Bone and Mineral Research* **11**, 704.
- Meghji S, Morrison MS, Henderson B & Arnett TR (2001) PH dependence of bone resorption: mouse calvarial osteoclasts are activated by acidosis. *American Journal of Physiology* **280**, E112–E119.
- Michaelsson K, Holmberg L, Maumin H, Wolk A, Bergstrom R & Ljunghall S (1995) Diet, bone mass and osteocalcin: a cross-sectional study. *Calcified Tissue International* **57**, 86–93.
- Miller DR, Krall EA, Anderson JJ, Rich SE, Rourke A & Chan J (2001) Dietary mineral intake and low bone mass in men: The VALOR Study. *Journal of Bone and Mineral Research* **16**, Suppl. 1, S395.
- Morris RC Jr (2001) Acid-base, sodium and potassium as determinants of bone and calcium economy. In *Nutritional Aspects of Osteoporosis 2000. Proceedings of the 4th International Symposium on Nutritional Aspects of Osteoporosis, Switzerland, 2000. Challenges of Modern Medicine*, pp. 357–378 [P Burckhardt, B Dawson-Hughes and RP Heaney, editors]. Italy: Ares-Serono Symposia Publications.
- Muhlbauer R & Li Y (1999) Effects of vegetables on bone metabolism. *Nature* **401** 343–344.
- National Osteoporosis Society (2002) *Facts and Figures on Osteoporosis*. Bath, Avon: National Osteoporosis Society.
- New SA (1998) 'Fit but Fragile' – are elite sportswomen at an increased risk of osteoporosis? *Nutrition Bulletin* **23**, 211–213.
- New SA (1999) Bone health: the role of micronutrients. *British Medical Bulletin* **55**, 619–633.
- New SA (2001a) Nutrition, exercise and bone health. *Proceedings of the Nutrition Society* **60**, 265–274.
- New SA (2001b) Impact of food clusters on bone. In *Nutritional Aspects of Osteoporosis 2000. Proceedings of the 4th International Symposium on Nutritional Aspects of Osteoporosis, Switzerland, 2000. Challenges of Modern Medicine*, pp. 379–397 [P Burckhardt, B Dawson-Hughes and RP Heaney, editors]. Italy: Ares-Serono Symposia Publications, Academic Press.
- New SA, Bolton-Smith C, Grubb DA & Reid DM (1997) Nutritional influences on bone mineral density: a cross-sectional study in premenopausal women. *American Journal of Clinical Nutrition* **65**, 1831–1839.
- New SA, Macdonald HM, Grubb DA & Reid DM (2001) Positive association between net endogenous non-carbonic acid production (NEAP) and bone health: further support for the importance of the skeleton to acid-base balance. *Bone* **28**, Suppl. 5, S94.
- New SA, Macdonald HM, Reid DM & Dixon ASJ (2002a) Hold the soda. *New Scientist* **2330**, 54–55.
- New SA, Robins SP, Campbell MK, Martin JC, Garton MJ, Bolton-Smith C, Grubb DA, Lee SJ & Reid DM (2000) Dietary influences on bone mass and bone metabolism: further evidence of a positive link between fruit and vegetable consumption and bone health? *American Journal of Clinical Nutrition* **71**, 142–151.
- New SA, Smith R, Brown JC & Reid DM (2002b) Positive associations between fruit & vegetable consumption and bone mineral density in late postmenopausal and elderly women. *Osteoporosis International* (In the Press).
- Patterson BH, Block G & Rosenberger WF (1990) Fruit and vegetables in the American diet: data from the NHANES II Survey. *American Journal of Public Health* **80**, 1443–1449.
- Ralston SH (1999) The genetics of osteoporosis. *Bone* **25**, 85–86.
- Reed JA, Anderson JBB, Tylavsky FA & Gallagher PN Jr (1994) Comparative changes in radial bone density of elderly female lactoovo vegetarians and omnivores. *American Journal of Clinical Nutrition* **59**, 1197S–1202S.

- Reidenberg MM, Haag BL, Channick BJ, Schuman CR & Wilson TGG (1966) The response of bone to metabolic acidosis in man. *Metabolism* **15**, 236–241.
- Remer T & Manz F (1994) Estimation of the renal net acid excretion by adults consuming diets containing variable amounts of protein. *American Journal of Clinical Nutrition* **59**, 1356–1361.
- Remer T & Manz F (1995) Potential renal acid load of foods and its influence on urine pH. *Journal of the American Dietetic Association* **95**, 791–797.
- Rizzoli R, Schurch MA, Chevalley T, Ammann P & Bonjour JP (1998) Protein intake and osteoporosis. In *Nutritional Aspects of Osteoporosis '97. Proceedings of the 3rd International Symposium on Nutritional Aspects of Osteoporosis, Switzerland, 1997. Challenges of Modern Medicine*, pp. 141–158 [P Burckhardt, B Dawson-Hughes and RP Heaney, editors]. Italy: Ares-Serono Symposia Publications.
- Royal College of Physicians (2000) *Osteoporosis Clinical Guidelines for Prevention and Treatment*. London: Royal College of Physicians.
- Sebastian A, Harris ST, Ottaway JH, Todd KM & Morris RC Jr (1994) Improved mineral balance and skeletal metabolism in postmenopausal women treated with potassium bicarbonate. *New England Journal of Medicine* **330**, 1776–1781.
- Sebastian A, Hernandez RE, Portale AA, Colman J, Tatsuno J & Morris RC Jr (1990) Dietary potassium influences kidney maintenance of serum phosphorus concentrations. *Kidney International* **37**, 1341–1349.
- Sebastian A, Sellmeyer DE, Stone KL & Cummings SR (2001) Dietary ratio of animal to vegetable protein and rate of bone loss and risk of fracture in postmenopausal women (letter). *American Journal of Clinical Nutrition* **74**, 411–412.
- Sellmeyer DE, Stone KL, Sebastian A & Cummings SR for the Study of Osteoporotic Fractures (2001) A high ratio of dietary animal to vegetable protein increases the rate of bone loss and the risk of fracture in postmenopausal women. *American Journal of Clinical Nutrition* **73**, 118–122.
- Stone KL, Blackwell T, Orwoll ES, Cauley JC, Barrett-Connor E, Marcus R, Nevitt MC & Cummings SR (2001) The relationship between diet and bone mineral density in older men. *Journal of Bone and Mineral Research* **16** Suppl. 1, S388.
- Tesar R, Notelovitz M, Shim E, Kauwell G & Brown J (1992) Axial and peripheral bone density and nutrient intakes of postmenopausal vegetarian and omnivorous women. *American Journal of Clinical Nutrition* **56**, 699–704.
- Torgerson DJ, Iglesias C & Reid DM (2001) *Economics of Osteoporosis. Key Advance Series*, pp. 111–121. London: Aesculapius Medical Press.
- Tucker KL, Hannan MT, Chen H, Cupples A, Wilson PWF & Kiel DP (1999) Potassium and fruit & vegetables are associated with greater bone mineral density in elderly men and women. *American Journal of Clinical Nutrition* **69**, 727–736.
- Tylavsky F & Anderson JJB (1988) Bone health of elderly lactoovo-vegetarian and omnivorous women. *American Journal of Clinical Nutrition* **48**, 842–849.
- Wachman A & Bernstein DS (1968) Diet and osteoporosis. *Lancet* **i**, 958–959.
- Widdowson EM, McCance RA & Spray CM (1951) The chemical composition of the human body. *Clinical Science* **10**, 113–125.
- Wood RJ (1994) Potassium bicarbonate supplementation and calcium metabolism in postmenopausal women: are we barking up the wrong tree? *Nutrition Reviews* **52**, 278–280.
- World Health Organization (1994) *Study Group on Assessment of Fracture Risk and Its Application to Screening and Postmenopausal Osteoporosis. Report of a WHO Study Group. Technical Report Series* no. 84. Geneva: WHO.
- Zumda J, Cauley J, Stone K, Nevitt M, Ensrud K, Harris E, Hochberg M, Morin P, Saiz R, Joslyn G & Cummings SR (2000) An interleukin 6 promoter polymorphism is associated with hip bone loss in older women. *Osteoporosis International* **11**, S58.