

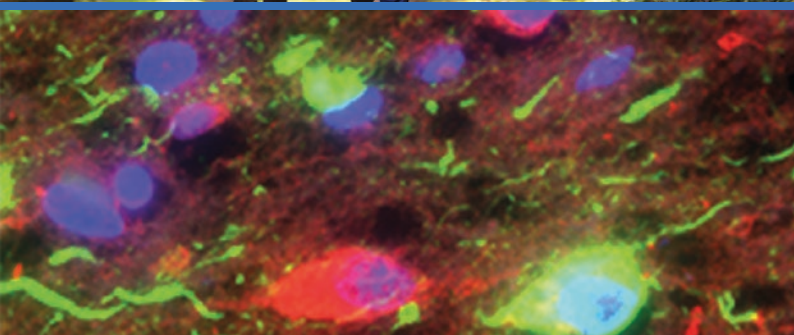
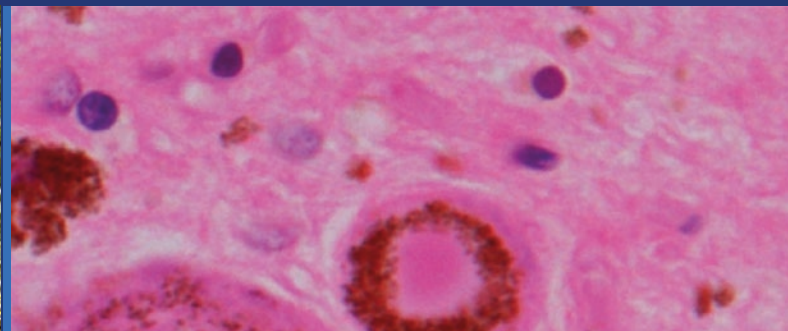
International Psychogeriatrics

journals.cambridge.org/ipg



The Official Journal of the
International Psychogeriatric Association
Better Mental Health for Older People

Issue Theme: Serious Mental Illnesses in Older Adults



CAMBRIDGE
UNIVERSITY PRESS

International Psychogeriatrics



Editorial Panel

EDITOR-IN-CHIEF

Dilip V. Jeste
San Diego, CA, USA

DEPUTY EDITORS

Henry Brodaty
Sydney, Australia

Gill Livingston
London, UK

Kostas Lyketos
Baltimore, MD, USA

STATISTICAL EDITOR

Stephan Arndt
Iowa City, IA, USA

EDITORIAL BOARD

Liat Ayalon
Ramat Gan, Israel

Olusegun Baiyewu
Ibadan, Nigeria

Helen Chiu
Hong Kong, China

Jiska Cohen-Mansfield
Tel Aviv, Israel

Yeates Cornwell
Rochester, NY, USA

Devangere P. Devanand
New York, NY, USA

Martin Dichter
Witten, Germany

Alastair J. Flint
Toronto, Canada

Orestes Forlenza
Sao Paulo, Brazil

Martin Haupt
Düsseldorf, Germany

Zahinoor Ismail
Calgary, Canada

Dimitris Kiosses
White Plains, NY, USA

Helen Lavretsky
Los Angeles, CA, USA

Raimundo Mateos
Santiago de Compostela, Spain

Kirsten Moore
London, UK

Benoit Mulsant
Toronto, Canada

Cynthia Munro
Baltimore, MD, USA

Ruth O'Hara
Stanford, CA, USA

Nancy A. Pachana
Brisbane, Australia

Kiran Rabheru
Ottawa, Canada

Mark Rapoport
Toronto, Canada

Preminder Sachdev
Randwick, Australia

Ingmar Skoog
Gothenburg, Sweden

Vihang Vahia
Mumbai, India

Johannes Wancata
Vienna, Austria

Huali Wang
Beijing, China

JUNIOR EDITORIAL BOARD MEMBERS

Ambrish Dharmadhikari
Mumbai, India

Ellen Lee
San Diego, CA, USA

Maria Marquine
San Diego, CA, USA

Naaheed Mukadam
London, UK

Olga Theou
Halifax, Canada

MANAGING EDITOR

Kate Filipiak
Milwaukee, WI, USA

BOOK REVIEW EDITOR

Barton W. Palmer
La Jolla, CA, USA

FOUNDER EDITOR

Gene Cohen
Deceased

EDITOR EMERITUS

Robin Eastwood
Bere Ferrers, UK

PAST EDITORS

Gene Cohen
Robin Eastwood
David Ames
Nicola Lautenschlager

EDITORIAL OFFICE

Elaine Halls

Subscriptions

International Psychogeriatrics (ISSN 1041-6102) is published monthly. The annual subscription price (excluding VAT), including delivery by air where appropriate, plus electronic access for subscribers of Volume 32 is £863 for institutions (US\$1596 in the USA, Canada and Mexico); the electronic only price available to institutional subscribers is £643 (US\$1192 in the USA, Canada and Mexico). For individuals ordering direct from the publisher and certifying that the journal is for their personal use the subscription price (excluding VAT) for print plus electronic access is £364 (US\$671 in the USA, Canada and Mexico) or £284 (US\$527 in the USA, Canada and Mexico) for electronic only subscriptions. Single issues are £82 (US\$152 in the USA, Canada and Mexico) plus postage. Orders, which must be accompanied by payment, may be sent to a bookseller, subscription agent or to the publisher: Cambridge University Press, Journals Fulfillment Department, UPH, Shaftesbury Road, Cambridge CB2 8BS, UK; or in the USA, Canada and Mexico: Cambridge University Press, Journals Fulfillment Department, 1 Liberty Plaza, Floor 20, New York, NY 10006, USA. EU subscribers (outside the UK) who are not registered for VAT should add VAT at their country's rate. VAT registered subscribers should provide their VAT registration number. Japanese prices for institutions are available from: Kinokuniya Company Ltd, PO Box 55, Chitose, Tokyo 156, Japan. Periodicals postage paid at New York, NY, and at additional mailing offices. POSTMASTER: send address changes in USA, Canada and Mexico to: *International Psychogeriatrics*, Cambridge University Press, Journals Fulfillment Department, 1 Liberty Plaza, Floor 20, New York, NY 10006, USA. Claims for missing issues should be made immediately on receipt of the subsequent issue.

Internet access

This journal is included in the Cambridge Journals Online service which can be found at journals.cambridge.org/ipg. For further information on other Press titles go to <http://www.cambridge.org>.

Abstracts

International Psychogeriatrics is abstracted and indexed in *Abstracts in Social Gerontology*; *Current Literature on Aging*; *AgeLine*; *Combined Health Information Database (CHID)*; *Cumulative Index to Nursing & Allied Health Literature (CINAHL)*; *Current Contents/Social and Behavioral Sciences*; *EMBASE/Excerpta Medica*; *e-psyche*; *Index Medicus/MEDLINE*; *ISI Alerting Services*; *Mental Health Abstracts*; *New Literature on Old Age*; *PsychINFO*; *PsychLIT*; *Psychological Abstracts*; *PubMed*; *Social Sciences Citation Index*; *Social Services Abstracts*; *Social Work Abstracts*; *Sociedad Iberoamericana de Información Científica (SIC) Data Bases*; *SciSearch* and *Zeitschriftenbibliographie Gerontologie (GeroLIT)*.

Copying

This journal is registered with the Copyright Clearance Center, 222 Rosewood Drive, Danvers, MA 01923, USA. Organizations in the USA who are also registered with CCC may therefore photocopy material (beyond the limits permitted by sections 107 and 108 of US Copyright Law) subject to payment to CCC of the per-copy fee of \$16.00. This consent does not extend to multiple copying for promotional purposes. Code 1041-6102/2017. ISI Tear Sheet Service, 3501 Market Street, Philadelphia, PA 19104, USA, is authorized to supply single copies of separate articles for private use only. Organizations authorized by the UK Copyright Licensing Agency may also photocopy material subject to the usual conditions. For all other use, permission should be sought from Cambridge or the American Branch of Cambridge University Press. No other part of this publication may be reproduced, stored or distributed by any means without permission in writing from Cambridge University Press, acting for the copyright holder.

Acknowledgement

(Upper left) Seniors jogging on a forest road © Kzenon /istockphoto; (Upper right) A Lewy body in a pigmented neuron of the substantia nigra of a Parkinson's disease patient (H/E stain) and (Lower left) tau pathology (green) in the hippocampus of an Alzheimer's disease patient (immunofluorescence) – both images kindly provided by Prof. Johannes Attems, Institute for Ageing and Health, Newcastle University, UK; (Lower right) Senior adults having morning tea together © Monkeybusinessimages /istockphoto