

## The Fifth Sun

### **Aztec Gods, Aztec World**

By Burr Cartwright Brundage

**The Fifth Sun** explores the myths behind the gods of the Aztec pantheon in a way that illuminates both the human and the divine in Aztec life. A splendid introduction to Aztec religion, this work also contains new insights for specialists in ethnohistory, mythology, and religion. 283 pages, illustrated, \$14.95



## A Rain of Darts

### **The Mexican Aztecs**

By Burr Cartwright Brundage

*"... a fascinating, amazingly synthetic chronicle of the legendary experiences, political and other, of the people of greater Anahuac."*—**American Historical Review**

372 pages, \$14.95

## Ancient Panama

### **Chiefs in Search of Power**

By Mary W. Helms

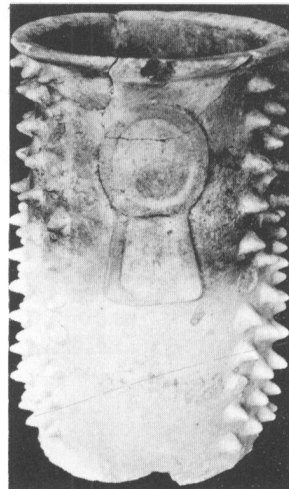
This volume adds new depth to our understanding of the political and religious elite ruling in Panama at the time of the European conquest. The author delves into the distribution, extent, and structural nature of the chiefdoms and proposes that the search for esoteric knowledge was more important than economic trade in developing long-distance contact among chiefdoms.

256 pages, illustrated, \$16.95



## Maya Archaeology and Ethnohistory

Edited by Norman Hammond and Gordon R. Willey  
Embracing a wide range of current research, this book offers new views on the intellectual history of Maya archaeology and ethnohistory and the processes operating in the rise and fall of Maya civilization.



**University of  
Texas Press**

Post Office Box 7819  
Austin, Texas 78712

# 45th ANNUAL MEETING SOCIETY FOR AMERICAN ARCHAEOLOGY

Philadelphia Sheraton Hotel  
Philadelphia, Pennsylvania  
Wednesday, April 30 to Saturday, May 3, 1980

*Annual Meeting Chairperson:* Ernestene L. Green, Regional Archaeologist, Recreation and Land, U.S. Forest Service, Federal Building, Missoula, MT 59807.

## GUIDELINES FOR CONTRIBUTIONS

The Executive Committee has ruled that the privilege of presenting papers at the annual meeting of the Society will be restricted to paid-up members of the Society. The Committee further decided that a person may not deliver more than one paper although (s)he may, at the same meeting, chair a session or serve as joint author of a paper presented by someone else.

Completed symposia proposals, long and short abstracts of papers, abstracts of contributed papers and of research reports must reach the program chairperson by October 31, 1979. Long abstracts of contributed papers and symposium papers will be used for evaluation by the Program Committee. Authors of contributed papers and symposia organizers will be notified of the Program Committee's decision as soon as possible. Short abstracts of all papers and research reports accepted for presentation will be included in the final program.

### **SYMPOSIA (2-hour, 4-hour)**

A symposium consists of a group of papers on a common theme. The symposium topic and the individual papers within it will be reviewed. Changes, such as consolidation of two symposia or changes in the individual papers, may be recommended.

**Symposia suggestions**, including title of symposium and name, address, and telephone number of the organizer(s), must be sent before October 1, 1979. At the same time, organizer(s) should request copies of *Guidelines for Symposium Organizers*.

**Complete symposia** proposals must be submitted as a package by the symposium organizer(s) and must be received by October 31, 1979. The package should include for every paper presented in the symposium: *long abstracts* of no less than 300 and no more than 600 words, double-spaced in clean, typewritten form (5 copies); *short abstracts* of 100 words or less of each paper with author(s)' name(s) and institution, typewritten on separate pages in the style shown in the sample below; *request for audiovisual equipment* (type of projector, blackboard, etc.).

### **CONTRIBUTED PAPERS (20 minutes)**

Contributed papers are to be distinguished from Research Reports in that they generalize, synthesize, or compare and are addressed to problems of theory, method, culture history, or culture process. Contributed papers will be reviewed, and changes may be suggested.

Contributed papers must follow the same format as the symposia papers, including short and long abstracts, as well as suggestions as to topical and/or geographical area to which the paper may be assigned (e.g., Plains Archaeology, Method and Theory, Ceramic Analysis).

### **RESEARCH REPORTS (10 minutes or poster)**

A research report is a description of the results of a recent field or laboratory research project. This year the research report section will be divided into oral presentation and poster session; the author may choose which form to use. The poster session is especially appropriate for research results that can be described graphically better than verbally. Research reports will be reviewed. If the number submitted exceeds the space and time available, they will be accepted in the order of submission.

Research reports must be received in the following form: *abstract* of 100 words or less; *suggestions* as to topical or geographical area; *audiovisual equipment* required.

### *Sample Abstract:*

Name of Senior Author (Institution) Title in Caps. Abstract in single paragraph form:

Smith, Jane J. (Arizona) THE ROLE OF ARCHAEOLOGY IN SOCIETY.

Archaeology's Role in Modern Society is discussed, with an emphasis on . . . (up to 100 words *maximum* for short abstract and 300-600 words for long abstract).

Junior Author(s) Name(s) in the following form at bottom of page:

Jones, Peter J. (see Smith, Jane J.)

Brown, Susan (see Smith, Jane J.)

Please follow form *exactly*. Submit 2 copies of short abstract, 5 copies of long abstracts.

All other scheduling and room requests (organization or committee meetings, promotional booths, etc.) should be directed to Lucille D. Horn, 1703 New Hampshire Ave., N.W., Washington, DC 20009.

## CONTENTS

EDITOR'S CORNER	Jeremy A. Sabloff	211
Historic Site Content, Structure, and Function	Stanley South	213
Comments on the Theory of Holocene Refugia in the Culture History of Amazonia	Richard G. Whitten	238
Climatic Oscillation as a Factor in the Prehistory of Amazonia	Betty J. Meggers	252
Geoarchaeology: The Geologist and Archaeology	Fekri A. Hassan	267
REPORTS		
Field Systems and Frost Drainage in the Prehistoric Agriculture of the Upper Great Lakes	Thomas J. Riley and Glen Freimuth	271
Thermoluminescence Determinations on Early Ceramic Materials from Coastal Southern California	Christopher E. Drover, R. E. Taylor, Thomas Cairns, and Jonathon E. Ericson	285
Osteological Identification of Sandhill Crane versus Turkey	L. L. Hargrave and S. D. Emslie	295
A Maya Dam in the Copan Valley, Honduras	B. L. Turner II and William C. Johnson	299
Paleodemography of the Valdivia III Phase at Real Alto, Ecuador	Linda Klepinger	305
9,700 Years of Maritime Subsistence on the Pacific: An Analysis by Means of Bioindicators in the North of Chile	Agustín Llagostera Martínez	309
The Aggressive Field Lab	Jacqueline Nichols and June Evans	324
CULTURAL RESOURCE MANAGEMENT		
"Significance" in Contract Archaeology	Floyd W. Sharrock and Donald K. Grayson	327
A Reply to Sharrock and Grayson on Archaeological Significance	L. Mark Raab and Timothy C. Klinger	328
Using NTIS, or How to Disseminate Archaeological Reports	Gary F. Somers	330
COMMENTS		
The Olmec in the Central Highlands: A Non-Quintessential Approach	Paul Tolstoy	333
A Comment on Curren's "Potential Interpretations of 'Stone Gorget' Function"	William A. Starna	337
Comments on "Application of Orthophoto Mapping to Archaeological Problems"	James I. Ebert, Thomas R. Lyons, and Dwight L. Drager	341
A Comment on Bettinger: Problems in Archaeological Interpretation	Frederick C. Munday and Thomas R. Lincoln	345
Curation, Statistics, and Settlement Studies: A Reply to Munday and Lincoln	Robert L. Bettinger	352
CURRENT RESEARCH		360
REVIEWS		
Voorhies: The Chantuto People: An Archaic Period Society of the Chiapas Littoral, Mexico	Helen Perlstein Pollard	382
Benson (editor): The Sea in the Pre-Columbian World	Stuart D. Scott	383
Handler and Lange: Plantation Slavery in Barbados: An Archaeological and Historical Investigation	Leland Ferguson	384
Reher (editor): Settlement and Subsistence Along the Lower Chaco River: The CGP Survey	R. Gwinn Vivian	385
Fletcher (editor and annotator): The Wetherills of the Mesa Verde: Autobiography of Benjamin Alfred Wetherill	Robert H. Lister	386
Keel: Cherokee Archaeology	David J. Hally	387
SOCIETY FOR AMERICAN ARCHAEOLOGY		389
ANNOUNCEMENT OF ANNUAL MEETING		inside back cover