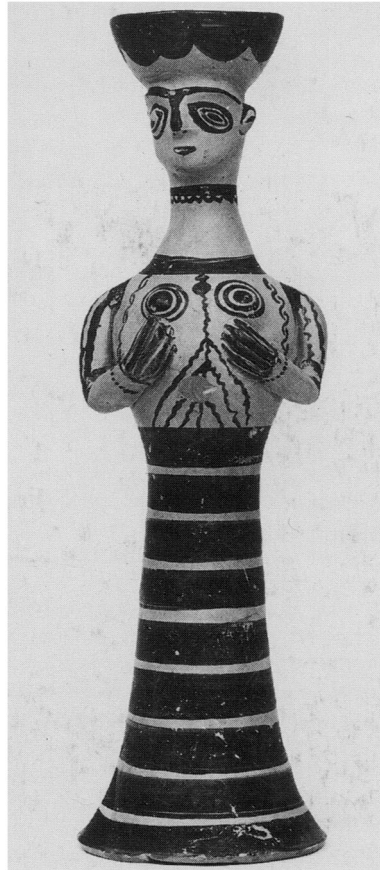


ARCHAEOLOGICAL REPORTS FOR 1997-1998



CONTENTS

ARCHAEOLOGY IN GREECE 1997-98

NUMISMATIC APPENDIX

ARCHAEOLOGY IN CYPRUS 1987-97

D. J. Blackman

J. Baker and N. Hardwick

Louise Steel

PUBLISHED BY THE COUNCIL OF THE SOCIETY
FOR THE PROMOTION OF HELLENIC STUDIES

AND

THE MANAGING COMMITTEE
OF THE

BRITISH SCHOOL AT ATHENS

1998

ABBREVIATIONS

Chronology:

A	Archaic	IA	Iron Age	E	early
BA	Bronze Age	M	Minoan	F	final
Byz	Byzantine	Med	Mediaeval	L	late
C	Classical	Mes	Mesolithic	M	middle
Ch	Christian	Myc	Mycenaean	P	pre- or proto
Cor	Corinthian	N	Neolithic	S	sub-
Cyc	Cycladic	Ó	Orientalizing	anc.	ancient
DA	Dark Age	Ott	Ottoman	mod.	modern
G	Geometric	Pal	Palaeolithic		
Gr	Greek	PR	Prehistoric		
H	Helladic	R	Roman		
HL	Hellenistic				

Also used in combination, e.g.:

MBA	middle Bronze Age
ECh	early Christian

Compass points: N S E W and combinations thereof.

Decoration of pottery: bg black glaze bf black figure
 rf red figure wg white ground

Bibliography:

General:

AA	<i>Archaeologischer Anzeiger</i>
AAA	<i>Athens Annals of Archaeology</i>
ADelt	<i>Archaiologikon Deltion (Chr = Chronika)</i>
AE	<i>Archaiologike Ephemeris</i>
AEMTH	<i>Archaiologiko Ergo ste Makedonia kai Thrake</i>
AJA	<i>American Journal of Archaeology</i>
AR	<i>Archaeological Reports</i>
DOP	<i>Dumbarton Oaks Papers</i>
PAE	<i>Praktika tes en Athenais Archaiologikes Etaireias</i>
RA	<i>Revue archéologique</i>
REG	<i>Revue des études grecques</i>

In the Numismatic Appendix:

BSFN	<i>Bulletin de la Société Française de Numismatique</i>
NAC	<i>Quaderni Ticinesi: Numismatica e Antichità Classiche</i>
NC	<i>Numismatic Chronicle</i>
NCirc	<i>Numismatic Circular</i>
RBN	<i>Revue Belge de Numismatique</i>
RN	<i>Revue Numismatique</i>
SNR	<i>Schweizer Numismatische Rundschau</i>

* * *

Greek place-names: In order to standardize the spelling of site-names in *Archaeological Reports*, they will usually be transliterated using British Library conventions as follows:

α/a β/b γ/g (γγ/ng κκ/nk γξ/nx χχ/nch) δ/d ε/e ζ/z η/e θ/th ι/i κ/k λ/l μ/m (μβ/b μπ/b)
 ν/n ο/o π/p ρ/r σ,ς/s τ/t υ/u or y φ/ph χ/ch ψ/ps ω/o

A few exceptions to this rule are made in cases in which anglicized place-names have long been in use (Rhodes, Corinth, Athens, etc.) and where V is a well-established rendering of β (Vergina, Veroia).

CONTENTS

Archaeology in Greece 1997-98	1
Athens	3
Attica	12
Islands of the Saronic Gulf.	18
Korinthia	20
Argolis	28
Arkadia	33
Lakonia	35
Achaia	39
Aitolia-Akarnania	43
Kephallenia	46
Eleia	46
Messenia	52
Kerkyra and Thesprotia	56
Boiotia	59
Euboea	61
Phokis	65
Northwest Greece	66
Southern Thessaly	71
Phthiotis	72
Northern Thessaly	74
Central Macedonia	75
Western Macedonia	84
Eastern Macedonia	89
Thrace	96
Northeast Aegean Islands	100
Cyclades and Samos	104
Dodekanese and Amorgos	108
Central Crete	111
Eastern Crete	117
Western Crete	120
Numismatic appendix to 'Archaeology in Greece'	129
Archaeology in Cyprus	137
Nicosia district	137
Limassol district	139
Larnaca district	141
Paphos district	144

Cover illustration: Terracotta wheelmade figure from Midea, West Gate area, 13th Ct BC (see p. 31).

Acknowledgements: Particular gratitude is due to a new contributor, Louise Steel, for taking on the substantial task of summarizing a decade of archaeological work in Cyprus. The editor would also like to thank Julian Baker and Nicholas Hardwick for supplying our first numismatic survey, and all those who assisted David Blackman in the production of 'Archaeology in Greece': Lesley Beaumont, Anne Blackman, Jill Carington Smith, Helen Fields, Lin Foxhall, Eleni Hatzaki, Colin Macdonald, Yana Spence, Iphigenia Tournavitou, David Turner, Vicki Tzavara and Penny Wilson.

Archaeological Reports is published by the Society for the Promotion of Hellenic Studies and the British School at Athens, for their subscribers. It is now also available to subscribers to the *American Journal of Archaeology* (see back cover) and to members of the Society for the Promotion of Byzantine Studies under similar terms. Members of the public can purchase copies from the Secretary, The Society for the Promotion of Hellenic Studies, Senate House, Malet Street, London WC1E 7HU, UK.

'Archaeology in Greece', compiled annually by the Director of the British School, is the only account of recent archaeological work in Greece published in English. It is usually supplemented each year by reports from other parts of the ancient Greek and Byzantine world: South Italy, Sicily, Sardinia, Cyprus, Asia Minor, the Black Sea and North Africa are covered regularly.

Archaeological Reports is very grateful for the support of the A.G. LEVENTIS FOUNDATION

Editor: Dr Lyn Rodley, The Society for the Promotion of Hellenic Studies,
Senate House, Malet Street, London WC1E 7HU, UK.

© Authors, the Society for the Promotion of Hellenic Studies, and the British School at Athens, 1998
Printed in England by Stephen Austin and Sons Ltd., Hertford.