

INFORMATION FOR CONTRIBUTORS

Environmental Practice is an English-language journal published quarterly by the National Association of Environmental Professionals. It serves an international audience of environmental professionals in practice and research. *Environmental Practice* is peer-reviewed and accepts original manuscripts that have not previously been published in whole or in part in a peer-reviewed journal or in a widely available book. The general philosophy of the journal is outlined in the Mission Statement, which is reproduced in full at the end of the Table of Contents in each issue.

Priority for publication is given to manuscripts that offer clear, insightful views on an environmental problem from an interdisciplinary perspective. *Environmental Practice* seeks especially to publish studies that link data and findings in science and technology with issues of public policy, health, environmental quality, law, political economy, management, and the appropriate standards for expertise. Because the readership of *Environmental Practice* is very broadly based, manuscripts should not be burdened by extensive, unexplained, technical language familiar only to a small group of specialists.

Manuscripts are accepted throughout the year. News items should be submitted by the first day of the month, three months prior to publication. For example, news items to appear in December should be submitted by 1 September.

Kinds of Manuscripts Sought

Environmental Practice publishes several categories of manuscripts as described below. Three of these categories, Research Articles, Environmental Reviews, and Commentaries, are peer-reviewed.

Research Articles: manuscripts that report the results of systematic study on an environmental problem. Typically, research articles will (a) report the results of a formal research exercise or (b) summarize sys-

tematic analysis of one or more case studies of particular interest. Environmental professionals in academic or research laboratory settings may be more likely to submit formal research reports. Professionals in consulting practice, agencies, or other organizations may be more likely to submit manuscripts based on case studies. Under most circumstances, Research Articles will not be over 5000 words of text. Most will be substantially shorter. Tables, figures, and reference lists need not be included in the word count. All Research Articles are peer-reviewed.

Environmental Reviews: manuscripts that organize and summarize a research literature or case study literature that is otherwise scattered and not easily accessible. Environmental Reviews will generally not be over 6000 words of text. Tables, figures, and reference lists need not be included in the word count. Most will be solicited, but contributions are welcome after consultation with the editor. All Environmental Reviews are peer-reviewed.

Commentaries: manuscripts that discuss a particular subject or problem. Typically, these manuscripts will identify the subject and discuss it in terms of (a) recent research of importance, (b) the implications of research for practice, (c) the interactions among research, policy, and practice, or (d) the social, cultural, economic, legal, or ethical context of the subject. Under most circumstances, Commentaries will not be over 2500 words. Tables, figures, and reference lists need not be included in the word count. All Commentary manuscripts are peer-reviewed.

Book Reviews: manuscripts that portray the content, quality, and significance of books of wide interest to environmental professionals and their practices. Book Reviews should not exceed 650 words, but with the approval of the editor may reach 1300 words.

News Articles: manuscripts that report on (a) an environmental situation or events of

broad interest to environmental professionals, or (b) events and activities of the National Association of Environmental Professionals and its Chapters, Committees, and Working Groups. News Articles will generally range from 50 to 2000 words, depending on the subject. Tables, figures, and reference lists need not be included in the word count. Only in rare circumstances will News Articles be subjected to peer-review.

Points-of-View: statements of opinion intended to provoke discussion and debate on particular issues. These manuscripts will generally range from 200 to 650 words. Such manuscripts will not be subject to peer-review, because they are personal opinion. However, the editor may seek advice on matters of tone and fairness.

Letters to the Editor: responses to Research Articles, Environmental Reviews, Commentaries, Book Reviews, News Articles, Points-of-View, and Editorials. These manuscripts will generally range from 50 to 500 words. Letters to the Editor will not be peer-reviewed, but they may be used to solicit responses from others for simultaneous publication.

The editors welcome inquiries about manuscript ideas. You may also contact the editors to request exceptions to the word count limits given above. The Editor-in-Chief, Dr. John H. Perkins, can be reached at 360-866-6000, ext. 6503 or <perkinsj@elwha.evergreen.edu>. You can reach the Managing Editor, Dr. Catherine A. French, at 360-866-6000, ext. 5955 or <frenchca@evergreen.edu>.

Manuscript Preparation and Submission

1. Membership in the National Association of Environmental Professionals is not a requirement for acceptance of a manuscript for publication in *Environmental Practice*.
2. Send the original and four clear copies of Research Articles, Environmental Reviews,

and Commentary. Send the original and two clear copies of Book Reviews, News Articles, Points-of-View, and Letters to the Editor. Please indicate the kind of manuscript intended. [Note: Figures based on original artwork should be submitted for review as good copies; the author should retain the originals until the manuscript is accepted.]

3. Manuscripts should be sent to the editorial office:

Dr. Catherine A. French, Managing Editor
Environmental Practice
Mailstop SEM 3127
The Evergreen State College
2700 Evergreen Parkway NW
Olympia, Washington 98505 USA

4. Traditions in style and documentation differ considerably among the different disciplines published in *Environmental Practice*. Accordingly, the journal will accept manuscripts reflecting a wide variety of these established traditions. Nevertheless, authors should use the following conventions in the different parts of their manuscripts, and the manuscripts should be ordered in the following way:

a. **Cover sheet:** Attach a cover sheet including author name(s); title or position; institutional affiliation; corresponding author address, telephone number, Fax number, and E-mail address, and study sponsors, if any. Both the cover sheet and first page should include the manuscript's title. All pages should be numbered, with the cover sheet as page 1. To facilitate blind peer reviews, author names and affiliations should appear only on the cover sheet.

b. **Acknowledgments-Abbreviations-Key words:** Place on a separate sheet, located after the cover sheet. This journal resists the use of acronyms and other forms of abbreviation. As a general rule, an acronym is appropriate only (a) if it is used frequently in a portion or all of a manuscript or (b) if the acronym itself has entered common usage in everyday conversation (e.g., "EPA" for the "United States Environmental Protection Agency"). The use of more than two different acronyms in one manuscript is unlikely to be acceptable. If abbreviations or acronyms are used, they should be explicitly

listed and defined on a separate sheet. For indexing purposes, provide up to eight key words.

c. **Abstract:** Manuscripts of Research Articles, Environmental Reviews, and Commentaries should be accompanied by an abstract of no more than 200 words. Abstracts should be a stand-alone summary of the manuscript's central findings and argument, not an overview of the manuscript's outline.

d. **Text**

1. **Organization:** Research Articles and Environmental Reviews prepared by authors schooled in the natural and social sciences will typically have separate sections for Introduction, Methods, Results, Discussion, and Conclusions. Authors schooled in the legal and humanistic disciplines are likely to organize their materials in a way that illuminates the logical connections between different elements of the argument. In all cases, use appropriate section headings to help guide the reader.

2. **Physical features:** Manuscripts, including references, tables, legends, and quotations, should be typed, double spaced, on one side of white paper with margins of at least one inch on all sides, and without right-hand justification. Figures should be clear prints of electronic versions or good copies of original artwork. All manuscripts should be sent to the Editorial Office (address above). In all cases, authors should retain a copy of the complete manuscript for their files.

e. **Documentation and references:** This journal recognizes that authors trained in different disciplines frequently use different methods for providing documentation. Therefore, the first guideline is that authors should use a standard system for their discipline. Whatever system is used should allow all readers (even people trained in different disciplines) to have easy access to an author's references. The style used should also be consistent throughout the manuscript. Authors may use either one of the two systems listed below.

1. **Author-date.** This system is widely used in the natural and social sciences. Refer-

ences are cited in text like so: "Smith (1990) showed . . ." or "as seen elsewhere (Smith, 1990)." References cited in text are listed alphabetically in a References section at the end of the manuscript. The following examples illustrate an appropriate style for most kinds of documents listed in the References section:

Article in journal

Author, A.B., and C.D. Author. 1997. Title of Article. *Name of Journal* Volume(Issue):starting page number-ending page number.

Article or chapter in book

Author, A.B., C.D. Author, and E.F. Author. 1998. Title of Article or Chapter. In *Title of Book*, G.H. Editor and I.J. Editor, eds., 4th edition. Publisher, Place of Publication, starting page number-ending page number.

Book

Author, A.B., and C.D. Author. 1994. *Title of Book*. Publisher, Place of Publication, total pages in book.

Edited book

Editor, A.B., and C.D. Editor, eds. 1996. *Title of Book*. Publisher, Place of Publication, total pages in book.

Dissertation or thesis

Author, A.B. 1998. *Title*, (Ph.D. Dissertation) OR (Master's Thesis). University, City, State, total pages in document.

Reports by author

Author, A.B. 1993. *Title of report*. Report Number, Agency, City, State, total pages in report.

Reports by agency

Name of agency. 1995. *Title of report*. Report Number, City, State, total pages in report.

Personal communication (e.g., letter, telephone, e-mail, interview)

Person, A.B. 1999. Personal communication, Day-Month. Person's title or position, Person's agency or organization, City, State.

Web sites

Name of Site/Subsection of Site. Year of access to site. *Title of subsection*. URL address of site. Day-Month of access to site.

2. *Endnotes.* Endnotes consist of a superscript number in the text and a corresponding, numbered list of citations placed at the end of the text. This method of documentation is frequently used in historical, legal, or humanistic writing, and it is useful for citations that must contain more than one reference. Endnotes with more than one reference should be separated by semi-colons. Avoid, if possible, use of endnotes simply to further explain the text rather than to provide documentation. Subsequent references to a source should give the last name of the author(s), shortened title, and relevant page(s). Do not use *op. cit.*, *ibid*, *idem*, *infra*, or *supra*. See *The Chicago Manual of Style* for details not addressed here. The following examples illustrate proper style for endnotes:

Article in journal

A.B. Author and C.D. Author, 1997, "Title of Article," *Name of Journal* Volume(Issue):starting page number-ending page number.

Article or chapter in book

A.B. Author, C.D. Author, and E.F. Author, 1998, "Title of Article or Chapter," in *Title of Book*, G.H. Editor and I.J. Editor, eds., 4th edition, Publisher, Place of Publication, starting page number-ending page number.

Book

A.B. Author and C.D. Author, 1994, *Title of Book*, Publisher, Place of Publication, total pages in book.

Edited book

A.B. Editor and C.D. Editor, eds., 1996, *Title of Book*, Publisher, Place of Publication, total pages in book.

5. Authors are encouraged to illustrate their work with tables, figures, and photographs. Authors of accepted manuscripts must provide original illustrations on disk or in camera-ready form. Color photographs will be included only if they are essential for the integrity of the manuscript; all costs of color photos must be paid by the author(s). Tables should not duplicate data also provided in figures or in the text. For tables of data that might be of value only to a few readers, authors should consider indicating

that the data is available on request from the author. Table and Figure legends should make them understandable without reference to the text. Tables and Figures must be referred to in the text. The manuscript text should indicate the desired location of each Table and Figure.

6. Use the International System of Units (SI) or metric units. If necessary for clarity or common usage, other units may be included in parentheses immediately following the acceptable units.

7. *Environmental Practice* uses a double-blind peer-review process. The reviewer will not know the identity or location of the author(s), and the author(s) will receive reviewer's comments without the reviewer's identity or location. Authors are invited to submit names of appropriate reviewers, but the final choice of reviewers lies with the editor. Authors will be notified of the disposition of their manuscript as soon as possible. The goal of this journal is to have a decision to the author(s) within 6–8 weeks of receipt of manuscript.

8. Upon acceptance of manuscripts, authors will be requested to send the editorial office a disk (electronic) version of the manuscript as well as two revised paper copies. The preferred word processing programs are WordPerfect or Word. The preferred disk is a 3.5-inch disk formatted for DOS or Windows. Please contact the editorial office for exceptions: an author's access to computing equipment will not be a factor in the publication of a manuscript.

9. The final version of the manuscript (both disk and paper copies) should include a short biographical sketch of each author.

10. All authors must sign the "Transfer of Copyright" agreement before the manuscript can be published. (U.S. government officers or employees whose submitted work was prepared as part of their employment are exempt from the transfer requirement, but they must certify their status.) This transfer agreement enables the National Association of Environmental Professionals to protect the copyrighted material for the authors, but authors do not thereby relinquish proprietary rights or

rights to use their work in the future. The copyright transfer covers the exclusive rights to reproduce and distribute the manuscript, including reprints, photographic reproduction, microfilm, electronic versions, and all other reproduction methods, plus translations into languages other than English.

11. The corresponding author will receive page proofs for final proofreading shortly before the article is scheduled for publication. Authors bear full responsibility for accuracy and completeness of their material. Any corrections (not revisions) should be made at this time, and the page proofs must be returned to the publisher within 72 hours of receipt. Extensive revisions are strongly discouraged at this stage of the publication process and, if permitted by the editor and publisher, are likely to result in special charges to the author.

12. It is a condition of publication that manuscripts submitted to this journal have not been published previously, in part or in whole, in a peer-reviewed journal. All prior presentations of the manuscript material must be disclosed to the editor at the time of initial manuscript submission. It is also a condition of publication that the author(s) will not simultaneously submit or publish the material elsewhere.

13. Authors will be sent a reprint order form when they are sent page proofs. If reprints are desired, the completed form along with payment must be returned to the publisher at the same time page proofs are returned.

14. This journal features a full-color illustration on the cover of each issue, the cost of which is borne by the journal. The cover is available to any contributor whose manuscript is accepted for publication, provided the photographic material is original, not previously published, and of high quality. For each submission, two 35mm slides or two 5 x 7 in (13 x 18 cm) or larger prints should be sent to the editorial office after the manuscript has been accepted for publication. The top of the image should be indicated and the submission should include a brief caption and credit on the back of the photo. Note that the submission, whether in slide or print form, should be in sharp focus.

National Association of Environmental Professionals Membership Form

NAEP Membership includes a subscription to *Environmental Practice*

Please Print)
 Name _____
 Street or P.O. Box _____ Home Business
 City _____ State _____ Zip _____
 Company Name/ Agency/College _____
 Title/position _____
 Telephone _____ Fax _____
 E-Mail: _____

ANNUAL MEMBERSHIP FEES

General Membership \$95.00/1 year \$185.00/2 years \$270.00/3 years

EDUCATION

College/University _____ Degree _____
 Specialties _____ Years of Experience _____
 Associate Membership \$80.00/yr
 Student Membership \$40.00/yr (Proof of student status required)
 Spouse Membership \$45.00/yr (Environmental Practice not Included)
 Senior Membership \$55.00/yr
 Member # and Spouse name _____

METHOD OF PAYMENT

Membership Dues \$ _____ Check/money order for \$ _____ payable to NAEP/OUP
 Chapter Dues \$ _____ Charge \$ _____ to my VISA / MasterCard / Amex
(circle one)
 International Mailing \$ _____ (Canada/Mexico add \$15; all others add \$20)
 Total Amount Due \$ _____
 Card Number: _____ Exp Date _____
 Signature _____

Payments must be in US dollars/ US banks.
 I/we have read, understand and subscribe to the Code of Ethics and Standards of Practice for Environmental Professionals of the National Association of Environmental Professionals.
 Signature _____

Send payment to: Oxford University Press, 2001 Evans Road, Cary, NC 27513 (Make checks payable to NAEP/OUP)

NAEP CHAPTERS

In addition to membership in the National Association, NAEP maintains a network of regional, state, local, and student chapters that offer additional opportunities for professional growth. Check below if you would like to join one of the chapters and include applicable dues in addition to the amount for NAEP membership.

- | | |
|--|---|
| STATE/LOCAL CHAPTERS | STUDENT CHAPTERS (no fee) |
| <input type="checkbox"/> Alaska \$20 | <input type="checkbox"/> Auburn University |
| <input type="checkbox"/> California \$40 | <input type="checkbox"/> Duke University |
| <input type="checkbox"/> Chesapeake \$10
(DE, MD, VA) | <input type="checkbox"/> George Washington University |
| <input type="checkbox"/> Florida \$20 | <input type="checkbox"/> Indiana University |
| <input type="checkbox"/> Hawaii \$15 | <input type="checkbox"/> Kansas State University |
| <input type="checkbox"/> Illinois \$35 | <input type="checkbox"/> Miami University |
| <input type="checkbox"/> Indiana \$10 | <input type="checkbox"/> Middle State Tennessee University |
| <input type="checkbox"/> Metro Washington \$25
zips 206-208, 220-223 | <input type="checkbox"/> North Carolina State University |
| <input type="checkbox"/> Michigan \$50 | <input type="checkbox"/> Ohio University |
| <input type="checkbox"/> Mid-America \$15 | <input type="checkbox"/> Rensselaer Polytechnic Institute |
| <input type="checkbox"/> New England \$25
(CT, MA, ME, NH, RI, VT) | <input type="checkbox"/> Saint Leo College |
| <input type="checkbox"/> New Jersey \$30 | <input type="checkbox"/> Shawnee State University |
| <input type="checkbox"/> North Carolina \$25 | <input type="checkbox"/> State University of New York |
| <input type="checkbox"/> Ohio | <input type="checkbox"/> Texas A&M University-College Station |
| <input type="checkbox"/> PA \$25 | <input type="checkbox"/> Texas A&M University-Kingsville |
| <input type="checkbox"/> Grtr Philadelphia \$20 | <input type="checkbox"/> University of Akron |
| <input type="checkbox"/> Rocky Mtn. \$20
(AZ, CO, ID, MT, NV, NM, UT, WY) | <input type="checkbox"/> University of Arkansas-Little Rock |
| <input type="checkbox"/> Texas \$40 | <input type="checkbox"/> University of Houston-Clear Lake |
| | <input type="checkbox"/> University of Maine |
| | <input type="checkbox"/> University of Michigan |

MEMBERSHIP CATEGORIES

General Membership is open to individuals who have earned an undergraduate or graduate degree and have at least three years experience working in the environmental field. General members may vote and hold office.

Associate membership is open to individuals who do not meet the requirements for general membership.

Student membership is limited to full-time students pursuing an environmental degree. A copy of a current transcript and college ID is required and must accompany the application.

Environmental Practice Subscription Form

- Yes! I would like to subscribe to *Environmental Practice*:
- Institutions \$125 per year
 - Individuals \$80 per year
 - Students: \$40* per year
- (* Note: Students must include copy of current ID)
- Please send detailed information on manuscript submission
- Enclosed is my check payable to Oxford University Press.
- Please charge my Mastercard VISA
 American Express Diners

Account number _____ Exp. Date _____ Signature _____
 Name _____
 Address _____
 City/State/Zip _____
 Country _____

Note: Individual rates apply only when issues are shipped to a private address and payment is made with a personal check or credit card. Prices are quoted in US dollars. Subscriptions can be accepted for complete volumes only. All subscriptions in Canada are now subject to 7% GST.



Orders must be accompanied by the correct payment. The price includes handling and postage by air-speeded delivery. Subscriptions are entered on a per-volume basis only, and dispatch will commence only after receipt of correct payment. Personal subscriptions are available to individuals paying by personal check/credit card and must not be donated to a library. All subscriptions in Canada are subject to a Goods and Services Tax. Please add 7% to the prices quoted. Subscribers in Europe (EC), please either send details of sales tax (VAT) registration/exemption or add local sales tax to the prices quoted. Claims must be notified within four months of dispatch/order date (whichever is later.)

2001 Evans Road, Cary, NC 27513 • 1-800-852-7323 (US and Canada) • Fax: 919-677-1714 • e-mail: jnlorders@oup-usa.org

National Association of Environmental Professionals
Code of Ethics and Standards of Practice For Environmental Professionals

The objectives of Environmental Professionals are to conduct their personal and professional lives and activities in an ethical manner. Honesty, justice and courtesy form moral philosophy which, associated with a mutual interest among people, constitute the foundation of ethics. Environmental Professionals should recognize such a standard, not in passive observance, but as a set of dynamic principles guiding their conduct and way of life. It is their duty to practice their profession according to this Code of Ethics.

As the keystone of professional conduct is integrity, Environmental Professionals will discharge their duties with fidelity to the public, their employers, clients, and with fairness and impartiality to all. It is their duty to interest themselves in public welfare, and to be ready to apply their special knowledge for the benefit of mankind and their environment.

Creed

The objectives of an Environmental Professional are:

1. to recognize and attempt to reconcile societal and individual human needs with responsibility for physical, natural, and cultural systems.
2. to promote and develop policies, plans, activities, and projects that achieve complementary and mutual support between natural and man-made, and present and future components of the physical, natural and cultural environment.

Ethics

As an Environmental Professional I will:

1. be personally responsible for the validity of all data collected, analyses performed, or plans developed by me or under my direction. I will be responsible and ethical in my professional activities.
2. encourage research, planning, design, management and review of activities in a scientifically and technically objective manner. I will incorporate the best principles of the environmental sciences for the mitigation of environmental harm and enhancement of environmental quality.
3. not condone misrepresentation of work I have performed or that was performed under my direction.
4. examine all of my relationships or actions which could be legitimately interpreted as a conflict of interest by clients, officials, the public or peers. In any instance where I have a financial or personal interest in the activities with which they are directly or indirectly involved, I will make a full disclosure of that interest to my employer, client, or other affected parties.
5. not engage in conduct involving dishonesty, fraud, deceit, or misrepresentation or discrimination.

6. not accept fees wholly or partially contingent on the client's desired result where that desired result conflicts with my professional judgement.

Guidance for Practice as an Environmental Professional

As an Environmental Professional I will:

1. encourage environmental planning to begin in the earliest stages of project conceptualization.
2. recognize that total environmental management involves the consideration of all environmental factors including: technical, economic, ecological, and sociopolitical and their relationships.
3. incorporate the best principle of design and environmental planning when recommending measures to reduce environmental harm and enhance environmental quality.
4. conduct my analysis, planning, design and review my activities primarily in subject areas for which I am qualified, and shall encourage and recognize the participation of other professionals in subject areas where I am less experienced. I shall utilize and participate in interdisciplinary teams wherever practical to determine impacts, define and evaluate all reasonable alternatives to proposed actions, and assess short-term versus long-term productivity with and without the project or action.
5. seek common, adequate, and sound technical grounds for communication with and respect for the contributions of other professionals in developing and reviewing policies, plans, activities, and projects.
6. determine that the policies, plans, activities or projects in which I am involved are consistent with all governing laws, ordinances, guidelines, plans, and policies, to the best of my knowledge and ability.
7. encourage public participation at the earliest feasible time in an open and productive atmosphere.
8. conduct my professional activities in a manner that ensures consideration of technically and economically feasible alternatives.

Encourage Development of the Profession

As an Environmental Profession I will:

1. assist in maintaining the integrity and competence of my profession.
2. encourage education and research, and the development of useful technical information relating to the environmental field.
3. be prohibited from lobbying in the name of the National Association of Environmental Professionals.
4. advertise and present my services in a manner that avoids the use of material and methods that may bring discredit to the profession.

Committee Coordinators

NAEP has numerous committees and working groups. If you are interested in participating in one please contact the chair.

1999 Conference Chair: Fred Pinkney
tel: 816-822-3304; email: fpinkne@burnsmcd.com

Publications: John R. Daughtery, PhD
tel: 303-497-6875; email: johnd@mrd3.mmm.ucar.edu

Certifications, Standards of Practice & Ethics Co-chairs:
Tony E. Eggleston, PhD, CEP tel: 919-467-4516;
email: tony.ellen.homestead@worldnet.att.net

Co-Chair and Ethics Committee Chair: Mark Finkelstein
tel: 919-755-6300; email: 73411.360@compuserve.com

Membership Co-Chairs: James Spangler
tel: 919-828-1903; email: jaspangler@aol.com

Fellow Membership Coordinator: Audrey Binder, CEP
tel: 202-260-3380 email: binder.audrey@epamail.epa.gov

Chapters: Bruce Hasbrouck
tel: 813-287-1960; email: bhasbrou@hdrinc.com

International: George H. Wood, CEP
tel: 919-441-0239; email: epi@interpath.com

Education/Professional Development: Cynthia Fridgen
tel: 517-355-3421; email: fridgenc@pilot.msu.edu

Academic Centers of Excellence Committee Co-Chairs: Cynthia Fridgen
tel: 517-355-3421; email: fridgenc@pilot.msu.edu

NEPA Working Group: Lance McCold
tel: 423-574-5216; email: mccoldln@ornl.gov

NEPA Presidential Awards: William J. Melton
tel: 208-528-2173; email: jim_melton@cpqm.saic.com

Corporate Working Group: Michael N. Zatz
tel: 202-862-1105; email: mzatz@icfkaiser.com

Utility Working Group: Richard Sternberg
tel: 703-907-5824; email: dick.sternberg@nreca.org

Internet Working Group: Geoffrey S. Elliott
tel: 970-627-5464; email: gelliott@rkymtnhi.com

Sustainable Development Working Group: Thomas R. Cuba
tel: 813-532-0709

Elections: Bruce Hasbrouck
tel: 813-287-1960; email: bhasbrou@hdrinc.com

1998-1999 Budget: Bruce Hasbrouck
tel: 813-287-1960; email: bhasbrou@hdrinc.com

Policy: Randall E. Schroeder
tel: 303-850-0930; email: 70702.2173@compuserve.com

MONTEVERDE

Ecology And Conservation of a Tropical Cloud Forest

This definitive guide to one of the most beloved ecotourist destinations in the world assembles a group of prominent researchers who present a broad introduction to the biology of Monteverde. Ecologists, tropical biologists, and natural historians will find this volume indispensable as will anyone who has ever been fascinated by the magnificent wonders of the cloud forest.

August 1999 560 pp.; 125 halftones, 80 line illus.
0-19-509560-X cloth \$130.00
0-19-513310-2 paper \$65.00

BIOLOGY OF BATS

Gerhard Neuweiler, *University of Munich, Germany*

Translated by Ellen Covey, *University of Washington*

Well adapted to numerous habitats, bats comprise almost one quarter of all species of mammals. In this introduction, Gerhard Neuweiler surveys the most current information available on the physiology, ecology, and phylogeny of bats. And the book features a detailed discussion of echolocation and describes numerous species from around the world.

June 1999 304 pp.; 127 linecuts
0-19-509950-8 cloth \$69.95
0-19-509951-6 paper \$35.00

ENVIRONMENTALISM FOR A NEW MILLENNIUM

The Challenge of Coevolution

Leslie Paul Thiele, *University of Florida*
This book provides a much-needed clarification and expansion of the goals of the environmental movement. Focusing on America, the author traces the long history of the movement and then examines in detail the current trend towards *coevolution*, which emphasizes the interdependence of humans and the environment.

April 1999 336 pp.
0-19-512410-3 \$35.00

THE OSTRICH FACTOR

Our Population Myopia

Garrett Hardin, Professor Emeritus at *University of California, Santa Barbara*
"No one feeds the intellectual fires of ecology's role in government better than Hardin. Rich in history, ethics, etymology, Hardin specializes in breaking the manacles of history, phrase and thought that seem to condemn us to the cheapening of people and the impoverishment of habitat through growth in human numbers. Hardin offers an exciting glimpse of ourselves at the moment and shows us all that history need not flow inevitably to chaos."—G.M. Woodwell, Director, *Woods Hole Research*

Center

"A learned, witty, and controversial book evaluating contemporary ethical assumptions regarding population planning and world population growth."—*Library Journal*

April 1999 176 pp.; 2 figures
0-19-512274-7 \$22.00

BUTTERFLIES THROUGH BINOCULARS

A Field Guide to the Butterflies of Eastern North America

Jeffrey Glassberg, President of the *North American Butterfly Association* and Past President of *Xerces Society*

This magnificent field guide is the latest addition to the exciting series that is revolutionizing the way we look at butterflies. Greatly expanding on *Butterflies Through Binoculars: The Boston-New York-Washington Region*—identified by *Defenders of Wildlife Magazine* as "the first to focus on net-less butterflying" and called "a clear winner" by the *Audubon Naturalist*—Glassberg here shows us how to find, identify, and enjoy all of the butterflies native to the eastern half of the United States and southeastern Canada.

April 1999 400 pp.; 900 color illus., & 23 b/w line illus.
0-19-510668-7 paper \$18.95

TROPICAL FOREST ECOLOGY

A View from Barro Colorado Island

Egbert Giles Leigh, Jr., *Smithsonian Tropical Research Institute*

This book considers three essential questions for understanding the ecological organization of tropical forests. How do they stay green with their abundance of herbivores? Why do they have such a diversity of plants and animals? And what role does mutualism play in the ecology of tropical forests? Beautifully written and abundantly illustrated, this book will appeal to a wide variety of scientists.

March 1999 264 pp.; 71 line illus.
0-19-509603-7 paper \$35.00

THE BIOLOGY OF LAKES AND PONDS

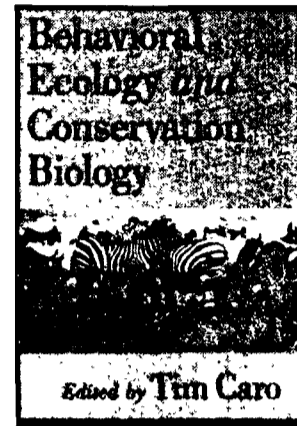
Christopher Bronmark and Lars-Anders Hansson, both at *University of Lund, Sweden*

This comprehensive textbook summarizes new approaches to the understanding of freshwater ecosystems and integrates these with traditional limnology. As well, it includes numerous lab experiments and a survey of lake and pond organisms.

December 1998 320 pp.; 98 illus.
0-19-854972-5 cloth \$85.00
0-19-854971-7 paper \$35.00

New from OXFORD

Recent books of interest



BEHAVIORAL ECOLOGY AND CONSERVATION BIOLOGY

Edited by Tim Caro, *Center for Population Biology*

Here, leading researchers explore conservation intervention programs and show how conservation-minded behavioral ecologists can apply their expertise to some of the most important questions we face today.

1998 480 pp.; 75 illus.
0-19-510489-7 cloth \$90.00
0-19-510490-0 paper \$55.00



A FIELD GUIDE TO THE MAMMALS OF CENTRAL AMERICA AND SOUTHEAST MEXICO

Written and illustrated by Fiona A. Reid
This extraordinary book is the first comprehensive field guide to the mammals of Central America and is extensively illustrated throughout, making it enjoyable for amateur naturalists and professionals.

1998 456 pp.; 62 illus.
0-19-506400-3 cloth \$55.00
0-19-506401-1 paper \$29.95

To order, or for more information, please write to:
OXFORD UNIVERSITY PRESS • 198 Madison Avenue, New York, NY 10016

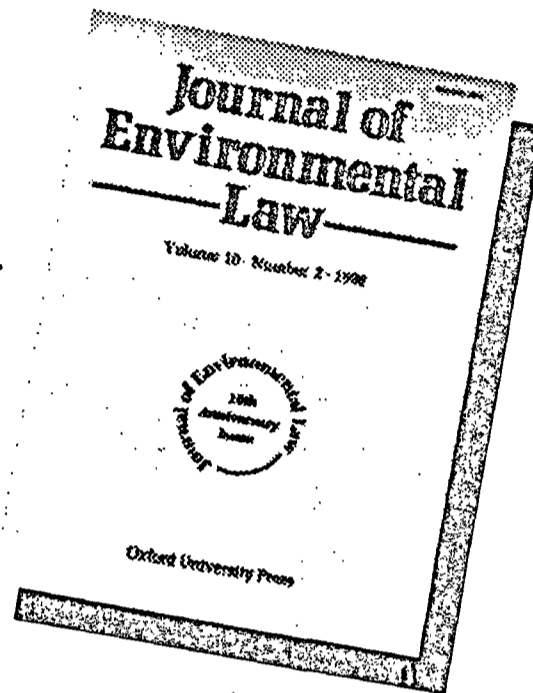
To order any book by credit card, call toll-free 1-800-451-7556.
Prices and publication dates are subject to change.

www.oup-usa.org

ONLINE IN
1999!

Journal of Environmental Law

www.oup.co.uk/envlaw



For over a decade the *Journal of Environmental Law* has encouraged innovative and sustained appraisals of current and emerging concepts, policies, and practice. It has tackled the range of subjects encompassed within environmental law from the more traditional fields of pollution control, waste management, and habitat protection, to the challenging new areas of biotechnology, regulation of hazardous substances, and international regimes for common natural resource.

To make this valuable resource even more useful, the *Journal of Environmental Law* is now fully online. All subscribers have free access to the online edition of the 1999 volume. If you are a personal subscriber, go to WWW.OUP.CO.UK/ENLAW and register for online access. Readers using library copies should ensure that the librarian has registered their institution. View the web page for more instructions.

Journal of Environmental Law, Volume 11, 1999 (2 issues)

Yes! I would like to subscribe to **JEL** at the rate below.

- Institutions: \$145/£80 Individuals: \$82/£46 UKELA/ICCET members: \$61/£34
 I am interested in subscribing; please send me a FREE sample copy for review.

Name _____

Address _____

City _____ State _____ Zip _____

(Please note:
£Sterling prices
apply in Europe. US\$
apply elsewhere.)

I enclose a check payable to Oxford University Press. EPFIL99

Please charge my Mcard/Visa/AmEx/Diners/JCB card (circle one) below.

Number: _____ Exp. Date: _____

Signature: _____

Return form to:

OUP Journals Marketing,
2001 Evans Road
Cary, NC 27513

Credit card and sample
orders can be placed by
phone/fax/e-mail. Call 800/
852 7323 (USA and Canada
only) or 919 677 0977. Fax
919 677 1714 or e-mail
jnlorders@oup-usa.org

OXFORD
UNIVERSITY PRESS

NATIONAL ASSOCIATION OF ENVIRONMENTAL PROFESSIONALS BOARD OF DIRECTORS

PRESIDENT

Andrew J. McCusker
MACKWORTH Environmental
3 Adams St
South Portland, ME 04106
tel: 207-767-0161
tel: 207-846-4152 (home)
fax: 207-767-4306
email: ajmccusker@aol.com

PRESIDENT ELECT

Bruce Hasbrouck
HDR Engineering Inc
5100 W Kennedy Blvd, #300
Tampa, FL 33609-1840
PH 813-287-1960 Home: 727-522-5344
Fax 813-282-2430
email: bhasbrou@hdrinc.com
(Expires 2000)

TREASURER

Craig Stanley
CS Limited
434 Big Sky Dr
Eiters PA 17319
tel: 717-932-2003
fax: 717-932-4409
email: cwstanley@worldnet.att.net
(Expires 2001)

SECRETARY

Helene K. Merkel
Horne Engineering Services Inc
2750 Prosperity Ave., Suite 450
Fairfax, VA 22031
tel: 703/641-1100
fax: 703/641-0440
email: hmerkel@horne.com
Other: Permanent Conference Committee chair
(Expires 1999)

IMMEDIATE PAST PRESIDENT

James A. Roberts, PhD, CEP
Geographer and Natural Resource Planner
540 Morris Way
Sacramento, CA 95864
tel: 916/483-1564
fax: 916/484-7124
email: gems@ns.net
Other: Chair International Committee

BOARD MEMBERS

John R. Daugherty, PhD
NOAA/NSSL
3450 Mitchell Lane, FL3, Room 2037
Boulder, CO 80301-2260
TEL: 303/497-6875
FAX: 303/497-6930
email: johnd@ucar.edu
(Expires 2000)

Kara Downey, QEP
Arizona Elec. Power Cooperative
PO Box 670
Benson AZ 85602
PH: 520-586-5158
Fax: 520-586-5566
email: kdowney@aepnet.org
(Expires 1999)

Cynthia Fridgen, PhD
Michigan State University
Resource Dev Dept,
308 Natural Resources Bldg
East Lansing MI 48824-1222
tel: 517-355-3421
fax: 517-353-8994
email: fridgenc@pilot.msu.edu
(Expires 2001)

Michael Herbaugh
Office of Inspector General, DOD
99 MacGregor Ridge Rd
Stafford VA 22554
tel: 703-604-9294
fax: 703-604-9204
email: raisinb@fls.infi.net
(Expires 2001)

Jim Melton
SAIC Idaho Falls Office
545 Shoup Ave
Idaho Falls ID 83401
tel: 208-528-2173
fax: 208-535-7520
email: jim_melton@cpqm.saic.com
Other: Committee: Utility Working Group,
NEPA Awards committee
(Expires 2000)

Dennis R. Poulsen, CEP
CA Steel Industries, Inc.
14000 San Bernardino Avenue
P.O. Box 5080
Fontana, CA 92335
tel: 909/350-5973
fax: 909/350-6162
email: dpoulsen@californiasteel.com
(Expires 1999)

John Schultheis, CEP
Nimmo & Company
P. O. Box 536
Swannanoa, NC 28778-0536
tel: 828-686-4336
fax: 828-686-4630
email: nimmo@ioa.com
(Expires 2001)

James A. Spangler
Barrett Kays and Associates
224 Fayetteville St. Mall, Suite 100
P.O. Box 2979
Raleigh, NC 27602-2979
tel: 919/828-1903
fax: 919/828-0365
email: jaspangler@aol.com
(Expires 2001)

George Wood
Environmental Professionals, Inc.
P.O. Box 3368
Kill Devil Hills, NC 27948
TEL: 252/441-0239
FAX: 252/441-0721
e-mail: epi@interpath.com
Other: Committee: International; Bus Plan
Comm; NEPA/ISO/SD Ad hoc Committee,
(Expires 1999)

EX-OFFICIO

Robert A. Michaels, PhD, CEP
RAM TRAC Corporation
3100 Rosendale Road
Schenectady, NY 12309-1510
tel: 518/785-0976
fax: 518/785-0976
email: 76517.747@compuserve.com

EX-OFFICIO

John H. Perkins, PhD
Editor-in-Chief, *Environmental Practice*
The Evergreen State College
Olympia, WA 98505
tel: 360/866-6000 x6503
fax: 360/866-6794
email: perkinsj@elwha.evergreen.edu

NATIONAL OFFICE

Donna Carter
6524 Ramoth Dr
Jacksonville FL 32226-3202
904-251-9900 or 888-251-9902
Fax 904-251-9901
email: naep@ilnk.com

CHAPTER REPRESENTATIVES

Alaska

Carl H. Harmon
Chugach Electric Associates, Inc.
P.O. Box 196300
Anchorage, AK 99519-6300
tel: 907/563-7494
fax: 907/562-0027

California Co-Chairs

Karen Frye
Tetra Tech
180 Howard Street Ste 250
San Francisco CA 94105
tel: 415-974-1221
fax: 415-974-5914
email karen.frye@tetrateck.com

David Full

ESA
225 Bush St, #1700
San Francisco CA 94104
tel: 415-896-5900
fax: 415-896-0332
email: dfull@esassoc.com

Chesapeake

Norman W. Arnold, CEP, NAEP
Fellow
988 Saigon Road
McLean, VA 22102-2119
tel: 703/827-8368
fax: 703/506-8509
e-mail: normamold@aol.com

Florida

Debby Valin
FI DEP
13 E Melbourne Ave
Melbourne FL 32901
tel: 407-984-4800
fax: 407-984-4816
email: valin_d@orl1.dep.state.fl.us

Hawaii

Margo S. Stahl, CEP
U.S. Fish & Wildlife Service, #6307
P.O. Box 50167, 300 Alamoana Blvd
Honolulu, HI 96850
tel: 808/541-2749
fax: 808/541-3470
email: margo_stahl@mail.fws.gov

Illinois

Greg Gocek
Enviro Capital
5514 Glenview Rd
Downers Grove IL 60515-4422
tel: 630-968-7845
fax: 630-968-0441
email: gggman@worldnet.att.net

Indiana

Clarence Dillon
5719 S Roger
Bloomington IN 47403-4637
tel: 812-824-6911
email: cedillon@kiva.net

Metro Washington, D.C.

Catharine Swan
3503 S Stafford St
Arlington VA 22206
tel: 703-671-1232
fax: 703-883-2735
email: swans@erols.com

Michigan

Robert Anderson, PG
CTI & Associates
12482 Emerson Dr
Brighton MI 48116
tel: 248-486-5100
fax: 248-486-5050
email: ctia@voyager.net

Mid-America

Fred Pinkney, PhD
Burns & McDonnell
9400 Ward Parkway
Kansas City, MO 64114
tel: 816/822-3304
fax: 816/333-3690
e-mail: fpinkne@burnsmcd.com
Other: President: Mid-America Chapter
Co-chair NAEP Chapters Committee
Chair 1999 Conference Committee

New England

Andrew J. McCusker
MACKWORTH Environmental
3 Adams St
South Portland, ME 04106
tel: 207-767-0161
tel: 207-846-4152 (home)
fax: 207-767-4306
email: ajmccusker@aol.com

New Jersey

Thomas K. Uzzo
Whitestone Env. Conf. Mgmt.
776 Mountain Blvd
Watchung, NJ 07061
tel: 908/668-7777
fax: 908/754-5936
email: mdlondon@aol.com

North Carolina

David A. Griffin, CEP
URS Greiner, Inc.
6200 Falls of Neuse Road, Suite 101
Raleigh, NC 27609
tel: 919/876-2760
fax: 919/876-5479
email: dgriffin@ursgreiner.com

Pennsylvania

Karyn Carl
McCormick, Taylor & Assoc Inc
6380 Flank Dr, #300
Harrisburg PA 17112
tel: 717-540-6040
fax: 717-540-6049
email: mta@paonline.com

Philadelphia Region

Alan Kaufman
45 Meadows Lane
Haverford PA 19041
tel: 610-527-8634
fax: 610-876-7847
email: kaufal@aol.com

Rocky Mountain

Carl Eriksson
Realistic Environmental Solutions
48 Blue Bel Dr
Evergreen CO 80439
tel: 303-679-1230
fax: 303-679-0564
email: cleriks0@sprynet.com

Texas

Carl E. Masterson
Houston-Galveston Area Council
P.O. Box 22777
Houston, TX 77227
tel: 713/993-4561
fax: 713/993-4503

INCLUDED IN THIS ISSUE:

POINTS OF VIEW

- J. H. Perkins* EDITORIAL: Professional Work and Power in Environmental Practice
- A. J. McCusker* FROM THE PRESIDENT OF NAEP: Environmental Professionals in Practice
- M. C. Bruner* GUEST EDITORIAL: The Risks of Recycling
- T. R. Cuba* GUEST EDITORIAL: Reflections on Sustainable Development
- S. Campbell* GUEST EDITORIAL: What's in a Name?

NEWS & INFORMATION

- D. Steele* The Western Regional Air Partnership: Successor to the Grand Canyon Visibility Transport Commission
- N. Pfeffer* Benefit-Cost Analysis of the RECLAIM Program
- T. R. Cuba* Interactive Ethics
- G. F. Kelman* NAEP Committee and Working Group News
- B. Hasbrouck* NAEP Chapter News

FEATURES & REVIEWS

- B. E. Tonn & J. H. Peretz* RESEARCH ARTICLE: Institutional Problems Facing Environmental Decision Makers in Local, State, and Other Subnational Governments
- J. P. Doub* COMMENTARY: A Proposed Method of Professional Practice for Addressing Wetland Impacts in Environmental Impact Statements
- T. B. Rainey* ENVIRONMENTAL REVIEW: Managing the Kuybyshev Reservoir in the New Russia: A Status Report

Environmental Practice

Oxford University Press
2001 Evans Road
Cary, North Carolina 27513

Bulk Rate U.S. Postage PAID Permit 116 Lawrence, KS

Address Service Requested