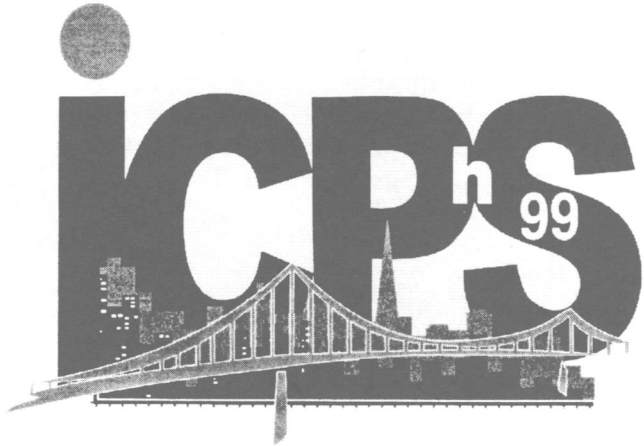


14th International Congress of Phonetic Sciences  
San Francisco, CA  
August 1st-7th, 1999



**CALL FOR PAPERS**

The 14th International Congress of Phonetic Sciences (ICPhS99) invites contributed papers in the following subject areas:

- |                               |                                |
|-------------------------------|--------------------------------|
| A. Acoustics                  | J. Phonology                   |
| B. Auditory Mechanisms        | K. Production                  |
| C. Clinical Phonetics         | L. Second Language Acquisition |
| D. First Language Acquisition | M. Sociophonetics              |
| E. Forensic Phonetics         | N. Sound Change                |
| F. History of Phonetics       | O. Speech Technology           |
| G. Neurophonetics             | P. Universals/Typology         |
| H. Perception                 | Q. Voice Quality               |
| I. Phonetics Pedagogy         | R. Other                       |
| S. Prosody                    |                                |

***Deadline for abstracts: 15th October 1998***

Further information may be obtained from:

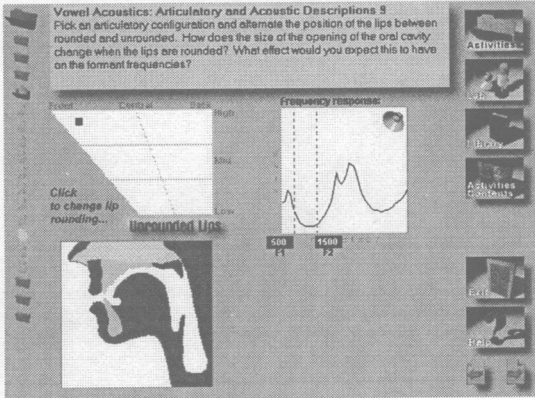
ICPhS99 Secretariat  
University of California  
Department of Linguistics  
1203 Dwinelle #2650  
Berkeley CA 94720-2650  
USA

*e-mail: [icphs99@trill.berkeley.edu](mailto:icphs99@trill.berkeley.edu)*

*www: <http://trill.berkeley.edu/ICPhS>*

NEW!

from: **SENSIMETRICS**



**Speech Production and Perception I: An Interactive Multimedia Course** provides a non-mathematical introduction to the basic concepts of acoustic phonetics and speech science. The course cultivates genuine understanding of these concepts through personal interaction and experience, using hundreds of interactive models and simulations. The course was developed with major support from the National Institutes of Health.

The course has been created for undergraduate students studying Speech and Hearing Science, Communication Disorders, Linguistics and Phonetics. Computer Science and Electrical Engineering students interested in speech transmission and processing will also find the course stimulating and useful. Its price (\$95) is about the same as a good textbook.

The course incorporates its own state-of-the-art graphic interface, including custom-designed high-speed digital signal processing and many full-color animated screen displays. The combination of efficient, innovative code and a sophisticated user interface allows students easy access to course activities and resources.

speech production and perception - I  
CD-ROM \$95

**SPP1**

- [ spectrograms ]
- [ vowel acoustics ]
- [ consonant acoustics ]
- [ speech perception ]
- [ vowel perception ]

Developed over three years by teachers of speech science and experts in phonetics and speech production, working with a team of experienced writers, artists, and programmers.

Designed to enable students to acquire an intuitive understanding of the correspondence between sound, spectrum and articulation.

Interactive use of the computer for dynamic, experience-based learning with self- or teacher-guided instruction.

Already purchased by more than 100 colleges and universities.

A detailed 8-page full-colour brochure is available on request from:

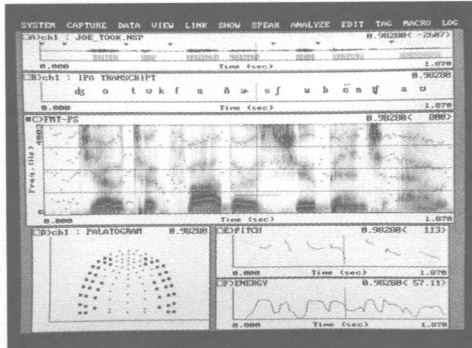
[products@sens.com](mailto:products@sens.com)

Write, fax or telephone to learn how to obtain an approval copy.

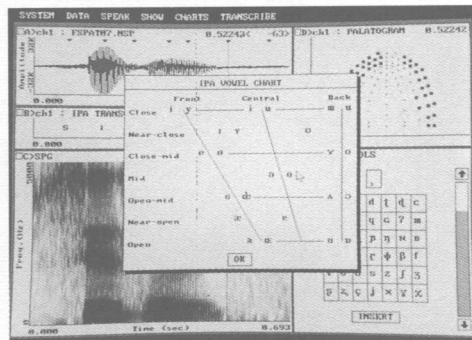
Please inquire about volume discounts.

SENSIMETRICS Corporation  
26 Landsdowne Street  
Cambridge, MA 02139  
617-225-2442  
FAX: 617-225-0470  
<http://www.sens.com/sppi.html>

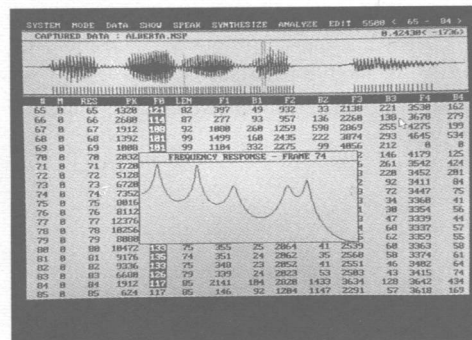
# CSL offers the right tools for acoustic phoneticians.



The CSL contains extensive speech analysis capabilities. Files acquired with Kay's Palatometer allow physiological data to be compared to acoustic results.



The IPA Transcription Tutorial is presented in a multimedia environment. When students are unsure of proper transcription, a vowel or consonant chart can be displayed which speaks each phoneme and provides a spectrographic display with a click of the mouse.



The LPC numerical editor allows users to mark columns of data (e.g., specific formants or  $F_0$  values) for quick, precise editing. A variety of functions is available.

CSL™/Computerized Speech Lab offers extensive analysis formats, editing functions, and other core capabilities that make it the instrument of choice for acoustic phoneticians. The CSL is a completely integrated system. It includes both hardware and software and works on a host PC personal computer. Some exciting features and options include:

## Features

- Dual-channel data acquisition with CD-quality audio playback fidelity (four-channel option available)
- Extensive analysis formats including spectrograms, waveforms, LPC (slices and formant history), pitch, energy, and more
- On-screen IPA transcription tool with all 196 characters including diacritics
- Integration with Palatometer linguopalatal contact patterns to link phoneme production and acoustic results
- Extensive commands for editing, digital filtering, warping, splicing, mixing, and appending speech samples for precise manipulation

## Programs for Research and Teaching

- Speech synthesis (LPC-derived, residual-driven, and pitch-synchronous) with both graphic and numerical editing of formant frequencies, bandwidths, and fundamental frequency
- Multimedia IPA teaching software with each spoken phoneme analyzed spectrographically and with built-in exercises for student practice
- Phonetic database offers 82 MB of speech sampled from 25 languages with over 1,870 samples on CD-ROM
- Real-time options including pitch, spectrograms, and LPC-based spectra; ideal for classroom demonstrations or lab exercises

Kay offers competitive package pricing and excellent support for the CSL. Call 1-800-289-5297 for more information.

**KAY** Kay Elemetrics Corp.  
2 Bridgewater Lane  
Lincoln Park, NJ 07035-1488 USA  
TEL: 1-800-289-5297 (In USA and Canada),  
(973) 628-6200 • FAX: (201) 628-6363

CSL™ is a trademark of Kay Elemetrics Corp.

(This page may be photocopied)

# International Phonetic Association

## Subscription Form

The subscription to the Association is UK£13 (or US\$25) per annum. Payment can be made by cheque or by credit card using the form below. Life membership can be obtained by paying the equivalent of 15 years' annual subscription (UK£195 or US\$375). Student membership for one year is UK£6.50 (or US\$12.50) when accompanied by a letter from the student's department certifying full-time student status. For an institution or library, the subscription to JIPA is UK£25 (US\$45).

### Member Information:

Please enrol me as a member of the International Phonetic Association, and send me the Journal and other publications as they are issued. *Please type or use BLOCK CAPITALS.*

Title: Prof./Dr./Mr./Ms./Mrs./Miss

Surname: .....

Other Names: .....

Postal Address:

Institutional Address (if different):

.....  
.....  
.....  
.....  
.....

.....  
.....  
.....  
.....  
.....

Telephone: .....

Fax: .....

E-mail Address: .....

Nationality: .....

Profession: .....

University Degrees or other distinction: .....

Signature: .....

Date: .....

Contact information will be published in JIPA unless you make a request to the contrary. Please indicate if you do NOT wish any of the following to be published.

DO NOT PUBLISH:  E-mail  Telephone  Fax

### Payment:

I enclose a cheque, made payable to the International Phonetic Association, for UK£13/US\$25\* being my subscription for the year 1998. *or:*

Please charge my Access / Visa / Mastercard / Eurocard (delete as appropriate) with the sum of UK£13\* being my subscription for the year 1998. (Post or fax this information.)

*\* if paying life, student or institutional membership, please adjust this value.*

Card No: .....

Expiry Date: .....

Signature: .....

Date: .....

Name and Address as registered with the credit card company:

.....  
.....  
.....  
.....

Send this form to:

*Treasurer, International Phonetic Association  
Centre for Language & Communication Studies  
Arts Building, Trinity College  
Dublin 2, Ireland  
Fax: + 353 1 677 2694*

# International Phonetic Association

## General Information

For general information on the International Phonetic Association contact:

Secretariat, International Phonetic Association  
Department of Linguistics  
University of Victoria  
Victoria, B.C. V8W 3P4  
Canada

Tel: (+1) 250 721-7424  
Fax: (+1) 250 721-7423  
E-mail: [esling@uvic.ca](mailto:esling@uvic.ca)

## IPA on the Web

The IPA also maintains a site on the World Wide Web which provides information on the International Phonetic Alphabet, on available phonetic fonts and sound recordings, on subscription to the Association, and on examinations in phonetics. It also has links to other sources of information on phonetics. The address is:

<http://www.arts.gla.ac.uk/IPA/ipa.html>

## Membership Services and Publications

The subscription to the Association is £13.00 (or US\$25.00) per annum, which should be sent each January to the Treasurer, International Phonetic Association, Centre for Language and Communication Studies, Trinity College, Dublin 2, Ireland or credited to U.K. Postal Giro Account No. 57 009 4208. Life membership is obtainable by paying the equivalent of fifteen years' annual subscription (£195.00 or US\$375.00). A membership application form is printed opposite.

Members receive two issues of the *Journal* each year. Back issues of the *Journal* (1971–1996) may be obtained from the Treasurer at the following prices:

1971–1974	£2.00 per volume	(to members £1.50)
1975–1976	£3.00 per volume	(to members £2.50)
1977–1978	£4.00 per volume	(to members £3.00)
1979–1982	£6.00 per volume	(to members £4.50)
1983–1986	£8.00 per volume	(to members £6.00)
1987–1991	£20.00 per volume	(to members £10.00)
1992–	£25.00 per volume	(to members £13.00)

# Journal of the International Phonetic Association

## NOTES FOR CONTRIBUTORS

**Policy.** The *Journal of the International Phonetic Association* (formerly entitled *Le Maître Phonétique*), is concerned with all aspects of the theory, description, and use of phonetics and phonology. Contributions are subject to review, and to the Editor's final decision as to publication. The primary language of the *Journal* is English, though contributions in other languages of wide scholarly currency, such as French, German, and Russian will be accepted. Contributions in English may use either British or American standard spelling and punctuation.

**Manuscript style.** Contributors are encouraged to submit their text, if possible, both in printed form and as a computer file. Printed contributions should be submitted in typewritten or computer printout form, in double spacing with wide margins, printed on one side of the sheet only. Contributions in the form of computer files should be submitted either on diskette or by attachment to an e-mail message to the editor. Most standard word-processing formats (for either PC or Macintosh) are supported. Text should use 12 pt. Times font (in addition to fonts used for special symbols), and should contain a *minimum* of formatting as to page layout: please do not adjust line-spacing, page breaks, indentations, etc.

The text should use two levels of headings: (1) Main headings placed above the paragraph, numbered, and formatted flush left, bold; (2) subheadings, also placed above the paragraph, unnumbered, and formatted flush left, italic. Contributors are asked to suggest a running title of not more than 50 characters, including spaces. Acknowledgements (with a centred bold heading) follow the text and precede the references. Tables should be included in the text at the appropriate location. The style conventions of the *Journal* should be followed wherever possible, and the Editor reserves the right to alter contributions so that they conform to house style.

**Abstracts.** Contributions should include an abstract of between 50 and 200 words. Contributions in languages other than English should be accompanied by an abstract in English.

**Footnotes and references.** Footnotes should be avoided as far as possible. Citations are to be made *in the text* by giving in parentheses the name of the author and the year of publication, and where relevant the page(s) referred to: e.g. "... (Jones 1963) ...", or "... Jones (1983: 453) ...". Where essential, footnotes should be indicated in superscript consecutively throughout the text, and collected as a separate sheet at the end of the manuscript. All works referred to should be listed at the end of the article, using the following format:

### References

- ESLING, J.H. (1996). Pharyngeal consonants and the aryepiglottal sphincter. *JIPA* 26, 65–88.
- O'CONNOR, J. D. & ARNOLD, G. F. (1973). *Intonation of Colloquial English*. Second edition. London: Longman.
- SAMPSON, G. (1987). Probabilistic models of analysis. In Garside, R., Leech, G. & Sampson, G. (editors), *The Computational Analysis of English*, 30–41. London: Longman.

**Transcriptions and figures.** Phonetic transcriptions should make use of the symbols and conventions of the Association's alphabet in its latest revision. Contributions in the form of computer files should use a phonetic font modelled on 12 pt. Times: preferably either SIL Doulos IPA93 (freely available for both Windows and Macintosh computers via the Internet at <ftp://ftp.sil.org/fonts>) or IPA Kiel, available for purchase from Linguist's Software, Inc., PO Box 580, Edmonds, WA 98020-0580, USA.

Figures may be submitted either in computer file form, using one of the standard drawing programs for microcomputer, or as clear originals on paper. In either case they should be drawn to a standard which will allow them to be reproduced clearly in photo-reduction.

**Proofs and offprints.** Proofs will be sent to the author (or their nominee), who will be expected to correct them and return them to the Editor, by airmail where appropriate, within ten days of receipt. The Editor may also confer with authors by e-mail; please supply an e-mail address if available. Upon publication, 25 copies of a contribution will be supplied to the author free of charge; further offprints may be purchased at cost.

**Submission of manuscripts.** Contributions should be sent to Martin Barry, Editor of *JIPA*, Department of Linguistics, The University of Manchester, Oxford Road, Manchester, M13 9PL, UK. E-mail: [martin.barry@man.ac.uk](mailto:martin.barry@man.ac.uk)