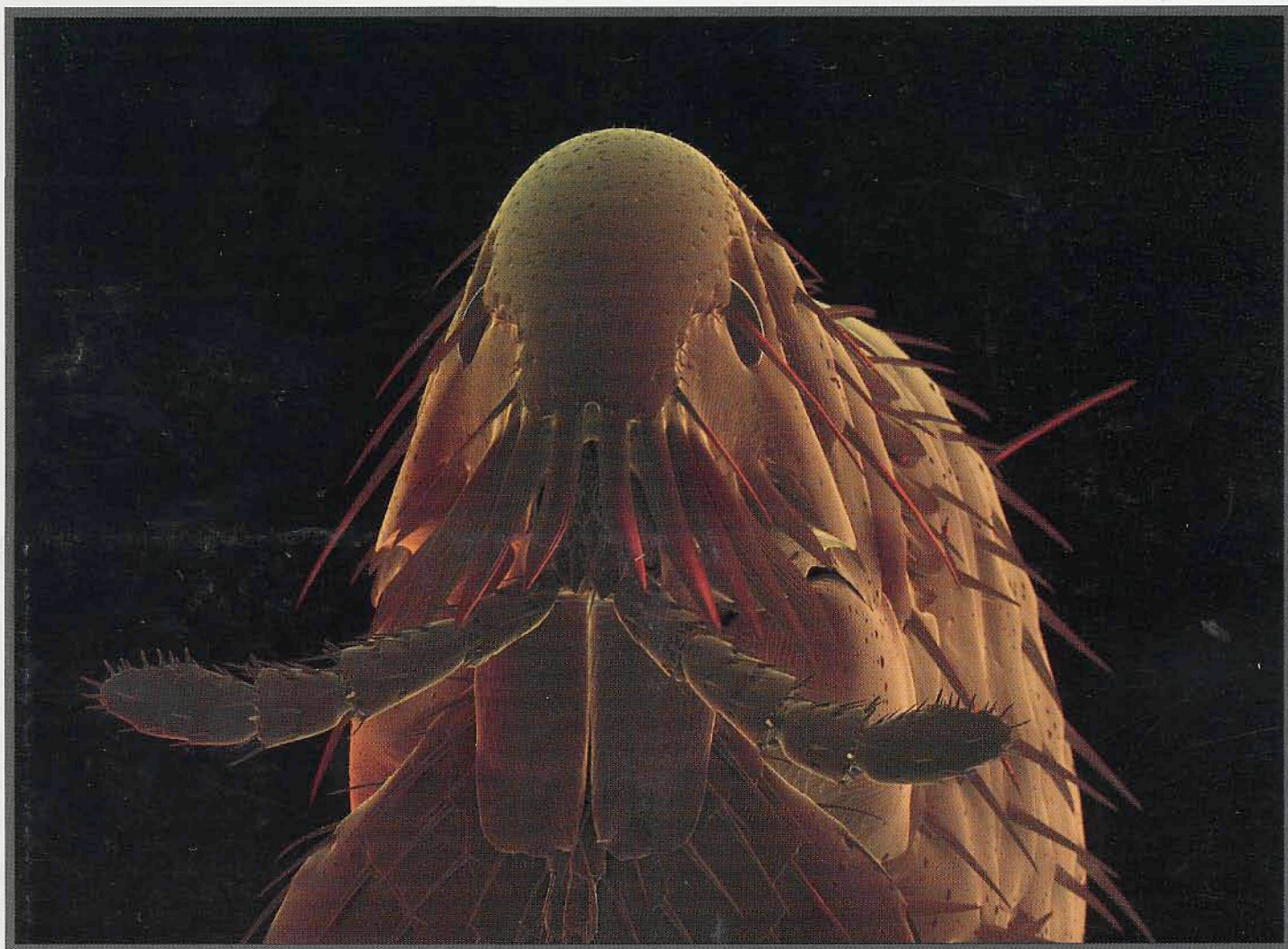


MICROSCOPY TODAY

SEPTEMBER 1996

ISSUE #96-7



A Site Worth Seeing

SEMsational Products

Go To: <http://www.peo.philips.com/semsational/>

SEMsational

Scanning Electron Microscopy with a Difference...

XL20
Precision tilt eucentric 20 mm x 20 mm stage and a resolution down to 4 nm make the XL20 ideal for investigations and small samples.




XL40
For large sample analysis, from IC wafers to high-quality coated materials. XL40's features include a 150 mm motorized stage and 45° tilting of large planar specimens.



XL30
Chamber with many free ports, a 50 x 50 mm tilt eucentric stage and full system automation for increased analytical throughput, including EDX, WDX and EBSP.



XL40FEG
A high-tech blending of the XL40 (above) with FEG resolution and stability make this instrument particularly suited for analytical applications.




XL30FEG
Same as the XL30 plus a combination of high resolution and uniquely high and stable current for outstanding analytical performance.



XL-Analytical
The customized embedding of EDX in any type XL. A common software environment and consistent user interface allows generation of high-level automation packages.




XL30ESEM-FEG
Featuring a patented gaseous secondary electron detector system, specimen examination is by means of a FEG electron beam in an exceptionally high pressure environment, compatible with hydrated samples.



XL50 FEG-DRT
This advanced instrument combines a FEG electron source with a 200 x 200mm, 5-axis movement stage. Average stage accuracy is within 1.5 microns across an 8" wafer.



XL??
Coming soon...



Philips XL Series SEMs reflect the perfect blend of elegant hardware and sophisticated software. System modularity and a choice of electron sources (tungsten; lanthanum hexaboride (LaB6), field emission (FEG)), enable a basic instrument to be configured to specific requirements. Menu-driven point-and-click mouse

control contributes to unprecedented user friendliness. Take a look at the **Philips XL Series SEMs**. You'll find they're simply **SEMsational!**

Philips Electronic Instruments Co.
85 McKee Drive, Mahwah, NJ 07430

Fax: 201-529 2252, Telephone: 201-529 3800
E-mail: marcom@eo.ie.philips.nl
Website: www.peo.philips.com



PHILIPS

Let's make things better.