

THE JOURNAL OF MENTAL SCIENCE



BY AUTHORITY OF
THE ROYAL MEDICO-PSYCHOLOGICAL ASSOCIATION

MANAGING EDITOR
G. W. T. H. FLEMING

IN COLLABORATION WITH
Douglas McRae Lionel S. Penrose Alexander Walk

AND WITH THE ASSISTANCE OF

E. D. Adrian	C. J. McCarthy
F. C. Bartlett	P. K. McCowan
S. M. Coleman	A. Meyer
C. J. C. Earl	A. A. W. Petrie
F. L. Golla	W. M. Scott
E. G. Holmes	E. T. O. Slater
W. Stephenson	

LONDON
J. & A. CHURCHILL, LTD.

Published Six times Yearly, price Six Shillings net.

THE JOURNAL OF MENTAL SCIENCE

Communications on general editorial matters, including MSS. for publication, books for review and other printed matter, and communications regarding the *Epitome* section, including journals to be abstracted, should be sent to the **Managing Editor, Barnwood House, Gloucester.**

Communications and inquiries regarding sales should be addressed to the Publishers, **Messrs. J. & A. CHURCHILL, Ltd., 104, Gloucester Place, Portman Square, London, W.1;** and those regarding Advertisements to **Messrs. S. FRETWELL & Co., 57 and 59, Ludgate Hill, London, E.C.4.** 'Phone: City 4579.

THE ROYAL MEDICO-PSYCHOLOGICAL ASSOCIATION

PUBLICATIONS

From MESSRS. ADLARD & SON, LTD.,
21 Bloomsbury Way, London, W.C. 1.

- "**The Clinical Study of Mental Disorders.**" By J. R. LORD, *C.B.E.*, M.D., F.R.C.P.E.
Price 6/-. Postage 4d.
- The Charter and Bye-Laws of the Association.** Price 1/-. Postage 1d.
- Engraved Book-Plate of the Association.** Price 1/-. Postage 1d.
- "**The State Registration of Mental Nurses.**" Part II. Price 6d. Postage 1d.
- Enquiry (History) Form**, supplied in three sizes: (1) 16 pp., 9 $\frac{1}{4}$ " x 6 $\frac{1}{4}$ ", @ 23/- per 100; (2) 8 pp., 12 $\frac{3}{4}$ " x 8", @ 20/- per 100; (3) 4 pp., 16" x 10", @ 12/- per 100. Carriage paid.
- Card of Practical Instruction:** 3/3 per 50, 6/- per 100, including postage.

From MESSRS. J. & A. CHURCHILL, LTD.:

- Catalogue of the Library of the Royal Medico-Psychological Association.** 1928.
Price 2/-. Post free.

From BAILLIÈRE, TINDALL & COX:

- "**Handbook for Mental Nurses.**" 7th edn. 1923. Price 6/- net.
- "**Manual for Mental Deficiency Nurses.**" 1931. Price 6/- net.
- "**Occupational Therapy Brochure.**" 1938. Price 1/-.

From the SECRETARY, 11 Chandos Street, London, W. 1:

- "**Regulations and Rules for the Examinations for the Certificates of Proficiency in Mental Nursing and in Nursing Mental Defectives.**" Price 1/-.
Postage 1d.
- "**Syllabuses for the Examinations for the Certificates of Proficiency in Nursing Mental Defectives.**" Price 2d. each. Postage $\frac{1}{4}$ d.
- Examination Papers, 1928-38** (reprinted). Price 1/6. Postage 1d.

Made and printed in Great Britain by Adlard & Son, Ltd., 21 Bloomsbury Way, W.C. 1.

MENTAL HOSPITALS, INSTITUTIONS, HOMES, ETC.

ST. ANDREW'S HOSPITAL

FOR MENTAL DISORDERS, NORTHAMPTON

FOR THE UPPER AND MIDDLE CLASSES ONLY

President: THE MOST HON. THE MARQUESS OF EXETER, K.G., C.M.G., A.D.C.

Medical Superintendent: THOMAS TENNENT, M.D., M.R.C.P., D.P.H., D.P.M.

This Registered Hospital is situated in 130 acres of park and pleasure grounds. Voluntary patients, who are suffering from incipient mental disorders or who wish to prevent recurrent attacks of mental trouble, temporary patients, and certified patients of both sexes are received for treatment. Careful clinical, bio-chemical, bacteriological, and pathological examinations. Private rooms with special nurses, male or female, in the Hospital or in one of the numerous villas in the grounds of the various branches can be provided.

WANTAGE HOUSE

This is a Reception Hospital in detached grounds with a separate entrance, to which patients can be admitted. It is equipped with all the apparatus for the complete investigation and treatment of Mental and Nervous Disorders by the most modern methods; insulin treatment is available for suitable cases. It contains special departments for hydrotherapy by various methods, including Turkish and Russian baths, the prolonged immersion bath, Vichy Douche, Scotch Douche, Electrical baths, Plombières treatment, etc. There is an Operating Theatre, a Dental Surgery, an X-Ray Room, an Ultra-Violet Apparatus, and a Department for Diathermy and High-Frequency treatment. It also contains Laboratories for biochemical, bacteriological, and pathological research. Psychotherapeutic treatment is employed when indicated.

MOULTON PARK

Two miles from the Main Hospital there are several branch establishments and villas situated in a park and farm of 650 acres. Milk, meat, fruit and vegetables are supplied to the Hospital from the farm, gardens, and orchards of Moulton Park. Occupational therapy is a feature of this branch, and patients are given every facility for occupying themselves in farming, gardening and fruit-growing.

BRYN-Y-NEUADD HALL

The seaside house of St. Andrew's Hospital is beautifully situated in a Park of 330 acres at Llanfairfechan, amidst the finest scenery in North Wales. On the North-West side of the Estate a mile of sea-coast forms the boundary. Patients may visit this branch for a short seaside change or for longer periods. The Hospital has its own private bathing house on the seashore. There is trout-fishing in the park.

At all the branches of the Hospital there are cricket grounds, football and hockey grounds, lawn tennis courts (grass and hard courts), croquet grounds, golf courses, and bowling greens. Ladies and gentlemen have their own gardens, and facilities are provided for handicrafts, such as carpentry, etc.

For terms and further particulars apply to the Medical Superintendent (Telephone No. 2356 and 2357 Northampton), who can be seen in London by appointment.

HEIGHAM HALL

NORWICH.

Private Home for the care and treatment of a limited number of Ladies and Gentlemen suffering from Nervous and Mental Illness.

About two and a half hours from London by express train, L.N.E.R., and in connection with the Midlands by Midland and Great Northern Joint Line.

The mansion, surrounded by 14 acres of well-wooded grounds, is furnished as a private residence, and nothing suggests confinement, the safety of patients being ensured by a large staff of experienced nurses. Any modern therapeutic measures can be undertaken in suitable cases. Private Suites of Rooms with special nursing available.

Seaside quarters are available when desired, and all amusements conducive to recovery are provided. The Chaplain conducts service every Sunday, and patients attend the Parish Church.

Voluntary patients, temporary patients, and patients under certificates are admitted for treatment.

FEES: from 4 guineas a week upwards according to requirements. Vacancies occasionally exist at reduced rates for ladies and gentlemen on the recommendation of the patient's own physician.

Apply to Dr. J. A. SMALL.

Telephone: NORWICH 80.

Telegrams: "SMALL, 80 NORWICH."

MENTAL HOSPITALS, INSTITUTIONS, HOMES, ETC.

CHEADLE ROYAL HOSPITAL, Cheadle, Cheshire.

This REGISTERED HOSPITAL, with a SEASIDE BRANCH at Colwyn Bay, N. Wales, is for the treatment and care of those of the Upper and Middle Classes suffering from MENTAL and NERVOUS DISEASES.

The Hospital is governed by a COMMITTEE, appointed by the TRUSTEES of the Manchester Royal Infirmary.

In addition to the Main Building there are separate villas. Extensive grounds. Hard and grass tennis courts, cricket and croquet grounds, and a court for badminton. There are also wireless installations. Golf may be had within easy distance. Occupational Therapy.

VOLUNTARY, TEMPORARY AND CERTIFIED PATIENTS received.

The Hospital is nine miles from Manchester, 50 minutes by rail from Liverpool, and 3½ hours from London.

For terms and further particulars apply to the Medical Superintendent.

Telephone: Gatley 2231 (3 lines).

CHISWICK HOUSE Phone: PINNER 234 PINNER, MIDDLESEX

A Private Hospital for the Treatment and Care of Mental and Nervous Illnesses in Both Sexes.

A modern country house, 12 miles from Marble Arch, in attractive and secluded surroundings. Fees from 10 guineas per week inclusive.

Cases under certificate, Voluntary and "Temporary" Patients received for treatment.

DOUGLAS MACAULAY, M.D., D.P.M.

FENSTANTON, CHRISTCHURCH ROAD, STREATHAM HILL, S.W. 2.

A Private Home for the Care and Treatment of a limited number of Ladies with Mental and Nervous Disorders. Certified, Temporary and Voluntary Patients received.

Large Mansion with 12 acres of ground. Home-like surroundings.

(See *Medical Directory*, p. 2350.)

Apply Dr. MADELINE LOCKWOOD, Resident Physician. Telephone: Tulse Hill 7181.

DR. BINSWANGER SANATORIUM BELLEVUE KREUZLINGEN

SWITZERLAND

for Nervous and Mental Cases

as well as all kinds of addiction. Insulin shock treatment.

Physician in charge: Dr. LUDWIG BINSWANGER

Prospectus on application

COOKSHAYES MORETONHAMPSTEAD, DEVON

A Nursing Home for the individual treatment, on modern psychological lines, of a limited number of cases of NEUROSIS, PSYCHONEUROSIS and the ADDICTIONS.

The home stands in a beautiful part of England, a country-house atmosphere is maintained and there is every facility for indoor and outdoor recreation.

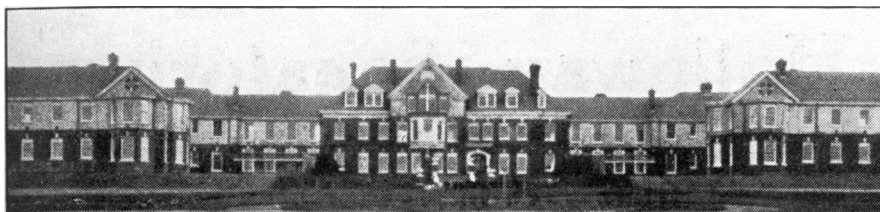
Fees 5-12 guineas weekly.

Tel.: Moretonhampstead 346.

Apply RESIDENT PHYSICIAN,

L. C. F. CHEVENS, M.R.C.S., L.R.C.P., D.P.M.

MENTAL HOSPITALS, INSTITUTIONS, HOMES, ETC.



ROOKSDOWN HOUSE, NEAR BASINGSTOKE, HANTS

FOR THE RECEPTION AND TREATMENT OF
NERVOUS AND MENTAL ILLNESS.

A Superior, Modern, and Attractive Building, situated in a charming and bracing locality, 400 ft. above sea-level.

Extensive pleasure grounds, with croquet, tennis, bowling, and putting greens. Occupational, Light, and Hydro-Therapy.

ONE HOUR RAIL JOURNEY FROM LONDON.

Ladies and Gentlemen can be received as private patients on a voluntary basis or with certificates; written application alone is required for the former.

FEES, including all necessaries except clothing, from THREE to FIVE GUINEAS A WEEK.

Brochure and information may be obtained from the MEDICAL SUPERINTENDENT.

Telephone: 157 BASINGSTOKE.

OXHEY GROVE, HATCH END, MIDDLESEX.

— A NURSING HOME for the treatment of —
EARLY MENTAL CONDITIONS in BOTH SEXES,
twelve miles from Marble Arch. Resident Medical Officer,
visiting Pathologist, Occupational and Psychotherapeutic
treatment. Fees 8 to 12 guineas.

Full particulars from the SECRETARY.

Telephone: HATCH END 368.

HAYDOCK LODGE, NEWTON-LE-WILLOWS, LANCASHIRE

For the reception and treatment of PRIVATE PATIENTS of both sexes of the UPPER AND MIDDLE CLASSES suffering from Mental and Nervous Disorders, Alcoholism and Drug Addiction, either voluntary, temporary or under certificate. Patients are classified in separate buildings according to their mental condition.

Situated in park and grounds of 400 acres. Self-supported by its own farm and gardens in which patients are encouraged to occupy themselves. Every facility for indoor and outdoor recreation. For terms, prospectus, etc., apply MEDICAL SUPERINTENDENT.

Telegraphic Address: "Street," Ashton-in-Makerfield.

'Phone: 7311 Ashton-in-Makerfield.

MENTAL HOSPITALS, INSTITUTIONS, HOMES, ETC.

Holloway Sanatorium

VIRGINIA WATER

A REGISTERED HOSPITAL for the Treatment of MENTAL DISORDERS of the EDUCATED CLASSES

This Institution is situated in a beautiful and healthy locality within easy reach of London. Is fitted with every comfort. Patients can have Private Rooms and Special Nurses, as well as the use of General Sitting Rooms, at moderate rates of payment. Voluntary Patients can be admitted.

There is a Branch Establishment at CANFORD CLIFFS, BOURNEMOUTH, where Patients can be sent for a change and provided with all the comforts of a well-appointed home.

For Terms apply to

Resident Medical Superintendent,

St. Ann's Heath, Virginia Water, Surrey.

THE COPPICE, Nottingham, REGISTERED HOSPITAL FOR MENTAL DISEASES.

President—THE RT. HON. THE LORD BELPER.

This Institution, for the reception of **Private Patients** of both sexes of the **Upper and Middle Classes** only, at moderate rates of payment, is beautifully situated in its own grounds about two miles from Nottingham, and from its singularly healthy and pleasant position, and the comfort of its internal arrangements, affords every facility for the relief and cure of those mentally afflicted. Occupational Therapy. Divine Service is held in the Institution every Sunday by the Chaplain, who also visits the Patients. Motor exercise is provided. There is a branch Seaside Villa at Lowestoft. **VOLUNTARY AND "TEMPORARY" PATIENTS ARE RECEIVED.** For Terms, etc., apply to Dr. HUNTER, Medical Superintendent.

NATIONAL HOSPITAL, Queen Sq., London, W.C. 1

THIS HOSPITAL is a School of Medicine and has been recognised by the Conjoint Board for England as a place where part of the fifth year may be devoted to clinical work.

The following arrangements have been made for the practical study of Diseases of the Nervous System by Students and Practitioners.

THE OUT-PATIENT PRACTICE is open from 2 o'clock every day (except Saturday). Clinical Assistants are appointed to the Physicians for Out-Patients for six months.

THE IN-PATIENT PRACTICE is open at 10 o'clock.

CLINICAL CLERKS are appointed to each Physician for three months, and fifth-year Students are eligible who have filled the post of Clinical Assistant at a General Hospital. They are required to pay the Fees, which are: three months, **£5 5s.**; and six months, **£7 7s.**

A fee of **£2 2s.** for three months is charged for attending the Out-Patient Department only.

Surgical Operations are performed by the Surgeons at 9 a.m. on Tuesdays, Thursdays and Fridays.

Two Post-Graduate Courses are given yearly—in **AUTUMN AND WINTER TERMS.**

For these a special fee is charged.

ALL COMMUNICATIONS should be addressed to the Secretary, at the Hospital, from whom forms of application for the Hospital appointments may be obtained, and to whom all Fees are payable.

J. G. GREENFIELD, *Dean of the Medical School.*

HOLME LACY HOSPITAL

HOLME LACY For Ladies suffering from
HEREFORD :: Nervous & Mental Disorders

This Hospital is situated in 30 acres of garden with magnificent views of the Wye Valley, and homelike surroundings.

Every facility for specialized investigation and treatment is provided, including Hydro-therapy, Helio-therapy, Diathermy and Occupational Therapy.

Provision is made for Tennis, Putting, Croquet and Squash. Voluntary, Temporary and Certified patients received.

Terms from Three Guineas weekly.

For further particulars apply to the Physician Superintendent.

Telephone: Burghill 4.

COURT HALL, KENTON, near **EXETER**

FOR THE TREATMENT OF EIGHT LADIES, VOLUNTARY, TEMPORARY AND CERTIFIED PATIENTS

CLIFFDEN, TEIGNMOUTH

FOR EARLY AND CONVALESCENT CASES
 Recreational Therapies are held daily by Skilled Leaders

The house stands high, with spacious balconies and extensive views of the South Devon Coast. Beautiful garden. Own Dairy in 25 acres. Private road to beach.

There is also a charming house

EBWORTHY, MANATON, DARTMOOR

situated in 20 acres, 1,100 ft. up for bracing moorland air.

Resident Physicians :

BERTHA M. MULES, M.D., B.S. **ANNE S. MULES, M.R.C.S., L.R.C.P.**

Telephones : STARCROSS 59 and TEIGNMOUTH 289.

BETHLEM ROYAL HOSPITAL

FOR NERVOUS AND MENTAL DISORDERS

Monks Orchard, Monks Orchard Rd., Eden Park,
BECKENHAM, KENT

Reg. Tel. Address: Bethlem, Beckenham.

Telephone: Springpark 1180-1181.

Station: Eden Park (Southern Railway).

President: VISCOUNT WAKEFIELD OF HYPHE, G.C.V.O.

Treasurer: SIR LIONEL FAUDEL-PHILLIPS, Bart.

Physician-Supt.: J. G. PORTER-PHILLIPS, M.D., F.R.C.P.

This REGISTERED Hospital is situated at Monks Orchard, in some 250 acres of park, pleasure and farm grounds.

Application can be considered on behalf of patients of the educated classes in a presumably curable condition.

With a view to early treatment voluntary or uncertified patients are admitted.

Patients who can contribute 5 guineas weekly towards the cost of treatment and maintenance may be received as vacancies arise. The Committee will also consider applications for admission at lower rates, and in certain cases will be prepared to admit patients free of charge.

The comfort of sensitive patients is greatly enhanced by the fact that the majority are given single bedrooms.

TREATMENT ON MODERN PRINCIPLES.—Every facility for specialised investigation and treatment is provided in the Lord Wakefield of Hythe Science and Treatment Unit, including RADIOLOGICAL and DENTAL DEPARTMENTS, BIO-CHEMICAL, PATHOLOGICAL and PSYCHOLOGICAL LABORATORIES.

The Medical Staff have access to a panel of Consultants in cases which present unusual symptoms requiring specialised investigation and treatment.

Under the direction of qualified officers HELIO-THERAPY, HYDRO-THERAPY and ELECTRO-THERAPY are administered in the Physio-Therapy Department.

INSULIN TREATMENT.—For special cases of mental disorder Insulin Treatment is being carried out with good results, and suitable cases are accepted.

OCCUPATIONAL THERAPY in the form of various Arts and Crafts is actively encouraged from the medical aspect, and under the guidance of a competent instructress this department has proved most effective as a therapeutic factor in all stages of mental illness.

The promotion of physical fitness is a prominent item of treatment, and this is enhanced by arrangements for patients to take part in Outdoor and Indoor Sports and Entertainments, and special attention is drawn to the physical drill and dancing classes which form part of the regular hospital routine.

Application should be made to the Physician-Superintendent.

LAVERSTOCK HOUSE SALISBURY WILTS

PRIVATE MENTAL HOME FOR LADIES AND GENTLEMEN

Completely up to date. Lovely house and grounds (18 acres). Certified and uncertified cases taken. Facilities for going to the seaside.

ESTABLISHED OVER 200 YEARS

Apply to the Med. Supt. for illustrated brochure.

Tel.: SALISBURY 2612.

CITY OF LONDON MENTAL HOSPITAL

Near DARTFORD, KENT.

Ladies and Gentlemen received for treatment under certificates, or without certification as either VOLUNTARY or TEMPORARY PATIENTS, at a weekly fee of £2 : 9 : 0 and upwards.

APPLY MEDICAL SUPERINTENDENT.