

# JOURNAL OF MENTAL SCIENCE.

Asylum Reports have been received for 1916-17 from those marked with an asterisk :

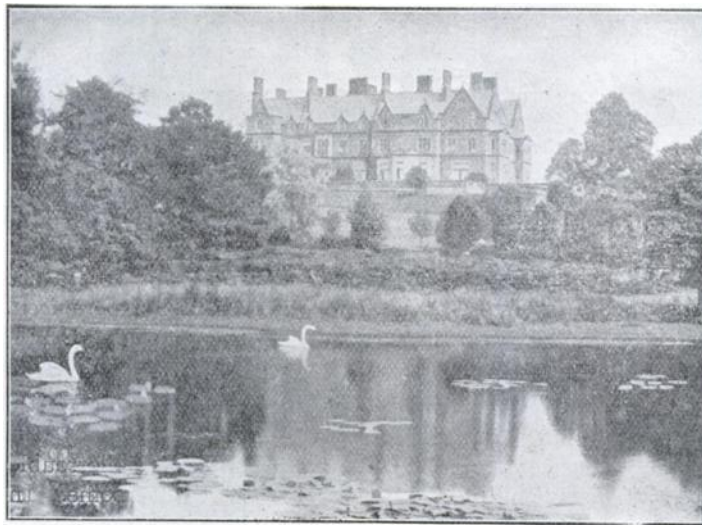
<i>English and Welsh County.</i>	Northampton.	Leicester.	Edinburgh.*
Beds.	Northumberland.	Middlesborough.	Fife and Kinross.*
Berks.	Nottingham.	Newcastle.	Glasgow :
Bucks.*	Oxford.	Norwich.	District.
Cambridge.	Salop.	Nottingham.	Royal.
Carmarthen.*	Somerset* :	Plymouth.	Woodilee.
Chester.	Taunton.	Portsmouth.	Govan.
Chester (Parkside).	Wells.	Sunderland.	Inverness.*
Chichester.*	Stafford :	West Ham.	Kirklands.
Cornwall.	Burntwood.		Lanark.
Cumberland and	Cheddleton.	<i>Hospitals.</i>	Midlothian.
Westmorland.*	Stafford.	Albert.	Montrose.*
Denbigh.	Suffolk.	Barnwood.*	Murthly.
Derby.	Surrey :	Bethlem.	Perth.
Devon.	Brookwood.	Bootham.	Roxburgh (Dis-
Dorset.	Netherne.	Broadmoor.	trict).*
Durham.	Sussex :	City of London.*	Stirling.*
Essex* :	Chichester.	Coton Hill.	
Brentwood.	East.	Earlwood.	<i>Ireland.</i>
Colchester.*	Warwick.	Lincoln.	Armagh.
Glamorgan.*	Wilts.*	Manchester.	Ballinasloe.*
Gloucester.*	Worcester :	<i>Metropolitan Asy-</i>	Belfast.*
Hants.*	Barnsley Hall.	<i>lums Board.*</i>	Carlow.
Isle of Man.*	Powick.*	St. Andrew's.	Castlebar.
Isle of Wight.	Yorkshire :	St. Ann's Coppice.	Clonmel.
Hereford.	Beverley.	St. Luke's.	Cork.
Hertford.*	Clifton.	Rampton.	Downpatrick.
Kent.*	Menstone.	Royal Eastern	Ennis.*
Lancashire :	Storches Hall.	Counties Institu-	Enniscorthy.*
Lancaster.	Wadsley.	tion for Idiots	Farnham.
Rainhill.	Wakefield.*	(Colchester)*.	Kilkenny.
Prestwich.	<i>Borough.</i>	The Retreat	Killarney.
Whittingham.	Birmingham :	(York).*	Letterkenny.
Winwick.	Rubery Hill.	Warneford.	Limerick.*
Leicester.	Winson Green.	Wonford.	Londonderry.*
Lincoln :	Bristol.	<i>Scotland.</i>	Maryborough.
Bracebridge.	Canterbury.	Aberdeen (King-	Monaghan.*
Kesteven.	Cardiff.	seat).*	Mullingar.
London City.	Derby.	Argyll and Bute.*	Omagh.*
London County.	Exeter.	Ayr.*	Palmerston.
Middlesex.	Haywards Heath.	Baldovan.	Richmond.
Monmouth.*	Hull.	Barony.	St. Patrick's.
Norfolk.	Ipswich.	Dumfries.*	Sligo.
		Dundee.	Waterford.

The following Asylum Reports have also come to hand :

Agra and Oudh.	Egypt.	Montreal.*	Punjab.
Albany.	Grahamstown.	New Brunswick.	Protestant Hospital
Alt Scherbitsz.	Harrisburgs.	New Hampshire.	for the Insane.*
Annual Report of	Hudson River.	New South	Rangoon.
the Massachu-	Illinois West.	Wales.*	Rochester.
setts School for	Indiana East.	New York.*	Sheppard and
the Feebleminded	Iowa.	Northampton.	Pratt Hospital,
at Waltham.*	Jamaica.	North-Western	Baltimore.*
Assam.	Lebanon.	Provinces.	South Australia.
Bengal.	Long Island.	Nova Scotia.	South Mountain.
Binghampton.	Long View.	Pennsylvania.	Straits Settle-
Bombay.	Lower Austria.	Ohio.	ments.
Buffalo.	Madras.	Ontario.	Tarrytown.
Butler.	Manhattan.	Pennsylvania.	Taunton.
Cape of Good	Massachusetts	Pennsylvania Hos-	Texpur.
Hope.	Board.	pital.	Utica.
Carolina N.	Massachusetts	Pennsylvania,	Verdun.*
Carthage.	Hospital.	Norristown,	Victoria.*
Central Provinces.	Maryland.	Aarhus.	Virginia Central.
Cleveland.	Matteawan.	Pennsylvania West.	Virginia West.
Connecticut.	Michigan East.	Philadelphia	Warren.
Dakota N.	Mississippi.	Friends.	Willard.
Danville.	Missouri.	Pretoria.	Washington.

## BOREATTON PARK.

Founded by the late W. H. O. SANKEY, M.D., F.R.C.P., for the reception of a limited number of ladies and gentlemen mentally afflicted, and now conducted on the same lines by his son, E. H. O. SANKEY, M.A., M.B., B.C.Cantab.



The house, a first-class country Mansion, specially adapted for its purpose, stands about 400 ft. above the sea and commands magnificent views of Welsh mountain scenery.

The Gardens slope to the West, and lead to the Deer Park, one of the oldest in the kingdom.

There is fishing both for trout and coarse fish in the pools in the Deer Park, and the right of fishing in about 5 miles of the River Perry is leased.

There are Hot Houses and Orchard House.

Private Golf Course of 18 holes, Tennis Courts, and Croquet Lawns.

So far as possible the patients of both sexes take their meals and associate at all times with the family of the Superintendent, the object being to make the house as much as possible like an ordinary country house.

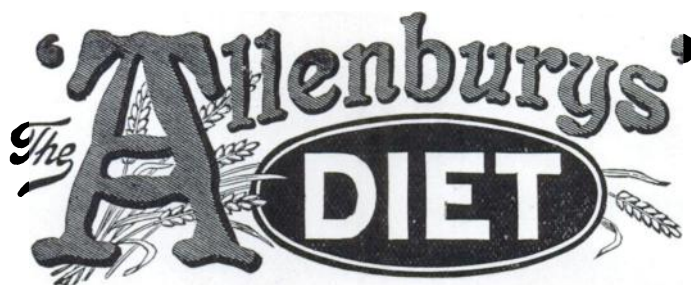
Arrangements can be made for friends of the Patients to reside in the house should they desire to do so.

There is good stable accommodation, and Horses, Carriages and Motor are provided.

For further particulars apply--

**Dr. SANKEY, Boreatton Park, Baschurch, Salop.**

## Mental or Physical Fatigue



### A PARTIALLY PRE-DIGESTED MILK AND WHEATEN FOOD.

When brain or body is weary the digestive powers are weakened and distaste for ordinary food is often experienced. Under such circumstances the "ALLENBURYS" DIET is especially valuable. It is pleasant to take, easily digested and assimilated, and speedily restorative. Thus it helps the system to recover tone and vigour.

By the use of the "ALLENBURYS" DIET all trouble of peptonising milk and farinaceous foods is overcome. In the sick room it will be found extremely useful as the food is easily digested and assimilated, is quickly made, and only the exact quantity required need be prepared at a time.

The "ALLENBURYS" DIET is made from pure, rich milk and whole wheat, both ingredients being partially pre-digested during manufacture. It can be taken by those who cannot digest cow's milk, and provides a light and very nourishing diet for Invalids, Dyspeptics and the Aged.

For travellers by sea or land this complete food will be found exceedingly valuable.

**Made in a minute. Add boiling water only.**

**A Sample with full particulars sent free on request.**

**ALLEN & HANBURYS Ltd.,**  
**37 Lombard Street, London, E.C.**

# **BORDERLAND PATIENTS.**

---

---

## **SOUTH BEACON**

**Hadlow Down,  
Nr. Uckfield, Sussex.**

---

**ESTABLISHED 1892.**

---

*Telegrams: "Hadlow Down."*

*Station: Buxted (L.B. & S.C.R.)*

□  
**Outdoor  
Occupation  
a Speciality.**  
□



□  
**The usual  
Recreations  
of a Country  
House.**  
□

**For the reception of 15 gentlemen requiring  
rest and quietness, but who are not  
ill enough for certificates.**

---

**Terms from 4 Guineas per week.**

---

**Full particulars from :: :: PHILIP H. HARMER.**

Now Ready. Crown 8vo. **6s. 6d.** net.

## **STUTTERING AND LISPING**

**By E. W. SCRIPTURE, Ph.D., M.D.**

THE MEDICAL PRESS.—“Since the publication of Kussmaul's classical work we doubt if anyone has given us anything so practical on speech defects and their remedies as the writer whose book is now under review. The causes, symptoms, diagnosis, and treatment of stuttering are fully dealt with, and the hints on therapeutics are of very special value. . . . This is a thoroughly scientific book on the right lines by an original worker, and its careful perusal will be of infinite service to those who have to treat speech defects in their practice.”

**MACMILLAN & CO., Ltd., London.**

---

ALWAYS USE

# **REFLEX**

**FLOOR POLISH.**

REQUIRES NO MIXING WHATEVER.

**Brilliantly Polishes Floors, Linoleums, Floorcloths, &c.**

*Economical, Cleanly, Healthful; Maximum of Lustre for Minimum of Labour.*

**GEO. T. COX & SONS, Ltd.,**

**31, KING WILLIAM STREET, LONDON BRIDGE, E.C.**

This Polish is specially adapted for use in Public Institutions and other large establishments. Samples Free on application.

# JOURNAL OF MENTAL SCIENCE.

CONTENTS FOR APRIL, 1918.

	Pages
<b>Obituary.—</b>	
Henry Maudsley, M.D., F.R.C.P.Lond., LL.D.Edin.(Hon.) . . . . .	118
<b>Original Articles.—</b>	
The Ætiology of Crime; by Charles Goring, M.D., B.Sc.—The Relation of Alcohol to Mental States, particularly in regard to the War; by Major Sir Robert Armstrong-Jones, M.D., R.A.M.C.—War Psychoses: An Analysis of 202 Cases of Mental Disorder Occurring in Home Troops; by Temp. Capt. D. K. Henderson, M.D., R.A.M.C.—Evolutional Progress in Psychiatry: A Plea for Optimism; by Hubert J. Norman, M.B., D.P.H., Capt. (Temporary) R.A.M.C. . . . .	129—210
<b>Occasional Note.—</b>	
Early Treatment of Mental Disorders . . . . .	210—213
<b>Reviews.—</b>	
Automatisme et Suggestion; par H. Bernheim.—Mental Conflicts and Misconduct; by William Healy.—Manuel de Psychiatrie; par le Docteur J. Rogues de Fursac.—Collected Papers on Analytical Psychology; by C. G. Jung, M.D., LL.D . . . . .	213—220
<b>Epitome of Current Literature.—</b>	
1. Physiological Psychology.—2. Clinical Neurology and Psychiatry. —3. Sociology . . . . .	220—226
<b>Notes and News.—</b>	
The Medico-Psychological Association of Great Britain and Ireland. Quarterly Meeting.—Irish Division.—Northern and Midland Division.—Examination for Nursing Certificate.—Notices by the Registrar.—Obituary.—Notice to Contributors . . . . .	227—249

---

ADLARD AND SON AND WEST NEWMAN, LTD., IMPR., LONDON AND DORKING.