

AMERICAN JOURNAL OF PSYCHIATRY

Volume 142, Number 11

November 1985

Special Articles

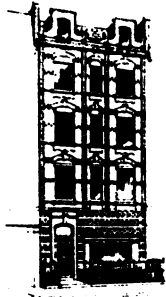
- 1259 The Self-Medication Hypothesis of Addictive Disorders: Focus on Heroin and Cocaine Dependence; *Edward J. Khantzian*
1265 The Legacy of Ewald Hecker: A New Translation of "Die Hebephrenie"; *Mark J. Sedler*

Regular Articles

- 1272 Measurement of Mood and Affect in Schizophrenic Inpatients; *Thomas J. Craig, Mary Ann Richardson, Raymond Pass, and Zachary Bregman*
1278 Glucocorticoid Receptors in Depression: Relationship to the Dexamethasone Suppression Test; *Glenn J. Gormley, Martin T. Lowy, Anthony T. Reder, Verne D. Hospelhorn, Jack P. Antel, and Herbert Y. Meltzer*
1285 An Empirical Study of Psychosis in Borderline Personality Disorder; *Harrison G. Pope, Jr., Jeffrey M. Jonas, James I. Hudson, Bruce M. Cohen, and Mauricio Tohen*
1291 Depressive Behavior and Hyperactive Adrenocortical Function; *James H. Kocsis, John M. Davis, Martin M. Katz, Stephen H. Koslow, Peter E. Stokes, Regina Casper, and D. Eugene Redmond*
1299 A Pilot Study of the Effect of Exposure to Child Abuse or Neglect on Adolescent Suicidal Behavior; *Eva Y. Deykin, Joel J. Alpert, and John J. McNamara*
1304 Symptom Patterns Associated With Posttraumatic Stress Disorder Among Vietnam Veterans Exposed to War Trauma; *Robert S. Laufer, Elizabeth Brett, and M. S. Gallops*
1312 The Concept of Subcortical Dementia; *Steven J. Huber and George W. Paulson*

Brief Communications

- 1318 Autoimmune Thyroiditis in Manic-Depressive Patients Treated With Lithium; *Joseph R. Calabrese, A. Dale Gullede, Kurt Hahn, Robert Skewerer, Margaret Kotz, O. P. Schumacher, Manjula K. Gupta, Neal Krupp, and Philip W. Gold*
1321 Family Characteristics of 105 Patients With Bulimia; *Craig Johnson and Anna Flach*
1325 Carry-Over Effects of Marijuana Intoxication on Aircraft Pilot Performance: A Preliminary Report; *Jerome A. Yesavage, Von Otto Leirer, Mark Denari, and Leo E. Hollister*
1330 Four-Year Assessment of a Day Hospital-Inn Program as an Alternative to Inpatient Hospitalization; *Jon E. Gudeman, Barbara Dickey, April Evans, and Miles F. Shore*
1334 Down-Regulation of Central Dopamine Receptors in Schizophrenia; *Frank P. Zelman, Robert J. Hitzemann, Jack Hirshowitz, and David L. Garver*
1338 Long-Term Psychological Effects of Rape in 35 Rape Victims; *Jose M. Santiago, Fred McCall-Perez, Michele Gorcey, and Allan Beigel*
1341 Platelet MAO Activity in Posttraumatic Stress Disorder; *Jonathan Davidson, Steven Lipper, Clinton D. Kilts, Steven Mahorney, and Elliott Hammett*
1344 Historical Comment on *DSM-III* Schizoid and Avoidant Personality Disorders; *W. John Livesley, Malcolm West, and Arlene Tanney*
1347 Are American Psychiatric Outpatients More Depressed Than Chinese Outpatients? *Joe Yamamoto, Eng-Kung Yeh, Fred Loya, Paul Slawson, and Margo-Lea Hurwicz*
1351 Psychotic Patients' Understanding of Informed Consent; *Michael Irwin, Alix Lovitz, Stephen R. Marder, Jim Mintz, William J. Winslade, Theodore Van Putten, and Mark J. Mills*
1355 Reliability and Concordance in the Subtyping of Schizophrenia; *Alan M. Gruenberg, Kenneth S. Kendler, and Ming T. Tsuang*
1359 Premenstrual Mood Disorder and Psychiatric Illness; *Renate DeJong, David R. Rubinow, Peter Roy-Byrne, M. Christine Hoban, Gay N. Grover, and Robert M. Post*
1362 Attitude Change Concerning Right to Refuse Treatment: The Impact of Experience; *Renée L. Binder, Dale E. McNeil, and Paul S. Fishman*



INSTITUTE OF FAMILY THERAPY

(LONDON)

ATTACHMENT PATTERNS: IMPLICATIONS OF SIGNIFICANT NEW FINDINGS FOR WORK WITH CHILDREN AND FAMILIES

presented by

DR JOHN BOWLBY DR JOHN BYNG-HALL
FRIDAY 28 FEBRUARY 1986 and SATURDAY 1 MARCH 1986

to be held at

THE INSTITUTE OF PSYCHIATRY

Recent longitudinal studies show interesting and significant correlations between the emotional health of children, current family attachment patterns and the attachment experiences of their parents.

The Conference will be of particular interest to:

- (a) family therapists
- (b) mental health workers who are in the area of child development
- (c) those working with disturbed family attachments from infancy onwards

Further details may be obtained from the Training Secretary, Institute of Family Therapy (London), 43 New Cavendish Street, London W1M 7RG. *Please write enclosing an SAE.*

Index to Advertisers

Pharmaceuticals

The Boots Company plc facing p 631
Brocades Limited p ii
Janssen Pharmaceutical Ltd loose insert
Lundbeck Limited facing pp 630, 640 & 641

Clinics, Hospitals and Nursing Homes

AMI Health Care/Grafton Manor p ii
Nightingale BUPA Hospital p vi
Richmond Fellowship p v
St. Andrew's Hospital p iii
The Retreat p ii

Booksellers and Publishers

Associated Book Publishers (Tavistock) p vi

The Royal College of Psychiatrists p iv
John Wiley & Sons Limited ... p v and loose insert

Surgical and Medical Appliances

Holstar Instruments Limited p viii

Appointments

Edmonton General Hospital p vii
Universite de Lausanne p vi

Miscellaneous

Charing Cross & Westminster Schools p v
Institute of Family Therapy inside back cover