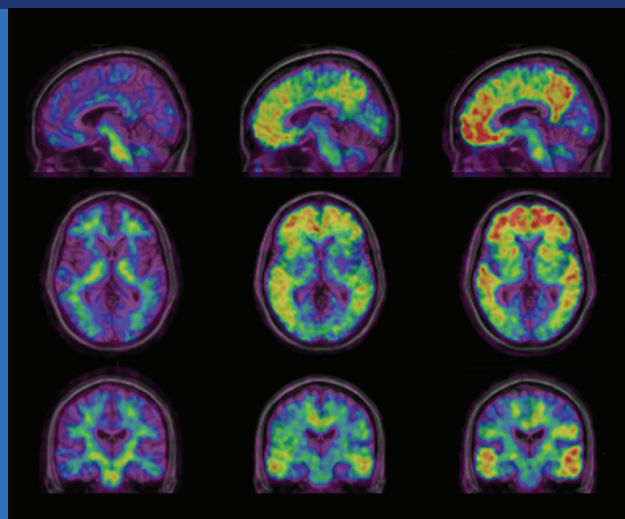


International Psychogeriatrics

journals.cambridge.org/ipg



The Official Journal of the
International Psychogeriatric Association
Better Mental Health for Older People



International Psychogeriatric Association

Towards Successful Aging: Harmony of Mental, Physical, and Social Life

CAMBRIDGE
UNIVERSITY PRESS

16th International Congress

1–4 October 2013 Seoul, Korea

International Psychogeriatrics



Editorial Panel

EDITOR-IN-CHIEF

Nicola T. Lautenschlager
Melbourne, Australia

DEPUTY EDITORS

Christina Bryant
Melbourne, Australia

Kostas Lyketos
Baltimore, MD, USA

John O'Brien
Cambridge, UK

Craig Ritchie
London, UK

Guk-Hee Suh
Seoul, South Korea

ASSOCIATE EDITORS

Osvaldo Almeida
Perth, Australia

Olusegun Baiyewu
Ibadan, Nigeria

Susan Benbow
Wolverhampton, UK

Henry Brodaty
Sydney, Australia

Alistair Burns
Manchester, UK

Helen Chiu
Hong Kong, China

Jiska Cohen-Mansfield
Tel Aviv, Israel

Martin Cole
Montreal, Canada

Claudia Cooper
London, UK

George Demakis
Charlotte, NC, USA

Glenna Dowling
San Francisco, CA, USA

Colleen Doyle
Melbourne, Australia

Leon Flicker
Perth, Australia

Mary Ganguli
Pittsburgh, PA, USA

Serge Gauthier
Montreal, Canada

Yonas Geda
Scottsdale, AZ, USA

Meredith Gresham
Sydney, Australia

Martin Haupt
Düsseldorf, Germany

Nathan Herrmann
Toronto, Canada

Akira Homma
Tokyo, Japan

Zahinoor Ismail
Calgary, Canada

K. S. Jacob
Vellore, India

Helen Kales
Ann Arbor, MI, USA

Rob Kok
The Hague, The Netherlands

Linda Lam
Hong Kong, China

Iracema Leroi
Manchester, UK

João Carlos Barbosa Machado
Belo Horizonte, Brazil

Raimundo Mateos
Santiago de Compostela, Spain

Peter Rabins
Baltimore, MD, USA

Paul Rosenberg
Baltimore, MD, USA

Ajit Shah
London, UK

Gary Small
Los Angeles, CA, USA

Sergio Starkstein
Perth, Australia

David Steffens
Durham, NC, USA

Greg Swanwick
Dublin, Ireland

Johannes Wancata
Vienna, Austria

MANAGING EDITOR

Susan M. Oster
Northfield, IL, USA

STATISTICAL ADVISORS

Lucy Busija
Melbourne, Australia

(Joyce) H. Chung-Chou Chang
Pittsburgh, PA, USA

Hiroko H. Dodge
Portland, OR, USA

Theodore Malmstrom
St. Louis, MO, USA

BOOK REVIEW EDITOR

David Ames
Melbourne, Australia

FOUNDER EDITOR

Gene Cohen
Deceased

EDITOR EMERITUS

Robin Eastwood
Bere Ferrers, UK

PAST EDITORS

David Ames
Manfred Bergener
Gene Cohen
Robin Eastwood
Sanford Finkel
Kazuo Hasegawa
Akira Homma

ASSISTANT TO THE EDITOR-IN-CHIEF

Joan Mould
Melbourne, Australia

Subscriptions

International Psychogeriatrics (ISSN 1041-6102) is published monthly. The annual subscription price (excluding VAT), including delivery by air where appropriate, plus electronic access for subscribers of Volume 25 is £632 (US\$1169 in the USA, Canada and Mexico) for institutions; £286 (US\$529 in the USA, Canada and Mexico) for individuals ordering direct from the publisher and certifying that the journal is for their personal use. Single parts are £79 (US\$151 in the USA, Canada and Mexico) plus postage. The electronic only price and print only price available to institutional subscribers is £481 and £632 (US\$889 and \$1169 in the USA, Canada and Mexico), respectively. Orders, which must be accompanied by payment, may be sent to a bookseller, subscription agent or to the publisher: Cambridge University Press, The Edinburgh Building, Shaftesbury Road, Cambridge CB2 8RU, UK; or in the USA, Canada and Mexico: Cambridge University Press, Journals Fulfillment Department, 100 Brook Hill Drive, West Nyack, New York 10994-2133. EU subscribers (outside the UK) who are not registered for VAT should add VAT at their country's rate. VAT registered subscribers should provide their VAT registration number. Japanese prices for institutions are available from: Kinokuniya Company Ltd, PO Box 55, Chitose, Tokyo 156, Japan. Periodicals postage paid at New York, NY, and at additional mailing offices. POSTMASTER: send address changes in USA, Canada and Mexico to: *International Psychogeriatrics*, Cambridge University Press, 100 Brook Hill Drive, West Nyack, New York 10994-2133. Claims for missing issues should be made immediately on receipt of the subsequent issue.

Internet access

This journal is included in the Cambridge Journals Online service which can be found at journals.cambridge.org/ippg. For further information on other Press titles go to <http://www.cambridge.org>.

Abstracts

International Psychogeriatrics is abstracted and indexed in *Abstracts in Social Gerontology*; *Current Literature on Aging*; *AgeLine*; *Combined Health Information Database (CHID)*; *Cumulative Index to Nursing & Allied Health Literature (CINAHL)*; *Current Contents/Social and Behavioral Sciences*; *EMBASE/Excerpta Medica*; *e-psyche*; *Index Medicus/MEDLINE*; *ISIA Alerting Services*; *Mental Health Abstracts*; *New Literature on Old Age*; *PsychINFO*; *PsychLIT*; *Psychological Abstracts*; *PubMed*; *Social Sciences Citation Index*; *Social Services Abstracts*; *Social Work Abstracts*; *Sociedad Iberoamericana de Información Científica (SIIC) Data Bases*; *SciSearch* and *Zeitschriftenbibliographie Gerontologie (GerolIT)*.

Copying

This journal is registered with the Copyright Clearance Center, 222 Rosewood Drive, Danvers, MA 01923, USA. Organizations in the USA who are also registered with CCC may therefore photocopy material (beyond the limits permitted by sections 107 and 108 of US Copyright Law) subject to payment to CCC of the per-copy fee of \$16.00. This consent does not extend to multiple copying for promotional purposes. Code 1041-6102/2008. ISI Tear Sheet Service, 3501 Market Street, Philadelphia, PA 19104, USA, is authorized to supply single copies of separate articles for private use only. Organizations authorized by the UK Copyright Licensing Agency may also photocopy material subject to the usual conditions. For all other use, permission should be sought from Cambridge or the American Branch of Cambridge University Press. No other part of this publication may be reproduced, stored or distributed by any means without permission in writing from Cambridge University Press, acting for the copyright holder.

Acknowledgement

Old Man Crossword, by Louis-Paul St-Onge /iStockphoto; Representative sagittal, transaxial and coronal PiB-PET images overlaid on MRI of a healthy elderly control (left), an age matched subject with mild cognitive impairment (center) and an Alzheimer's disease patient (right) showing different degrees of A β accumulation in the brain by A/Prof Victor Villemagne and Prof Christopher Rowe; A shot of a senior couple practicing tai-chi exercise by Supri Suharto/shutterstock