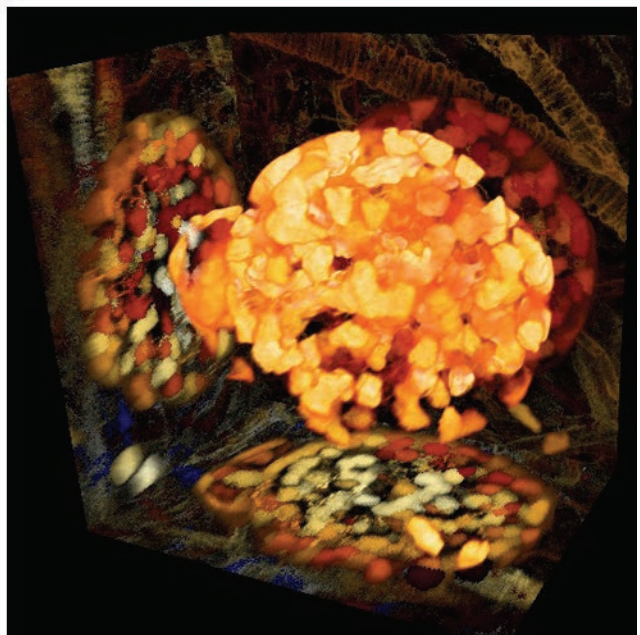
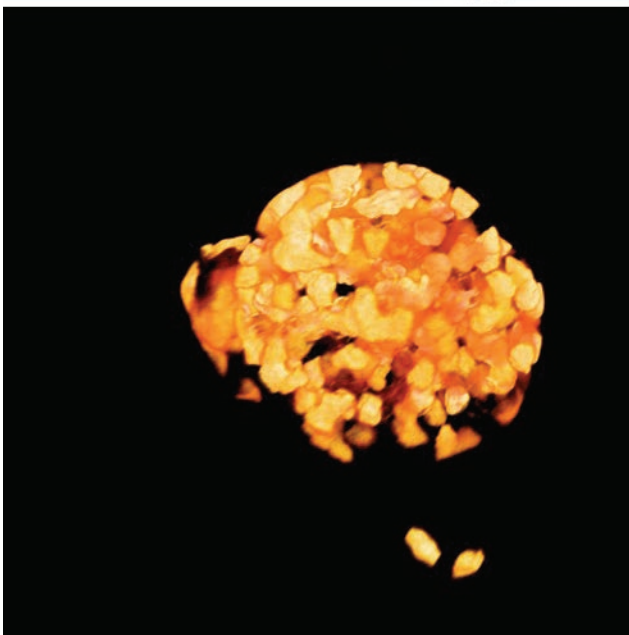
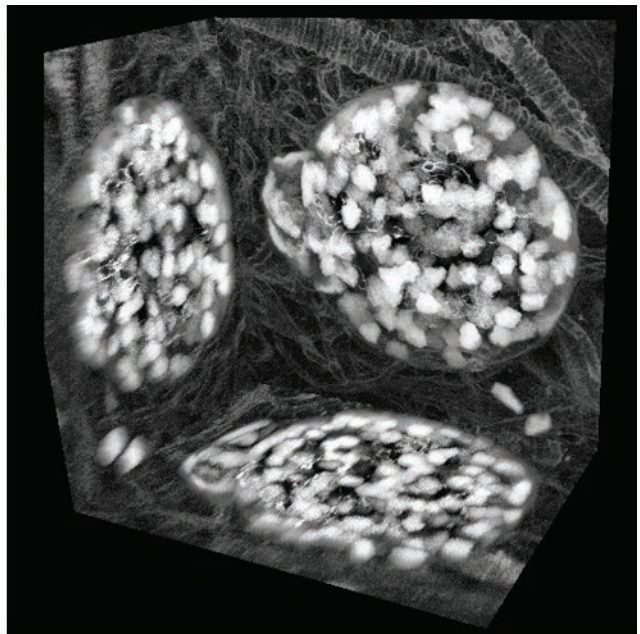
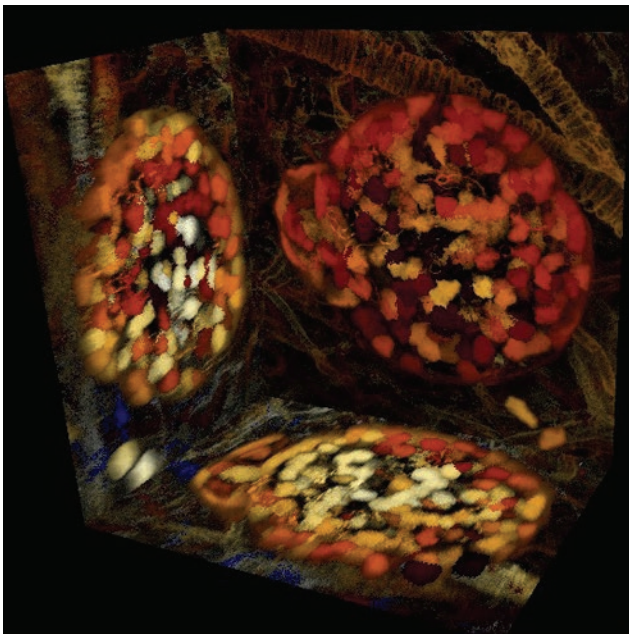


Microscopy TODAY

Volume 21 Number 4 2013 July



Innovative History Driving the Future of Discovery



Test-drive the Ultimate SEM at M&M 2013....

Hitachi's next generation Cold Field Emission SEM offers unmatched low-voltage imaging and comprehensive analytical microanalysis with the uncompromised performance of CFE.

New CFE Technology from Hitachi:

- Increased probe current for S/N and analytical performance
- Unparalleled imaging throughput with improved CFE beam stability
- Enhanced deceleration and energy filtering system affording fine contrast differentiation at low accelerating voltages

Meet Helio Castroneves, three time Indy 500® Champion and driver of the #3 Hitachi Team Penske Chevy Dallara, at the Hitachi Booth #1304 on Tuesday, August 6th. Enter to win an autographed #3 Hitachi diecast model car.

Hitachi is an official sponsor of Penske Racing.



2013 Penske Racing, Inc.

Hitachi is a registered trademark of Hitachi, Ltd. All other trademarks are property of respective owners.

Hitachi High Technologies America, Inc.
toll free: 800-548-9001 (US & Canada)
email: emdwebsite@hitachi-hta.com
www.hitachi-hta.com

M&M 2013 Booth #1304

HITACHI
Inspire the Next

Copyright © 2013 Hitachi High Technologies America, Inc. All rights reserved.

M&M 2013 MICROSCOPY & MICROANALYSIS

August 4 – 8 • Indianapolis, IN

Register
now—save
\$100!

SHARE

information and
techniques

LEARN

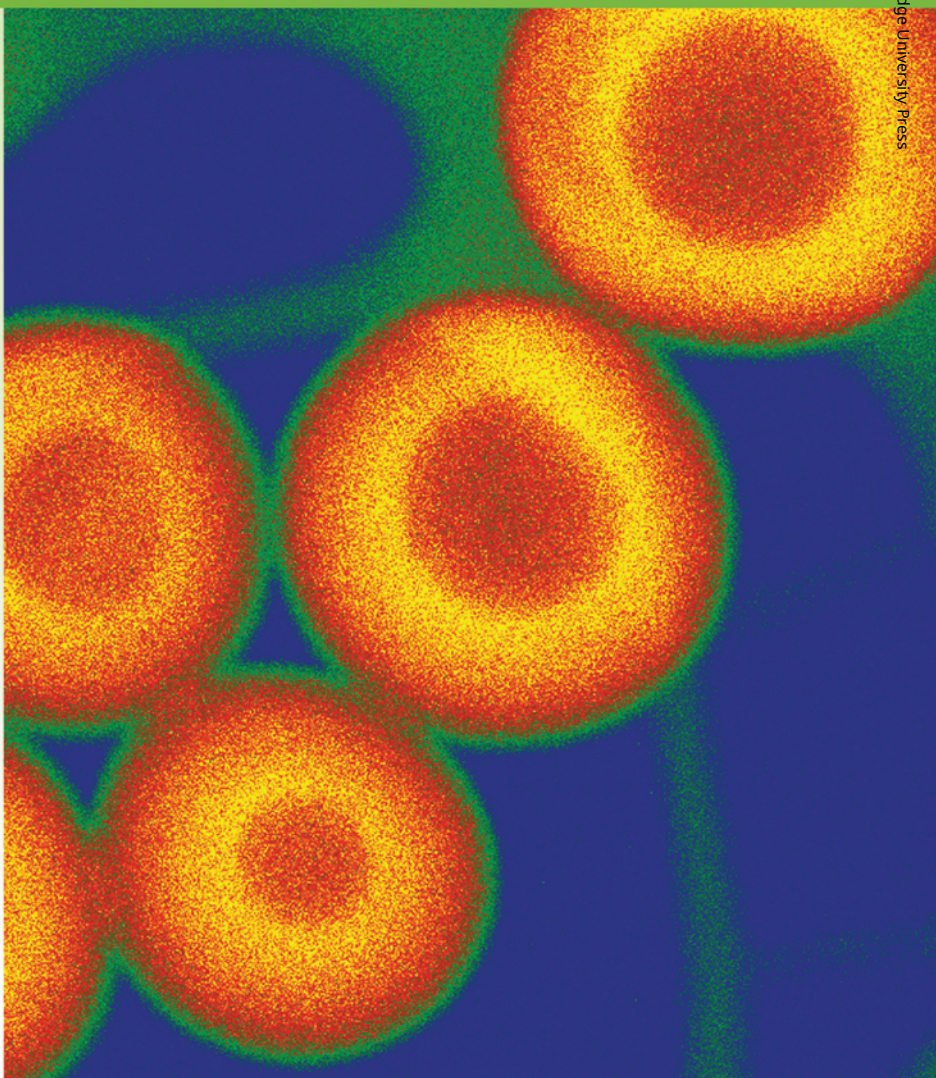
about cutting-edge
technology

EXPAND

your professional
network

GROW and SOLIDIFY

your career!



Register Online: <http://microscopy.org/MandM/2013>

Visit M&M website often for detailed program information,
registration & hotel info.



Raise your confidence

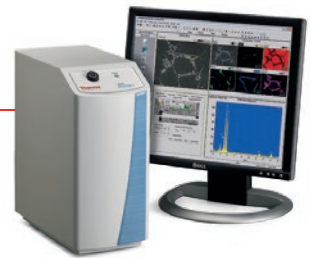
Spectral imaging on the **Thermo Scientific NORAN System 7** creates new opportunities to discover what is truly in your sample. Our UltraDry detector and analyzer electronics ensure that you collect as much data from the sample as possible. Go beyond simple elemental EDS map analysis; our exclusive COMPASS™ software processes spectral imaging data using principal component and statistical analyses to reveal unique phases and enrich your understanding of materials.

See what's really in your sample

• Discover more: thermoscientific.com/microanalysis



UltraDry EDS Detector
Fastest Collection, Most Accuracy



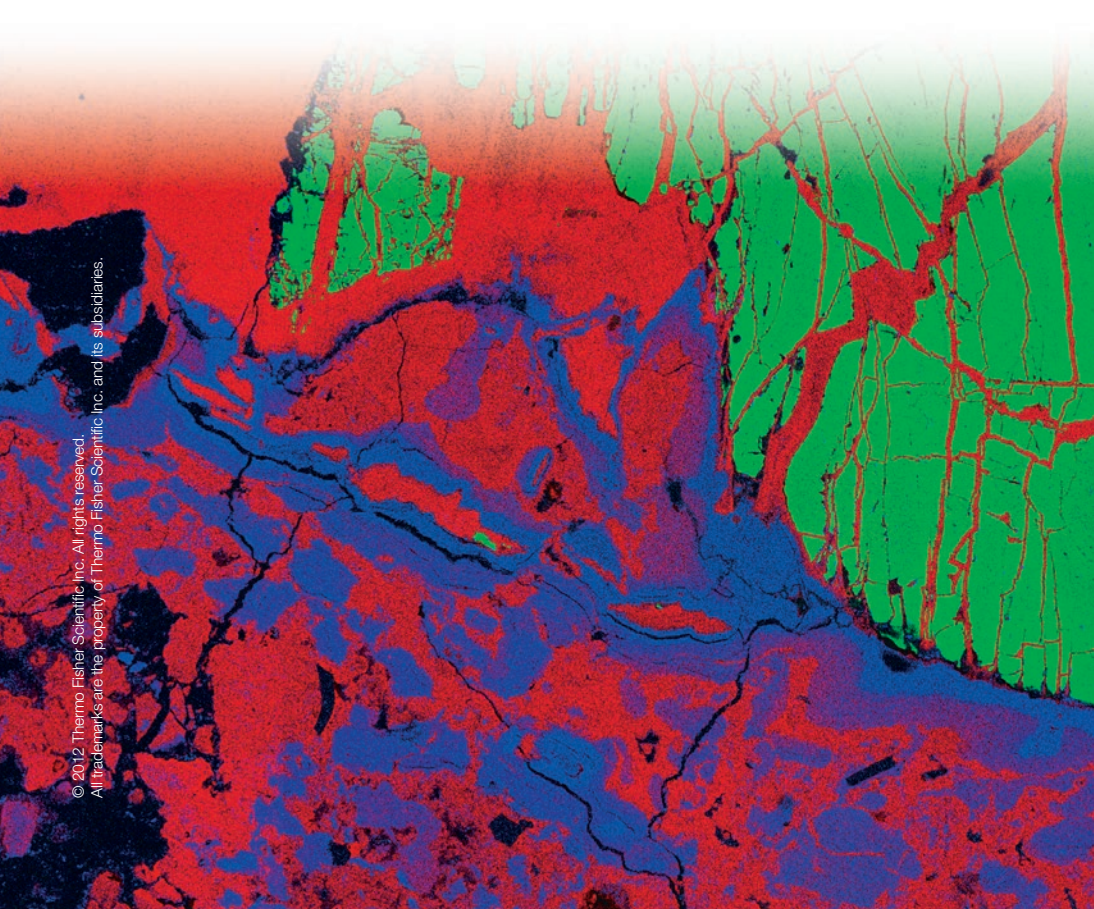
NORAN™ System 7
Integrated X-ray Microanalysis System



QuasOr EBSD
Simultaneous EDS. Better data.



MagnaRay WDS
Resolution with EDS Ease of Use



Contents

Light Microscopy

- 10 As Clear as a Cell: Researchers See Deeper into Tissue than Ever Before**
Brendan Brinkman
- 14 Ground State Depletion Microscopy Applied to Tubulin Modifications in Epithelial Cells**
Sabrina Zink, Lena Grosse, Sebastian Bänfer, and Ralf Jacob
- 20 Imaging Cosmic Ray Particles with a Light Microscope Scientific Digital Camera**
George McNamara

Microanalysis

- 24 Combined Electron Excitation and X-Ray Excitation for Spectrometry in the SEM**
Kenny C. Witherspoon, Brian J. Cross, and Mandi D. Hellested
- 30 Is Energy Resolution Still an Important Specification in EDS?**
Keith Thompson
- 36 Simultaneous EELS/EDS Composition Mapping at Atomic Resolution Using Fast STEM Spectrum-Imaging**
Paolo Longo, Paul Thomas, Aziz Aitouchen, Bernhard Schaffer, and Ray D. Twisten

Platform Transcripts

- 42 Equipment Funding Opportunities and Strategies for Success (Part 6)**
Christina Liu

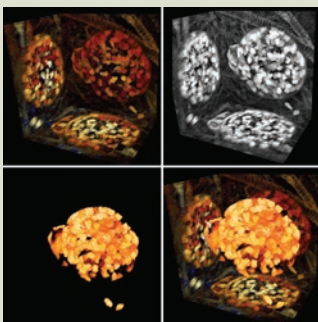
Microscopy Pioneers

- 48 Pioneers in Optics: Robert Hooke**
Michael W. Davidson

Departments

- 7 Editorial**
- 8 Carmichael's Concise Review**
- 52 Industry News**
- 54 Product News**
- 56 NetNotes**
- 68 Calendar of Meetings**
- 70 Dear Abbe**
- 72 Opinion**
- 74 Index to Advertisers**

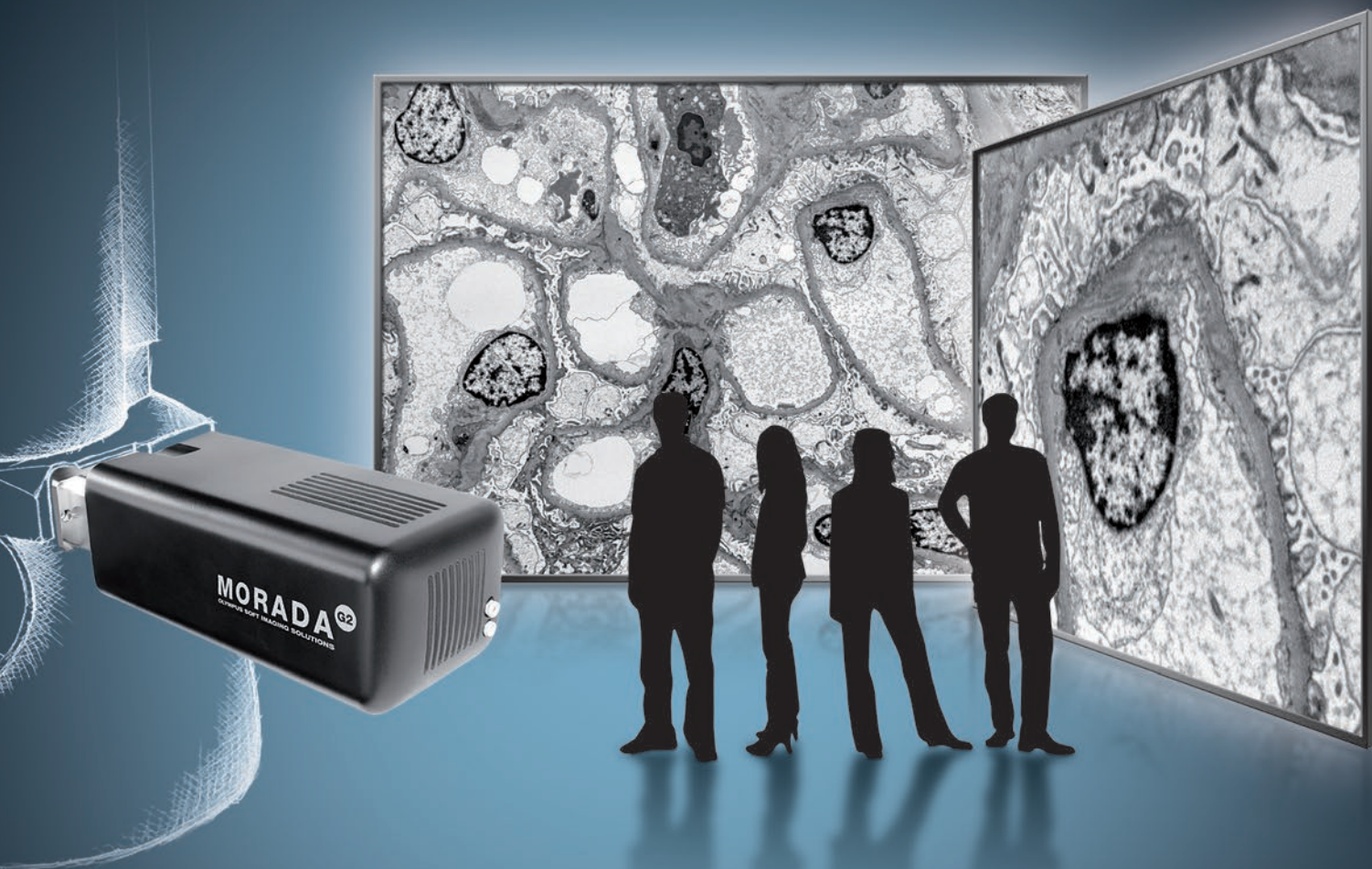
About the Cover



Mouse pancreatic islet cleared with SCALEVIEW-A2 reagent and imaged with a 4 mm 25× SCALEVIEW objective. Image width = 150 μ m.

See article by Brinkman.

One image. Every detail.
Keep track of your sample.



Morada G2 - 11 Megapixel side-mounted TEM CCD camera

Are you looking for a complete sample image? Are you interested in high resolution? Or do you need both - overview scans and image details? Whatever your requirements, the Morada G2 will be your camera of choice.

Experience a new method of TEM imaging and keep track of your sample. Survey your sample using an impressive field of view. Scan for interesting areas in real time. Zoom in on details instantly. Snap high-contrast, high-sensitivity and superior-resolution images. All these features and more make the Morada G2 perfect for every imaging task.

One image. Every detail. Just one camera. The Morada G2. Imaging solution for electron microscopy. Based on opto-digital know-how. Designed by customer requirements.

For further information: info.osis@olympus-sis.com,
www.soft-imaging.net

OLYMPUS

Your Vision, Our Future

