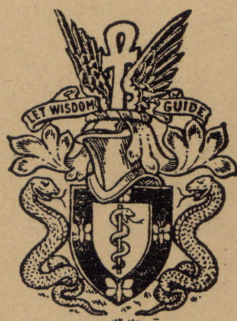


VOL. XCV, NO. 399

APRIL, 1949

# THE JOURNAL OF MENTAL SCIENCE

(THE BRITISH JOURNAL OF PSYCHIATRY)



BY AUTHORITY OF  
THE ROYAL MEDICO-PSYCHOLOGICAL ASSOCIATION

EDITOR-IN-CHIEF

**G. W. T. H. FLEMING**

CO-EDITORS

**Alexander Walk and P. K. McCowan**

AND WITH THE ASSISTANCE OF

<b>E. D. Adrian</b>	<b>E. G. Holmes</b>
<b>F. C. Bartlett</b>	<b>C. J. McCarthy</b>
<b>S. M. Coleman</b>	<b>Alfred Meyer</b>
<b>C. J. C. Earl</b>	<b>Lionel S. Penrose</b>
<b>Sir A. Fleming</b>	<b>A. A. W. Petrie</b>
<b>F. L. Golla</b>	<b>E. T. O. Slater</b>
<b>W. Stephenson</b>	

LONDON

**J. & A. CHURCHILL, LTD**

Published Four times Yearly, Ten Shillings and Sixpence net

# THE JOURNAL OF MENTAL SCIENCE

Communications on general editorial matters, including MSS. for publication, books for review and other printed matter, and communications regarding the *Epitome* section, including journals to be abstracted, should be sent to the **Editor-in-Chief, Barnwood House, Gloucester.**

Communications and inquiries regarding sales should be addressed to the Publishers, **Messrs. J. & A. CHURCHILL, Ltd., 104, Gloucester Place, Portman Square, London, W.1;** and those regarding Advertisements to **Messrs. S. & H. FRETWELL, Ltd., 92, Fleet Street, London, E.C.4.** Phone: Central 5587/8.

---

## THE ROYAL MEDICO-PSYCHOLOGICAL ASSOCIATION.

### PUBLICATIONS.

From MESSRS. ADLARD & SON, LTD.,  
Bartholomew Press, Dorking, Surrey.

**Enquiry (History) Form**, for use in Mental Hospitals. In three sizes. Prices and specimen forms on application.

**Card of Practical Instruction.** Prices on application.

From MESSRS. J. & A. CHURCHILL, LTD.,  
104 Gloucester Place, W. 1

**"The Journal of Mental Science."** Published four times a year. Price 10/6. Postage extra.

From MESSRS. BAILLIÈRE, TINDALL & COX,  
8 Henrietta Street, W.C. 2

**"Handbook for Mental Nurses."** 8th edn. In preparation.

**"Manual for Mental Deficiency Nurses."** 1931. Price 6/6 net.

**"Occupational Therapy."** Addendum to "Handbook." 1938. Price 6d.

From the REGISTRAR, Southfield, Shipton Road, York.

**"Syllabuses," for the Examinations for the Certificates of Proficiency in Mental Nursing and in Nursing Mental Defectives.** Price 2d. each. Postage 1d.

**"Regulations and Rules for the Nursing Examinations."** Revised, 1938. Price 9d. each. Postage 1d.

**"Examination Papers, 1928-38."** Price 9d. each. Postage 1d.

**"Regulations for the D.P.M. of the R.M.P.A."** Price 3d. Postage 1d.

From the SECRETARY, 11 Chandos Street, W. 1.

**The Charter and Bye-Laws of the Association.** Price 2/- Postage 1½d.

---

Edited by SANDOR LORAND

## Psycho-Analysis Today

This unique work consists of the contributions of twenty-nine eminent psychiatrists and psycho-analysts, all important in their own fields. It is a survey of the development and progress of psycho-analytic research and its contribution to scientific research up to the present. "Practitioners should note that this book is one that should be in the library of every practising doctor."—*Medical World.*

The contributors include: ERNEST JONES,  
MELANIE KLEIN, EDWARD GLOVER, A. A. BRILL and FRITZ WITTELS 25s. net

George Allen & Unwin

# *The Encyclopedia of* **CRIMINOLOGY**

*Edited by* Dr. Vernon C. Branham *and* Dr. Samuel B. Kutash

**T**HIS comprehensive work will serve the needs of all those concerned with the problems of crime and criminality. It is a compendium of existing facts and knowledge in criminology and deals at the same time with important current trends and departures in this highly complex field. This has been accomplished through the combined efforts of sixty-one outstanding specialists in a variety of disciplines, including:

PSYCHOLOGY    PSYCHIATRY    SOCIOLOGY    MEDICINE  
LAW            POLICE SCIENCE    EDUCATION    HISTORY  
PENOLOGY    PHILOSOPHY    RELIGION    RESEARCH

*THE ENCYCLOPEDIA OF CRIMINOLOGY* is recommended especially for psychologists, psychiatrists, physicians, college deans, police officers, criminal lawyers, judges, prison officials, social workers, probation and parole officers, educators, religious personnel, sociologists, and crime prevention workers.

*CONTRIBUTORS INCLUDE:* *Hon. Justice* Francis Bergan; Nathaniel Cantor, *Ph.D.*; Hervey Cleckley, *M.D.*; Marshall B. Clinard, *Ph.D.*; Victoria Cranford; *Senator* Thomas C. Desmond; Arthur N. Foxe, *M.D.*; G. I. Giardini, *Ed.D.*; Eleanor Glueck, *Ph.D.*; Sheldon Glueck, *Ph.D.*; Irving W. Halpern; Leland E. Hinsie, *M.D.*; *Hon.* Alexander Holtzoff; *Hon.* J. Edgar Hoover; *Warden* Lewis E. Lawes; V. A. Leonard, *Ph.D.*; Robert M. Lindner, *Ph.D.*; Edwin J. Lukas, *LL.D.*; Elio D. Monachesi, *Ph.D.*; Winfred Overholser, *M.D.*; Michael J. Pescor, *M.D.*; Walter C. Reckless, *Ph.D.*; Orlando F. Scott, *M.D.*; Robert V. Seliger, *M.D.*; Lowell S. Selling, *M.D.*; Herman K. Spector; Edwin H. Sutherland, *Ph.D.*; Negley K. Teeters, *Ph.D.*; Louis P. Thorpe, *Ph.D.*; Joseph G. Wilson, *M.D.*; Fritz Wittels, *M.D.*; Martin L. Wolf, *LL.D.*; Arthur L. Wood, *Ph.D.*

*Publication:* June, 1949.

Approx. 500,000 words.

\$12.00

**PHILOSOPHICAL LIBRARY, Publishers,**  
15 East 40th Street, Dept. 361, New York 16, N.Y., U.S.A.

# ADLARD & SON

LIMITED

BARTHOLOMEW PRESS  
DORKING — SURREY



**PRINTERS  
OF THIS ::  
:: JOURNAL**

ESTIMATES SUBMITTED PROMPTLY

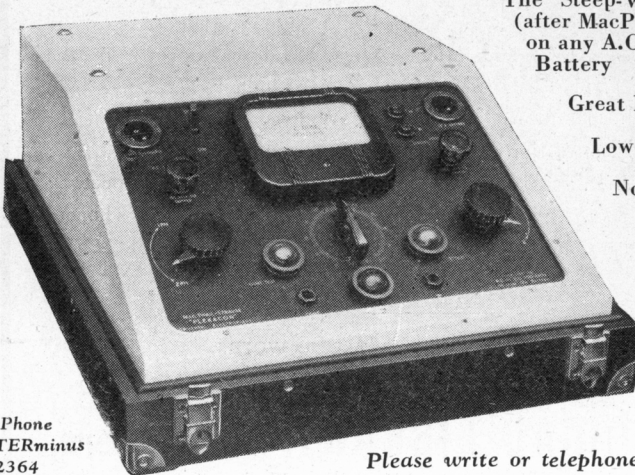
FOUNDED IN 1766, the Firm has continued uninterrupted, and is able to undertake **ALL CLASSES OF PRINTING.**

The Staff is Specially Trained in the production of all printed matter connected with **Private Hospitals and Homes, Medical, Scientific and other Institutions.**

Regd. Offices: 194/200 BISHOPSGATE, E.C. 2.

Tel.: DORKING 2896.

## The PLEXACON Universal Electroplexy Unit —the Psychiatrist's instrument of choice



The 'Steep-Wave' Electroplexy Unit (after MacPhail & Strauss) operates on any A.C. or D.C. Supply or 12v. Battery

Great Electrode Simplification

Lowest Traumatic Incidence

No Timing Gear or Valves

Dosage Independent  
of Supply Conditions

Absolute Dosage

Dependable

Portable

'Phone  
TERminus  
2364

Please write or telephone for further particulars

**THERATRONICS Ltd. (Dept. B. 1), 6 Argyle Walk, London, W.C. 1**

**MENTAL HOSPITALS, INSTITUTIONS, HOMES, ETC.**

**ST. ANDREW'S HOSPITAL  
FOR NERVOUS AND MENTAL  
DISORDERS  
NORTHAMPTON**

*President:* THE MOST HON. THE MARQUESS OF EXETER, K.G., C.M.G., A.D.C.

*Medical Superintendent:* THOMAS TENNENT, M.D., F.R.C.P., D.P.H., D.P.M.

This Registered Hospital is situated in 130 acres of park and pleasure grounds. Voluntary patients who are suffering from incipient mental disorders or who wish to prevent recurrent attacks of mental trouble, temporary patients, and certified patients of both sexes are received for treatment. Careful clinical, bio-chemical, bacteriological, and pathological examinations. Private rooms with special nurses, male or female, in the Hospital or in one of the numerous villas in the grounds of the various branches can be provided.

**WANTAGE HOUSE**

This is a Reception Hospital in detached grounds with a separate entrance, to which patients can be admitted. It is equipped with all the apparatus for the complete investigation and treatment of Mental and Nervous Disorders by the most modern methods; insulin treatment is available for suitable cases. It contains special departments for hydrotherapy by various methods, including Turkish and Russian baths, the prolonged immersion bath, Vichy Douche, Scotch Douche, Electrical baths, Plombières treatment, etc. There is an Operating Theatre, a Dental Surgery, an X-Ray Room, an Ultra-Violet Apparatus, and a Department for Diathermy and High-Frequency treatment. It also contains Laboratories for biochemical, bacteriological, and pathological research. Psychotherapeutic treatment is employed when indicated.

**MOULTON PARK**

Two miles from the Main Hospital there are several branch establishments and villas situated in a park and farm of 650 acres. Milk, meat, fruit and vegetables are supplied to the Hospital from the farm, gardens, and orchards of Moulton Park. Occupational therapy is a feature of this branch, and patients are given every facility for occupying themselves in farming, gardening and fruit-growing.

**BRYN-Y-NEUADD HALL**

The seaside house of St. Andrew's Hospital is beautifully situated in a Park of 330 acres at Llanfairfechan, amidst the finest scenery in North Wales. On the North-West side of the Estate a mile of sea-coast forms the boundary. Patients may visit this branch for a short seaside change or for longer periods. The Hospital has its own private bathing house on the seashore. There is trout-fishing in the park.

At all the branches of the Hospital there are cricket grounds, football and hockey grounds, lawn tennis courts (grass and hard courts), croquet grounds, golf courses, and bowling greens. Ladies and gentlemen have their own gardens, and facilities are provided for handicrafts, such as carpentry, etc.

For terms and further particulars apply to the Medical Superintendent (Telephone No. 2356 and 2357 Northampton), who can be seen in London by appointment.

**HEIGHAM HALL, NORWICH**

**PRIVATE MENTAL HOME**

for Nervous and Mental illness. All forms of treatment available. Fees from 5 gns. per week upwards, according to requirements. Vacancies occasionally exist at reduced fees on the recommendation of the patient's own physician.

**Apply to Dr. J. A. SMALL.**

TELEPHONE: NORWICH 20080.

**LAVERSTOCK HOUSE SALISBURY  
WILTS**

**PRIVATE MENTAL HOME FOR LADIES AND GENTLEMEN**

Completely up to date. Lovely house and grounds (18 acres). Certified and uncertified cases taken. Facilities for going to the seaside.

**ESTABLISHED OVER 200 YEARS**

Apply to the Med. Supt. for illustrated brochure.

Tel.: SALISBURY 2612.

## *In depressive states . . .*

### **the central nervous stimulant of choice**

**I**N DEPRESSIVE conditions 'Dexedrine' may be relied on to effect a remarkable improvement in mood and outlook, and to aid the patient in regaining a normal grip on life and living. The striking preponderance of its central nervous effect over its weak peripheral activity makes

'Dexedrine' virtually a single-action drug. Patients are ordinarily spared the disturbing consciousness of 'drug stimulation', and thus 'Dexedrine' is especially suitable for the highly-strung, the emotionally unstable, convalescents, men and women undergoing the climacteric, and the aged.

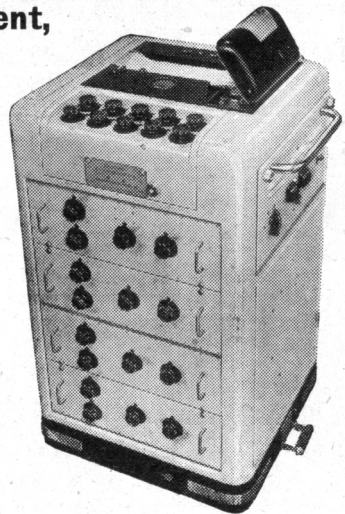
● Available for prescription in packs of 24 tablets. Samples and literature on request.

## **'DEXEDRINE'** TABLETS (5 mg. dextro-amphetamine sulphate)

**MENLEY & JAMES, LTD., 123 Coldharbour Lane, London, S.E.5**  
For Smith Kline & French International Co., owner of the Trade Mark.

D4S

**This highly distinguished instrument, the mains-operated Marconi ELECTRO - ENCEPHALOGRAPH makes possible a thorough investigation into cerebral conditions arising from injury or pathological abnormalities**



FULL DETAILS AVAILABLE ON REQUEST FROM DEPT. 33MS

# **MARCONI INSTRUMENTS LTD**

**ELECTRO-MEDICAL APPARATUS**

**ST. ALBANS, HERTFORDSHIRE**

**Telephone: ST. ALBANS 6161/5**

Northern Office: 30 ALBION STREET, HULL

Phone: Hull 16144

Western Office: 10 PORTVIEW ROAD, AVONMOUTH

Phone: Avonmouth 438

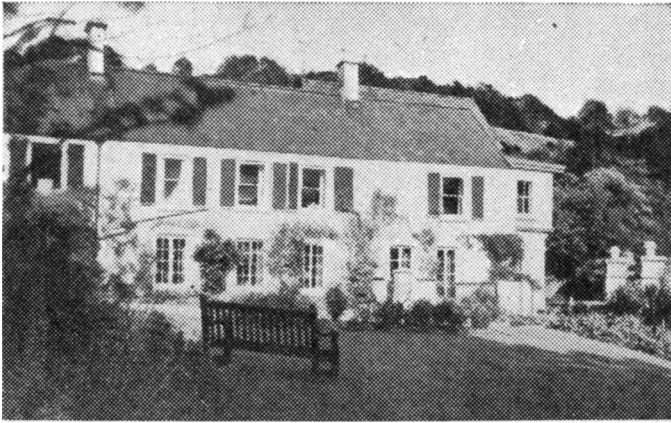
Southern Office & Showrooms: 109 EATON SQUARE, LONDON, S.W.1

Phone: Sloane 8615



# BARNWOOD HOUSE

## GLOUCESTER



CRICKLEY COURT—ONE OF THE SEPARATE VILLAS

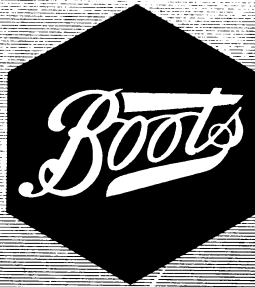
**A** REGISTERED HOSPITAL for the CARE and TREATMENT of LADIES and GENTLEMEN suffering from NERVOUS and MENTAL DISORDERS. Within two miles of the Western and London Midland Regional Railway Stations at Gloucester, the Hospital is easily accessible by rail from London and all parts of the United Kingdom. It is beautifully situated at the foot of the Cotswold Hills, and stands in its own grounds of over 300 acres. Voluntary Patients of both sexes are also received for treatment. Special accommodation is also provided at three villa residences, all of which stand in their own grounds and are entirely separate from the main Hospital. All the most modern methods of treatment including electric shock and prefrontal leucotomy are used.

*For Terms, etc., apply to*

**G. W. T. H. FLEMING, M.R.C.S., L.R.C.P., D.P.M.,**  
**Physician Superintendent,**

*who may be seen in London by appointment*

TELEPHONE: No. 66207 GLOUCESTER



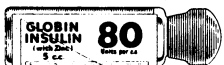
## Insulin preparations



### Insulin-Boots

A sterile solution of pure crystalline insulin. Its action is rapid in onset, lowering the blood sugar level markedly soon after injection. As the effect is not sustained it is often convenient to give Insulin with the longer acting Protamine Zinc Insulin. Injection of Insulin-Boots is the treatment of choice in hyperglycaemia.

20 units per ml. 5 ml. and 10 ml. and 25 ml. vials.  
40 units per ml. 5 ml. and 10 ml. vials.  
80 units per ml. 5 ml. and 10 ml. vials.



### Globin Insulin (*with zinc*)-Boots

A longer acting insulin with a duration of effect and rapidity of onset midway between that of Insulin and Protamine Zinc Insulin. Its action lasts for about 24 hours, and with some modification of diet many cases of diabetes can be controlled with one injection a day.

40 units per ml. 5 ml. vials.  
80 units per ml. 5 ml. vials.



### Protamine Zinc Insulin-Boots

A stabilised suspension of protamine insulin with zinc, of low solubility. Absorption takes place very slowly, the effect of a single dose being spread over more than 24 hours. In its gentle, steady action, Protamine Zinc Insulin imitates the natural secretion of the islets and minimises the risk of hypoglycaemia.

40 units per ml. 5 ml. and 10 ml. vials.  
80 units per ml. 5 ml. vials.

*Literature and further information from the Medical Department*

**Boots Pure Drug Company Ltd. Nottingham England**



# **ELIXIR GABAIL**

(BROMO-VALERIANATE)

**The Ideal Sedative in all Nervous Affections**

Elixir Gabail combines the sedative action of Bromide and Chloral Hydrate with the nervine and anti-spasmodic deodorised Valerianate. Pharmaceutically it is as pleasant and palatable as it is efficacious from the therapeutic standpoint, the disagreeable odour and flavour of the Valerian having been completely removed without in any way impairing its therapeutic value.

**In Hysteria and Psychasthenia it relieves nervous excitement and produces a calm state of mind that is conducive to rapid recovery. It is also of value in states of temporary emotional excitement, in Hypochondriasis and Melancholia.**

**Dosage:** One tablespoonful in water twice or thrice daily. As a hypnotic: two tablespoonfuls in water at bedtime.

Supplied in bottles of 187 c.c., 16 ozs., and in bulk for Hospital use.

*Literature and Samples on request.*

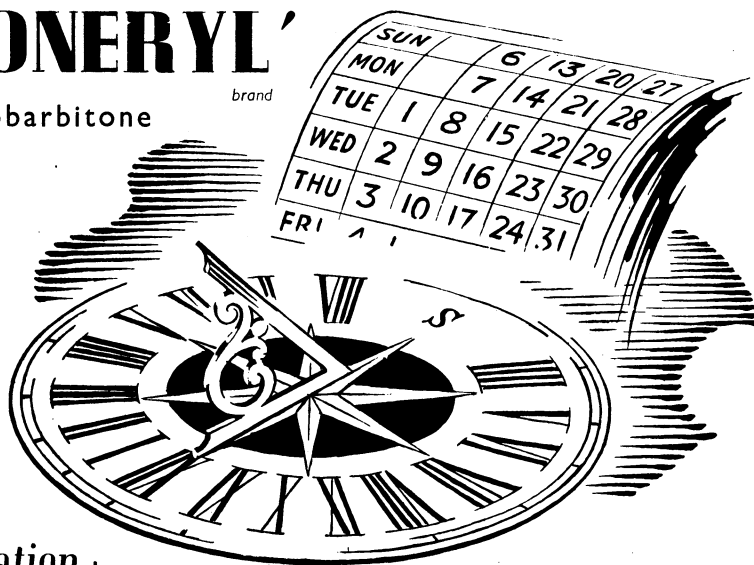
**The ANGLO-FRENCH DRUG Co. Ltd.**  
**11-12, Guilford Street, London, W.C. 1**

trade mark

**'SONERYL'**

brand

butobarbitone



short

sedation to

*p r o l o n g e d    n a r c o s i s*

One of the advantages of 'Soneryl' is the ease with which, by graduating the dose, the degree of action may be varied from the mildly sedative to the deeply hypnotic.

This is of particular interest in psychiatric practice for it enables the one drug to be used as a hypnotic in all the mental states from simple anxiety to intractable psychosis. It may be given for long periods with minimal side effects.

Generally 'Soneryl' is given orally in tablets (grains  $1\frac{1}{2}$  in each), but for cases in which it is impracticable to give the drug by mouth, suppositories containing three, five or ten grains of 'Soneryl' are available.

Tablets in containers of  
12, 25, 100, and 500

Suppositories of gr. 3, gr. 5,  
and gr. 10, in boxes of 5



manufactured by

**MAY & BAKER LTD**

distributors

**PHARMACEUTICAL SPECIALITIES (MAY & BAKER) LTD. DAGENHAM**

47228n

OUR MEDICAL INFORMATION  
DIVISION WILL BE PLEASED TO  
SEND A COPY OF THE MEDICAL  
BOOKLET 'SONERYL' ON REQUEST

[Facing first matter]