

# Pitt-Hopkins Syndrome: A Unique Case Study



INS is approved by the American Psychological Association to sponsor Continuing Education for psychologists. INS maintains responsibility for this program and its content.

Alexander Tan,<sup>1,2</sup> Kimberly Goodspeed,<sup>1,2</sup> AND Veronica Bordes Edgar<sup>1,2</sup>

<sup>1</sup>Children's Health Children's Medical Center, Dallas, Texas

<sup>2</sup>University of Texas Southwestern Medical Center, Dallas, Texas

(RECEIVED November 12, 2017; FINAL REVISION May 4, 2018; ACCEPTED July 2, 2018)

## Abstract

**Objectives:** Pitt-Hopkins syndrome (PTHS) is a rare genetic disorder caused by insufficient expression of the *TCF4* gene. Most cases are characterized by severe intellectual disability, absent speech, motor delays, and autism spectrum disorder. Many have abnormal brain imaging, dysmorphic facial features, and medical comorbidities: myopia, constipation, epilepsy, and apneic spells. The present case study expands existing understanding of this disorder by presenting a unique phenotype with higher cognitive abilities and fewer medical comorbidities. **Methods:** The present case study reports on a 13-year-old, Caucasian male with a recent diagnosis of PTHS following genetic testing (i.e., whole exome sequencing). He was referred for a neuropsychological evaluation to document his neurocognitive functioning to assist with intervention planning. **Results:** Evaluation of intellectual, attention/executive, memory, visual-motor/fine-motor, academic, adaptive, and emotional/behavioral functioning revealed global impairment across all areas of functioning. However, he demonstrated abilities beyond what has been detailed in the literature, including use of full sentences, capacity to learn and solve novel problems, basic academic functioning, and independent ambulation. **Conclusions:** Children with PTHS may demonstrate a spectrum of abilities beyond what has been documented in the literature thus far. Failure to recognize this spectrum can result in late identification of an accurate diagnosis. (*JINS*, 2018, 24, 995–1002)

**Keywords:** Pitt-Hopkins, Genetic, Developmental delay, Autism spectrum disorder, Intellectual disability, Pediatric

## INTRODUCTION

Pitt-Hopkins syndrome (PTHS) is a rare genetic disorder with no cure caused by insufficient expression of the *TCF4* gene found on chromosome 18q21.2 (Amiel et al., 2007). Since the *TCF4* gene was identified in 2007, the genetic etiology of PTHS has been associated with an autosomal dominant *de novo* molecular variant leading to haploinsufficiency of the *TCF4* gene (Zweier et al., 2007). Transcription Factor 4 (TCF4), the protein product of the *TCF4* gene, is believed to be involved in brain development and neuronal differentiation (Forrest, Hill, Quantock, Martin-Rendon, & Blake, 2014). While the exact prevalence of PTHS is unknown, Rosenfeld et al. (2009) estimated that the population frequency of PTHS due to 18q21 microdeletion is 1:34,000 to 1:41,000; however, approximately 500 individuals have been identified with the disorder worldwide (Sweatt, 2013).

PTHS was first described in 1978 in two individuals sharing similar characteristics, including dysmorphic facial features,

clubbed fingers, abnormal breathing, and developmental delay (Pitt & Hopkins, 1978). Since then, details regarding the clinical phenotype of PTHS have continued to be described in the literature (Amiel et al., 2007; de Winter et al., 2016; Marangi et al., 2011; Zweier et al., 2008). Characteristic craniofacial features (e.g., bitemporal narrowing, upslanting palpebral fissures, wide nasal bridge, prominent ears, and broad mouth) and other physical features (e.g., fetal finger pads, palmar creases, and postnatal growth restriction and microcephaly) are frequently seen (de Winter et al., 2016). Additionally, common medical comorbidities, including constipation (in severe cases, Hirschsprung's disease and intestinal malrotation; 70%); early onset myopia (54%), and strabismus (49%); unique breathing patterns of hyperventilation followed by apnea (48%); and/or recurrent seizures (38%) have been reported in individuals with PTHS (Amiel et al., 2007; Brockschmidt et al., 2011; Goodspeed et al., 2018; Hasi et al., 2011; Ouvrier, 2008; Zweier et al., 2007).

Neuroimaging often demonstrates non-specific abnormalities including dysplasia of the corpus callosum, bulging of the caudate nuclei, enlarged asymmetric ventricles, and cerebral atrophy, but no pathognomonic finding has been described (Andrieux et al., 2008; de Pontual et al., 2009;

Correspondence and reprint requests to: Alexander Tan, Department of Psychiatry, University of Texas Southwestern Medical Center, 5323 Harry Hines Blvd., Dallas, TX 75390. E-mail: alexandertanphd@gmail.com

Giurgea et al., 2008; Peippo et al., 2006; Stavropoulous, MacGregor, & Yoon, 2010; Zweier et al., 2008). Neurodevelopmentally, most cases of PTHS are characterized by severe intellectual disability (ID), global developmental delay, and comorbid autism spectrum disorder (ASD; Cody et al., 2015; Sweatt, 2013; Van Balkom, Vuijk, Franssens, Hoek, & Hennekam, 2012). Speech is often absent, and motor delays (independent ambulation after 5 years of age or not at all), ataxia, and motor incoordination occur in the majority of cases.

Stereotypic hand movements characteristic of ASD, including lateral movements, clapping and flapping, and repeated hand–mouth movements, are also common (Brockschmidt et al., 2007; Cody et al., 2015; Van Balkom et al., 2012). Emotional and behavioral problems including anxiety, aggression, and self-injury have also been described in a minority of PTHS cases (Goodspeed et al., 2018; Van Balkom et al., 2012). Additionally, *TCF4* mutations have been identified as genetic risk factors for schizophrenia, leading to higher risk of schizophrenia in individuals with PTHS (Blake et al., 2010). Although many cases of PTHS have been described in the literature, the relationship between neurocognitive profiles and medical comorbidities has not been systematically explored.

Due to the overlapping phenotype of microcephaly, epilepsy, absent speech, and constipation, PTHS is clinically very similar to several other neurodevelopmental disorders, including Angelman syndrome, Rett syndrome, and Mowat-Wilson syndrome (Marangi & Zollino, 2015). Angelman syndrome is the neurodevelopmental disorder that most closely resembles PTHS in phenotype, and 2% of patients initially suspected as having Angelman syndrome were found to have PTHS with a mutation in *TCF4* (Takano, Lyons, Moyes, Jones, & Schwartz, 2010). However, PTHS is associated with distinct facial features not found in Angelman syndrome, including bitemporal narrowing, broad nasal bridge and flared nostrils, and large mouth with prominent M-shaped upper lip (Marangi & Zollino, 2015).

Individuals with PTHS also have been previously diagnosed with Rett syndrome; however, Rett syndrome usually presents as a progressive encephalopathy, with regression of language and motor skills following typical early development, which is not typical of PTHS (Armani et al., 2012). Mowat-Wilson syndrome, while phenotypically similar with regards to severe constipation, also presents with a variety of major malformations not found in PTHS, including heart defects and genitourinary anomalies, in addition to a distinctive pattern of facial anomalies (i.e., uplifted earlobe configuration, hypertelorism, and linear mandible arch; Marangi & Zollino, 2015).

Although a variety of pathogenic variants of *TCF4* have been reported, no studies have found a conclusive link between specific genotypes and phenotypes in PTHS (Zweier et al., 2007). However, when Van Balkom et al. (2012) divided previously published case studies based on proven deletion or mutation, differing trends between the two categories were noted. At that time, higher frequencies were

found in published cases with proven *TCF4* mutations ( $n=49$ ) versus *TCF4* deletions ( $n=17$ ) in breathing abnormalities (71% vs. 35%), epilepsy (39% vs. 29%), non-verbal presentation (92% vs. 77%), and severe ID (100% vs. 82%).

These findings suggest that genetic variability might play a role in neuropsychological and medical outcomes, although larger studies with systematic analysis are needed to further explore this hypothesis. However, these frequencies must also be interpreted with caution, as individual neuropsychological outcomes are not only influenced by gene expression, but also by interactions with social and learning environments (Van Balkom et al., 2012).

Additionally, emerging evidence from *in vitro* studies by Sepp, Pruunsild, and Timmusk (2012) reveals that not all deletions and truncating mutations in *TCF4* result in complete loss of function in all *TCF4* protein products. Functional analyses in this study of PTHS-associated reading frame elongating and missense mutations demonstrated that resulting protein products showed variable mechanisms (i.e., protein destabilization, alteration of dimerization preferences, and loss of DNA-binding and transactivation ability) and extent of impairments (i.e., from subtle deficiencies to dominant-negative effects). This range of impairment was found to be dependent on protein dimer context (i.e., homo- or hetero-dimer) and whether the mutation occurred within the basic helix-loop-helix domain (i.e., outside missense mutations caused no deficiencies). This work represents *in vitro* functional analyses of known human pathogenic variants of *TCF4* and highlights the complexity of this gene, which can be transcribed into many different transcripts of varying lengths. The authors emphasize that size and location of the variant may determine functionality of the resultant protein products. While this research has not been translated to human subjects, it offers a context for hypotheses regarding genotype and phenotype correlations in PTHS.

Although there is no cure for PTHS, research is continuing to identify the molecular pathways affected by *TCF4* mutations, while clinical management includes evaluation and intervention for common medical comorbidities and neuropsychological difficulties. Individuals with PTHS are classically thought to be severely delayed, and formal neuropsychological assessments of patients with PTHS are lacking in the literature. In a sample of 10 children (median age = 10 years), Van Balkom et al. (2012) reported maximum developmental age-equivalents of 15 months on the mental scale and 19 months on the motor scale, as assessed by the Bayley Scales of Infant Development – Second Edition. However, there may be a wider range of cognitive abilities in PTHS than reported in much of the scientific literature. As most patients diagnosed with PTHS are nonverbal and have severe ID irrespective of pathogenic variant, the present case study is to the authors' knowledge the first case of formal neuropsychological assessment in an adolescent with PTHS to date and expands the existing understanding of PTHS by presenting a unique phenotype in an adolescent male with higher cognitive abilities and fewer medical comorbidities.

## METHODS

### Case History

The presenting patient was a 13-year-old, right-handed, Caucasian male diagnosed with PTHS at 12 years of age. He was the product of a full-term gestation and uncomplicated pregnancy and delivery. Early motor developmental milestones were generally acquired within normal limits, as he was noted to sit (8 months), stand (13 months), and walk (14 months) within the typical timeframe. Early language developmental milestones were reportedly delayed, as he had three words at age 2 years, first used two-word phrases at age 4 years, and first used sentences at age 6 years. He received speech therapy beginning at age 2.5 years. The patient had medical history significant for ASD (diagnosed at age 3 years), celiac disease (diagnosed at age 5 years), and attention deficit/hyperactivity disorder (AD/HD) (diagnosed at age 7 years). Vision was noted to be normal, with no history of strabismus. He had a long-standing history of constipation (treated with Miralax), with moderate stool burden regularly shown on abdominal X-rays. He also had history of sleep disturbance (treated with melatonin), including occasional parasomnias with sleepwalking and sleeptalking.

Notably, his medical history was not significant for several common medical comorbidities found in PTHS, including apneic spells and seizures. Academically, the patient was enrolled in 7th grade with an Individualized Education Plan under the primary classification of ID (not formally diagnosed), secondary classification of Speech Impairment, and tertiary classification of Other Health Impairment (AD/HD), and he received his education in a self-contained classroom with special education services (speech therapy and assistive technology). Regarding psychological history, he struggled with frustration tolerance, social communication, restricted/repetitive behaviors, attention/impulsivity, adaptive functioning, and academic progress. Extended family history was significant for ID, learning disabilities, language delays, AD/HD, depression, and anxiety.

### Neuropsychological Assessment

The patient was referred to the University of Texas Southwestern/Children's Health Center for Autism and Developmental Disabilities by his neurologist (coauthor K.G.) for a neuropsychological evaluation (coauthors A.T. and V.B.E.) following diagnosis to document current neurocognitive functioning secondary to his medical condition to assist with planning treatment interventions. He was assessed over the course of a single day and was accompanied by his mother. Relevant information was obtained through a review of available medical and educational records, as well as a clinical interview with his mother.

This information was supplemented by detailed examination of his neurobehavioral repertoire and his performance during a neuropsychological test battery that included the following: Stanford Binet Intelligence Scales, Fifth Edition

(SB-5); Conners' Continuous Performance Test, Third Edition (CPT-3); Drexel Tower of London, Second Edition (TOL-2); Wide Range Assessment of Memory and Learning, Second Edition (WRAML-2); Beery Buktenica Developmental Test of Visual-Motor Integration, Sixth Edition (Beery VMI-6); Grooved Pegboard Test (GPT); and Wechsler Individual Achievement Test, Third Edition (WIAT-III). His mother also completed the Behavior Rating Inventory of Executive Function (BRIEF); Behavior Assessment System for Children, Second Edition (BASC-2); Social Communication Questionnaire (SCQ); Social Responsiveness Scales, Second Edition (SRS-2); and Vineland Adaptive Behavior Scales, Second Edition (Vineland-2). The patient's mother consented to this case report, and data included in this manuscript was obtained in compliance with the Helsinki Declaration.

## RESULTS

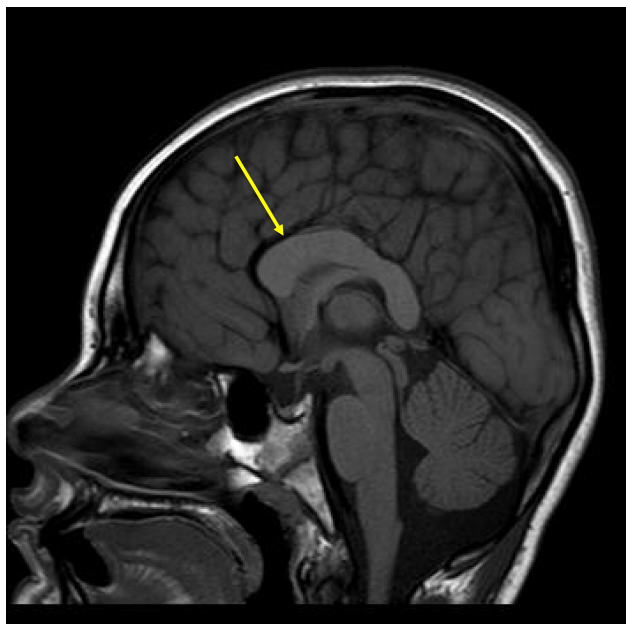
### Neurological Findings

The patient received a late diagnosis of PTHS at age 12 years following whole exome sequencing that identified a *de novo* pathogenic variant of a single base-pair deletion (c.1933delG) in exon 19 of 20 of the *TCF4* gene, resulting in a frameshift mutation, as seen in Figure 1. This finding was in the context of a previously unremarkable chromosomal microarray at age 9 years. The patient's most recent electroencephalography (EEG) at age 12 years revealed no focal, lateralized, or epileptiform abnormalities. During the maximally alert state on the EEG, a medium-amplitude posterior dominant rhythm and low-amplitude frontocentral beta frequencies were observed to be symmetrical and well regulated.

The patient's most recent magnetic resonance imaging (MRI) at age 9 years is shown in Figure 2. Results revealed a dysmorphic corpus callosum that was slightly shorter in anteroposterior dimension and thicker than normal, consistent with corpus callosal abnormalities described in the PTHS literature. The retrocerebellar cerebrospinal fluid spaces were also noted to be prominent, but insignificant, and no additional parenchymal abnormalities were found. Facial features consistent with PTHS were observed, including midface flattening, mild hypotelorism, bulbous nasal tip, and Cupid's bow lip. Appearance was also significant for slightly prominent finger pads and toe pads. No significant findings were found on recent neurological review of systems including cranial nerve, sensory, cerebellar, reflexes, and gait examination. Examination of motor systems revealed hypotonia, but normal strength. Finally, a recent mental status



**Fig. 1.** Representative drawing of the *TCF4* gene to demonstrate location of the patient's mutation (arrow). Numbered boxes represent exons. Exons 1 and 20 (white boxes) are non-coding regions.



**Fig. 2.** Sagittal T1-weighted magnetic resonance imaging demonstrating the dysplastic corpus callosum (arrow).

examination revealed adequate eye contact, normal orientation, good cooperation, and ability to speak in full sentences despite poor articulation and immature content/syntax.

### Behavioral Observations

Behaviorally, the patient presented as a polite child with a pleasant disposition consistent with PTHS. He appeared well-groomed and dressed appropriately for his age and setting. During the interview, the patient was able to provide correct answers in response to standard personal information questions including name, age, birthday, home address, school, grade level, teacher's name, and family members. He transitioned from the interview to one-on-one work with the examiner without difficulty. Rapport was slowly established but easily maintained. Affect was largely appropriate for context. He was generally able to sustain his attention and regulate his behavior throughout the evaluation with hourly breaks. However, he was often impulsive in his responses and used a trial-and-error approach in completing tasks. Additional prompting and increased structure was needed to reduce impulsivity.

The patient was able to speak in complete sentences with occasional articulation difficulties. His expressive language for conversation was limited to answering specific questions by the examiner, and he struggled to engage in conversational exchange. The patient was able to comprehend simple task instructions, but he struggled with multistep instructions. As such, he often required simplification and repetition of instructions and was helped by the use of direct commands over questions.

The patient ambulated independently and presented with a mildly clumsy gait. He preferred his right hand for fine-motor

tasks and used a tripod pencil grip resulting in legible print. The patient presented with difficulties consistent with ASD, including inconsistent nonverbal communication (e.g., limited use of eye contact, gestures, and facial expressions for social interaction), poor social reciprocity, repetitive motor mannerisms (e.g., body rocking), and sensory-seeking behaviors (e.g., visual inspection of objects). Overall, the patient displayed good effort and persistence with behavioral reinforcement (i.e., visual checklists, rewards, and social praise) used for motivation and encouragement. While accommodations made during testing (e.g., increased structure, repetition/simplification of instructions) may have impacted standardization of the assessments, the findings were thought to provide a valid reflection of his current functioning.

### Neurocognitive Testing

The results of neurocognitive testing are presented in Table 1. The patient's overall cognitive ability was documented to be in the Impaired range consistent with a 6-year, 3-month-old level. He demonstrated relative strengths in verbal fluid reasoning and nonverbal visual-spatial processing (i.e., Borderline range). The patient demonstrated impairments in aspects of attention and executive functioning, including vigilance, processing speed, planning, and problem-solving; however, he was able to adapt to a novel problem-solving task. He performed in the Borderline range on both verbal and visual memory tasks. During a story memory task, he was easily overwhelmed by the amount of information, but on a list-learning task requiring practice and repetition, he demonstrated improved learning with repetition and retention of information over time. On both verbal tasks, he was also able to recall the information that he had learned after a period of encoding and consolidation. His performance on visual memory tasks was marked by visual overload for simultaneous processing of information on a design memory task, but was improved when provided thematically related visual cues. Performance on visual memory tasks improved considerably (i.e., greater than one standard deviation) with multiple-choice items for recognition.

The patient exhibited impaired performance on tasks of visual-motor integration, visual-spatial skills, and fine-motor coordination. Assessment of the patient's academic functioning revealed impaired reading, writing, and math skills consistent with his cognitive functioning. However, he was able to identify and write letters, sound out letters of words phonemically, and spell his name and multiple sight words (e.g., "cat" and "be"). He was also able to identify numbers, understand simple math concepts (e.g., most, less, same, longest), recognize shapes, and solve single-digit addition and subtraction problems. Additionally, he was able to demonstrate early reading skills (i.e., rhyming, two-letter phonemes) and solve word problems when accompanying visual information was presented. Additional language testing was not conducted due to time constraints of the evaluation.

**Table 1.** Neurocognitive test results

Measure	Scale	SS	AE/GE
SB-5	Full Scale IQ	57	6:3
	Nonverbal IQ	60	6:6
	Verbal IQ	58	6:0
	Fluid Reasoning	71	7:3
	Knowledge	60	6:0
	Quantitative Reasoning	61	6:3
	Visual-Spatial Processing	71	7:2
	Working Memory	54	5:5
CPT-3	Omissions	103	
	Commissions	107	
	Hit RT	125	
	Variability	98	
TOL-2	Hit RT Block Change	106	
	Total Moves	66	
	Total Correct	78	
	Total Initiation Time	92	
	Total Execution Time	< 60	
WRAML-2	Total Problem-Solving Time	< 60	
	Verbal Memory	74	
	Visual Memory	70	
	Screening Memory	68	
	Verbal Recognition	74	
Beery VMI-6	Visual Recognition	87	
	General Recognition	76	
	Visual-Motor Integration	46	5:6
	Visual Perception	45	5:1
GPT	Motor Coordination	52	5:11
	Dominant (Right)	< 10	
	Non-Dominant (Left)	60	
WIAT-III	Early Reading Skills	—	K.2
	Word Reading	40	< 1.0
	Alphabet Writing Fluency	—	2.5
	Spelling	50	K.7
	Math Problem Solving	55	1.7
	Numerical Operations	46	K.9
	Math Fluency – Addition	40	< 1.0
Math Fluency – Subtraction	49	< 1.0	

SS = standard score; AE = age equivalent; GE = grade equivalent; IQ = intelligence quotient; RT = reaction time.

### Parent-Rated Questionnaires

The results of parent-rated questionnaires are presented in Table 2. Parent ratings revealed clinically significant elevations in difficulties with behavioral regulation, meta-cognition, externalizing problems, and behavioral symptoms, consistent with his previously diagnosed AD/HD. The patient's mother also rated clinically significant difficulties with social communication/interaction and restricted interests/repetitive behaviors on the SRS-2, consistent with his previously diagnosed ASD. Additionally, the raw score on the parent-rated SCQ was 20, which was above the cutoff for ASD set at 15. Finally, adaptive skills were revealed to be largely impaired, including functional communication, activities of daily living, and socialization. However, gross

**Table 2.** Parent-rated questionnaire results

Measure	Scale	T-Score	SS	
BRIEF	Inhibit	83**		
	Shift	67**		
	Emotional Control	75**		
	Initiate	62		
	Working Memory	71**		
	Plan/Organize	65**		
	Organization of Materials	66**		
	Monitor	78**		
	Behavioral Regulation Index	80**		
	Metacognition Index	70**		
BASC-2	General Executive Composite	76**		
	Hyperactivity	89**		
	Aggression	70**		
	Conduct Problems	62*		
	Anxiety	60*		
	Depression	60*		
	Somatization	52		
	Atypicality	70**		
	Withdrawal	57		
	Attention Problems	73**		
	Adaptability	35*		
	Social Skills	43		
	Leadership	38*		
	Activities Daily Living	34*		
	Functional Communication	24**		
Externalizing Problems	76**			
Internalizing Problems	59			
Behavioral Symptoms	76**			
Adaptive Skills	32*			
SRS-2	Social Awareness	70*		
	Social Cognition	79**		
	Social Communication	72*		
	Social Motivation	71*		
	Restricted Interest and Repetitive Behavior	75*		
	Social Communication and Interaction	76**		
	Total Score	76**		
	Vineland-2	Communication	59	
		Daily Living Skills	61	
		Socialization	62	
Motor		94		
Adaptive Behavior Composite		60		

\*at risk.

\*\*clinically significant.

SS = standard score.

motor skills were rated to be age-appropriate and noted as a strength in comparison to the majority of patients with PTHS.

### DISCUSSION

To the authors' knowledge, this unique individual is the first adolescent with PTHS to complete formal neuropsychological assessment. Evaluation of the patient's intellectual,

attention/executive, memory, visual-motor/fine-motor, academic, adaptive, and emotional/behavioral functioning revealed global impairment across all areas of functioning consistent with a formal diagnosis of mild to moderate ID. Additionally, results from caregiver interview, behavioral observations, and direct standardized assessment revealed ongoing difficulties consistent with ASD and AD/HD. However, he demonstrated abilities beyond what has been detailed in the literature (Van Balkom et al., 2012) regarding individuals with PTHS including use of full sentences, capacity to learn and solve novel problems, basic academic functioning, and independent ambulation.

Additionally, he presented with fewer medical comorbidities, as his vision was reportedly normal, and he had never demonstrated any spells of abnormal breathing or seizure-like activity. Thus, this unique case report demonstrates that there may be a wider range of clinical phenotype and neuropsychological functioning in PTHS than previously reported in the scientific literature, suggesting that more individuals may be affected by *TCF4* mutations who exhibit milder symptoms.

Due to the patient's higher cognitive abilities and fewer medical comorbidities, he did not receive a diagnosis of PTHS until age 12. The reason he has attained higher cognitive abilities compared to previously reported cases remains unclear. Many individuals with PTHS due to *TCF4* deletions display similar severity of medical and cognitive phenotypes (Giurgea et al., 2008) compared to individuals with PTHS due to sequence variants of *TCF4*, although this conclusion has not held true in all genotype–phenotype linkage analyses (de Winter et al., 2016; Rosenfeld et al., 2009; Whalen et al., 2012).

Engelen et al. (2003) identified a young male patient with an interstitial deletion of chromosome region 18q21.1 → 18q21.3 by karyotype before the discovery of *TCF4* as the disease-associated gene with PTHS. Similar to the present case study, the child displayed mild cognitive delay, emerging language, independent ambulation, and mild facial anomalies; however, this patient was never given the diagnosis of PTHS, nor did he have the characteristic facial features of PTHS.

Kalscheuer et al. (2008) reported a case with a *de novo* balanced translocation involving *TCF4* and *CHD6* (chromodomain helicase DNA binding protein 6) in an adolescent female patient, a gene which has not been implicated in PTHS. Similar to the present case study, this adolescent female presented with mild to moderate ID, basic academic functioning, minor facial anomalies, ability to speak in full sentences, independent ambulation, and absence of epilepsy or breathing abnormalities. She was not given the diagnosis of PTHS, although disruption of the *TCF4* gene by translocation was presumed to be the cause of her ID.

In combination with emerging evidence from Sepp et al. (2012), comparison with this case study suggests the location of the present patient's single base-pair deletion in the penultimate exon of the gene may have yielded a more functional protein product, leaving a greater number of

unaffected transcripts intact. However, studies investigating genotype and phenotype correlations in this population remain limited, and additional research is needed to elucidate the connection between genetic abnormality, neurological phenotype, and neuropsychological presentation.

Individuals with PTHS require evaluation and management of medical comorbidities (i.e., constipation, myopia, strabismus, apneic spells, seizures, sleep disturbances) in addition to neuropsychological difficulties (i.e., ID, ASD, developmental delays). Successful evaluation and management of such a broad range of symptoms requires a coordinated multidisciplinary team. Because information regarding the range of neuropsychological functioning in various genetic conditions is limited, the ability of neuropsychologists to differentiate between diagnoses of PTHS and other phenotypically similar genetic conditions based on neuropsychological profiles remains limited. However, emerging evidence that a wider range of neuropsychological functioning may be present in these genetic conditions may allow neuropsychologists to contribute to a broader understanding of the link between neurocognitive phenotypes and genetic conditions.

The study of neurocognitive profiles of individuals with monogenic disorders may also provide insight into the underlying neurobiology and connectivity of common neurodevelopmental disorders. Additionally, neuropsychologists play an essential role in assessing the strengths and weaknesses of these individuals and providing recommendations for their care. In the present case, the patient was receiving limited school-based special education services to address significant impairments in cognitive, academic, and behavioral/emotional functioning. However, the neuropsychological evaluation demonstrated increased success for the patient when he was provided with heightened structure and clear expectations, repetition and simplification of instructions, multiple-choice items for recognition, pairing of visual and verbal stimuli, and behavioral reinforcement.

As a result of the evaluation, treatment recommendations included medical service coordination; referrals for speech, occupational, and behavioral therapies; suggestions for educational programming, home-based behavioral management, social skills development, safety planning, and guardianship considerations; and resources for parental support, advocacy, and education. Thus, this case demonstrates the importance of having a treatment team that includes a neuropsychologist to improve quality of life for individuals with PTHS and their families.

PTHS is likely underdiagnosed, and clinicians should use comprehensive genetic testing methods with patients with developmental delays to investigate the possible presence of an underlying genetic etiology. In the present case, chromosomal microarray results were unremarkable, whereas whole exome sequencing identified the *TCF4* deletion. While routine cytogenetic testing (including chromosomal microarray) is indicated in the evaluation of any child with global developmental delay lacking a clear etiology, chromosomal microarray often does not establish a diagnosis of PTHS, and

higher-tier genetic testing with whole exome sequencing or commercially available panels should be considered (Goodspeed et al., 2018; Michelson et al., 2011). In the appropriate setting, whole exome sequencing has been shown to have a higher diagnostic yield when used as second-tier testing in place of less specific testing and reduced overall cost (Green, Rubin, & Olson, 2017; Nolan & Carlson, 2016).

Future research is needed to investigate the medical and neuropsychological profiles in this population to advance understanding of the spectrum of this syndrome, identify clinical biomarkers, and develop novel interventions. Failure to recognize this spectrum can result in late identification of an accurate diagnosis and less comprehensive intervention, but with continued research and awareness of PTHS, a more thorough understanding of the spectrum of PTHS may be developed.

For more information about PTHS, visit the Web site for the Pitt Hopkins Research Foundation, whose mission is to support research dedicated to finding treatments for PTHS and to support the Pitt Hopkins community with resource recommendations, parental support, and the latest medical information (<https://pithopkins.org/>).

## ACKNOWLEDGMENTS

The authors have no conflicts of interest or sources of financial support to disclose. The authors acknowledge the family who allowed us to provide medical care to their beloved child and consented to this case report to contribute to advances in the understanding of PTHS.

## REFERENCES

- Amiel, J., Rio, M., de Pontual, L., Redon, R., Malan, V., Boddart, N., ... Colleaux, L. (2007). Mutations in TCF4, encoding a class I basic helix-loop-helix transcription factor, are responsible for Pitt-Hopkins syndrome, a severe epileptic encephalopathy associated with autonomic dysfunction. *American Journal of Human Genetics*, *80*(5), 988–993.
- Andrieux, J., Lepretre, F., Cuisset, J.M., Goldenberg, A., Delobel, B., Manouvrier-Hanu, S., ... Holder-Espinasse, M. (2008). Deletion 18q21.2q21.32 involving TCF4 in a boy diagnosed by CGH-array. *European Journal of Medical Genetics*, *51*(2), 172–177.
- Armani, R., Archer, H., Clarke, A., Vasudevan, P., Zweier, C., Ho, G., ... Christodoulou, J. (2012). Transcription factor 4 and myocyte enhancer factor 2C mutations are not common causes of Rett syndrome. *American Journal of Medical Genetics Part A*, *158A*(4), 713–719.
- Blake, D.J., Forrest, M., Chapman, R.M., Tinsley, C.L., O'Donovan, M.C., & Owen, M.J. (2010). TCF4, schizophrenia, and Pitt-Hopkins syndrome. *Schizophrenia Bulletin*, *36*(3), 443–447.
- Brockschmidt, A., Filippi, A., Charbel Issa, P., Nelles, M., Urbach, H., Eter, N., ... Weber, R.G. (2011). Neurologic and ocular phenotype in Pitt-Hopkins syndrome and a zebrafish model. *Human Genetics*, *130*(5), 645–655.
- Brockschmidt, A., Todt, U., Ryu, S., Hoischen, A., Landwehr, C., Birnbaum, S., ... Weber, R.G. (2007). Severe mental retardation with breathing abnormalities (Pitt-Hopkins syndrome) is caused by haploinsufficiency of the neuronal bHLH transcription factor TCF4. *Human Molecular Genetics*, *16*(12), 1488–1494.
- Cody, J.D., Sebold, C., Heard, P., Carter, E., Soileau, B., Hasi-Zogaj, M., ... Hale, D.E. (2015). Consequences of chromosome 11q deletions. *American Journal of Medical Genetics*, *169*(3), 265–280.
- de Pontual, L., Mathieu, Y., Golzio, C., Rio, M., Malan, V., Boddart, N., ... Amiel, J. (2009). Mutational, functional, and expression studies of the TCF4 gene in Pitt-Hopkins syndrome. *Human Mutation*, *30*(4), 669–676.
- de Winter, C.F., Baas, M., Bijlsma, E.K., van Heukelingen, J., Routledge, S., & Hennekam, R.C. (2016). Phenotype and natural history in 101 individuals with Pitt-Hopkins syndrome through an internet questionnaire system. *Orphanet Journal of Rare Diseases*, *12*(11), 37.
- Engelen, J.J., Moog, U., Weber, J., Haagen, A.A., van Uum, C.M., & Hamers, A.J. (2003). Deletion of chromosome region 18q21.1 → 18q21.3 in a patient without clinical features of the 18q-phenotype. *American Journal of Medical Genetics Part A*, *119A*(3), 356–359.
- Forrest, M.P., Hill, M.J., Quantock, A.J., Martin-Rendon, E., & Blake, D.J. (2014). The emerging roles of TCF4 in disease and development. *Trends in Molecular Medicine*, *20*(6), 322–331.
- Giurgea, I., Missirian, C., Cacciagli, P., Whalen, S., Fredriksen, T., Gaillon, T., ... Moncla, A. (2008). TCF4 deletions in Pitt-Hopkins Syndrome. *Human Mutation*, *29*(11), E242–E251.
- Goodspeed, K., Newom, C., Morris, M.A., Powell, C., Evans, P., & Golla, S. (2018). Pitt-Hopkins syndrome: A review of current literature, clinical approach, and 23-patient case series. *Journal of Child Neurology*, *33*(3), 233–244.
- Green, E.D., Rubin, E.M., & Olson, M.V. (2017). The future of DNA sequencing. *Nature*, *550*(7675), 179–181.
- Hasi, M., Soileau, B., Sebold, C., Hill, A., Hale, D.E., O'Donnell, L., ... Cody, J.D. (2011). The role of the TCF4 gene in the phenotype of individuals with 18q segmental deletions. *Human Genetics*, *130*(6), 777–787.
- Kalscheuer, V.M., Feenstra, I., Van Ravenswaaij-Arts, C.M., Smeets, D.F., Menzel, C., Ullmann, R., ... Ropers, H.H. (2008). Disruption of the TCF4 gene in a girl with mental retardation but without the classical Pitt-Hopkins syndrome. *American Journal of Medical Genetics Part A*, *146A*(16), 2053–2059.
- Marangi, G., Ricciardi, S., Orteschi, D., Lattante, S., Murdolo, M., Dallapiccola, B., ... Zollino, M. (2011). The Pitt-Hopkins syndrome: Report of 16 new patients and clinical diagnostic criteria. *American Journal of Medical Genetics*, *155A*(7), 1536–1545.
- Marangi, G., & Zollino, M. (2015). Pitt-Hopkins syndrome and differential diagnosis: A molecular and clinical challenge. *Journal of Pediatric Genetics*, *4*(3), 168–176.
- Michelson, D.J., Shevell, M.I., Sherr, E.H., Moeschler, J.B., Gropman, A.L., & Ashwal, S. (2011). Evidence report: Genetic and metabolic testing on children with global developmental delay: Report of the Quality Standards Subcommittee of the American Academy of Neurology and the Practice Committee of the Child Neurology Society. *Neurology*, *77*(17), 1629–1635.
- Nolan, D., & Carlson, M. (2016). Whole exome sequencing in pediatric neurology patients; clinical implications and estimated cost analysis. *Journal of Child Neurology*, *31*(7), 887–894.
- Ouvrier, R. (2008). Hyperventilation and the Pitt-Hopkins syndrome. *Developmental Medicine and Child Neurology*, *50*(7), 481.

- Peippo, M., Simola, K.O., Valanne, L.K., Larsen, A.T., Kahkonen, M., Auranen, M.P., ... Ignatius, J. (2006). Pitt-Hopkins syndrome in two patients and further definition of the phenotype. *Clinical Dysmorphology*, *15*(2), 47–54.
- Pitt, D., & Hopkins, I. (1978). A syndrome of mental retardation, wide mouth and intermittent overbreathing. *Australian Paediatric Journal*, *14*(3), 182–184.
- Rosenfeld, J.A., Leppig, K., Ballif, B.C., Thiese, H., Erdie-Lalena, C., Bawle, E., ... Shaffer, L.G. (2009). Genotype-phenotype analysis of TCF4 mutations causing Pitt-Hopkins syndrome shows increased seizure activity with missense mutations. *Genetics in Medicine*, *11*(11), 797–805.
- Sepp, M., Pruunsild, P., & Timmusk, T. (2012). Pitt-Hopkins syndrome-associated mutations in TCF4 lead to variable impairment of the transcription factor function ranging from hypomorphic to dominant-negative effects. *Human Molecular Genetics*, *21*(13), 2873–2888.
- Stavropoulos, D.J., MacGregor, D.L., & Yoon, G. (2010). Mosaic microdeletion 18q21 as a cause of mental retardation. *European Journal of Medical Genetics*, *53*(6), 396–399.
- Sweatt, J.D. (2013). Pitt-Hopkins Syndrome: Intellectual disability due to loss of TCF4-regulated gene transcription. *Experimental and Molecular Medicine*, *3*(45), e21.
- Takano, K., Lyons, M., Moyes, C., Jones, J., & Schwartz, C.E. (2010). Two percent of patients suspected of having Angelman syndrome have *TCF4* mutations. *Clinical Genetics*, *78*(3), 282–288.
- Van Balkom, I.D., Vuijk, P.J., Franssens, M., Hoek, H.W., & Hennekam, R.C. (2012). Development, cognition, and behaviour in Pitt-Hopkins syndrome. *Developmental Medicine & Child Neurology*, *54*(10), 925–931.
- Whalen, S., Heron, D., Gaillon, T., Moldovan, O., Rossi, M., Devillard, F., ... Giurgea, I. (2012). Novel comprehensive diagnostic strategy in Pitt-Hopkins syndrome: Clinical score and further delineation of the TCF4 mutational spectrum. *Human Mutation*, *33*(1), 64–72.
- Zweier, C., Peippo, M.M., Hoyer, J., Sousa, S., Bottani, A., Clayton-Smith, J., ... Rauch, A. (2007). Haploinsufficiency of TCF4 causes syndromal mental retardation with intermittent hyperventilation (Pitt-Hopkins syndrome). *American Journal of Human Genetics*, *80*(5), 994–1001.
- Zweier, C., Sticht, H., Bijlsma, E.K., Clayton-Smith, J., Boonen, S. E., Fryer, A., ... Rauch, A. (2008). Further delineation of Pitt-Hopkins syndrome: Phenotypic and genotypic description of 16 novel patients. *Journal of Medical Genetics*, *45*(11), 738–744.