



LOOK AGAIN...

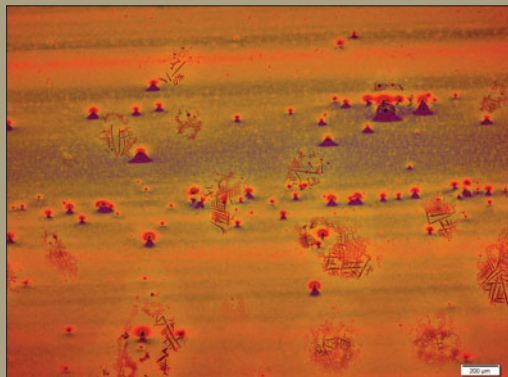
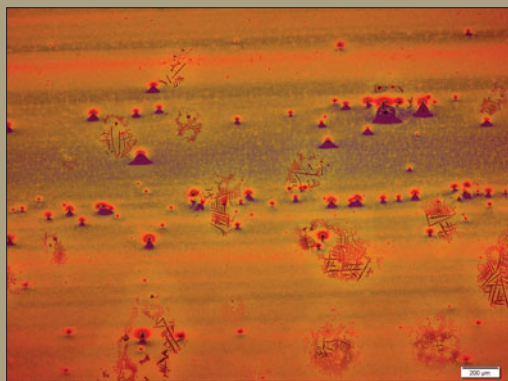
Just for Fun!

See if you can find the 8 differences in each set of images.

Sahara world

This Sahara landscape with mysterious signs was formed by slow evaporation of a low-concentration ZnO-nanorods solution on a vertical fixed SiO₂ substrate. The image with real dimensions of 2.87 mm × 1.04 mm was captured by an optical microscope in bright field mode.

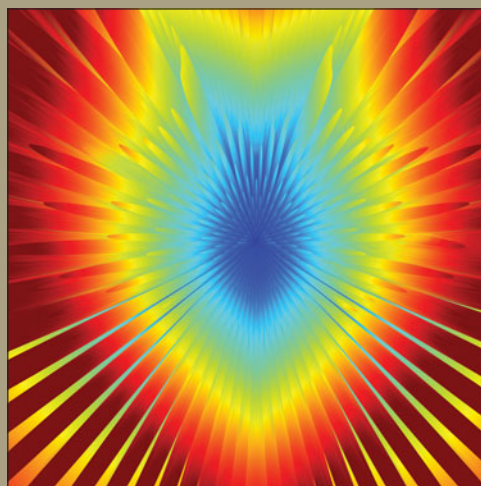
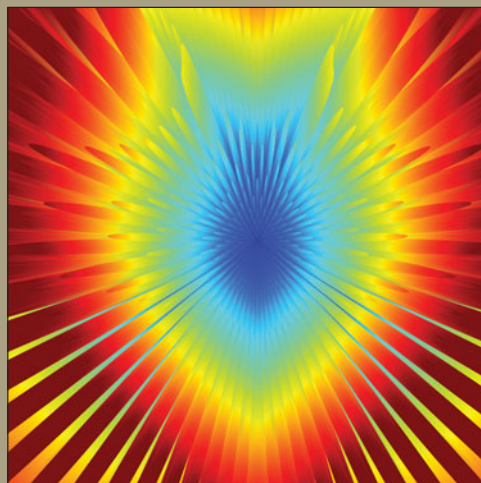
Stefan Thiemann, Friedrich-Alexander-Universität Erlangen-Nürnberg, Germany



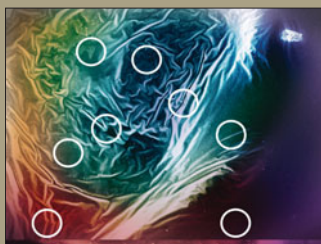
Radiation burst

This nanoscale antenna array radiation pattern simulation shows a detail of grating lobes from a MATLAB model of the possible radiation pattern from a driven square array of carbon nanotubes.

Tim P. Butler, Cambridge University, UK



August 2012 answer key



Answers will be in the February 2013 issue.

Images on the top were submitted to the Materials Research Society "Science as Art" competition. Images on the bottom were modified in Adobe Photoshop for this "Look Again" activity.