

VOL. LIII, NO. 220.

JANUARY, 1907.

THE JOURNAL

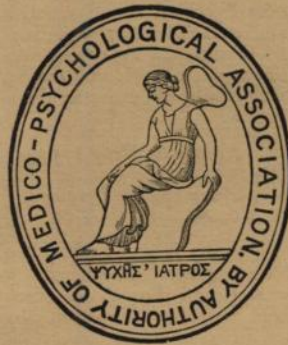
OF
MENTAL SCIENCE.

EDITORS

Henry Rayner, M.D. A. R. Urquhart, M.D.
Conolly Norman, F.R.C.P.I. J. Chambers, M.D.

ASSISTANT EDITOR :

J. R. Lord, M.B.



LONDON :

J. & A. CHURCHILL,
7, GREAT MARLBOROUGH STREET.

MSS. and Correspondence to be sent to Editors, 16, Queen Anne Street,
London, W. Printed Matter to be sent to Messrs. Churchill. Change
of Address of Members to be sent to the General Secretary
and to Messrs. Adlard and Son.

Published Quarterly, price Five Shillings net; or Twenty Shillings
per annum net.

JOURNAL OF MENTAL SCIENCE.

Exchange Journals.

British.

Asylum News; Brain; British Medical Journal; Bristol Medical-Chirurgical Journal; Dublin Medical Journal; Edinburgh Medical Journal; Glasgow Medical Journal; Hospital; Lancet; Mind; Proceedings of the Society for Psychical Research; Scottish Medical and Surgical Journal; Review of Neurology and Psychiatry; British Journal of Psychology.

American.

Alienist and Neurologist; Journal of Insanity; Journal of Medical Sciences; Journal of Comparative Neurology; Journal of Mental and Nervous Diseases; Journal of Mental Pathology; Journal of Psychology; Medicine; Monthly Cyclopædia of Practical Medicine; Psychological Review; Quarterly Journal of Inebriety; Reports of the Smithsonian Institute; Transactions of the American Medico-Psychological Association; Universal Medical Journal.

French.

Archives Anthropologie Criminelle; Annales Médico-Psychologiques; Annales des Sciences Psychiques; Archives de Neurologie; Gazette des Hôpitaux; Journal de Médecine de Bordeaux; Nouvelle Iconographie de la Salpêtrière; Polybiblion; Progrès Médicale; Revue Philosophique; Revue de Psychiatrie; Revue Scientifique; Revue de l'Hypnotisme; Bulletin de l'Institut Psychique.

Belgian.

Bulletin de la Société de Médecine Mentale de Belgique.

German.

Allgemeine Zeitschrift für Psychiatrie; Archiv für Psychiatrie und Nervenkrankheiten; Centralblatt für Anthropologie; Der Irrenfreund; Jahrbücher für Psychiatrie; Kraepelin's Psychologische Arbeiten; Monatsschrift für Psychiatrie und Neurologie; Neurologisches Centralblatt; Philosophische Studien; Psychiatrische Wochenschrift; Zeitschrift für Psychologie.

Italian.

Annali di Freniatria; Annali di Neurologia; Archivio di Psichiatria; Il Manicomio Moderno; La Psichiatria; Rivista di Patologia nervosa e mentale; Rivista Sperimentale di Freniatria; Rivista Neuropatologia Psichiatria; Rivista di Psicologia.

Russian.

Archiv Psychiatrii, Nevrologii, i Soudebnoi Psychopatologii; Obozrenie Psychiatrii, Nevrologii, i Experimentalnoi Psychologii; Voprosi Nervno-psychitscheckoi Medizini; Voprosi filosofii i psychologu.

Books and Pamphlets Received.

Studies in Clinical Psychiatry, *Lewis C. Bruce*; Hypnotism and Psychotherapy, *Auguste Forel* (translated by H. W. Armet); Report of the Department of Neurology at Harvard Medical School; Race Culture or Race Suicide, *R. R. Rentoul*; History of Bethel Hospital, *Sir Frederic Bateman and Walter Rye*; Zur Psychopathologie des Landstreichers, *Karl Williams*; Die Funktionen des Zentralen Nervensystems, *M. Lewandowsky*; The Unit of Strife, *E. K. Garrod*; The Hygiene of Mind, *Clouston*.

THE
MEDICO-PSYCHOLOGICAL ASSOCIATION
OF GREAT BRITAIN AND IRELAND.

THE COUNCIL AND OFFICERS, 1906-7.

PRESIDENT.—ROBERT JONES, M.D., B.S., F.R.C.S.
PRESIDENT ELECT.—PETER W. MACDONALD, M.D.
EX-PRESIDENT.—T. OUTTERSON WOOD, M.D.
TREASURER.—H. HAYES NEWINGTON, F.R.C.P.Ed.
EDITORS OF JOURNAL. { HENRY RAYNER, M.D.
 A. R. URQUHART, M.D.
 CONOLLY NORMAN, F.R.C.P.I.
 JAMES CHAMBERS, M.D.
ASSISTANT EDITOR (not Member of Council).—JOHN R. LORD, M.B.
DIVISIONAL SECRETARY FOR SOUTH-EASTERN DIVISION.—R. H. STEEN, M.D.
DIVISIONAL SECRETARY FOR SOUTH-WESTERN DIVISION.—H. T. S. AVELINE, L.R.C.P.
DIVISIONAL SECRETARY FOR NORTHERN AND MIDLAND DIVISION.
 BEDFORD PIERCE, M.D.
DIVISIONAL SECRETARY FOR SCOTLAND.—LEWIS C. BRUCE, M.D.
DIVISIONAL SECRETARY FOR IRELAND.—WILLIAM R. DAWSON, M.D.
GENERAL SECRETARY.—C. HUBERT BOND, M.D., D.Sc.
SECRETARY OF EDUCATIONAL COMMITTEE.—MAURICE CRAIG, M.D. (appointed by
 Educational Committee, but with seat on Council).
REGISTRAR.—ALFRED MILLER, M.B.

MEMBERS OF COUNCIL.

REPRESENTATIVE.		REPRESENTATIVE.
DAVID BOWER	}	MICHAEL J. NOLAN } IRELAND. THOMAS DRAPES }
DAVID G. THOMSON		
JOHN TURNER		
ERNEST W. WHITE	}	NOMINATED. FLETCHER BEACH JOSEPH S. BOLTON THOMAS S. CLOUSTON WILLIAM GRAHAM GEORGE H. SAVAGE B. PERCY SMITH
P. W. MACDONALD		
EDWIN GOODALL		
SAMUEL EDGERLEY	}	}
JOHN A. EWAN		
T. W. McDOWALL		
ADAM R. TURNBULL	}	}
DAVID YELLOWLEES		
[The above form the Council.]		

AUDITORS. { FRANCIS H. EDWARDS, M.D.
 THEO. B. HYSLOP, M.D.

EXAMINERS.

ENGLAND { ROBERT JONES, M.D.
 MAURICE CRAIG, M.D.
SCOTLAND { WILLIAM A. PARKER, M.B.
 LANDEL R. OSWALD, M.B.
IRELAND { THOMAS DRAPES, M.B.
 WILLIAM R. DAWSON, M.D.

Examiners for the Nursing Certificate of the Association:
 CONOLLY NORMAN; ADAM R. TURNBULL; EDMUND B. WHITCOMBE.

PARLIAMENTARY COMMITTEE.

FLETCHER BEACH. GEO. F. BLANDFORD. C. HUBERT BOND. DAVID BOWER (<i>Secretary</i>). LEWIS C. BRUCE. JOHN. CARSWELL. DAVID M. CASSIDY. THOS. S. CLOUSTON. WM. R. DAWSON. WILLIAM DOUGLAS. A. D. O'C. FINEGAN. H. GARDINER HILL. CHAS. K. HITCHCOCK. THEO. B. HYSLOP. J. CARLYLE JOHNSTONE. ROBERT JONES. H. ROOKE LEY. T. W. G. McDOWALL.	CHAS. A. MERCIER. H. HAYES NEWINGTON. CONOLLY NORMAN. EVAN POWELL. HENRY RAYNER. GEO. H. SAVAGE. B. PERCY SMITH. J. BEVERIDGE SPENCE. DAVID G. THOMSON. T. SEYMOUR TUKE. ALEX. R. URQUHART. LIONEL A. WEATHERLY. E. B. WHITCOMBE. ERNEST W. WHITE (<i>Chairman</i>). JOSEPH WIGLESWORTH. T. OUTTERSON WOOD. DAVID YELLOWLEES.
--	---

EDUCATIONAL COMMITTEE.

FLETCHER BEACH.	CONOLLY NORMAN.
C. HUBERT BOND.	BEDFORD PIERCE.
LEWIS C. BRUCE.	WILLIAM RAWES.
THOS. S. CLOUSTON.	HENRY RAYNER.
MAURICE CRAIG (<i>Secretary</i>).	GEORGE M. ROBERTSON.
WILLIAM R. DAWSON.	EDWARD C. ROGERS.
WILLIAM GRAHAM.	JAMES RORIE.
JOHN G. HAVELOCK.	GEORGE H. SAVAGE.
THEO. B. HYSLOP.	T. CLAYE SHAW.
J. CARLYLE JOHNSTONE.	R. PERCY SMITH.
ROBERT JONES.	J. BEVERIDGE SPENCE.
WALTER S. KAY.	ROBERT H. STEEN.
PETER W. MACDONALD.	FREDERIC R. P. TAYLOR.
THOS. W. McDOWALL.	T. SEYMOUR TUKE.
S. B. MACPHAIL.	ADAM R. TURNBULL.
HAMILTON G. MARR.	LIONEL A. WEATHERLY.
WILLIAM F. MENZIES.	EDMUND B. WHITCOMBE.
C. A. MERCIER (<i>Chairman</i>).	ERNEST W. WHITE.
WILLIAM J. MICKLE.	JAMES B. WHITWELL.
ALFRED MILLER.	JOSEPH WIGLESWORTH.
GILBERT E. MOULD.	J. KENNEDY WILL.
H. HAYES NEWINGTON.	T. OUTTERSON WOOD.
MICHAEL J. NOLAN.	DAVID YELLOWLEES.

LIBRARY COMMITTEE.

FLETCHER BEACH.	T. OUTTERSON WOOD.
HENRY RAYNER.	ROBERT H. COLE

LIST OF CHAIRMEN.

1841. Dr. Blake, Nottingham.
 1842. Dr. de Vitré, Lancaster.
 1843. Dr. Conolly, Hanwell.
 1844. Dr. Thurnam, York Retreat.
 1847. Dr. Wintle, Warneford House, Oxford.
 1851. Dr. Conolly, Hanwell.
 1852. Dr. Wintle, Warneford House.

LIST OF PRESIDENTS.

1854. A. J. Sutherland, M.D., St. Luke's Hospital, London.
 1855. J. Thurnam, M.D., Wilts County Asylum.
 1856. J. Hitchman, M.D., Derby County Asylum.
 1857. Forbes Winslow, M.D., Sussex House, Hammersmith.
 1858. John Conolly, M.D., County Asylum, Hanwell.
 1859. Sir Charles Hastings, D.C.L.
 1860. J. C. Bucknill, M.D., Devon County Asylum.
 1861. Joseph Lalor, M.D., Richmond Asylum, Dublin.
 1862. John Kirkman, M.D., Suffolk County Asylum.
 1863. David Skæ, M.D., Royal Edinburgh Asylum.
 1864. Henry Munro, M.D., Brook House, Clapton.
 1865. Wm. Wood, M.D., Kensington House.
 1866. W. A. F. Browne, M.D., Commissioner in Lunacy for Scotland.
 1867. C. A. Lockhart Robertson, M.D., Haywards Heath Asylum.
 1868. W. H. O. Sankey, M.D., Sandywell Park, Cheltenham.
 1869. T. Laycock, M.D., Edinburgh.
 1870. Robert Boyd, M.D., County Asylum, Wells.
 1871. Henry Maudsley, M.D., The Lawn, Hanwell.
 1872. Sir James Coxe, M.D., Commissioner in Lunacy for Scotland.
 1873. Harrington Tuke, M.D., Manor House, Chiswick.
 1874. T. L. Rogers, M.D., County Asylum, Rainhill.

1875. J. F. Duncan, M.D., Dublin.
 1876. W. H. Parsey, M.D., Warwick County Asylum.
 1877. G. Fielding Blandford, M.D., London.
 1878. Sir J. Crichton-Browne, M.D., Lord Chancellor's Visitor.
 1879. J. A. Lush, M.D., Fisherton House, Salisbury.
 1880. G. W. Mould, M.R.C.S., Royal Asylum, Cheadle.
 1881. D. Hack Tuke, M.D., London.
 1882. Sir W. T. Gairdner, M.D., Glasgow.
 1883. W. Orange, M.D., State Criminal Lunatic Asylum, Broadmoor.
 1884. Henry Rayner, M.D., County Asylum, Hanwell.
 1885. J. A. Eames, M.D., District Asylum, Cork.
 1886. Geo. H. Savage, M.D., Bethlem Royal Hospital.
 1887. Fred. Needham, M.D., Barnwood House, Gloucester.
 1888. T. S. Clouston, M.D., Royal Edinburgh Asylum.
 1889. H. Hayes Newington, M.R.C.P., Ticehurst, Sussex.
 1890. David Yellowlees, M.D., Gartnavel Asylum, Glasgow.
 1891. E. B. Whitcombe, M.R.C.S., City Asylum, Birmingham.
 1892. Robert Baker, M.D., The Retreat, York.
 1893. J. Murray Lindsay, M.D., County Asylum, Derby.
 1894. Conolly Norman, F.R.C.P.I., Richmond Asylum, Dublin.
 1895. David Nicolson, M.D., C.B., State Criminal Lunatic Asylum, Broadmoor.
 1896. William Julius Mickle, M.D., Grove Hall Asylum, Bow.
 1897. Thomas W. McDowall, M.D., Morpeth, Northumberland.
 1898. A. R. Urquhart, M.D., James Murray's Royal Asylum, Perth.
 1899. J. B. Spence, M.D., Burntwood Asylum, nr. Lichfield, Staffordshire.
 1900. Fletcher Beach, M.B., 79, Wimpole Street, W.
 1901. Oscar T. Woods, M.D., District Asylum, Cork, Ireland.
 1902. J. Wiglesworth, M.D., F.R.C.P., Rainhill Asylum, near Liverpool.
 1903. Ernest W. White, M.B., City of London Asylum, Dartford, Kent.
 1904. R. Percy Smith, M.D., F.R.C.P., 36, Queen Anne Street, Cavendish Square, London, W.
 1905. T. Outterson Wood, M.D., F.R.C.P., 40, Margaret Street, Cavendish Square, London, W.
 1906. Robert Jones, M.D., Claybury Asylum, Woodford Bridge, Essex.

HONORARY MEMBERS.

1896. Allbutt, T. Clifford, M.D., F.R.C.P., Regius Professor of Physic, Univ. Camb., St. Radegund's, Cambridge.
 1881. Benedikt, Prof. M., Franciskaner Platz 5, Vienna.
 1900. Blumer, G. Alder, M.D., L.R.C.P. Edin., Butler Hospital, Providence, U.S.A. (*Ord. Mem.*, 1890.)
 1900. Bresler, Johannes, M.D., Kraschnitz, Schlesien, Germany. (*Corr. Mem.*, 1896.)
 1881. Brosius, Dr., Bendorf-Sayn, near Coblenz, Germany.
 1876. Browne, Sir J. Crichton-, M.D. Edin., F.R.S., Lord Chancellor's Visitor, New Law Courts, Strand, W.C. (*PRESIDENT*, 1878.)
 1902. Brush, Edward N., M.D., Sheppard and Enoch Pratt Hospital, Towson, Maryland, U.S.A.
 1887. Chapin, John B., M.D., Pennsylvania Hospital for the Insane, Philadelphia, U.S.A.
 1902. Coupland, Sidney, M.D., F.R.C.P. Lond., Commissioner in Lunacy, 16, Queen Anne Street, Cavendish Square, London, W.
 1872. { Courtenay, E. Maziere, A.B., M.B., C.M.T.C.D., M.D., Inspector of
 1891. { Lunatics in Ireland, Lunacy Office, Dublin Castle. (*Secretary for Ireland*, 1876-87.)
 1879. Echeverria, M. G., M.D.

1892. Féré, Dr. Charles, 22, Avenue Bugeaud, XVI^e Arrt., Paris.
 1895. Ferrier, David, M.D., 34, Cavendish Square, London.
 1872. Fraser, John, M.B., C.M., F.R.C.P.E., Commissioner in Lunacy, 19, Strathearn Road, Edinburgh.
 1868. } Gairdner, Sir William T., K.C.B., M.D.Edin., F.R.S., formerly Professor
 1888. } of Medicine in the University of Glasgow, Physician to H.M. the King
 in Scotland, 32, George Square, Edinburgh. (PRESIDENT, 1882.)
 1898. Hine, George T., F.R.I.B.A., 35, Parliament Street, London, S.W.
 1881. Hughes, C. H., M.D., St. Louis, Missouri, United States.
 1887. Lentz, Dr., Asile d'Aliénés, Tournai, Belgique.
 1898. MacDonald, A. E., M.D., Columbia Court, 431, Riverside Avenue, cor. 115th Street, New York, U.S.A.
 1898. Magnan, V., M.D., Asile de Ste. Anne, Paris.
 1866. } Mitchell, Sir Arthur, M.D.Aberd., LL.D., K.C.B., late Commissioner in
 1871. } Lunacy for Scotland; 34, Drummond Place, Edinburgh.
 1897. Morel, M. Jules, M.D., States Lunatic Asylum, Mons, Belgium.
 1880. Motet, M., 161, Rue de Charonne, Paris.
 1889. Needham, Frederick, M.D.St. And., M.R.C.P.Edin., M.R.C.S.Eng.,
 Commissioner in Lunacy, 19, Campden Hill Square, Kensington,
 W. (PRESIDENT, 1887.)
 1891. O'Farrell, Sir G. P., M.D., M.Ch.Univ. Dubl., Inspector of Lunatics in
 Ireland, 19, Fitzwilliam Square, Dublin.
 1881. Peeters, M., M.D., Gheel, Belgium.
 1873. Pitman, Sir Henry A., M.D.Cantab., F.R.C.P.Lond., Registrar of the
 Royal College of Physicians, Enfield, Middlesex.
 1900. Ritti, Ant., Maison Nationale de Charentou, St. Maurice, Paris. (*Corr.
 Mem.*, 1890.)
 1887. Schüle, Heinrich, M.D., Illenau, Baden, Germany.
 1881. Tamburini, A., M.D., Reggio-Emilia, Italy.
 1901. Toulouse, Dr. Edouard, Directeur du Laboratoire de Psychologie experi-
 mental à l'Ecole des Hautes Etudes Paris et Médecin en chef de
 l'Asile de Villejuif, Seine, France.
 1904. Tuke, Sir John Batty, M.D., M.P., 20, Charlotte Square, Edinburgh.

CORRESPONDING MEMBERS.

1896. Bianchi, Prof. Leonardo, Manicomio Provinciale di Napoli.
 1904. Bierão, Caetano, 48, Rua Formosa, Lisbonne, Portugal.
 1897. Buschan, Dr. G., Stettin, Germany.
 1904. Caroleü, Wilfrid, Manicomia de Sta. Crur, St. Andreo de Palamar,
 Barcelona, Spain.
 1896. Cowan, F. M., M.D., 107, Perponcher Straat, The Hague, Holland.
 1902. Estense, Benedetto Giovanni Selvatico, M.D., 116, Piazza Porta Pia, Rome.
 1904. Köenig, William Julius, Deputy Superintendent, Dalldorf Asylum, Berlin.
 1880. Kornfeld, Dr. Hermann, Gleiwitz, Silesia, Germany.
 1889. Kowalowsky, Professor Paul, Kharkoff, Russia.
 1895. Lindell, Emil Wilhelm, M.D., Sweden.
 1901. Manheimer-Gommès, Dr., 32, Rue de l'Arcade, Paris.
 1897. Näcke, Dr. P., Hubertusberg Asylum, Leipzig.
 1886. Parant, M. Victor, M.D., Toulouse.
 1890. Régis, Dr. E., 54, Rue Huguerie, Bordeaux.
 1893. Semelaigne, Dr. René, Secrétaire des Séances de la Société Médico-
 Psychologique de Paris, 16, Avenue de Madrid, Neuilly, Seine, France.

MEMBERS OF THE ASSOCIATION.

Alphabetical List of Members of the Association, with the year in which they joined. The Asterisk means Members who joined between 1841 and 1855.

1900. Abbott, Arthur J., M.D., B.Ch., B.A.O., T.C.Dublin, Hants County Asylum, Fareham.
1900. Abbott, Henry Kingsmill, M.D.Dublin, D.P.H.Ireland. Hants County Asylum, Fareham.
1891. Adair, Thomas Stewart, M.D., C.M.Edin., Storthes Hall Asylum, Kirkburton, near Huddersfield.
1868. Adams, Josiah O., M.D.Durh., F.R.C.S.Eng., Brooke House, Upper Clapton, London.
1886. Agar, S. Hollingsworth, jun., B.A.Cantab., M.R.C.S., Hurst House, Henley-in-Arden.
1901. Ahern, John M., M.B., B.Ch., L.R.C.P.&S.I., Assistant Medical Officer, 18, Walton Park, Liverpool.
1905. Alcock, Benjamin James, M.B.Aberd., Ch.B., James Murray's Royal Asylum, Perth.
1869. Aldridge, Chas., M.D.Aber., L.R.C.P., Plympton House, Plympton, Devon.
1905. Alexander, Edward Henry, M.B., M.R.C.S., Physician Superintendent, Ashbourne Hall Asylum, Dunedin, New Zealand.
1899. Alexander, Hugh de Maine, M.D., The Hospital, Royal Asylum, Aberdeen.
1890. Alexander, Robert Reid, M.D.Aber., 19, Leinster Square, Bayswater.
1905. Allen, Robert George, L.R.C.P.&S.I., Burbury Street, Lozell, Birmingham.
1882. Alliot, A. J., M.D., Rosendal, Sevenoaks.
1899. Allmann, Dorah Elizabeth, M.B., B.Ch., B.A.O.R.U.I., Assistant Medical Officer, District Asylum, Armagh.
1885. Amsden, Geo., M.B., Medical Supt., County Asylum, Brentwood, Essex.
1900. Anderson, John Sewell, M.R.C.S., L.R.C.P., Hull City Asylum, Willerby, near Hull.
1901. Anderson, William C., M.B., C.M., 15, King Street, Dundee, N.B.
1904. Archdale, Mervyn Alex., M.B., B.S.Dur., East Riding Asylum, Beverley, Yorks.
1905. Archdall, Mervyn Thomas, L.S.A.Lond., L.R.C.P.&S.Edin., Resident Licensee, Bishopstone House, Bedford.
1891. Aveline, Henry T. S., M.R.C.S., L.R.C.P., M.P.C., Medical Superintendent, County Asylum, Cotford, near Taunton, Somerset. (*Hon. Sec. for S.W. Division since 1905.*)
1903. Bailey, William Henry, M.B., M.R.C.S., L.S.A., Featherstone Hall, Southall, Midd.
1894. Baily, Percy J., M.B.Edin., Medical Superintendent, London County Asylum, Hanwell, W.
1906. Baird, Harvey, M.D., Ch.B.Edin., Assistant Medical Officer, London County Asylum, Colney Hatch.
1878. Baker, H. Morton, M.B.Edin., Assistant Medical Officer, Leicester Borough Asylum, Humberstone, Leicester.
1888. Baker, John, M.D., Deputy Superintendent, State Asylum, Broadmoor, Berks.
1876. Baker, Robert, M.D.Edin., 2, The Crescent, Blossom Street, York. (PRESIDENT, 1892.)
1904. Barham, Guy Foster, M.B., B.A., B.C., M.R.C.S., L.R.C.P., Claybury Asylum, Woodford Bridge, Essex.
1901. Barnett, Horatio, M.B., B.C.Cantab., M.R.C.S., L.R.C.P.Lond., Medical Superintendent, Stretton House, Church Stretton, Salop.
1895. Barraclough, Herbert, M.B., The Asylum, Porirua, nr. Wellington, New Zealand.
1878. Barton, James Edward, L.R.C.P.Edin., L.M., M.R.C.S., Medical Superintendent, Surrey County Lunatic Asylum, Brookwood, Woking.
1904. Barton, Samuel J., M.D.Dubl., Physician to the Norfolk and Norwich Hospital, Surrey Street, Norwich.

1901. Baskin, J. Loughheed, L.R.C.P.&S.Edin., L.F.P.S.Glas., Fisherton House, Salisbury.
1902. Baugh, Leonard D. H., M.B., C.M., Gartloch Asylum, Gartcosh, Glasgow, N.B.
1864. Bayley, Joseph, M.R.C.S., Medical Superintendent, St. Andrew's Hospital, Northampton.
1893. Bayley, Joseph Herbert, M.B., C.M.Edin., Assistant Medical Officer, St. Andrew's Hospital, Northampton.
1874. Beach, Fletcher, M.B., F.R.C.P.Lond., formerly Medical Superintendent, Darenth Asylum, Dartford; Winchester House, Kingston Hill, Surrey, and 79, Wimpole Street, W. (*General Secretary*, 1889—1896. *PRESIDENT*, 1900.)
1892. Beadles, Cecil F., M.R.C.S., L.R.C.P., The Clergy House, Englefield Green, Surrey.
1902. Beale-Browne, Thomas Richard, M.R.C.S.Eng., L.R.C.P.Lond., Berrywood, Northampton.
1896. Beamish, George, L.R.C.S.I., L.R.C.P.E., L.M., Medical Officer's House, H.M. Prison, Wandsworth, London, S.W.
1899. Beresford, Edwyn H., M.R.C.S. & M.R.C.P.Lond., Medical Superintendent, Tooting Bec Asylum, Tooting, S.W.
1894. Bernard, Walter, M.D., F.R.C.P.I., M.R.C.S.Eng., 14, Queen Street, Londonderry.
1894. Blachford, James Vincent, M.D., B.S.Durham, Medical Superintendent, Bristol Asylum, Fishponds, near Bristol.
1898. Blair, David, M.A., M.D., C.M., County Asylum, Lancaster.
1888. Blair, Robert, M.D., Braefort, Crookston, Paisley.
1904. Blakesley, Henry John, F.R.C.S.Eng., L.R.C.P.Edin., 56, London Road, Leicester.
1857. Blandford, George Fielding, M.D.Oxon., F.R.C.P.Lond., 48, Wimpole Street, W. (*PRESIDENT*, 1877.)
1897. Blandford, Joseph John Guthrie, B.A., D.P.H.Camb., M.R.C.S.Eng., L.R.C.P.Lond., Senior Assistant Medical Officer, County Asylum, Whittingham, Preston, Lancs.
1904. Bodvel-Roberts, Hugh Frank, M.A.Cantab., M.R.C.S., L.R.C.P., Middlesex County Asylum, Napsbury, near St. Albans, Herts.
1900. Bolton, Joseph Shaw, M.D., B.S., B.Sc.Lond., Senior Assistant Medical Officer, County Asylum, Rainhill, Liverpool.
1892. Bond, Charles Hubert, D.Sc., M.D., Ch.M.Edin., Medical Superintendent, The Colony, Ewell, Surrey. (*Hon. General Secretary*.)
1877. Bower, David, M.D.Aber., Springfield House, Bedford.
1877. Bowes, John Ireland, M.R.C.S.Eng., L.S.A., Medical Superintendent, County Asylum, Devizes, Wilts.
1893. Bowes, William Henry, M.D.Lond., Assistant Medical Officer, Plymouth Borough Asylum, Ivybridge, Devon.
1900. Bowles, Alfred, M.R.C.S., L.R.C.P., 10, South Cliff, Eastbourne.
1896. Boycott, Arthur N., M.D.Lond., M.R.C.S.Eng., L.R.C.P.Lond., Medical Superintendent, Herts County Asylum, Hill End, St. Albans, Herts. (*Hon. Sec. for S.-E. Division*, 1900-05.)
1898. Boyle, A. Helen A., M.D., 3, Palmeira Terrace, Hove, Brighton.
1883. Boys, A. H., L.R.C.P.Edin., Chequer Lawn, St. Albans.
1891. Braine-Hartnell, George, M. P., L.R.C.P.Lond., M.R.C.S.Eng., Medical Superintendent, County and City Asylum, Powick, Worcester.
1893. Bramwell, John Milne, M.B., C.M.Edin., 33, Wimpole Street, W.
1904. Branthwaite, Robert Welsh, M.D. (*Inspector under the Inebriates Act*), Home Office Chambers, 55, Whitehall, S.W.
1881. Brayn, R., L.R.C.P.Lond., Medical Superintendent, Broadmoor Asylum, Crowthorne, Berks.
1895. Briscoe, John Frederick, M.R.C.S.Eng., Resident Medical Superintendent, Westbrooke House Asylum, Alton, Hauts.

1892. Bristowe, Hubert Carpenter, M.D.Lond., Wrington, R.S.O., Somerset.
 1905. Brown, Harry Egerton, M.D., M.P.C., The Asylum, Pretoria, S. Africa.
 1904. Brown, Josephine, M.B.Lond., St. Michel Cottages, Glencoe Road, Bushey, Herts.
 1898. Bruce, Lewis C., M.D.Edin., Druid Park, Murthly, N.B. (*Hon. Divisional Secretary for Scotland since 1901.*)
 * Brushfield, Thomas N., M.D.St. And., The Cliff, Budleigh Salterton, Devon.
 1896. Bubb, William, M.R.C.S., L.R.C.P.Lond., Senior Assistant Medical Officer, Worcester County Asylum, Powick, near Worcester.
 1892. Bullen, Frederick St. John, M.R.C.S.Eng., 12, Pembroke Road, Clifton, Bristol.
 1904. Burrell, Arthur Ambrose, M.B., B.Ch., St. Edmundsbury, Lucan, Co. Dublin.
1891. Caldecott, Charles, M.B., B.S.Lond., M.R.C.S., Medical Superintendent, Earlswood Asylum, Redhill, Surrey.
 1889. Callcott, James T., M.D., Medical Superintendent, Borough Asylum, Newcastle-on-Tyne.
 1874. Cameron, John, M.D.Edin., Medical Superintendent, Argyll and Bute Asylum, Lochgilphead.
 1902. Camparole, Paul Clem, M.B., C.M.Ed., Junior Assistant Medical Officer, County Asylum, Melton, Suffolk.
 1894. Campbell, Alfred Walter, M.D.Edin., Macquarie Chambers, 183, Macquarie Street, Sydney, New South Wales.
 1880. Campbell, Patrick E., M.B., C.M., Medical Superintendent, District Asylum, Caterham.
 1897. Campbell, Robert Brown, M.B., C.M.Edin., Medical Superintendent, Inverness District Asylum, Inverness.
 1897. Cappe, Herbert Nelson, M.R.C.S.Eng., L.R.C.P.Lond., Assistant Medical Officer, Surrey County Asylum, Brookwood.
 1905. Carre, Henry, L.R.C.P., L.M., Woodilee Asylum, Lenzie, Glasgow.
 1891. Carswell, John, L.R.C.P.Edin., L.F.P.S.Glasg., Certifying Medical Officer, Barony Parish, 5, Royal Crescent, Glasgow.
 1896. Cashman, James P., M.B., B.Ch., B.A.O.Royal Univ. Irel., Assistant Medical Officer, Cork District Asylum.
 1902. Cassells, Alexander Henderson, M.B., Ch.B.Glasg., 5, Albert Road, Gourrock, N.B.
 1874. Cassidy, D. M., M.D., C.M.McGill Coll., Montreal, D.Sc. (Public Health) Edin., F.R.C.S.Edin., Medical Superintendent, County Asylum, Lancaster.
 1888. Chambers, James, M.D., The Priory, Roehampton. (*Co-Editor of Journal since 1905, Assistant Editor 1900-05.*)
 1865. Chapman, Thomas Algernon, M.D.Glas., L.R.C.S.Edin., Betula, Reigate.
 1880. Christie, J. W. Stirling, L.R.C.P.Edin., Medical Superintendent, County Asylum, Stafford.
 1878. Clapham, Wm. Crochley S., M.D., F.R.C.P.Ed., The Five Gables, Mayfield, Sussex. (*Hon. Sec. N. and M. Division, 1897-1901.*)
 1906. Claque, Henry John, L.R.C.S., L.R.C.P.Edin., Assistant Medical Officer, Glamorgan County Asylum, Bridgend.
 1879. Clarke, Henry, M.D.Durh., L.R.C.P.Lond., H.M. Prison, Wakefield.
 1901. Cleland, William Lennox, M.B., B.Ch.Edin., Park Side, Adelaide, South Australia.
 1862. Clouston, T. S., M.D.Edin., F.R.C.P.Edin., F.R.S.E., Physician Superintendent, Royal Asylum, Morningside, Edinburgh. (*Editor of Journal, 1873-1881.*) (PRESIDENT, 1888.)
 1900. Coffey, Patrick, L.R.C.P.&S.I., District Asylum, Maryborough, Queen's Co., Ireland.
 1892. Cole, Robert Henry, M.D.Lond., M.R.C.P.Lond., Moorcroft, Hillingdon, Uxbridge.

1900. Cole, Sydney John, M.A., M.D., B.Ch.Oxon., Senior Assistant Medical Officer, Wilts County Asylum, Devizes.
1906. Collen, Edward Victor, M.D., B.Ch., B.A.O.Dubl., Junior Medical Officer, North Riding Asylum, Clifton, York.
1908. Collins, Michael Abdy, M.B., B.S., M.R.C.S. & P.Lond., London County Asylum, Bexley, Kent.
1888. Cones, John A., M.R.C.S., 2, Portland Place, Kemp Town, Brighton.
1895. Conry, John, M.D.Aber., Fort Beaufort Asylum, South Africa.
1878. Cooke, Edward Marriott, M.D., M.R.C.S.Eng., Commissioner in Lunacy, 69, Onslow Square, S.W.
1899. Cooke, J. A., M.R.C.S., L.R.C.P., Medical Officer and Co-Licencee, Tue Brook Villa, near Liverpool.
1905. Cooper, K. D., 482-4, Falkland Road, Tardeo, Bombay, India.
1903. Cormac, Harry Dove, M.B., B.S.Madras, Parkside Asylum, Macclesfield.
1891. Corner, Harry, M.D.Lond., M.R.C.S., L.R.C.P., M.P.C., 37, Harley Street, W.
1905. Cotter, James, L.R.C.P.&S.E., L.F.P.S.Glas., Down District Asylum, Downpatrick.
1897. Cotton, William, M.A., M.D.Edin., D.P.H.Cantab., 231, Gloucester Road, Bishopston, Bristol.
1893. Cowen, Thomas Philip, M.D., B.S.Lond., Assistant Medical Officer, County Asylum, Lancaster.
1884. Cox, L. F., M.R.C.S., Medical Superintendent, County Asylum, Denbigh.
1893. Craig, Maurice, M.A., M.D., B.C.Cantab., M.R.C.P.Lond., Senior Assistant Medical Officer, Bethlem Royal Hospital, Southwark.
1904. Crawford, William Thomson, M.B.Lond., M.R.C.S., L.R.C.P., East Sussex Asylum, Hellingly, Sussex.
1906. Creighton, John Alexander, M.B., C.M., West Riding Asylum, Wakefield.
1897. Cribb, Harry Gifford, M.R.C.S.Eng., L.R.C.P.Lond., Senior Assistant Medical Officer, London County Asylum, Cane Hill, Coulsdon, Surrey.
1898. Crookshank, F. G., M.D.Lond., M.R.C.S., L.R.C.P., 27, The Terrace, Barnes, S.W.
1904. Cross, Harold Robert, L.S.A., Storthes Hall Asylum, Kirkburton, near Huddersfield.
1894. Cullinan, Henry M., L.R.C.P.I., L.R.C.S.I., Senior Assistant Medical Officer, Richmond District Asylum, Dublin.
1904. Cullum, Sydney John, M.B., B.Ch.Dubl., Crichton Royal Institution, Dumfries.
1905. Cummins, Edmund Joseph, L.R.C.P.&S.Edin., Richmond Place, Clonmel, Ireland.
1905. Darbyshire, Harold Stewart C., M.R.C.S.Eng., L.R.C.P.Lond., Grosvenor House, West Ealing, W.
1899. Daunt, Elliot, M.R.C.S., L.R.C.P., D.P.H., The Glen, Bursledon, Hampshire.
1896. Davidson, Andrew, M.D., C.M.Aber., Callan Park, Sydney, N.S.W.
1891. Davis, Arthur N., L.R.C.P., L.R.C.S.Edin., Medical Superintendent, County Asylum, Exminster, Devon.
1894. Dawson, William R., M.D., B.Ch.Dubl., F.R.C.P.I., Medical Superintendent, Farnham House Asylum, Finglas, Dublin. (*Hon. Divisional Sec. for Ireland since 1902.*)
1869. Deas, Peter Maury, M.B. and M.S.Lond., Medical Superintendent, Wonford House, Exeter.
1900. Despard, Rosina C., M.D.Lond., The Dell, Colden Common, Winchester.
1888. De Lisle, Samuel Ernest, L.R.C.P., L.R.C.S.I., Three Counties Asylum, Stotfold, Herts.

1901. De Steiger, Adèle, M.B.Lond., County Asylum, Brentwood, Essex.
1905. Devine, Henry, M.B., B.S., M.R.C.P.Lond., M.R.C.S., London County Asylum, Cane Hill, Coulsdon, Surrey.
1904. Devon, James, L.R.C.P. & S.Edin., 6, Cathedral Square, Glasgow.
1876. Dickson, F. K., F.R.C.P.Edin., Wye House Lunatic Asylum, Buxton, Derbyshire.
1903. Dickson, Thomas Graeme, L.R.C.P. & S.Edin., Assistant Superintendent, Wye House, Buxton.
1905. Dixon, J. Francis, M.D., B.Ch., B.A.O., B.A.Dubl., Three Counties Asylum, Arlesley, Hitchin.
1879. Dodds, William J., M.D., D.Sc.Edin., Valkenburg, Mowbray, near Cape Town, South Africa.
1886. Donaldson, Robert Lockhart, B.A., M.D., B.Ch.Univ. of Dubl., M.P.C., Senior Medical Officer, District Asylum, Monaghan.
1889. Donaldson, William Ireland, B.A., M.D., B.Ch.Univ. of Dubl., Medical Superintendent, County of London Manor Asylum, Epsom, Surrey.
1892. Donelan, John O'Connor, L.R.C.P.I., L.R.C.S.I., M.P.C., Deputy Superintendent, Portrane Asylum, Donabate, co. Dublin.
1899. Donelan, Thomas O'Connor, L.R.C.P. & L.R.C.S.I., Middlesex County Asylum, Napsbury, near St. Albans, Herts.
1890. Douglas, William, M.D. Queen's Univ. Irel., M.R.C.S.Eng., Brandfold, Goudhurst.
1905. Dove, Augustus Charles, M.D.Durh., M.B., B.S., "Brightside," Crouch End Hill, N.
1897. Dove, Emily Louisa, M.B.Lond., The School, Durham.
1903. Dow, William Alex., M.D.Durh., M.R.C.S.&P.Lond., H.M. Prison, Lewes.
1905. Drake-Brockman, Henry George, M.R.C.S., L.R.C.P., Middlesborough Asylum, Cleveland, Yorks.
1884. Drapes, Thomas, M.B., Medical Superintendent, District Asylum, Ennis-corthy, Ireland.
1905. Drew, Charles Milligan, M.A., M.B., Ch.B.Glas., Lt. R.A.M.C.
1902. Dudgeon, Herbert Wm., M.D.Durh., M.R.C.S.Eng., L.R.C.P.Lond., Medical Officer to the Egyptian Asylum, Abassieh, Cairo, Egypt.
1899. Dudley, Francis, L.R.C.P.&S.I., Senior Assistant Medical Officer, County Asylum, Bodmin, Cornwall.
1905. Dunlop, James Craufurd, M.D.Edin., L.R.C.P.Edin., M.R.C.S.E., Superintendent of Statistical Department, H.M. General Registry of Births, Marriages, and Deaths, Scotland, 33, Chester Street, Edinburgh.
1903. Dunston, John Thomas, M.D., B.S.Lond., Senior Assistant Medical Officer, The Asylum, Pretoria.
1899. Eades, Albert I., L.R.C.P. & S.I., North Riding Asylum, Clifton, Yorks.
1903. Eady, George John, M.D., M.R.C.P.Edin., M.R.C.S.Eng., 78, Drayton Gardens, S. Kensington, S.W.
1874. Eager, Reginald, M.D.Lond., M.R.C.S.Eng., Northwoods, near Bristol.
1906. Eager, Richard, M.B., Ch.B.Aber., Assistant Medical Officer, Devon County Asylum, Exminster.
1873. Eager, Wilson, L.R.C.P.Lond., M.R.C.S.Eng., Northwoods, Winterbourne, Bristol.
1881. Earle, Leslie, M.D.Edin., 108, Gloucester Terrace, Hyde Park, W.
1891. Earls, James Henry, M.D., M.Ch., Moylton, Fairlawn Park, Chiswick, S.W.
1903. East, Guy Rowland, M.B.Durh., 66, St. George's Square, Newcastle-on-Tyne.
1895. Easterbrook, Charles C., M.A., M.D., F.R.C.P.Ed., Medical Superintendent, Ayr District Asylum, Glengail, Ayr, N.B.

1904. Eddison, John Edwin, M.D.Ed., 6, Park Square, Leeds.
1895. Edgerley, Samuel, M.D., M.A., C.M.Edin., Assistant Medical Officer, West Riding Asylum, Menston, nr. Leeds.
1900. Edridge-Green, Frederic W., M.D., F.R.C.S., Hendon Grove, Hendon.
1897. Edwards, Francis Henry, M.D.Bru., M.R.C.P.Lond., Medical Superintendent, Camberwell House, S.E.
1901. Elgee, Samuel Charles, L.R.C.P., L.R.C.S.I., London County Asylum, Horton, Epsom, Surrey.
1889. Elkins, Frank Ashby, M.D., Medical Superintendent, Metropolitan Asylum, Leavesden.
1898. Ellerton, Henry B., M.R.C.S., L.R.C.P., Leavesden Asylum, King's Langley R.S.O., Herts.
1873. Elliot, G. Stanley, M.R.C.P.Edin., F.R.C.S.Edin., 31, Belvedere Road, Upper Norwood, S.E.
1890. Ellis, William Gilmore, M.D.Bru., Superintendent, Government Asylum, Singapore.
1899. Ellison, F. C., M.D., B.Ch., T.C.D., Assistant Medical Officer, District Asylum, Castlebar.
1901. Erskine, Wm. J. A., M.D., C.M., Senior Assistant Medical Officer, City Asylum, Nottingham.
1895. Eurich, Frederick Wilhelm, M.D., C.M.Edin., 7, Liudum Terrace, Manningham, Bradford, Yorks.
1894. Eustace, Henry Marcus, M.D., B.Ch., B.A.T.C.D. Assistant Physician, Hampstead and Highfield Private Asylum, Glasnevin, Dublin.
1901. Evans, James Wm., M.R.C.S., L.S.A., Lieut.-Col. Indian Medical Service (retired), East India United Service Club, 16, St. James's Square, S.W., and Martinstown, Dorchester.
1897. Everett, William, M.D., Assistant Medical Officer, County Asylum, Chart-ham Downs, Kent.
1891. Ewan, John Alfred, M.A., M.D., Medical Superintendent, Kesteven County Asylum, Sleaford, Lincs.
1884. Ewart, C. T., M.D., C.M.Aberd., Senior Assistant Medical Officer, Claybury Asylum, Woodford Bridge, Essex.
1906. Ewens, George Francis William, Major I.M.S. Bengal, c/o Messrs. Grindlay & Co., 54, Parliament Street, S.W.
1894. Farquharson, William F., M.D.Edin., Medical Superintendent, Counties Asylum, Garlands, Carlisle.
1901. Fee, Wm. George, L.R.C.P. and L.R.C.S.Edin., Gray's Inn, London, W.C.
1903. Fennell, Charles Henry, M.A., M.D.Oxon, M.R.C.P.Lond., Senior Assistant Medical Officer, East Sussex Asylum, Hellingly, Sussex.
1905. Ferris, William, M.D., B.S.Lond., Middlesex County Asylum, Tooting, S.W.
1897. Fielding, James, M.D., Victoria Univ., Canada, M.R.C.S.Eng., L.R.C.P. Edin., Medical Superintendent, Bethel Hospital, Norwich.
1906. Fielding, Saville James, M.B., B.S.Durh., Bethel Street, Norwich.
1873. Finch, John E. M., M.D., Medical Superintendent, Borough Asylum, Leicester.
1889. Finch, Richard T., B.A., M.B.Cantab., Orchard Stede, Asterberry Road, Wimbledon.
1882. Finegan, A. D. O'Connell, L.R.C.P.I., Medical Superintendent, District Asylum, Mullingar, Ireland. (*Hon. Divisional Sec. for Ireland, 1898-1902.*)
1889. Finlay, David, M.D.Glasg., County Asylum, Bridgend, Glamorgan.
1906. Firth, Arthur Marcus, M.A., M.B., B.Ch.Edin., Wadsley Asylum, near Sheffield.
1903. Fitzgerald, Alexis, L.R.C.P. & S.I., L.M., District Asylum, Waterford.
1894. Fitzgerald, Charles E., M.D., F.R.C.S.I., Surgeon-Oculist to the King in Ireland, 27, Upper Merrion Street, Dublin.

1888. Fitz-Gerald, Gerald C., M.D., B.C.Cantab., M.P.C., Medical Superintendent, Kent County Asylum, Chartham, nr. Canterbury.
1899. Fitzgerald, James J., M.D., B.Ch., B.A.O.R.U.I., Assistant Medical Officer, Cork District Asylum, Carlow.
1901. Fitzgerald, John J., M.D.Brux., L.R.C.P.&S.Edin., Assistant Medical Officer, District Asylum, Cork.
1904. Fleming, Wilfrid Louis Remi, M.R.C.S., L.R.C.P., Suffolk House, Pirbright, Surrey.
1899. Flemming, Arthur L., M.R.C.S.Eng., L.R.C.P.Lond., 34, Alma Road, Clifton, Bristol.
1894. Fleury, Eleonora Lillian, M.D., B.Ch., R.U.I., Assistant Medical Officer, Richmond Asylum, Dublin.
1902. Forde, Michael J., M.D., M.Ch., R.U.I., Assistant Medical Officer, Richmond Asylum, Donabate, Dublin.
1902. Forster, Hermann Julius, L.R.C.P.I., L.S.A., Assistant Medical Officer, Sussex County Asylum, Hayward's Heath.
1906. Forster, R. A., M.B., Ch.B.Aber., Assistant Physician, Royal Asylum, Aberdeen.
1906. Forsyth, James, M.B., C.M., Glasgow District Asylum, Woodilee, Lenzic, N.B.
1906. Fortune, John, M.B., Ch.B.Edin., Senior Assistant Medical Officer, Devon County Asylum, Exminster.
1861. Fox, Charles H., M.D.St. And., M.R.C.S.Eng., 35, Heriot Row, Edinburgh.
1896. France, Eric, M.B., B.S.Durh., No. 7, First Floor, 6, Church Square, Cape Town, South Africa.
1881. Fraser, Donald, M.D., 3, Orr Square, Paisley.
1906. Fraser, Thomas Peppé, M.B., Ch.B.Aberd., Sunderland Borough Asylum, Ryhope, Sunderland.
1901. French, Louis Alexander, M.R.C.S., L.R.C.P., H.M. Prison, Wakefield, Yorks.
1902. Fuller, Lawrence Otway, M.R.C.S.Eng., L.R.C.P.Lond., The Infirmary, Lewisham, S.E.
1906. Gane, Edward Palmer Steward, M.R.C.S.Eng., L.R.C.P.Lond., Fife and Kinross Asylum, Cupar, Fife.
1904. Garden, W. Sim, M.B., Brankaenthan, Portsoy, N.B.
1893. Garth, Henry C., M.B., C.M.Edin., 36, Chowringee, Calcutta, India.
1890. Gaudin, Francis Neel, M.R.C.S., L.S.A., M.P.C., Medical Superintendent, The Grove, St. Lawrence, Jersey.
1906. Gavin, Noel John Hay, M.B., Ch.B.Edin., Norfolk County Asylum, Thorpe, Norfolk.
1885. Gayton, Francis C., M.D., Brookwood Asylum, Woking, Surrey.
1896. Geddes, John W., M.B., C.M.Edin., Medical Superintendent, County Borough Asylum, Berwick Lodge, Middlesbrough, Yorks.
1892. Gemmel, James Francis, M.B.Glasg., Medical Superintendent, County Asylum, Whittingham, Preston.
1904. Gibb, James Alex., M.B., Ch.B., Valkenburg Asylum, near Cape Town, South Africa.
1899. Gilfillan, Samuel James, M.A., M.B.Edin., Senior Assistant Medical Officer, London County Asylum, Colney Hatch.
1889. Gill, Stanley, B.A., M.D., M.R.C.P.Lond., Shaftesbury House, Formby, Lancashire.
1904. Gillespie, Daniel, M.B. (R.U.I.), Wadsley Asylum, near Sheffield.
1897. Gilmour, John Rutherford, M.B., F.R.C.P.Edin., Medical Superintendent, West Riding Asylum, Scalebor Park, Burley-in-Wharfedale, Yorks.
1906. Gilmour, Richard Withers, M.B., B.S.Durh., M.R.C.S., L.R.C.P.Lond., Assistant Medical Officer, St. Luke's Hospital, E.C.

1878. Glendinning, James, M.D.Glasg., L.R.C.S.Edin., L.M., Medical Superintendent, Joint Counties Asylum, Abergavenny.
1898. Goldie-Scot, Thomas G., M.B., C.M.Edin., M.R.C.S., L.R.C.P., Junior Assistant Physician, Royal Asylum, Gartnavel, Glasgow.
1897. Good, Thomas Saxty, M.R.C.S.Eng., L.R.C.P.Lond., Assistant Medical Officer, County Asylum, Littlemore, Oxford.
1889. Goodall, Edwin, M.D., B.S.Lond., F.R.C.P., Medical Superintendent, City Asylum, Cardiff.
1899. Gordon, James Leslie, M.B., Ch.B., Tooting Bec Asylum, Tooting, London, S.W.
- * Gordon, William S., M.A., M.B., T.C.D., District Asylum, Mullingar.
1905. Gordon-Munn, John Gordon, M.D., F.R.S.E., Heigham Hall, Norwich.
1901. Gostwyck, C. H. G., M.B., Ch.B., Stirling District Asylum, Larbert.
1899. Graham, Robert A. L., B.A., M.B., B.Ch., R.U.I., Assistant Medical Officer, District Asylum, Belfast.
1894. Graham, Samuel, L.R.C.P.Lond., Assistant Medical Officer, District Asylum, Antrim.
1888. Graham, Thomas, M.D.Glasg., 3, Garthland Place, Paisley.
1887. Graham, William, M.D., R.U.I., Medical Superintendent, District Lunatic Asylum, Belfast.
1886. Greenlees, T. Duncan, M.D., Medical Superintendent to the Grahams-town Asylum, Cape of Good Hope.
1904. Griffin, Ernest Harrison, B.A.Cantab., L.S.A.Lond., Camberwell House, Peckham Road, S.E.
1901. Grills, Galbraith Hamilton, M.D., B.Ch., Assistant Medical Officer, County Asylum, Chester.
1900. Grove, Ernest George, M.R.C.S., L.R.C.P., Bootham Park, York.
1894. Gwynn, Charles Henry, M.D.Edin., co-Licentee, St. Mary's House, Whitchurch, Salop.
1905. Hallett, H. G., M.R.C.S., L.R.C.P.Lond., Darenth Asylum, Dartford, Kent.
1894. Halstead, Harold Cecil, M.D.Durh., Assistant Medical Officer, Peckham House, Peckham.
1903. Hanbury, Langton Fuller, M.R.C.S.Eng., L.R.C.P.Lond., West Ham Borough Asylum, Ilford, Essex.
1902. Hanbury, Saville Waldron, M.R.C.S.Eng., L.R.C.P.Lond., Assistant Medical Officer, London County Asylum, Banstead, Surrey.
1896. Hanbury, William Reader, M.R.C.S., L.R.C.P., Senior Assistant Medical Officer, West Ham Borough Asylum, Goodmayes, Ilford.
1903. Hankin, Chella Mary, M.B.Durh., Borough Asylum, Portsmouth.
1901. Harding, William, M.D., M.R.C.P.Lond., Medical Superintendent, Northampton County Asylum, Berry Wood, Northampton.
1906. Harman, George James, L.R.C.P.&S.Edin., L.F.P.S.Glasg., Assistant Medical Officer, Cornwall County Asylum, Bodmin.
1899. Harmer, W. A., L.S.A., Resident Superintendent and Licentee, Redlands Private Asylum, Tonbridge, Kent.
1904. Harper-Smith, George Hastie, M.R.C.S., L.R.C.P., B.A.Cantab., 102, Huntingdon Road, Cambridge.
1897. Harris, William, M.D.St. And., F.R.C.S.Edin., M.R.C.P.Edin., c/o Dr. W. T. Harris, 1, The Bourne, Bolton Gardens, High Street, Chiswick.
1898. Harris-Liston, L., M.D., M.R.C.S., L.R.C.P.Lond., L.S.A., Middleton Hall, Middleton St. George, Co. Durham.
1905. Hart, Bernard, M.B.Lond., M.R.C.S.Eng., Herts County Asylum, Hill End, St. Albans, Herts.
1886. Harvey, Bagenal Crosbie, L.R.C.P., L.R.C.S., Assistant Medical Officer, District Asylum, Clonmel.

1892. Haslett, William John, M.R.C.S., L.R.C.P., Resident Medical Superintendent, Halliford House, Sunbury-on-Thames.
1891. Havelock, John G., M.D., C.M. Edin., Physician Superintendent, Montrose Royal Asylum.
1890. Hay, Frank, M.B., C.M., Physician Superintendent, Ashburn Hall Asylum, Dunedin, New Zealand.
1900. Haynes, Horace E., M.R.C.S., L.S.A., 32, Brunswick Terrace, Hove, Sussex.
1895. Header, Frederic P., M.D., C.M., Medical Superintendent, Yorkshire Inebriate Reformatory, Cattal, Whixley, near York.
1905. Hector, George W. K., M.D., L.R.C.P.&S.
1903. Heffernan, Patrick, M.B., B.Ch., B.A.O., R.U.I., Rathkenny, Fethard, co. Tipperary.
1905. Henderson, George, M.A., M.B., Medical Superintendent, Fisherton House, Salisbury.
1885. Henley, Edward W., M.R.C.S., L.R.C.P., Medical Superintendent, County Asylum, Barnwood, Gloucester.
1906. Herbert, Thomas, M.R.C.S. Eng., L.R.C.P., York City Asylum, Fulford, York.
1899. Herbert, William W., M.D., C.M. Edin., North Wales Counties Asylum, Denbigh, North Wales.
1877. Hetherington, Charles E., M.B., Medical Superintendent, District Asylum, Londonderry, Ireland.
1903. Hewitt, David Walker, M.B., B.Ch., R.U.I., Surgeon R.N.
1877. Hewson, R. W., L.R.C.P. Edin., Medical Superintendent, Coton Hill, Stafford.
1902. Higginson, John Wigmore, M.R.C.S., L.R.C.P., Resident Medical Officer, Hayes Park Asylum, Hayes Park, Middlesex.
1882. Hill, H. Gardiner, M.R.C.S., Medical Superintendent, Middlesex County Asylum, Tooting.
1905. Hines, Arthur, M.B., County Asylum, Stafford.
1871. Hingston, J. Tregelles, M.R.C.S. Eng., Redcote, St. Mark's Road, Leamington.
1881. Hitchcock, Charles Knight, M.D., Bootham Park, York.
1900. Holländer, Bernard, M.D., M.R.C.S., L.R.C.P., 35A, Welbeck Street, London, W.
1903. Hopkins, Charles Leighton, M.B., B.C. Cantab., York City Asylum, Fulford, York.
1894. Hotchkiss, Robert D., M.A., M.D., Renfrew Asylum, Dykebar, N.B.
1900. Hughes, George Osborne, M.D. Virginia, M.R.C.S., L.R.C.P., Commonwealth Block, Market and Main Streets, Winnipeg, Canada.
1900. Hughes, Percy T., M.B., Ch.M. Edin., D.P.H. Lond., Medical Superintendent, Worcestershire County Asylum, Barnsley Hall, Bromsgrove.
1904. Hughes, William Stanley, M.R.C.S., L.R.C.P., Park View, Aberayron, Cardiganshire.
1857. Humphry, John, M.R.C.S. Eng., Medical Superintendent, County Asylum, Stone, near Aylesbury, Bucks.
1897. Hunter, David, M.A., M.B., B.C. Cantab., Medical Superintendent, West Ham Borough Asylum, Goodmayes, Ilford, Essex.
1904. Hunter, Percy Douglas, M.R.C.S., L.R.C.P. Lond., 2, Chartfield Avenue, Putney.
1905. Hutchinson, Joseph Armstrong, M.D., M.S. Durh., Northallerton, Yorkshire.
1906. Huxley, Charles Rodney, L.R.C.P.&S. Edin., L.F.P.S. Glas., Kent House Road, New Beckenham, Kent.
1882. Hyslop, James, D.S.O., M.D., Natal Government Asylum, Pietermaritzburg.

1888. Hyslop, Theo. B., M.D., C.M.Edin., M.R.C.P.E., M.P.C., Bethlem Royal Hospital, S.E.
1871. Ireland, William W., M.D.Edin., 1, Victoria Terrace, Musselburgh, N.B.
1906. Irwin, Peter Joseph, L.R.C.P.&S.I., L.M., District Asylum, Limerick.
1905. Jackson, Arthur Molyneux, M.D.Oxon., Medical Superintendent, Notts County Asylum, Radcliffe-on-Trent.
1866. Jackson, J. Hughlings, M.D.St. And., F.R.C.P.Lond., F.R.S., Physician to the Hospital for Epilepsy and Paralysis, &c., 3, Manchester Square, London, W.
1904. Jeremy, Harold Rowe, M.R.C.S.Eng., L.R.C.P.Lond., 60, Friern Road, East Dulwich, S.E.
1905. Johnson, Smeeton, M.B.Lond., L.R.C.P., M.R.C.S., Rainhill Asylum, near Liverpool.
1893. Johnston, Gerald Herbert, L.R.C.S. and L.R.C.P.Edin., Brooke House, Upper Clapton, N.
1905. Johnston, Thomas Leonard, L.R.C.P.&S.Edin., L.F.P.S.Glas., Bracebridge Asylum, Lincoln.
1905. Johnstone, George A., M.B., Ch.B.Aberd., 46, Charlotte Street, South Shields.
1878. Johnstone, J. Carlyle, M.D., C.M., Medical Superintendent, Roxburgh District Asylum, Melrose.
1903. Johnstone, Thomas, M.D.Edin., M.R.C.P.Lond., 32, Park Square, Leeds.
1880. Jones, D. Johnson, M.D.Edin., Medical Superintendent, Banstead Asylum, Surrey.
1866. Jones, Evan, M.R.C.S.Eng., Ty-mawr, Aberdare, Glamorganshire.
1882. Jones, Robert, M.D.Lond., B.S., F.R.C.S., Medical Superintendent, London County Asylum, Claybury, Woodford, Essex. (*Gen. Secretary from 1897 to 1906. PRESIDENT 1906-7.*)
1897. Jones, Samuel Lloyd, M.R.C.S.Eng., L.R.C.P.Lond., Assistant Medical Officer, London County Asylum, Colney Hatch, N.
1898. Jones, W. Ernest, M.R.C.S.Eng., L.R.C.P.Lond., The Old Treasury Buildings, Spring Street, Melbourne.
1879. Kay, Walter S., M.D., Medical Superintendent, South Yorkshire Asylum, Wadsley, near Sheffield.
1886. Keay, John, M.D., Bangour Village, Uphall, Linlithgowshire.
1899. Keegan, Lawrence Edward, M.D., Medical Superintendent, Lunatic Asylum, St. John's, Newfoundland.
1902. Kelley-Patterson, Wm., M.D., M.Ch., R.U.I., Tod Pedu, South Godstone, Surrey.
1898. Kemp, Norah, M.B., C.M.Glas., The Retreat, York.
1899. Kennedy, Hugh T. J., L.R.C.P.&S.I., L.M., Assistant Medical Officer, District Asylum, Enniscorthy, Wexford.
1902. Kennedy, Patrick Gabriel, L.R.C.P.&S.Edin., L.F.P.S.Glas., Assistant Medical Officer, London County Asylum, Banstead, Surrey.
1897. Kerr, Hugh, M.A., M.D.Glasg., Assistant Medical Officer, Bucks County Asylum, Stone, Aylesbury, Bucks.
1902. Kerr, Neil Thomson, M.B., C.M.Ed., Medical Superintendent, Lanark District Asylum, Hartwood, Shotts, N.B.
1893. Kershaw, Herbert Warren, M.R.C.S.Eng., L.R.C.P.Lond., Dinsdale Park, near Darlington.
1897. Kidd, Harold Andrew, M.R.C.S.Eng., L.R.C.P.Lond., Medical Superintendent, West Sussex Asylum, Chichester.
1903. King, Frank Raymond, B.A.Cantab., M.R.C.S.Eng., L.R.C.P.Lond., Medical Superintendent, Northumberland House, Finsbury Park, N.
1897. Kingdon, Wilfred Robert, M.B., B.S.Durh., 160, Goldhawk Road, W.
1905. Kingsbury, William Neave, M.R.C.S., L.R.C.P., Middlesex County Asylum, Tooting, S.W.

1903. Kingsford, Arthur Beresford, M.R.C.S., L.R.C.P.Lond., D.P.H.Camb., 19, Upper George Street, Bryanston Square, W.
1902. King-Turner, A. C., M.B., C.M.Edin., The Retreat, Fairford, Gloucestershire.
1899. Kirwan, James St. L., B.A., M.B., B.Ch., B.A.O.Roy. Univ. Irel., Medical Superintendent, District Asylum, Ballinasloe, Ireland.
1903. Kough, Edward Fitzadam, M.B., B.Ch., County Asylum, Gloucester.
1898. Labey, Julius, M.R.C.S., Medical Superintendent, Public Asylum, Jersey.
1902. Langdon-Down, Percival L., M.A., M.B., B.C.Cantab., Dixland, Hampton Wick, Middlesex.
1896. Langdon-Down, Reginald L., M.A., M.B., B.C.Cantab., M.R.C.P.Lond., Normansfield, Hampton Wick.
1902. Laval, Evariste, M.B., C.M.Edin., The Warneford Asylum, Oxford.
1898. Lavers, Norman, M.D., M.R.C.S., Medical Superintendent, The Asylum, Canterbury.
1899. Law, Charles D., L.R.C.P.&S.Edin., L.F.P.G.S., c/o Manager, Bank of Victoria, 10, King William Street, E.C.
1892. Lawless, George Robert, F.R.C.S.I., Medical Superintendent, District Asylum, Armagh.
1870. Lawrence, Alexander, M.A., M.D., County Asylum, Upton, Chester.
1905. Lawson, William Wilfred James, M.B.Aberd., Ch.B., Whitwell, Mansfield.
1883. Layton, Henry A., M.R.C.S.Eng., L.R.C.P.Edin., Cornwall County Asylum, Bodmin.
1899. Leeper, Richard R., F.R.C.S.I., Medical Superintendent, St. Patrick's Hospital, Dublin.
1905. Le Fanu, Hugh, M.B., C.M.Aber., County Asylum, Prestwich, Manchester
1883. Legge, Richard J., M.D., Medical Superintendent, County Asylum, Mickleover, Derby.
1906. Leggett, William, B.A., M.B., B.Ch.Dubl., Assistant Medical Officer, Kent County Asylum, Maidstone.
1894. Lentagne, John, B.A., F.R.C.S.I., Medical Visitor of Lunatics to the Court of Chancery, 42, Merrion Square, Dublin.
1899. Lewis, H. Wolseley, M.D.Brux., F.R.C.S.Eng., Medical Superintendent, Kent County Asylum, Barming Heath, Maidstone.
1879. Lewis, William Bevan, M.R.C.S., L.R.C.P., Medical Superintendent, West Riding Asylum, Wakefield.
1863. Ley, H. Rooke, M.R.C.S.Eng., Beaulieu, Westhy Road, Boscombe, Hants.
1859. Lindsay, James Murray, M.D.St.And., F.R.C.S. and F.R.C.P.Edin. Seacliff, St. Aubins, Jersey. (PRESIDENT, 1893.)
1903. Logan, Thomas Stratford, L.R.C.P. & S.Edin., L.F.P.S.Glas., Epileptic Colony, Ewell.
1906. Long, Sydney Herbert, M.D.Cantab., Physician to Norfolk and Norwich Hospital, 37, St. Giles Street, Norwich.
1899. Longworth, Stephen G., L.R.C.P. L.R.C.S.I., County Asylum, Melton, Suffolk.
1898. Lord, John R., M.B., C.M., Heath Asylum, Bexley, Kent. (*Assistant Editor of Journal since 1900.*)
1906. Lowry, James Arthur, M.B., B.Ch., B.A.O., R.U.I., Assistant Medical Officer, Middlesex County Asylum, Napsbury.
1904. Lyall, C. H. Gibson, L.R.C.P. & S.Edin., Garlands, Carlisle.
1906. Lyell, John Hepburn, M.D.Glasg., M.B., C.M., Assistant Medical Officer to H.M. Prison, the Royal Infirmary, and Parish Council, Perth, 15, Marshall Place, Perth.
1872. Lyle, Thomas, M.D.Glasg., 34, Jesmond Road, Newcastle-on-Tyne.

1906. Macarthur, John, M.R.C.S., L.R.C.P.Lond., London County Asylum, Claybury, Woodford Bridge, Essex.
1899. Macartney, William H. C., L.R.C.P.&S.I., Riverhead House, Sevenoaks.
1880. MacBryan, Henry C., L.R.C.P. & S. Edin., Kingsdown House, Box, Wilts.
1902. M'Carthy, Owen F., L.R.C.P.&S.I., District Lunatic Asylum, Cork, Ireland.
1900. McClintock, John, L.R.C.P. & L.R.C.S.Edin., Resident Medical Superintendent, Grove House, Church Stretton, Salop.
1900. McConaghey, John C., M.B., C.M.Edin., Parkside Asylum, Macclesfield, Cheshire.
1886. McCreery, James Vernon, L.R.C.S.I., Medical Superintendent, "Ormonde," Walpole Street, Kew, Victoria.
1901. MacDonald, James H., M.B., Ch.B.Glasg., Govan District Asylum, Hawkhead, Paisley, N.B.
1884. MacDonald, Peter W., M.D., C.M., Medical Superintendent, Dorset County Asylum, Herrison, Dorchester. (*Hon. Sec. S.W. Division 1894 to 1905.*)
1905. MacDonald, William Fraser, M.B., Ch.B.Edin., Drive Lodge, Polwarth Terrace, Edinburgh.
1905. McDougall, Alan, M.D.Vict., M.R.C.S., L.R.C.P.Lond., Medical Director, The David Lewis Colony, Sandle Bridge, near Alderley Edge, Cheshire.
1906. McDowall, Colin Francis Frederick, M.B., B.S.Durh., Assistant Medical Officer, City Asylum, Newcastle.
1870. McDowall, Thomas W., M.D.Edin., L.R.C.S., Medical Superintendent, Northumberland County Asylum, Morpeth. (*PRESIDENT, 1897-8.*)
1893. Macevoy, Henry John, M.D., B.Sc.Lond., M.P.C., 41, Buckley Road, Brondesbury, London, N.W.
1895. Macfarlane, Neil M., M.D.Aber., Medical Superintendent, Government Hospital, Thlotse Heights, Leribe, Basutoland, South Africa.
1883. Macfarlane, W. H., M.B. and Ch.B.Univ. of Melbourne, Medical Superintendent, Hospital for the Insane, New Norfolk, Tasmania.
1902. McGregor, John, M.B., Ch.B.Edin., Assistant Medical Officer, County Asylum, Bridgend, Glam.
1906. MacIlraith, Alex. Robert MacIntyre, Ayr District Asylum, Ayr.
1905. MacIlraith, W. MacLaren, L.R.C.P. & S.Edin., L.F.P.S.Glasg., L.D.S.R.C.S.Edin., Assistant Medical Officer, Norwich City Asylum, Hellesdon, near Norwich.
1899. McKelvey, Alexander Niel, L.&M.P.C.P.&S.I., The Asylum, Auckland, New Zealand.
1891. Mackenzie, Henry J., M.B., C.M.Edin., M.P.C., Assistant Medical Officer, The Retreat, York.
1903. Mackenzie, Theodore Charles, M.B., Ch.B.Edin., Royal Asylum, Aberdeen.
1899. Mackeown, William John, A.B., M.B., B.A., O.R.U.I., A.M.O., County Asylum, Fareham, Hants.
1873. Macleod, Murdoch D., M.B., 48, Westwood Road, Beverley, Yorks.
1901. Macleod, Neil, M.D., C.M.Edin., H.B.M. Consular Surgeon and Surgeon to the General Hospital, Shanghai, China, 12, Whangpoo Road, Shanghai.
1904. Macnamara, Eric Danvers, M.A., M.B., 9, Welbeck Street, W.
1898. Macnaughton, George W. F., M.D., F.R.C.S., 33, Lower Belgrave Street, Eaton Square, London, S.W.
1882. McNaughton, John, M.D., Medical Superintendent, Criminal Lunatic Asylum, Perth.
1882. Macphail, S. Rutherford, M.D.Edin., Derby Borough Asylum, Bowditch, Derby.
1896. Macpherson, Charles, M.D.Glas., Deputy Commissioner in Lunacy, 193, Bruntsfield Place, Edinburgh.
1886. Macpherson, John, M.D., F.R.C.P., 8, Darnaway Street, Edinburgh.

1901. McRae, G. Douglas, M.B., C.M.Edin., Assistant Physician, Royal Asylum, Morningside, Edinburgh.
1902. Macrae, Kenneth Duncan Cameron, M.B., Ch.B.Edin., Lynwood, Murrayfield, Edinburgh.
1894. McWilliam, Alexander, M.A., M.B., C.M.Aber., Medical Superintendent, Odiham, Winchfield, Hants.
1904. Manning, Ernest J., M.R.C.S., L.R.C.P.Lond., Broadmoor Asylum, Crowthorne, Berks.
1865. Manning, Henry J., B.A.Lond., M.R.C.S., Laverstock House, Salisbury.
1900. Manning, Herbert C., M.R.C.S., L.R.C.P., County Asylum, Cambridge.
1903. Marnan, John, M.B., B.Ch., Avoca, Mount Eden Road, Donnybrook, co. Dublin.
1896. Marr, Hamilton C., M.D.Glasg.Univ., Medical Superintendent, Woodilee Asylum, Lenzie.
1897. Marshall, John, M.B., C.M.Glasg., 56, Leamington Terrace, Edinburgh.
1905. Marshall, Robert Macnab, M.B., Ch.B., Oaklands, 21, Maxmill Drive, Pollokshields, Glasgow.
1896. Martin, James Charles, L.R.C.S.I., L.M., L.R.C.P., Assistant Medical Officer, District Asylum, Donegal.
1904. May, George Francis, M.D., C.M. (McGill), L.S.A., Winterton Asylum, Ferryhill, Durham.
1890. Menzies, William F., M.D., B.Sc.Edin., Medical Superintendent, Stafford County Asylum, Cheddleton, near Leek.
1891. Mercier, Charles A., M.D.Lond., F.R.C.S.Eng., Lecturer on Insanity, Westminster Hospital; Flower House, Catford, S.E.
1877. Merson, John, M.A., M.D.Aber., Medical Superintendent, Borough Asylum, Hull.
1871. Mickle, William Julius, M.D., F.R.C.P.Lond., Grove Hill Asylum, Bow, London. (PRESIDENT, 1896-7.)
1893. Middlemass, James, M.D., C.M., B.Sc.Edin., F.R.C.P., Medical Superintendent, Borough Asylum, Ryhope, Sunderland.
1898. Middlemist, George Edwyn, M.B., Keelby, Brocklesby, Lincs.
1883. Miles, George E., M.R.C.P., &c., Medical Superintendent, Hospital for the Insane, Rydalmere, New South Wales.
1887. Miller, Alfred, M.B. and B.C.Dubl., Medical Superintendent, Hatton Asylum, Warwick. (*Registrar since 1902.*)
1904. Miller, James Webster, The County Asylum, Herrison, Dorchester.
1893. Mills, John, M.B., B.Ch., and Diploma in Mental Diseases, R.U.I., District Asylum, Ballinasloe, Ireland.
1881. Mitchell, Richard B., M.D., Medical Supt., Midlothian District Asylum.
1878. Moody, James M., M.R.C.S.Eng., L.R.C.P.&L.M.Edin., Medical Superintendent, County Asylum, Cane Hill, Coulsdon, Surrey.
1885. Moore, Edw. E., M.D.Dubl., M.P.C., Medical Superintendent, District Asylum, Letterkenny, Ireland.
1906. Moore, Francis Joseph, L.R.C.P.&S.Irel., Assistant Medical Officer, London County Asylum, Banstead, Sutton, Surrey.
1899. Moore, Wm. D., M.D., M.Ch., Medical Superintendent, Holloway Sanatorium, Virginia Water, Surrey.
1892. Morrison, Cuthbert S., L.R.C.P. and L.R.C.S.Edin., Medical Superintendent, County and City Asylum, Burghill, Hereford.
1896. Morton, W. B., M.D.Lond., Assistant Medical Officer, Brislington House, Bristol.
1896. Mott, F. W., M.D., B.Sc., B.S., F.R.C.P.Lond., F.R.S., 25, Nottingham Place, London, W.
1896. Mould, Gilbert E., M.R.C.S., L.R.C.P.Lond., The Grange, Rotherham, Yorks.

1862. Mould, George W., M.R.C.S.Eng., Oak Monnt, Colvin Bay, N. Wales. (PRESIDENT, 1880.)
1897. Mould, Philip G., M.R.C.S.Eng., L.R.C.P.Lond., Assistant Medical Officer, Royal Lunatic Hospital, Cheadle, Manchester.
1897. Mumby, Bonner Harris, M.D.Aber., D.P.H.Cantab., Medical Superintendent, Borough Asylum, Portsmouth.
1893. Murdoch, James William Aitken, M.B., C.M.Glasg., Medical Superintendent, Berks County Asylum, Wallingford.
1900. Murphy, Jerome J., M.R.C.S., L.R.C.P.Lond., Banstead Asylum, Sutton, Surrey.
1878. Murray, Henry G., L.R.C.P.I., L.M., L.R.C.S.I., Assistant Medical Officer, Prestwich Asylum, Manchester.
1905. Murrell, Christine Mary, M.D.Lond., B.S., Royal Free Hospital, 86, Porchester Terrace, Hyde Park, W.
1904. Nash, Arthur Charles, M.R.C.S., L.R.C.P.Lond., County Asylum, Mickleover, Derby.
1903. Navarra, Norman, M.R.C.S., L.R.C.P., City of London Asylum, Stone, Dartford.
1880. Neil, James, M.D., M.P.C., Medical Superintendent, Warneford Asylum, Oxford.
1903. Nelis, William F., M.D., Newport Borough Asylum, Caerleon, Mon.
1875. Newington, Alexander, M.B.Camb., M.R.C.S.Eng., Woodlands, Ticehurst.
1873. Newington, H. Hayes, F.R.C.P.Edin., M.R.C.S.Eng., The Gables, Ticehurst, Sussex. (PRESIDENT, 1889.) (*Treasurer.*)
1904. Nicholl, Robert Campbell, L.R.C.P. & S.I., Hatton Asylum, nr. Warwick.
1869. Nicolson, David, C.B., M.D., C.M.Aber., M.R.C.P.Edin., F.S.A.Scot., Balgownie, Edgeborough Road, Guildford. (PRESIDENT, 1895-6.)
1899. Nixon, John C., M.B., West Riding Asylum, Menston, nr. Leeds.
1893. Nobbs, Athelstane, M.D., C.M.Edin., Layton House, Upper Richmond Road, S.W.
1888. Nolan, Michael J., L.R.C.P.I., M.P.C., Medical Superintendent, District Asylum, Downpatrick.
1880. Norman, Conolly, F.R.C.P.I., Medical Superintendent, Richmond District Asylum, Dublin, Ireland. (*Hon. Secretary for Ireland, 1887-1894.*) (PRESIDENT, 1894-5.) (*Co-Editor of Journal since 1895.*)
1885. Oakshott, James A., M.D., Medical Superintendent, District Asylum, Waterford, Ireland.
1906. O'Brien, Mary, L.S.A., Borough Asylum, Leicester.
1903. O'Doherty, Patrick, B.A. and M.B.Irel., District Asylum, Omagh.
1904. O'Downey, Augustine Francis, L.R.C.P. & S. Edin., Salop and Montgomery County Asylum, Bicton Heath, nr. Shrewsbury.
1901. Ogilvy, David, B.A., M.D., B.Ch., L.M.Dub., Senior Assistant Medical Officer, London County Asylum, Horton, nr. Epsom, Surrey.
1892. O'Mara, Francis, L.R.C.P.&S.I., District Asylum, Ennis, Ireland.
1886. O'Neill, Edward D., M.R.C.P.I., Medical Superintendent, The Asylum, Limerick.
1868. Orange, William, M.D.Heidelb., F.R.C.P.Lond., C.B., Oakhurst, Godalming, Surrey. (PRESIDENT, 1883.)
1902. Orr, David, M.B., C.M.Edin., Pathologist, County Asylum, Prestwich, Lancs.
1899. Osburne, Cecil A. P., F.R.C.S.Edin., L.R.C.P.Edin., The Grove, Old Catton, Norwich.
1890. Oswald, Landel R., M.B., M.P.C., Physician Superintendent, Royal Asylum, Gartnavel, Glasgow.
1899. Owen, Corbet W., M.B., C.M.Edin., 31, High Street, Bangor, North, Wales.

1905. Paine, Frederick, M.R.C.S., L.R.C.P., Claybury Asylum, Woodford Bridge, Essex.
1898. Parker, William Arnot, M.B., C.M., Medical Superintendent, Gartloch Asylum, Gartcosh, N.B.
1898. Pasmore, Edwin Stephen, M.D.Lond., M.R.C.P.Lond., Croydon Mental Hospital, Warlingham, Surrey.
1901. Passmore, Wm. Edwin, L.S.A.Lond., Forest View, Woodford Bridge, Essex.
1899. Paton, Robert N., L.R.C.P., L.R.C.S.Edin., Medical Officer, H.M. Prison, Wormwood Scrubbs, London, W.
1899. Patrick, John, M.B., Ch.B., District Asylum, Belfast.
1892. Patterson, Arthur Edward, M.D., C.M.Aber., Senior Assistant Medical Officer, City of London Asylum, Dartford.
1905. Paul, Maurice Eden, M.D.Bru., M.R.C.S., L.R.C.P., Moorcroft, Parkstone, Dorset.
1903. Pearce, Francis H., M.B., B.C.Cantab., Madeley Court, Salop.
1893. Perceval, Frank, M.R.C.S.Eng., L.R.C.P.Lond., Medical Superintendent, County Asylum, Prestwich, Manchester, Lancashire.
1878. Philipps, Sutherland Rees, M.D., C.M. Queen's Univ. Irel., F.R.G.S., 60, Iverna Court, Kensington, W.
1875. Philipson, Sir George Hare, M.D. and M.A.Cantab., F.R.C.P.Lond., 7, Eldon Square, Newcastle-on-Tyne.
1906. Phillips, Nathaniel Richard, M.R.C.S., L.R.C.P.Lond., Assistant Medical Officer, London County Asylum, Banstead, Sutton, Surrey.
1905. Phillips, Norman Routh, M.D.Bru., M.R.C.S., L.R.C.P., Stone House, St. Martins, Canterbury.
1891. Pierce, Bedford, M.D.Lond., F.R.C.P., Medical Superintendent, The Retreat, York. (*Hon. Sec. N. and M. Division.*)
1888. Pietersen, J. F. G., M.R.C.S., Ashwood House, Kingswinford, near Dudley, Stafford.
1896. Planck, Charles, M.A.Camb., M.R.C.S.Eng., L.R.C.P.Lond., Assistant Medical Officer, The Asylum, Haywards Heath.
1889. Pope, George Stevens, L.R.C.P.&L.R.C.S.Edin., L.F.P.&S.Glasg., Medical Superintendent, Somerset and Bath Asylum, "Westfield," near Wells, Somerset.
1876. Powell, Evan, M.R.C.S.Eng., L.S.A., Medical Superintendent, Borough Lunatic Asylum, Nottingham.
1904. Pringle, Archibald Douglas, Government Asylum, Pietermaritzburg, Natal, South Africa.
1875. Pringle, Henry T., M.D.Glasg., Hawtree, Ferndown, Wimborne.
1901. Pugh, Robert, M.D.Edin., Ch.B., Medical Superintendent, Brecon and Radnor Asylum, Talgarth, S. Wales.
1904. Quin, Henry C. E., L.R.C.P., L.R.C.S.Edin., Camberwell House, Peckham Road, S.E.
1904. Race, John Percy, M.R.C.S., L.R.C.P., L.S.A., Assistant Medical Officer, London County Asylum, Colney Hatch, N.
1899. Rainsford, F. E., M.D., B.A., Resident Physician, Stewart Institute, Palmerston, co. Dublin.
1894. Rambaut, Daniel F., M.A., M.D.Univ. Dubl., Salop and Montgomery Asylum, Bicton Heath, Shrewsbury.
1902. Rattray, A. Mair, M.B., C.M.Edin., City Asylum, Gosforth, Newcastle-on-Tyne.
1889. Raw, Nathan, M.D., F.R.C.S., Mill Road Infirmary, Liverpool.
1893. Rawes, William, M.D.Durh., F.R.C.S.Eng., Medical Superintendent, St. Luke's Hospital, Old Street, London, E.C.
1870. Rayner, Henry, M.D.Aberd., M.R.C.P.Edin., 16, Queen Anne Street, London, W. (PRESIDENT, 1884.) (*General Secretary, 1878-89.*) (*Co-Editor of Journal since 1895.*)
1903. Read, George F., L.R.C.S., L.R.C.P.Edin., Hospital for the Insane, New Norfolk, Tasmania.

Members of the Association.

1899. Redington, John, F.R.C.S.&L.R.C.P.I., A.M.O., Richmond Asylum, Dublin.
1887. Reid, William, M.D., Physician Superintendent, Royal Asylum, Aberdeen.
1886. Revington, George, M.D., and Stewart Scholar Univ. Dubl., M.P.C., Medical Superintendent, Central Criminal Asylum, Dundrum, Ireland.
1903. Rhodes, John Milson, M.D.Brux., L.R.C.P.&S.Edin., Ivy Lodge, Barlow Moor, Didsbury, Manchester.
1899. Rice, David, M.R.C.S., L.R.C.P., Cheddleton Asylum, nr. Leeks, Staffs.
1897. Richard, William J., M.A., M.B., C.M.Glasg., Medical Officer, Govan Parochial Asylum, Merryflats, Govan.
1899. Richards, John, M.B., C.M.Edin., Leicestershire and Rutland Asylum, Leicester.
1905. Ridley, Edward Hope, M.D.Edin., Ticehurst House, Ticehurst, Sussex.
1904. Rigden, Alan, M.D.Durh., Salop and Montgomery Asylum, nr. Shrewsbury.
1893. Rivers, William H. R., M.A., M.D.Lond., St. John's College, Cambridge University.
1903. Roberts, Norcliffe, M.B., B.S.Durh., London County Asylum, Cane Hill, Coulsdon, Surrey.
1871. Robertson, Alexander, M.D.Edin., 11, Woodside Crescent, Glasgow.
1905. Robertson, Constance C., M.D.Durh., B.S., Semmercote, Darlington.
1887. Robertson, Geo. M., M.B., C.M. and F.R.C.P.Edin., M.P.C., Medical Superintendent, District Asylum, Larbert, Stirling.
1895. Robertson, William Ford, M.D., C.M., 9, Priestfield Road, Edinburgh.
1905. Robertson-Milne, Capt. Charles John, M.B., C.M.Aberd., Superintendent, Bengal Central Asylum, Berhampur, Bengal.
1900. Robinson, Harry A., M.D., Ch.B.Vict., 57, Canning Street, Liverpool.
1876. Rogers, Edward Coulton, M.R.C.S.Eng., L.S.A., County Asylum, Fulbourn, Cambridge.
1859. Rogers, Thomas Lawes, M.D.St. And., M.R.C.P.Lond., M.R.C.S.Eng., Eastbank, Court Road, Eltham, Kent. (PRESIDENT, 1874.)
1895. Rolleston, Lancelot W., M.B., B.S.Durh., Medical Superintendent, Middlesex County Asylum, Napsbury, near St. Albans.
1879. Ronaldson, J. B., M.D.St.And., F.R.C.S.&L.R.C.P.Edin., Medical Officer, District Asylum, Haddington, N.B.
1879. Roots, William H., M.R.C.S., Canbury House, Kingston-on-Thames.
1899. Rorie, George Arthur, M.B., C.M., Senior Assistant Medical Officer, Dorset County Asylum, Dorchester.
1860. Rorie, James, M.D.Edin., L.R.C.S.Edin., 4, Roxburgh Terrace, West Park Road, Dundee. (*Late Hon. Secretary for Scotland.*)
1888. Ross, Chisholm, M.D., Lunacy Department, Sydney, New South Wales.
1905. Ross, Sheila Margaret, M.B., Holloway Sanatorium, Virginia Water, Surrey.
1899. Rotherham, Arthur, M.A., M.B., B.C.Cantab., Medical Superintendent, Darenth Asylum, Dartford, Kent.
1902. Round, John, L.R.C.P., L.R.C.S., L.F.P.S., 30, New Cross Road, S.E.
1906. Rowan, Marriott Logan, B.A., M.D., R.M.I., Assistant Medical Officer, Derby County Asylum, Mickleover.
1884. Rowe, Edmund L., L.R.C.P.&S.Edin., Medical Superintendent, Borough Asylum, Ipswich.
1883. Rowland, E. D., M.B., C.M.Edin., The Public Hospital, New Amsterdam, Berbice, British Guiana.

1902. Rows, Richard Gundry, M.D.Lond., M.R.C.S., L.R.C.P., Pathologist, County Asylum, Lancaster.
1877. Russell, Arthur P., M.B., M.R.C.P.Edin., The Lawn, Lincoln.
1866. Rutherford, James, M.D.Edin., F.R.C.P.Edin., F.F.P.S.Glasgow, Physician Superintendent, Crichton Royal Institution, Dumfries. (*Hon. Secretary for Scotland, 1876-86.*)
1896. Rutherford, James Mair, M.B., C.M.Edin., Assistant Physician, Royal Edinburgh Asylum, Morningside.
1896. Rutherford, Robert Leonard, M.D., Medical Superintendent, Digby's Asylum, Exeter.
1892. Rutledge, Victor J., M.B., District Asylum, Londonderry, Ireland.
1902. Sall, Ernest Frederick, M.R.C.S.Eng., L.R.C.P.Lond., Assistant Medical Officer, West Sussex County Asylum, Chichester.
1905. Salter, Charles Edward, M.D.Lond., B.S., F.R.C.S.E., Scarborough Hospital, 34, Prince of Wales Terrace, Scarborough.
1894. Sankey, Edward H. O., M.A., M.B., B.C.Cantab., Resident Medical Licensee, Boreatton Park Licensed House, Baschurch, Salop.
- * Sankey, R. H. Heurtley, M.R.C.S.Eng., 3, Marston Ferry Road, Oxford.
1873. Savage, Geo. H., M.D.&F.R.C.P.Lond., 26, Devonshire Place, W. (*Late Editor of Journal.*) (PRESIDENT, 1886.)
1906. Scanlan, John, L.R.C.S.Edin., Assistant Medical Officer, Devon County Asylum, Exminster.
1896. Scott, James, M.B., C.M.Edin., 19, Raleigh Gardens, Brixton Hill, London, S.W.
1889. Scowcroft, Walter, M.R.C.S., Medical Superintendent, Royal Lunatic Hospital, Cheadle, near Manchester.
1880. Seccombe, George S., M.R.C.S., L.R.C.P., The Colonial Lunatic Asylum, Port of Spain, Trinidad, West Indies.
1879. Seed, William Hy., M.B., C.M.Edin., The Poplars, 110, Waterloo Road, Ashton-on-Ribble, Preston.
1906. Sephton, Robert Poole, B.A.Cantab., M.R.C.S.Eng., L.R.C.P.Lond., County Lunatic Asylum, Lancaster.
1882. Seward, William J., M.B.Lond., M.R.C.S., Medical Superintendent, Colney Hatch Asylum, London, N.
1901. Shaw, B. Henry, M.B., B.Ch., B.A.O., R.M.I., Assistant Medical Officer, County Asylum, Stafford.
1905. Shaw, Charles John, M.B., Ch.B., M.R.C.P.E., Montrose Asylum.
1891. Shaw, Harold B., B.A., M.B., D.P.H.Camb., Medical Superintendent, Isle of Wight County Asylum, Whitecroft, Newport, Isle of Wight.
1880. Shaw, James, M.D., 310, Kensington, Liverpool.
1904. Shaw, Patrick, L.R.C.P.&S.Edin., Ararat Hospital for the Insane, Ararat, Victoria, Australia.
- Shaw, T. Claye, M.D.Lond., F.R.C.P.Lond., 30, Harley Street, London, W.
1882. Sheldon, Thomas S., M.B., Medical Superintendent, Cheshire County Asylum, Parkside, Macclesfield.
1900. Shera, John E. P., M.D., Somerset County Asylum, Wells, Somerset.
1877. Shuttleworth, George E., M.D.Heidelb., M.R.C.S. and L.S.A.Eng., B.A. Lond., late Medical Superintendent, Royal Albert Asylum, Lancaster; Parkholme, East Sheen, S.W.
1899. Sibley, Reginald Oliver, M.B.Lond., M.R.C.S., L.R.C.P., Assistant Medical Officer, London County Asylum, Cane Hill, Coulsdon, Surrey.
1906. Sievwright, Henry Gates, M.R.C.S., L.R.C.P.Lond., Assistant Medical Officer, Monmouth Asylum, Abergavenny.
1901. Simpson, Alexander, M.A., M.D.Aber., Medical Superintendent, County Asylum, Winwick, Newton-le-Willows, Lancashire.
1905. Simpson, Edward Swan, M.B., Ch.B.Edin., East Riding Asylum, Beverley, Yorks.

1888. Sinclair, Eric, M.D.Glasg., Medical Superintendent, Gladesville Asylum, New South Wales.
1891. Skeen, James Humphry, M.B., C.M.Aber., Medical Superintendent, Glasgow District Asylum, Bothwell.
1898. Skeen, William St. John, M.B., C.M., County Asylum, Winterton, Ferryhill, Durham.
1900. Skinner, Ernest W., M.D., C.M.Edin., Mansfield, Rye, Sussex.
1901. Slater, George N. O., M.D., Assistant Medical Officer, Essex County Asylum, Brentwood.
1897. Smalley, Herbert, M.D.Durh., L.R.C.P., M.R.C.S., Prison Commission, Home Office, Whitehall, S.W.
1905. Smith, George William, M.B., Holloway Sanatorium, Virginia Water, Surrey.
1899. Smith, John G., M.D., Herts County Asylum, Hill End, St. Albans, Herts.
1904. Smith, Peter Campbell, L.R.C.P.&S.Edin., 4, Upper Grosvenor Road, Tunbridge Wells.
1885. Smith, R. Percy, M.D., B.S., F.R.C.P., M.P.C., 36, Queen Anne Street, Cavendish Square, W. (*General Secretary*, 1896-7.) (*PRESIDENT*, 1904-5.)
1884. Smith, W. Beattie, F.R.C.S.Edin., L.R.C.P.Lond., 4, Collins Street, Melbourne, Victoria.
1903. Smith, William Maule A., M.B., ChB.Edin., M.R.C.P.Edin., West Riding Asylum, Wakefield, Yorks.
1901. Smyth, Robt. B., M.A., M.B., Ch.B., Senior Assistant Medical Officer, County Asylum, Gloucester.
1899. Smyth, Walter S., M.B., B.Ch., R.U.I., Assistant Medical Officer, County Asylum, Antrim.
1885. Soutar, James Grieg, M.B., Barnwood House, Gloucester.
1906. Spark, Percy Charles, M.R.C.S., L.R.C.P.Lond., London County Asylum, Hanwell, W.
1883. Spence, John Buchan, M.D., M.C., The Asylum, Colombo, Ceylon.
1875. Spence, J. Beveridge, M.D., M.C.Queen's Univ., Medical Superintendent, Burntwood Asylum, near Lichfield. (*PRESIDENT*, 1899-1900, formerly *Registrar*.)
1891. Stansfield, T. E. K., M.B., C.M.Edin., Baldwyn's Park, Bexley, Kent.
1901. Starkey, William, M.B., B.Ch., B.A.O.Roy. Univ. Irel., Assistant Medical Officer, Lancashire County Asylum, Prestwich, near Manchester.
1898. Steen, Robert H., M.D.Lond., B.A., R.U.I., Medical Superintendent, City of London Asylum, Stone, Dartford.
1905. Stevenson, William Edward, M.B., B.S.Durh., West Riding Asylum, Menston, Leeds.
1905. Stewart, Frederick William, B.A., M.B., B.Ch., B.A.O.I., Kent County Asylum, Barming Heath, near Maidstone.
1868. Stewart, James, B.A.Queen's Univ.Irel., F.R.C.P.Edin., L.R.C.S.Irel., Junior Constitutional Club, Piccadilly, S.W.
1887. Stewart, Rothsay C., M.R.C.S., Medical Superintendent, County Asylum, Leicester.
1905. Stillwell, Henry Francis, L.R.C.P.&S.E., Barnwood House, Gloucester.
1862. Stilwell, Henry, M.D.Edin., M.R.C.S.Eng., Moorcroft House, Hillingdon, Middlesex.
1899. Stilwell, Reginald J., M.R.C.S., L.R.C.P., Moorcroft House, Hillingdon, Middlesex.
1864. Stocker, Alonzo Henry, M.D.St. And., M.R.C.P.Lond., M.R.C.S.Eng., Medical Superintendent, Peckham House Asylum, Peckham.
1897. Stoddart, William Henry Butter, M.D., B.S.Lond., M.R.C.S.Eng., M.R.C.P.Lond., Bethlem Royal Hospital, London, S.E.
1905. Strathearn, John, M.B., Ch.B., British Ophthalmic Hospital, Jerusalem.

1903. Stratton, Percy Haughton, M.R.C.S., L.R.C.P.Lond., The Royal Societies Club, St. James's Street, S.W.
1885. Street, C. T., M.R.C.S., L.R.C.P., Haydock Lodge, Ashton, Newton-le-Willows, Lancashire.
1900. Sturrock, James Prain, M.A., M.B., C.M.Edin., Midlothian and Peebles Asylum, Roslynlee, N.B.
1886. Suffern, Alex. C., M.D., Medical Superintendent, Ruberry Hill Asylum near Bromsgrove, Worcestershire.
1894. Sullivan, William C., M.D.R.U.I., 444, Camden Road, London, N.
1898. Sutcliffe, John, M.R.C.S., L.R.C.P., Royal Asylum, Cheadle, near Manchester.
1903. Sutherland, David, M.B., Ch.B.Edin., Pathologist, The Dispensary, Worksop, Notts.
1895. Sutherland, John Francis, M.D.Edin., Deputy Commissioner in Lunacy, 51, Queen Street, Edinburgh.
1877. Swanson, George I., M.D.Edin., The Pleasaunce, Heworth Moor, York.
1901. Sykes, Arthur, M.R.C.S., L.R.C.P., Assistant Medical Officer, City Asylum, Hellesdon, nr. Norwich.
1897. Tait, James Sinclair, M.D., L.R.C.P.Lond., F.R.C.S.Edin., L.R.C.P. Edin., D.P.H.Edin., R.C.P.S.Edin., F.P.S.Glasg., Medical Superintendent, Hospital for Insane, St. John's, Newfoundland.
1904. Tate, Robert George H., M.D., D.P.H., Lt. R.A.M.C.
1857. Tate, William B., M.D.Aber., M.R.C.P.Lond., M.R.C.S.Eng., Medical Superintendent, Lunatic Hospital, The Coppice, Nottingham.
1897. Taylor, Frederic Ryott Percival, M.D., B.S.Lond., M.R.C.S.Eng., L.R.C.P.Lond., Medical Superintendent, East Sussex Asylum, Hellingly.
1904. Thompson, Alexander D., M.B., Ch.B.Glasg., Monmouthshire Asylum, Abergavenny.
1880. Thomson, David G., M.D., C.M., Medical Superintendent, County Asylum, Thorpe, Norfolk.
1903. Thomson, Herbert Campbell, M.D., F.R.C.P.Lond., Assist. Physician Middlesex Hospital, 34, Queen Anne Street, W.
1905. Thomson, James Hutcheon, M.B., Ch.B.Aberd., Earlswood Asylum, Redhill, Surrey.
1905. Thwaites, Harry, M.R.C.S., L.R.C.P.Lond., Medical Superintendent, Lebanon Hospital, Asfuriyeh, near Beyrou, Syria.
1905. Tidbury, Robert, M.D., R.U.I., M.Ch., L.M., The Borough Asylum, Ipswich.
1901. Tighe, John V. G. B., M.B., B.Ch., B.A.O.Irel., North Riding Asylum, Clifton, Yorks.
1900. Tinker, William, M.R.C.S., L.R.C.P., Hordle House, Brockenhurst, Hants.
1898. Todd, Percy Everard, M.B., Medical Superintendent, Pretoria Asylum, Transvaal, South Africa.
1905. Toogood, Frederick Sherman, M.D.Lond., Medical Superintendent, The Infirmary, High Street, Lewisham.
1903. Topham, J. Arthur, B.A.Cantab., M.R.C.S.&P.Lond., County Asylum, Chartham, Kent.
1896. Townsend, Arthur A. D., M.D., Assistant Medical Officer, Hospital for Insane, Barnwood House, Gloucester.
1904. Treadwell, Oliver Ferreira Naylor, M.R.C.S.Eng., L.S.A., H. M. Prison, Parkhurst, I. of W.
1903. Tredgold, Alfred F., M.R.C.S., L.R.C.P., 6, Dapdune Crescent, Guildford, Surrey.
1902. Trevelyan, Edmund Fauriel, M.D.Lond., F.R.C.P.Lond., Assistant Physician to the Leeds General Infirmary, 40, Park Square, Leeds.
1881. Tuke, Charles Molesworth, M.R.C.S.Eng., Chiswick House, Chiswick.
1888. Tuke, John Batty, jun., M.D., F.R.C.P.Edin., Resident Physician, Saughton Hall, Edinburgh; Linden Lodge, Loanhead, Midlothian.

1885. Tuke, T. Seymour, M.A., M.B., B.Ch., M.R.C.S.E., Chiswick House, Chiswick, W.
1877. Turnbull, Adam Robert, M.B., C.M.Edin., Medical Superintendent, Fife and Kinross District Asylum, Cupar. (*Late Hon. Secretary for Scotland.*)
1906. Turnbull, Peter Mortimer, M.B., B.Ch.Aberd., Tooting Bec Asylum, Tooting, S.W.
1889. Turner, Alfred, M.D., C.M., Plympton House, Plympton, S. Devon.
1906. Turner, Frank Douglas, M.B.Lond., M.R.C.S., L.R.C.P., Medical Officer, Eastern Counties Asylum for Idiots, Colchester.
1890. Turner, John, M.B., C.M.Aberd., Senior Assistant Medical Officer, Essex County Asylum, Brentwood.
1903. Turner, Oliver P., M.R.C.S., L.R.C.P., Peckham House, Peckham, S.E.
1878. Urquhart, Alex. Reid, M.D., F.R.C.P.E., Physician Superintendent, James Murray's Royal Asylum, Perth. (*Co-Editor of Journal since 1894.*) (*Hon. Secretary for Scotland, 1886-94.*) (*PRESIDENT, 1898-9.*)
1900. Veitch, J. Ogilvie, M.B., C.M.Edin., County Asylum, Powick, Worcester.
1904. Vincent, George A., M.B., B.Ch.Edin., Assistant Medical Superintendent, St. Ann's Asylum, Trinidad, B.W.I.
1894. Vincent, William James, M.B.Durh., Assistant Medical Officer, Wadsley Asylum, near Sheffield.
1884. Walker, Edw. B. C., M.D., C.M.Edin., Medical Superintendent, East Sussex Asylum, Haywards Heath.
1896. Walker, William F., L.R.C.S.&L.M.Edin., L.S.A.Lond., Plas-yn-Dinas, Dinas Mawddwy, Merionethshire.
1900. Walters, John Basil, M.R.C.S.Eng., L.R.C.P.Lond., 51, Devonshire Street, Portland Place, London, W.
1889. Warnock, John, M.D., C.M., B.Sc., Abassia, nr. Cairo, Egypt.
1895. Waterston, Jane Elizabeth, M.D.Brux., L.R.C.P.I., L.R.C.S.Edin., 58, Parliament Street, Cape Town, South Africa.
1902. Watson, Frederick, M.B., C.M.Edin., The Grange, East Finchley, London, N.
1891. Watson, George A., M.B., C.M.Edin., M.P.C., County Asylum, Rainhill, Liverpool.
1885. Watson, William Riddell, L.R.C.S. and L.R.C.P.Edin., Govan District Asylum, Hawkhead, Paisley.
1880. Weatherly, Lionel A., M.D., M.R.C.S., Bailbrook House, Bath.
1897. Welsh, Gilbert Aitken, M.D., C.M.Edin., The Crescent, Garliestown, N.B.
1880. West, George Francis, L.R.C.P.Edin., Medical Superintendent, District Asylum, Kilkenny, Ireland.
1872. Whitcombe, Edmund Bancks, M.R.C.S., Medical Superintendent, Winson Green Asylum, Birmingham. (*PRESIDENT, 1891.*)
1884. White, Ernest William, M.B.Lond., M.R.C.P.Lond., Fenstanton, Christchurch Road, Streatham Hill, S.W. (*Hon. Sec. South-Eastern Division, 1897-1900.*) (*PRESIDENT 1903-4.*)
1905. White, Robert George, M.A., M.B., B.Sc., Ch.B., Pathological Department, School of Medicine, Cairo, Egypt.
1903. Whittingham, George M., M.R.C.S., L.R.C.P., 77, Foxbourne Road, Balham, S.W.
1905. Whittington, Richard, M.A., M.D., 1, Sillwood Place, Brighton, Sussex.
1889. Whitwell, James Richard, M.D. and C.M., Medical Superintendent, Suffolk County Asylum, Melton Woodbridge.
1903. Wigan, Charles Arthur, M.D.Durh., M.R.C.S.Eng., Deepdene, Portishead, Somerset.
1883. Wiglesworth, Joseph, M.D., F.R.C.P.Lond., Rainhill Asylum, Lancashire. (*PRESIDENT, 1902-3.*)
1895. Wilcox, Arthur William, M.D., C.M.Edin., Assistant Medical Officer, County Asylum, Hatton, Warwick.

1900. Wilkinson, H. B., M.R.C.S., L.R.C.P., Assistant Medical Officer, Plymouth Borough Asylum, Blackadon, Ivybridge, South Devon.
 1887. Will, John Kennedy, M.A., M.D., C.M., Bethnal House, Cambridge Road, N.E.
 1905. Williams, David John, M.R.C.S., L.R.C.P.Lond., Medical Superintendent The Asylum, Kingston, Jamaica.
 1901. Wilson, Albert, M.D.Edin., 1, Belsize Park, N.W.
 1904. Wilson, Geoffrey Plumpton, M.R.C.S., L.R.C.P.Lond., Kesteven Asylum Sleaford, Lincs.
 1890. Wilson, George R., M.D., C.M., M.P.C., 8, Rutland Square, Edinburgh.
 1896. Wilson, Robert, M.B., C.M.Glasg., Nailsworth, Gloucestershire.
 1897. Winder, W. H., M.R.C.S., L.R.C.P.Lond., D.P.H.Cantab., Deputy Medical Officer, H.M. Convict Prison, Aylesbury.
 1875. Winslow, Henry Forbes, M.D.Lond., M.R.C.P.Lond., 11, Burwood Place, Connaught Square, Hyde Park, W.
 1894. Wood, Guy Mills, M.B.Durh., 49, Gordon Square, London, W.C.
 1904. Wood, Martin Stanley, M.B., Ch.B.Vict., Royal Asylum, Cheadle, Cheshire.
 1903. Wood, Maurice Dale, M.D.Durh., B.S., Assistant Medical Officer, County Asylum, Haywards Heath, Sussex.
 1869. Wood, T. Outterson, M.D., M.R.C.P.Lond., F.R.C.P., F.R.C.S.Edin., 40, Margaret Street, Cavendish Square, W. (PRESIDENT, 1905-6.)
 1885. Woods, J. F., M.D., M.R.C.S., 7, Harley Street, Cavendish Square, W.
 1905. Worsley, Richard Le Geyt, M.R.C.S., L.R.C.P., H.M. Prison, Liverpool.
 1900. Worth, Reginald, M.R.C.S., L.R.C.P., Middlesex Asylum, Tooting, S.W.
 1877. Worthington, Thomas Blair, M.A., M.D., and M.C.Trin. Coll., Dubl., 95, Breconsfield Villas, Preston Park, Brighton.
 1862. Yellowlees, David, LL.D., M.D.Edin., F.F.P.S.Glasg., 6, Albert Gate, Downan Hill, Glasgow. (PRESIDENT, 1890.)

ORDINARY MEMBERS	638
HONORARY MEMBERS	32
CORRESPONDING MEMBERS	15
Total	685

Members are particularly requested to send changes of address, etc., to Dr. C. Hubert Bond, the Honorary Secretary, 11, Chandos Street, Cavendish Square, London, W., and in duplicate to the Printers of the Journal, Messrs. Adlard and Son, 22½ Bartholomew Close, London, E.C.

List of those who have passed the Examination for the Certificate of Efficiency in Psychological Medicine, entitling them to append M.P.C. (Med.-Psych. Certif.) to their names.

- | | |
|---------------------------------|---------------------------|
| Adamson, Robert O. | Cooper, Alfred J. S. |
| Adkins, Percy, R. | Cope, George Patrick. |
| Ainley, Fred Shaw. | Corner, Harry. |
| Ainslie, William. | Cotton, William. |
| Alexander, Edward H. | Couper, Sinclair. |
| Anderson, A. W. | Cowan, John J. |
| Anderson, Bruce Arnold. | Cowie, C. G. |
| Anderson, John. | Cowie, George. |
| Andriezen, W. | Cowper, John. |
| Armour, E. F. | Cox, Walter H. |
| Attegalle, J. W. S. | 8 Craig, M. |
| Aveline, H. T. S. | Cram, John. |
| Ballantyne, Harold S. | Crills, G. H. |
| Barbour, William. | Cross, Edward John. |
| Barker, Alfred James Glanville. | Cruickshank, George. |
| Bashford, Ernest Francis. | Cullen, George M. |
| Begg, William. | Cunningham, James F. |
| Belben, F. | Dalgetty, Arthur B. |
| Bird, James Brown. | Davidson, Andrew. |
| Bluchford, J. Vincent. | Davidson, William. |
| Black, Robert S. | 6 Dawson, W. R. |
| Black, Victor. | De Silva, W. H. |
| Blackwood, John. | Distin, Howard. |
| Blandford, Henry E. | Donald, Wm. D. D. |
| 7 Bond, C. Hubert. | Donaldson, R. L. S. |
| Bond, R. St. G. S. | Donellan, James O'Conor. |
| Bowlan, Marcus M. | Douglas, A. R. |
| Boyd, James Paton. | Downey, Augustine. |
| Bristowe, Hubert Carpenter. | Drummond, Russell J. |
| Brodie, Robert C. | Eames, Henry Martyn. |
| Brough, C. | Earls, James H. |
| Browne, Hy. E. | East, W. Norwood. |
| Bruce, John. | Easterbrook, Charles C. |
| Bruce, Lewis C. | Eden, Richard A. S. |
| Brush, S. C. | Edgerley, S. |
| Bulloch, William. | Edwards, Alex. H. |
| Calvert, William Dobree. | Elkins, Frank A. |
| Cameron, James. | Ellis, Clarence J. |
| Campbell, Alex Keith. | English, Edgar. |
| Campbell, Alfred W. | Eustace, J. N. |
| Campbell, Peter. | Eustace, Henry Marcus. |
| Carmichael, W. J. | Evans, P. C. |
| Carruthers, Samuel W. | Ewan, John A. |
| Carter, Arthur W. | Ezard, Ed. W. |
| Chambers, James. | Falconer, James F. |
| Chapman, H. C. | Farquharson, Wm. Fredk. |
| Christie, William. | Fennings, A. A. |
| Clarke, Robert H. | Ferguson, Robert. |
| Clayton, Frank Herbert A. | Findlay, G. Landsborough. |
| Clinch, Thomas Aldous. | Fitzgerald, Gerald. |
| Coles, Richard A. | Fleck, David. |
| Collie, Frank Lang. | Fox, F. G. T. |
| Collier, Joseph Henry. | Fraser, Donald Allan. |
| Conolly, Richard M. | Fraser, Thomas. |
| Conry, John. | Frederick, Herbert John. |
| Cook, William Stewart. | Gaudin, Francis Neel. |

- Gawn, Ernest K.
 Gemmell, William.
 Genney, Fred. S.
 Gibson, Thomas.
 Giles, A. B.
 Gill, J. Macdonald.
 Gilmour, John R.
 Goldie, E. M.
 Goldschmidt, Oscar Bernard.
 Goodall, Edwin.
 Graham, Dd. James.
 Graham, F. B.
 Grainger, Thomas.
 Grant, J. Wemyss.
 Grant, Lacklan.
 Gray, Alex. C. E.
 Griffiths, Edward H.
 Hall, Harry Baker.
 Halsted, H. C.
 Haslam, W. A.
 Haslett, William John Handfield.
 Hassell, Gray.
 Hector, William.
 Henderson, Jane B.
 Henderson, P. J.
 Hennan, George.
 Hewat, Matthew L.
 Hewitt, D. Walker.
 Hicks, John A., jun.
 Hitchings, Robert.
 Holmes, William.
 Horton, James Henry.
 Hotchkis, R. D.
 Howden, Robert.
 Hughes, Robert.
 Hutchinson, P. J.
 2 Hyslop, Thos. B.
 Ingram, Peter R.
 Jagannadhan, Annie W.
 Johnston, John M.
 Kelly, Francis.
 Kelso, Alexander.
 Kelson, W. H.
 Ker, Claude B.
 Kerr, Alexander L.
 Keyt, Frederick.
 King, David Barty.
 King, Frederick Truby.
 Laing, C. A. Barclay.
 Laing, J. H. W.
 Law, Thomas Bryden.
 Leeper, Richard R.
 Leslie, R. Murray.
 Livesay, Arthur W. Bligh.
 Livingstone, John.
 Lloyd, R. H.
 Low, Alexander.
 McAllum, Stewart.
 Macdonald, David.
 Macdonald, G. B. Douglas.
 Macdonald, John.
 Macdonald, W. F.
 Macevoy, Henry John.
 McGregor, George.
 MacInnes, Ian Lamont.
 Mackenzie, Henry J.
 Mackenzie, John Cumming.
 Mackenzie, William H.
 Mackenzie, William L.
 Mackie, George.
 McLean, H. J.
 Macmillan, John.
 5 Macnaughton, Geo. W. F.
 Macneice, J. G.
 Macpherson, John.
 Macvean, Donald A.
 Mallannah, Sreenagula.
 Marr, Hamilton C.
 Marsh, Ernest L.
 Martin, A. A.
 Martin, A. J.
 Martin, Wm. Lewis.
 Masson, James.
 Meikle, T. Gordon.
 Melville, Henry B.
 Middlemass, James.
 Mitchell, Alexander.
 Mitchell, Charles.
 Moffett, Elizabeth J.
 Monteith, James.
 Moore, Edward Erskine.
 1 Mortimer, John Desmond Ernest.
 Murison, Cecil C.
 Myers, J. W.
 Nair, Charles R.
 Nairn, Robert.
 Neil, James.
 Nixon, John Clarke.
 Nolan, Michael James.
 Norton, Everitt E.
 Orr, David.
 Orr, James.
 Orr, J. Fraser.
 Oswald, Landel R.
 Paget, A. J. M.
 Parker, William A.
 Parry, Charles P.
 Patterson, Arthur Edward.
 Patton, Walter S.
 Paul, William Moncrief.
 Pearce, Walter.
 Penfold, William James.
 Philip, James Farquhar.
 Philip, William Marshall.
 Pieris, William C.
 Pilkington, Frederick W.
 Pitcairn, John James.
 Porter, Charles.
 Price, Arthur.
 Pring, Horace Reginald.
 Rainy, Harry, M.A.
 Ralph, Richard M.
 Raunie, James.
 4 Raw, Nathan.

- | | |
|----------------------------------|----------------------------|
| Reid, Matthew A. | Stoddart, John. |
| Reuton, Robert. | 9 Stoddart, William Hy. B. |
| Rice, P. J. | Strangman, Lucia. |
| Rigden, Alan. | Strong, D. R. T. |
| Ritchie, Thomas Morton. | Stuart, William James. |
| Rivers, W. H. R. | Symes, G. D. |
| 3 Robertson, G. M. | Thompson, George Matthew. |
| Robson, Francis Wm. Hope. | Thomson, Eric. |
| Rorie, George A. | Thomson, George Felix. |
| Rose, Andrew. | Thorpe, Arnold E. |
| Rowand, Andrew. | Trotter, Robert Samuel. |
| Rudall, James Ferdinand. | Turner, W. A. |
| Rust, James. | Umney, W. F. |
| Rust, Montague. | Walker, James. |
| 10 Rutherford, J. M. | Wallace, W. T. |
| Sawyer, Jas. E. H. | Warde, Wilfred B. |
| Scott, George Brebner. | Waterston, Jane Elizabeth. |
| Scott, J. Walter. | Watson, George A. |
| Scott, William T. | Welsh, David A. |
| Sheen, Alfred W. | West, J. T. |
| Simpson, John. | Whitwell, Robert R. H. |
| Simpson, Samuel. | Wickham, Gilbert Henry. |
| Skae, F. M. T. | Will, John Kennedy. |
| Skeen, George. | Williams, D. J. |
| Skeen, James H. | Williamson, A. Maxwell. |
| Slater, William Arnison. | 4 Wilson, G. R. |
| Smith, Percy. | Wilson, James. |
| Smyth, William Johnson. | Wilson, John T. |
| Snowball, Thomas. | Wilson, Robert. |
| Soutar, James G. | Wood, David James. |
| Sproat, J. H. | Wright, Alexander, W. O. |
| Stanley, John Douglas. | Yeates, Thomas. |
| Staveley, William Henry Charles. | Yeoman, John B. |
| Steel, John. | Young, D. P. |
| Stephen, George. | Younger, Henry J. |
| Stewart, William Day. | Zimmer, Carl Raymond. |

- 1 To whom the Gaskell Prize (1887) was awarded.
- 2 To whom the Gaskell Prize (1889) was awarded.
- 3 To whom the Gaskell Prize (1890) was awarded.
- 4 To whom the Gaskell Prize (1892) was awarded.
- 5 To whom the Gaskell Prize (1895) was awarded.
- 6 To whom the Gaskell Prize (1896) was awarded.
- 7 To whom the Gaskell Prize (1897) was awarded.
- 8 To whom the Gaskell Prize (1900) was awarded.
- 9 To whom the Gaskell Prize (1901) was awarded.
- 10 To whom the Gaskell Prize (1906) was awarded.

D. STEWART & CO.,
GENERAL DRAPERY, CLOTHING, AND
BEDDING CONTRACTORS
WITH COUNTY COUNCILS, BOARDS OF GUARDIANS,
COMMITTEES OF ASYLUMS, HOSPITALS AND SCHOOLS

Blankets	Flaxens	Hosiery	Table Linens
Bedsteads	Flannels	Linoleum	Towels
Bedding	Furniture	Pillow Linens	Towelling
Calicoes	Flocks	Prints	Waterproof
Carpets	Haberdashery	Shirtings	Sheeting
Clothing	Hessians	Sheetings (Cotton)	Window
Dress Materials	Hollands	Sheetings (Linen)	Holland

D. S. & Co. at present hold Contracts with many of the largest
Institutions in London and the Provinces.

TENDERS INVITED.

16, STAINING LANE, GRESHAM STREET,
LONDON, E.C.

Telegraphic Address—"Centralize, London." Telephone—521 Bank.

'RONUK' (SANITARY) POLISH

For Floors.

POLISHES, PRESERVES, AND PURIFIES.
PREVENTS THE HARBOURING OF GERMS.



*Awarded Bronze Medal
of the Royal Sanitary
Institute.
Only Award ever
granted to a Polish.*

*Used in the Principal
Hospitals, also in the
National Gallery, Tate
Gallery, Herford
House, etc. etc.*

CONTRACT DEPARTMENT.—"RONUK," Ltd.,
make a speciality of Polishing all kinds of Flooring.
A large Staff of Specially Trained Workmen is kept
by the Company, and inquiries for Estimates for the
first preparation or maintenance of any new or pre-
viously unpolished Floors will receive immediate
attention.

Caution.—Customers should see that every package
bears the Registered Trade Mark, and that the Red
Seal is intact, as endeavours are made to sub-
stitute inferior articles on the ground that they are
the same as "RONUK."

*A Sample, with Full Particulars and Prices, will be
sent Free to any Institution on application.*

"RONUK," Ltd., Head Office and Factory, **PORTSLADE,** near **BRIGHTON.**
London Depôt: **86, YORK ROAD, LAMBETH, S.E.** Manchester Depôt: **285, DEANSGATE.**

J. Swift & Son,

MANUFACTURING OPTICIANS,

Solely appointed to H.M. Dept., War Office.

NEW HISTOLOGICAL MICROSCOPE,

with coarse adjustment by rack and pinion, fine adjustment by micrometer screw, $\frac{2}{3}$ " and $\frac{1}{6}$ " objectives, one ocular and iris diaphragm, in Cabinet.

£6 15s.

Double nose-piece **15s.** extra.

Microscope as above, but with sliding tube,
coarse adjustment.

£5 5s.

These microscopes have been supplied to the following medical schools, viz.—St. Bartholomew's, St. Mary's, Guy's, Westminster, Charing Cross, Middlesex, London Hospital, University College, and most of the Provincial Colleges.

Illustrated Circular on Application.

University Optical Works,

81, TOTTENHAM COURT ROAD, W.

Male Nurses' (TEMPERANCE) Co-operation, LIMITED,

Only Addresses - { London: 10, THAYER STREET, MANCHESTER SQUARE, W.
Manchester: 235, BRUNSWICK ST. (Facing Owens College).
Edinburgh: 7, TORPICHEN STREET.

Superior Trained MALE NURSES for Medical, Surgical, Mental, Dipsomania, Fever, and Travelling Cases supplied at a moment's notice, Day or Night. All Nurses supplied by this Association are TOTAL ABSTAINERS. SKILLED MASSEURS supplied. Terms: £1 11s. 6d. to £2 2s. or upwards per week. Nurses to receive their own fees.

F. ROUSE WALSH, Secretary.

Telephones { (London), 538, Paddington.
(Manchester), 4699, Central.
(Edinburgh), 02715, Central.

Telegrams { "Assuaged, London."
"Assuaged, Manchester."
"Assuaged, Edinburgh."

**TEMPERANCE
MALE NURSES' CO-OPERATION, LTD.,**

Head Office:

50, New Cavendish Street, Portland Place, London, W. ;

Branch Offices { 176, Oxford Road, Manchester.
9, Leamington Terrace, Edinburgh.

Incorporated under the Industrial and Provident Societies Act, 1893. (Regd. No. 3685.)

Highly trained Male Nurses for Mental, Medical, Surgical, Catheter, and all cases. Terms from £1 11s. 6d. upwards. Masseurs and Valet Attendants also supplied.

TELEPHONE NOS.
London 1472 Paddington.
Manchester 5213 Central.
Edinburgh 399 y. Central.

TELEGRAMS:
"Tactear, London."
"Tactear, Manchester."
"Surgical, Edinburgh."

M. D. GOLD, Sec.

ALWAYS USE

REFLEX

FLOOR POLISH.

REQUIRES NO MIXING WHATEVER.

Brilliantly Polishes Floors, Linoleums, Floorcloths, &c.

Economical, Cleanly, Healthful; Maximum of Lustre for Minimum of Labour.

GEO. T. COX & SONS, Ltd.,

9 & 10, ST. MARY-AT-HILL, EASTCHEAP, LONDON, E.C.

This Polish is specially adapted for use in Public Institutions and other large establishments. Samples Free on application.

ALL INFORMATION WITH REFERENCE TO

ADVERTISEMENTS

FOR THIS JOURNAL MAY BE OBTAINED OF

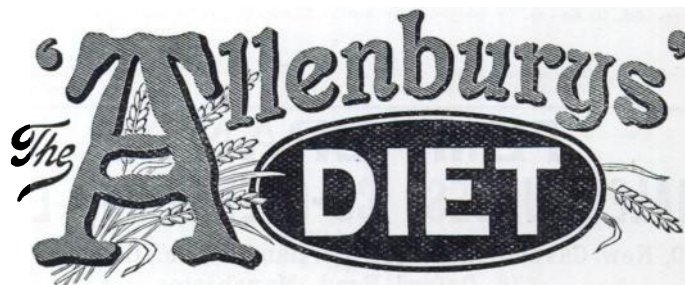
J. H. BOOTY & SON,

30, Holborn, London, E.C.

Telegrams: "Praeda, London."

Telephone: 1717 Holborn,

*A Peptonised Food that can be made in a minute, the
addition of boiling water only being necessary.*



A PANCREATISED MILK AND CEREAL FOOD.

By the use of the "Allenburys" Diet all trouble of peptonising milk and farinaceous foods is overcome. In the sick room it will be found extremely useful as the food is easily digested and assimilated, is quickly made, and only the exact quantity required need be prepared at a time.

The "Allenburys" Diet is made from pure rich milk and whole wheat, both ingredients being largely pre-digested during manufacture. It can be taken by those who cannot digest cow's milk, and provides a light and very nourishing diet for Invalids, Dyspeptics and the Aged.

For travellers by sea or land this complete food will be found exceedingly valuable.

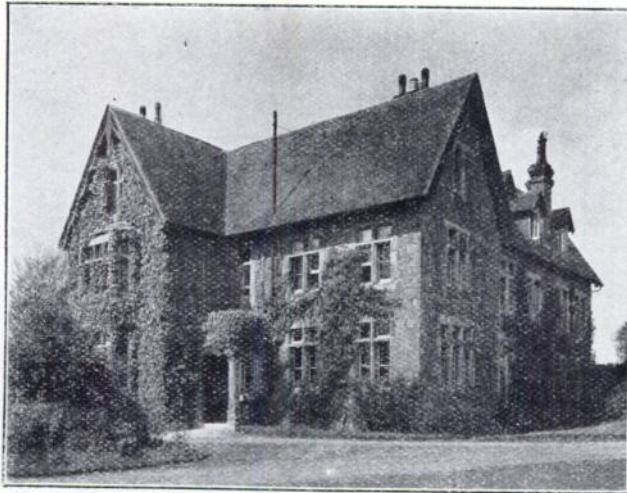
~~~~~  
**A Sample with full particulars sent free on request.**  
~~~~~

ALLEN & HANBURY'S Ltd.,

Plough Court, Lombard Street, London, E.C.

SOUTH BEACON,
HADLOW DOWN, BUXTED, SUSSEX.
Established 1892,
For the Treatment of slight Nervous or Mental Breakdown.
GENTLEMEN ONLY.
Telegrams: Hadlow Down. Stations: Buxted, Mayfield, or Heathfield.

40 Acres of Farm and Recreation
Ground, Poultry Farming.



Riding, Driving, Golf, and all Out-
door Recreation.

THE CROFT, adjoining South Beacon.



For one Gentleman only (or can be let furnished to Invalid).

PHILIP H. HARMER.