

# PREHOSPITAL and DISASTER MEDICINE

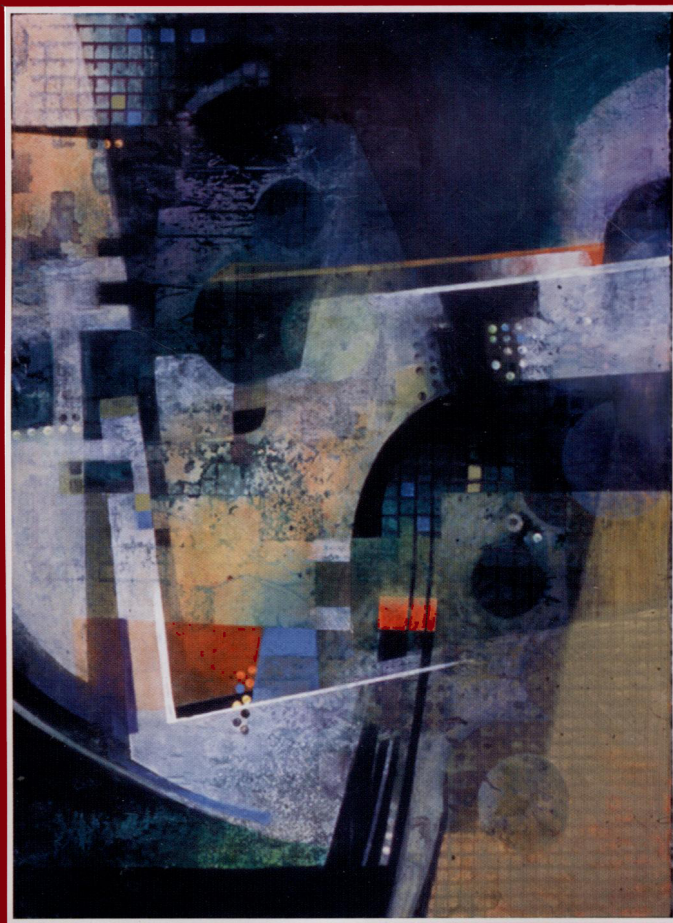
Médecine Pré-Hospitalière et Médecine de Catastrophe

Medicina Prehospitalaria y de Catástrofes

プレホスピタル(病院前救護)と災害医療

Volume 24, Number 1

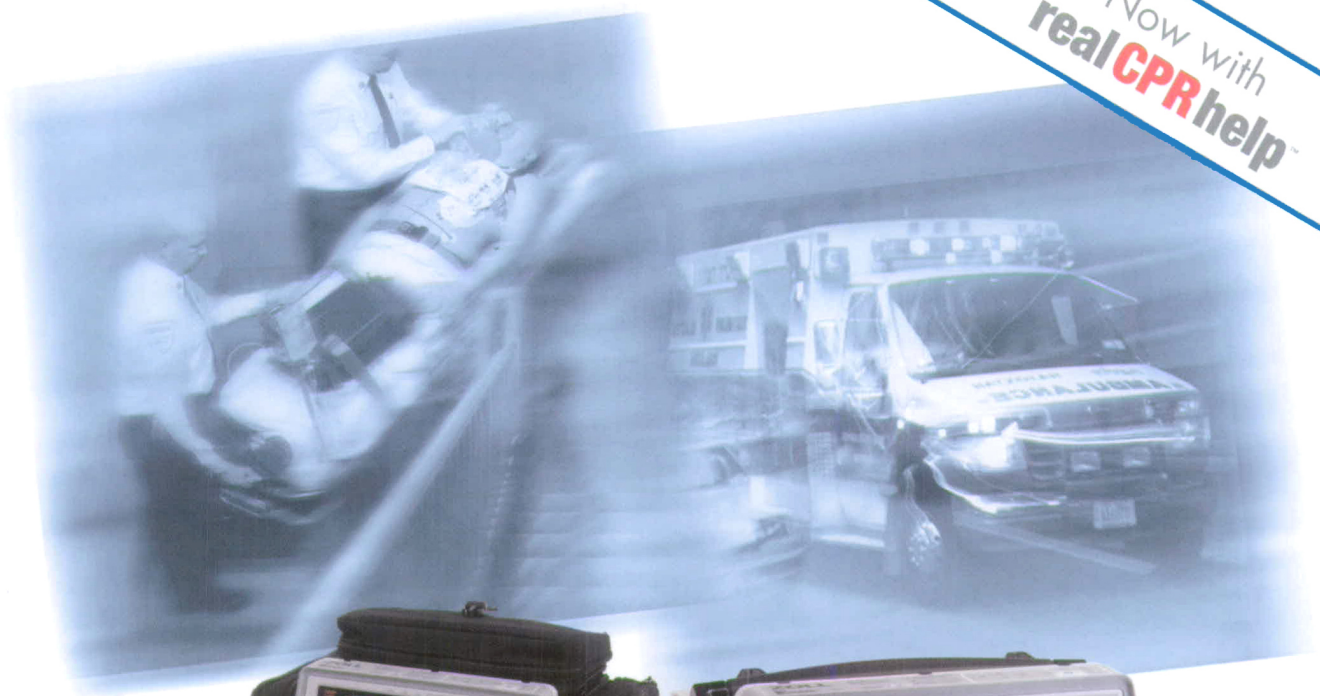
January–February 2009



<http://pdm.medicine.wisc.edu>

The Official Journal of the  
World Association for Disaster and Emergency Medicine

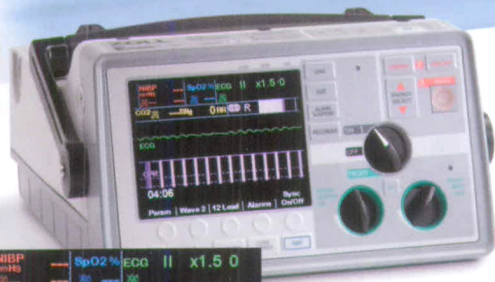
Now with  
**real CPR help™**



*Rugged soft-pack  
carry case*



*E Series*



*Simple, easy-to read screen  
with CPR feedback*

## Ruggedness. Plus Real CPR Help. It's that simple.

Now Real CPR Help™ comes standard on E Series™, making this remarkably rugged defibrillator the strongest tool ever developed for use by professional rescuers. Designed to help users provide proper CPR compression rate and depth, it functions in a way that is simple, smart and intuitive. A sensor is integrated into our exclusive one-piece **CPR-D-pad™** and new two-piece CPR **stat-pad®**. CPR prompts only occur as needed, eliminating excessive audio prompts and screen clutter. On-screen, visual cues guide the user to optimize compression depth and rate. A graphic bar acts as an easy-to-read CPR Index that compares the rate and depth of compressions to defined protocols.

Powered by rechargeable lithium ion batteries, E Series is just one more example of the ways in which ZOLL® is looking beyond defibrillation, to help rescuers save more lives. For more information, visit [www.zoll.com/realcprhelp](http://www.zoll.com/realcprhelp) or call 1-800-804-4356.

**ZOLL**  
Advancing Resuscitation. Today.™

©2006 ZOLL Medical Corporation, Chelmsford, MA, USA. "Advancing Resuscitation. Today.", E Series, **CPR-D-pad**, and Real CPR Help are trademarks of ZOLL Medical Corporation. ZOLL and **stat-pad** are registered trademarks of ZOLL Medical Corporation.

# Table of Contents

## Editor's Corner

- Competency and Competence** ..... 1  
*Marvin Birnbaum, MD, PhD; Elaine K. Daily, RN, BS, FAHA, FCCM*

## Special Report

- Potential Roles of Military-Specific Response to Natural Disasters—Analysis of the Rapid Deployment of a Mobile Surgical Team to the 2007 Peruvian Earthquake** ..... 3  
*MAJ Richard Malish, MD, FACC; SFC David E. Oliver, 18D; LTC Robert M. Rush, Jr., MD, FACS; LTC Esmeraldo Zarzabal; COL Michael J. Sigmon, MD, MPH; Frederick M. Burkle, Jr., MD, MPH, DTM*  
 -WITH-  
*Editorial Comments by Timothy F. Haley, MD, FAAP; Robert A. DeLorenzo, MD, MSM, FACEP* ..... 9

- Mississippi's Infectious Disease Hotline: A Surveillance and Education Model for Future Disasters** ..... 11  
*Andrew M.J. Cavey, MD, MPH, MRCP; Jonathan M. Spector, MD, MPH; Derek Ebrhardt, MPH, MSN; Theresa Kittle, MPH; Mills McNeill, MD, PhD; P. Gregg Greenough, MD, MPH; Thomas D. Kirsch, MD, MPH*

## Comprehensive Review

- Mustard Gas or Sulfur Mustard: An Old Chemical Agent as a New Terrorist Threat** ..... 19  
*Monica Wattana, MD, BSc; Tareq Bey, MD, FACEP*  
 -WITH-  
*Editorial Comments by Samuel J. Stratton, MD, MPH* ..... 30

- Crowd Behavior at Mass Gatherings: A Literature Review** ..... 32  
*Kathryn M. Zeitz, PhD; Heather M. Tan, M Grief, PC Couns; Christopher J. Zeitz, PhD*

## Original Research

- Application of Outcome Measures in International Humanitarian Aid: Comparing Indices through Retrospective Analysis of Corrective Surgical Care Cases** ..... 39  
*K.A. Kelly McQueen, MD, MPH; William Magee, MD, FACS; Thomas Crabtree, MD, FACS; Christopher Romano, BSE; Frederick M. Burkle, Jr., MD, MPH, DTM*

- Critical Challenges Ahead in Bioterrorism Preparedness Training for Clinicians** ..... 47  
*Kari A. Hartwig, DrPH, MA; David Burich, MSN, APRN-BC; Christopher Cannon, MSN, MPH, MBA, FAHE; Louis Massari, MPH; Lloyd Mueller, PhD; Louise-Marie Dembry, MD, MS*

- Resilience and Challenges among Staff of Gulf Coast Nursing Homes Sheltering Frail Evacuees following Hurricane Katrina, 2005: Implications for Planning and Training** ..... 54  
*Sarah B. Laditka, PhD; James N. Laditka, DA, PhD; Carol B. Cornman, BS, RN, PA; Courtney B. Davis, MHA; Jane V.E. Richter, DrPH, RN, CHES*

- Laryngeal Tube and Intubating Laryngeal Mask Insertion in a Manikin by First-Responder Trainees after a Short Video-Clip Demonstration** ..... 63  
*Jorma Jokela, RN, LHealthSci; Jouni Nurmi, BMedSci, RN, PhD; Harald V. Genzwuerker, MD; Maaret Castrén, MD, PhD*

## Brief Report

- Poison Control Centers' Role in Glow Product-Related Outbreak Detection: Implications for Comprehensive Surveillance System** .....68  
*Alvin F. Chu, MA, MPH, EdD; Steven M. Marcus, MD; Bruce Ruck, PharmD*

## Brief Special Report

- Medical Society's Blueprint for a Successful Community Response to Emergency Preparedness** .....73  
*John Maese, MD, FACP, FACEP*

### Editorial Office

University of Wisconsin-Madison USA

#### Editor-in-Chief

Marvin L. Birnbaum, MD, PhD

#### Production Editor

Dana Schmidman

#### Editorial Assistants

Sarah Covington  
 Jackson Helmer

#### Advertising

Andrew Lavelle

#### Subscriptions

Andrew Lavelle

#### Web Editor

Jackson Helmer

#### Publisher

World Association for Disaster and  
 Emergency Medicine  
 Madison, Wisconsin USA

*Prehospital and Disaster Medicine* (ISSN 1049-023X) is published bimonthly in the months of January, March, May, July, September, and November by the World Association for Disaster and Emergency Medicine. *Prehospital and Disaster Medicine* incorporates the *Journal of the World Association for Emergency and Disaster Medicine* and the *Journal of Prehospital Medicine*.

**Editorial Information:** Submit manuscripts and editorial inquiries to: Marvin L. Birnbaum, PhD, MD, Editor, *Prehospital and Disaster Medicine*, Clinical Science Center, 600 N. Highland Ave, Mail Code 6733, Madison, WI 53792 USA; Telephone (+1) (608) 263-9641; Facsimile (+1) (608) 265-3037; E-mail: mlb@medicine.wisc.edu or pdm@medicine.wisc.edu.

**Subscription Information:** One year (six issues)—Institutions: [US] \$400; Individuals: \$120; International subscribers add \$6 per year for postage. Claims of non-receipt or damaged issues must be filed within three months of cover date. POSTMASTER: Send address changes to *Prehospital and Disaster Medicine*, PO Box 55158, Madison, WI 53705-8958 USA.

**Advertising Information:** Andrew Lavelle; *Prehospital and Disaster Medicine*, Clinical Science Center, 600 N. Highland (6733), Madison, WI 53792 USA; E-mail: pdm@medicine.wisc.edu.

Comprehensively indexed by the National Library of Medicine (MEDLINE), Cumulative Index to Nursing and Allied Health (CINAHL) and Health Star Cumulative Index. The database is available online via BRS, Data-Star, and DIA-LOG, and on CD-ROM through CD Plus, Compact Cambridge and Silver Platter. Abstracts and search capability available on the Internet at <http://pdm.medicine.wisc.edu>.

Copyright © 2009 by the World Association for Disaster and Emergency Medicine. Periodicals postage paid at Madison, WI and at additional mailing offices.

## STATEMENT OF OWNERSHIP

Statement of Ownership—Management and Circulation—Required by 39 U.S.C. 3685

1. Publication title: *Prehospital and Disaster Medicine*
2. Publication number 1049-023X
3. Filing date: October 30, 2008
4. Issue frequency: Bi-Monthly
5. Number published annually: 6
6. Annual subscription price: \$120.00 Individual/\$400.00 Institution
7. Mailing address of known office of publications: 3330 University Avenue, Suite 130 (Dane County) Madison, WI 53705-2167 USA
8. Mailing address of the headquarters of the general business office of the publisher: Same.
9. Publisher: World Association for Disaster and Emergency Medicine, 3330 University Avenue, Suite 130 (Dane County) Madison, WI 53705-2167 USA
10. Owner: World Association for Disaster and Emergency Medicine, 3330 University Avenue, Suite 130 (Dane County) Madison, WI 53705-2167 USA
11. Known: bondholders, mortgages, and other security holders owning or holding 1 percent or more of total amounts of bonds, mortgages or other securities: None.
12. The purpose and function and nonprofit status of this organization and the exempt status for federal income tax purposes have not changed during the preceding 12 months.

### Extent and Nature of Circulation:

1. Total copies: 800-aveg. per issue during preceding 12 months/1,100 last issue.
2. Paid/Requested Circulation: Outside country mail subscriptions 326
3. Others mailed through USPS 2
4. Free distribution outside the mail 342
5. Copies not immediately distributed 118 (used for education and promotion)

I certify that all information furnished is true and complete.

Marvin L. Birnbaum, MD PhD, Editor-in-Chief and Director of the WADEM Business Office

## ADVERTISING POLICY AND GUIDELINES

### General Statement

*Prehospital and Disaster Medicine* (PDM) is a scientifically based, peer-reviewed, medical journal. It is the policy of the Editorial Board of PDM that all advertising material be sound scientifically, and thus, meet the following guidelines:

1. Claims must be supported scientifically, and references provided—either within the advertisement or made available upon request;
2. Every effort must be directed to minimize the likelihood of possible erroneous interpretations of the claims; and
3. Advertisements should be aimed at a sophisticated, medical audience.

Further information and rates available at our Website: <http://pdm.medicine.wisc.edu>.

### Review

Each advertisement considered for publication is submitted to the Editorial Office for review. Any advertisement that does not meet the guidelines will be returned to the advertiser with suggestions for revisions; the Editorial Office is available for consultation.

Use of these guidelines and the process used for review add to the credibility of PDM and of the product. Questions may be directed to Marvin L. Birnbaum, MD, PhD, Editor-in-Chief; (+1) (608) 263-9641; E-mail: [mlb@medicine.wisc.edu](mailto:mlb@medicine.wisc.edu).

## INFORMATION FOR READERS

### Subscription Prices (6 issues)

<b>Institutional</b>	[US]	\$400
<b>Individual</b>		\$120

"Institutional Subscribers" are defined as multiple reader subscribers and include public and private libraries, schools, hospitals, and clinics; city, county, state, provincial, and national government bureaus and departments; and all commercial and private institutions and organizations.

Individual subscriptions must be in the name of, billed to, and paid by individuals.

Send all subscription orders and questions to: *Prehospital and Disaster Medicine*, PO Box 55158, Madison, WI 53705-8958 USA.

Subscription by e-mail: [pdm@medicine.wisc.edu](mailto:pdm@medicine.wisc.edu); call (+1) (608) 263-2069; or fax (+1) (608) 265-3037. Credit cards are welcome.

### Change of Address or Missing Issues

Inform the *Prehospital and Disaster Medicine* office as soon as possible when you plan to move. (Four to six weeks notice is required for uninterrupted service.) Send: (1) old address; (2) new address; and (3) effective date of change.

### Back Issues

A limited supply of back issues not included in your subscription is available. Contact the Editorial Office for availability.

### Online Version

Issues are posted on the *Prehospital and Disaster Medicine* Website. Except for the two most current issues, articles can be downloaded without charge. The two most current issues are password protected for subscribers.

### Abstracts

All of the abstracts of papers through the most recent volume are available on the *Prehospital and Disaster Medicine* Website.

Cover Artwork: *Urban Energy*  
By: Kathleen Conover

Kathleen Conover's work has been shown at more than 100 exhibitions, and she has won numerous awards. In February 2008, she was a featured artist in *American Style Magazine*. To view more of her work, please visit her Website at <http://www.kathleenconover.com>

# INSTRUCTIONS FOR AUTHORS

## Organization of Manuscripts

Manuscripts in one of five different categories can be submitted for review and publication in *Prehospital and Disaster Medicine* (PDM): (1) Original Research; (2) Special Report; (3) Comprehensive Review; (4) Case Report; or (5) Brief Report. All manuscripts submitted for publication must include an abstract that summarizes the work. Other types of manuscripts must have the approval of the Editor before being submitted or may be invited by the Editor or a member of the Editorial Board. All Abstracts submitted by the Secretariat of a Congress will be edited by the Editorial Staff into the best English possible prior to publication. The characteristics specific to each of these categories are described briefly below:

1. **Original Research**—structured research that uses quantitative and/or qualitative data collection and processing methods to establish a hypothesis or prove a cause:effect relationship(s) is included in this category. The manuscript must be structured as follows:

**Abstract**—Concise summary in the following format (*not to exceed 375 words*):

**Introduction:** need for the study.

**Hypothesis/Problem:** what was tested (experimental studies only) If qualitative, statement of problem addressed.

**Methods:** summary of methods used with subsections as appropriate (type of subjects, number of subjects, study design, statistical tests). If the work is qualitative, the types of instruments used and the scope and type of work must be described. *If a disaster is involved, the dates, type of event, location, scope, magnitude, and numbers of casualties and deaths must be summarized in tabular form for indexing.*

**Results:** summary of principal findings.

**Conclusion:** implications of findings.

**Introduction**—Provide justification for the effort with appropriate references annotated. If quantitative, the concluding sentence should define the hypothesis. If qualitative, the problem being addressed should be stated clearly.

**Methods**—Descriptive to a degree that other investigators would be able to reproduce the study. Statistical methods used must be annotated. Approval by an Institutional Review Committee **must** be included when appropriate.

**Results**—Results must be written in text and may be accompanied by tables and figures. The text **must** explain all data included in tables and figures, but should not be redundant. All direct results from the study must appear in this section. *No discussion of the results may be included.*

**Discussion**—The Discussion should provide an interpretation of the Results in terms of meaning and application. Results should not be repeated. Computations or extrapolations that may help explain the results may be provided. Limitations of the study should be defined and suggestions for future research should be included. References that support or negate explanations provided are appropriate.

**Conclusions**—The findings in terms of implications for the practice of prehospital, emergency, and/or disaster medicine should be summarized in a few sentences.

2. **Special Report**—Describes some aspect of our science or activities that provide information necessary for the progression of the science. The *Introduction* should highlight the problem being addressed and the reasons that it needs to be addressed. Sections of the report should be subtitled. The presentation should include citations as to the sources of the material and should be followed by a *Discussion* that includes the significance of the report in terms of the science. The manuscript should be finished with the *Conclusions* reached.
3. **Comprehensive Review**—A review of the literature to be used to clarify areas in which there seems to be disagreement. Comprehensive Reviews seek to establish the evidence-base for the area being addressed. The format used should be identical to that described for Special Reports.
4. **Case Report**—Uses one or more cases of specific patients or events/responses to highlight a current aspect of medical care or of a phenomenon. Case Reports also may have value in the development of definitive research projects by the same or other investigators. The *Introduction* should describe the reasons for the report. The actual *Case Report(s)* should be described in the next section, and like the above, the *Discussion* should describe the significance of the reports including a comprehensive review of the pertinent literature. The *Conclusion* should be similar to the format noted above.
5. **Brief Report**—A short report that may predict a trend, but the work does not meet all of the criteria required for Original Research. Preliminary reports also are included in this category. The format used should be identical to that used for the Original Research described above.

## General Submission Requirements

**Manuscripts**—Manuscripts are preferred in electronic form (disk, CD, or e-mail) with a cover letter, cover page, and manuscript. Electronic format: the cover letter, cover page, and manuscript should be sent as separate electronic files on one diskette or CD in Microsoft Word. Please label the diskette or CD and include the paper's title and the primary author's surname. Electronic files may be submitted to our office via e-mail to the following address: ds5@medicine.wisc.edu or pdm@medicine.wisc.edu. If the manuscript is submitted by mail, please include paper version of the cover letter, cover page, and one paper copy of the manuscript to accompany the disk. If submitting the article in paper form only, please send one cover letter, the cover page, and manuscript. If electronic format is not available, we will accept manuscripts in paper form.

**Previous Publication**—A manuscript will be considered only if it has not been published previously and is not under consideration for publication elsewhere.

**Copyrights**—After acceptance for publication, the copyright to the manuscript, including all tables and figures, rests with *Prehospital and Disaster Medicine*.

**Cover Letter**—Each manuscript should be accompanied by a signed cover letter from the primary author who attests to the original nature of the material, that the paper has not been published elsewhere, is not under consideration by any other publication, and that the authors agree to transfer copyright to *Prehospital and Disaster Medicine* if accepted for publication. The institution(s) in which the work was performed, the sponsoring institution(s), and the respective departments must be annotated. If the work was supported all or in part by grants or endowments, the granting institution(s) should be indicated. If the paper has been, or is to be presented in a forum orally or as a poster, indicate the title of the forum, sponsoring institution, and the date of presentation. Specify the name of the author with whom any correspondence should be directed, and, correspondence street address, telephone number, facsimile (fax) number, and e-mail address if appropriate.

**Cover Page**—Include a cover page that includes the title of the paper, first names, middle initials, last names, and highest academic degrees of all authors. Reiterate from the cover letter the name of the author with whom any correspondence should be directed and the street address, telephone number, facsimile (fax) number, and e-mail address if appropriate. Do not indicate author names or institutions anywhere in the manuscript other than on the cover page.

**Language**—All manuscripts must be submitted in English. Also, do not use *I*, *We*, or *Our* when describing the researchers. The fact that the research was conducted by the authors is implicit.

Abbreviations for groups of words may be used only for unusually cumbersome titles or for commonly accepted abbreviations. Whenever such abbreviations are used, they must be annotated with the initial mention of words within the manuscript followed by the abbreviation in parentheses. In addition, list eight or more keywords or phrases in alphabetical order separated by semicolons to facilitate indexing or electronic searches.

**Paper, Margins, and Type Style**—Manuscripts should be submitted on plain white paper, letter size up to A4, 8.27" by 11.69" (210 mm by 297 mm). *Do not right justify the margins.* Use standard type styles. Double space all text.

**Generic Names**—Whenever possible, use generic names. Brand names may be indicated parenthetically and the name and location of the manufacturer must be provided in parentheses followed by a generic description of the medication, drug, product, or equipment.

**References**—References **must** be cited in the sequential order in which they appear in the text. All references should be parenthetically cited by full-sized Arabic numbers in the text, tables, and legends for illustrations. Repeated use of a reference must bear the number of the first time this reference is used. Titles of journals referenced must be annotated using standard *Index Medicus* abbreviations and must be italicized. Unpublished data or personal communications should be indicated in parentheses directly following the reference and should include the dates of such correspondence (Personal Communication, Safar P, October 1989). The following format for references **must** be used:

*Journals*—White SJ, Hamilton WA, Veronesi JF: Comparison of field techniques used to pressure infuse intravenous fluids. *Prehosp Disast Med* 1991;6:429–434.

*Books*—Schwartz GR, Safar P, Stone JH, *et al* (eds), *Principles and Practice of Emergency Medicine*. 2d ed. Philadelphia: WB Saunders Co., 1985, pp 1198–1202.

*Chapters*—Lindberg R: Pathology of Head Injuries. In: Cowley RA, Trump BF (eds), *Pathophysiology of Shock*. Baltimore: Williams and Wilkins, 1982, pp 588–592.

*Website*—International Crisis Group: Impact of the Bali bombings. Available at [http://www.crisisweb.org/projects/asia/indonesia/reports/A400804\\_24102002.pdf](http://www.crisisweb.org/projects/asia/indonesia/reports/A400804_24102002.pdf). Accessed 09 June 2003.

**Tables**—Tables must be numbered as referenced in the text and each typed on a separate page, placed at the end of the manuscript. Do not include tables in the body of the text.

**Figures**—Illustrative materials **must** be of professional quality, should be submitted as large as possible, up to 8.27" by 11.69" (A4 210 mm by 297 mm), and be **at least 600 dpi resolution**. Color illustrations must be discussed with the editor. All graphs and charts must be saved in a JPG/TIFF format and are to include a legend. Photos also can be mailed to the PDM office. They must be high gloss and 600 dpt.

**Permissions**—Illustrations or tables from other publications must be accompanied by written permission from the author and publishers of the document in which they originally appeared.

**Publication Schedule**—Manuscripts should be published within 4 to 6 months of acceptance and receipt of revisions.

#### Additional Information

Contact Marvin L. Birnbaum, MD, PhD, Editor, *Prehospital and Disaster Medicine*, 3330 University Avenue, Madison, WI 53705 USA, (+1) (608) 263-9641; E-mail: [mlb@medicine.wisc.edu](mailto:mlb@medicine.wisc.edu).

**Visit our Website:** <http://pdm.medicine.wisc.edu>.

**EDITOR-IN-CHIEF****Marvin L. Birnbaum, MD, PhD**University of Wisconsin-Madison  
Madison, Wisconsin USA**ASSOCIATE EDITORS****Wolfgang Dick, Dr Med**  
Johannes Gutenberg Universität  
Mainz, Germany**P. Gregg Greenough, MD, MPH**Director of Research, Harvard  
Humanitarian Initiative  
Boston, Massachusetts USA**Kimball Maull, MD**Carraway Injury Control  
Institute  
Birmingham, Alabama USA**Steven Rottman, MD**University of California-  
Los Angeles  
Los Angeles, California USA**Samuel Stratton, MD**University of California-Irvine  
Los Angeles, California USA**SECTION EDITORS***International Health Law  
and Ethics***Michael Hoffman, JD**  
Washington, DC USA**PAST EDITORS****Peter Safar, MD**  
Deceased  
(JWAEDM 1981-1985)**R. Adams Cowley, MD**Deceased  
(JWAEDM 1986-1987)**CONSULTING EDITORS****David A. Bradt, MD, MPH**  
Royal Melbourne Hospital  
Melbourne, Australia**S. William A. Gunn, MD**European Centre for Disaster  
Medicine  
Geneva, Switzerland**Ronald Stewart, MD**Victoria Hospital  
Halifax, Nova Scotia Canada**EDITORIAL BOARD****Carol Amaratunga, PhD**Justice Institute of British  
Columbia  
New Westminster, British  
Columbia Canada**Ahmed Ammar, MD**King Fahd Medical Complex  
Riyadh, Saudi Arabia**Paul Arbon, PhD**School of Nursing and  
Midwifery  
Flinders University  
Adelaide, South Australia**Prof. Frank Archer, MD**Monash University  
Melbourne, Australia**Jeffrey Arnold, MD**Department of Emergency  
Medicine  
Santa Clara Valley Medical  
Center  
San Jose, California USA**Col. Dr. Yaron Bar-Dayam,  
MD, MHA**Israeli Defense Forces Home  
Front Command  
Or-Yehuda, Israel**Joost Bierens, MD, PhD**VU Medical Center  
Amsterdam, The Netherlands**Tareg Bey, MD**Department of Emergency  
Medicine  
University of California, Irvine  
Orange, California USA**Richard A. Bissell, PhD**University of Maryland-  
Baltimore County  
Baltimore, Maryland USA**Fredrick M. Burkle, MD,  
MPH**Johns A. Burns School of  
Medicine  
Harvard Humanitarian  
Initiative  
Honolulu, Hawaii USA**Felipe Cruz-Vega, MD**Social Security  
Mexico City, Mexico**Claude de Ville de Goyet,  
MD**Consultant WHO/PAHO  
Washington, DC USA**Robert A. De Lorenzo, MD,  
MSM, FACEP**Medical Corps  
United States Army  
San Antonio, Texas USA**Judith Fisher, MD**Consultant, Disaster Medicine  
Pleasant Hill, California USA**Erik S. Gaull**George Washington University  
Washington, DC USA**Michael Gunderson**President, Integral Performance  
Solutions  
Lakeland, Florida USA**Keith Holtermann, MD**George Washington University  
Washington, DC USA**Mark S. Johnson, MPA**Retired Chief of EMS  
Juneau, Alaska USA**Mark Keim, MD**Centers for Disease Control  
and Prevention  
Atlanta, Georgia USA**Per Kulling, MD**National Board of Health and  
Welfare  
Stockholm, Sweden**Todd J. LeDuc, EMT-P**Deputy Fire Chief  
Broward Sheriff Fire Rescue  
Ft. Lauderdale, Florida USA**Gloria Leon, PhD**Professor of Psychology  
University of Minnesota  
Minneapolis, Minnesota USA**Graeme McColl**Ministry of Health  
New Zealand**Andrew Milsten, MD, MS,  
FACEP**University of Maryland  
Emergency Medicine  
Baltimore, Maryland USA**Jerry Overton**Executive Director,  
Richmond Ambulance  
Authority,  
Richmond, Virginia USA**Paul Paris, MD**Center for Emergency  
Medicine  
University of Pittsburgh  
Pittsburgh, Pennsylvania USA**Lynda Redwood-Campbell,  
MD, MPH**Department of Family  
Medicine  
McMaster University  
Hamilton, Ontario Canada**Edward Ricci, PhD**University of Pittsburgh  
Pittsburgh, Pennsylvania USA**Leonid B. Roshal, MD**Institute of Pediatrics  
Academy of Medical Sciences  
Moscow, Russia**Don Schramm**University of Wisconsin-Madison  
Madison, Wisconsin USA**Geert Seynaeve, MD**

Brussels, Belgium

**Knut Ole Sundnes, MD**Baerum Hospital  
Oslo, Norway**Takashi Ukai, MD**Hyogo Emergency Medical  
Center  
Hyogo, Japan**Michael Van Rooyen, MD**Associate Professor, Harvard  
Medical School, Brigham  
and Women's Hospital  
Boston, Massachusetts USA**Darren Walter**University Hospital of South  
Manchester  
Manchester, UK