

AMERICAN ANTIQUITY

VOLUME 63 NUMBER 2 APRIL 1998



SAA


SOCIETY FOR AMERICAN ARCHAEOLOGY

EDITORIAL STAFF OF AMERICAN ANTIQUITY

Editor: LYNNE GOLDSTEIN, Department of Anthropology, Michigan State University, 354 Baker Hall, East Lansing, MI 48824 Telephone: (517) 353-4704 Email: aaq@csd.uwm.edu

Managing Editor: JANET WALKER, Society for American Archaeology, 900 Second Street, N.E., Suite 12, Washington, DC 20002-3557 Telephone: (202) 789-8200 Email: janet_walker@saa.org

Associate Editor for Reviews and Book Notes: CARLA SINOPOLI, Museum of Anthropology, University of Michigan, 1109 Geddes Avenue, Ann Arbor, MI 48109-1079 Telephone: (313) 764-0484 Email: sinopoli@umich.edu

Coordinator for Current Research: TERESITA MAJEWSKI, Statistical Research, P.O. Box 31865, Tucson, AZ 85751 Telephone: (520) 721-4309 Fax: (520) 298-7044 Email: sriarc@aol.com

BOARD OF DIRECTORS OF THE SOCIETY FOR AMERICAN ARCHAEOLOGY

Officers

President: VINCAS STEPONAITIS, Research Labs of Anthropology, University of North Carolina, Chapel Hill, NC 27599-3120

Secretary: LYNNE SEBASTIAN, State Historic Preservation Division, 228 East Palace Avenue, Santa Fe, NM 87501

Treasurer: ROBERT L. BETTINGER, Department of Anthropology, University of California, Box 500, Davis CA 95617

Treasurer-elect: JEFFREY H. ALTSCHUL, Statistical Research, P.O. Box 31865, Tucson, AZ 85751-1865

Board Members-at-Large

C. MELVIN AIKENS, Department of Anthropology, University of Oregon, Eugene, OR 97403

MARGARET C. NELSON, Department of Anthropology, Arizona State University, Tempe, AZ 85287

DEBORAH M. PEARSALL, Department of Anthropology, University of Missouri, 107 Swallow Hall, Columbia, MO 65211

DONNA J. SEIFERT, John Milner Associates, 5250 Cherokee Avenue, Alexandria, VA 22312

GEORGE S. SMITH, Southeast Archeological Center, National Park Service, 2035 East Paul Dirac Drive, Suite 120, Box 7, Tallahassee, FL 32310

BONNIE W. STYLES, Illinois State Museum, 1011 East Ash Street, Springfield, IL 62703

Ex-officio Executive Board Member

Executive Director: TOBI A. BRIMSEK, Society for American Archaeology, 900 Second Street, N.E., Suite 12, Washington, DC 20002-3557

American Antiquity (ISSN 0002-7316) is published quarterly in January, April, July, and October by the Society for American Archaeology, 900 Second Street, N.E., Suite 12, Washington, DC 20002-3557. The journal is one of two offered as a benefit of individual membership. Subscription rates are \$175.00 for institutions in Australia, Baharain, Bermuda, Canada, Cyprus, Hong Kong, Israel, Japan, Korea, Kuwait, Libya, New Caledonia, New Zealand, Qatar, Saudi Arabia, Sultanate of Oman, Singapore, Taiwan, Thailand, United States, or Western Europe; \$50 for members in these countries who already receive the society's other journal as a membership benefit; and \$28.00 for members in Latin America or any other country not listed above. To subscribe, change an address, or order back issues, please write to the Society for American Archaeology at the address below. Prepayment is required, payable in U.S. funds. *American Antiquity* is not available for exchange. Claims for nonreceipt and for damaged copies must be made within 90 days (U.S.) or 180 days (non-U.S.) of the publication date for free replacement. Non-U.S. deliveries cannot be guaranteed; non-U.S. members and subscribers may purchase replacement copies at a 20% discount. *American Antiquity* is typeset by Oakland Street Publishing, Arlington, Virginia, and printed by Allen Press, Lawrence, Kansas.

Periodicals postage paid at Washington, D.C., and additional mailing offices. POSTMASTER: Send address changes to *American Antiquity*, c/o Society for American Archaeology, 900 Second Street, N.E., Suite 12, Washington, DC 20002-3557.

AMERICAN ANTIQUITY™

VOLUME 63 NUMBER 2 APRIL 1998

ARTICLES

- 199 Daily Practice and Material Culture in Pluralistic Social Settings: An Archaeological Study of Culture Change and Persistence from Fort Ross, California
Kent G. Lightfoot, Antoinette Martinez, and Ann M. Schiff
- 223 Rockshelters and Hunter-Gatherer Adaptation to the Pleistocene/Holocene Transition
John A. Walthall
- 239 Seriation, Superposition, and Interdigitation: A History of Americanist Graphic Depictions of Culture Change
R. Lee Lyman, Steve Wolverton, and Michael J. O'Brien

REPORTS

- 263 Prehistoric Human Use of Fire, the Eastern Agricultural Complex, and Appalachian Oak-Chestnut Forests: Paleoecology of Cliff Palace Pond, Kentucky
Paul A. Delcourt, Hazel R. Delcourt, Cecil R. Ison, William E. Sharp, and Kristen J. Gremillion
- 279 *Cucurbita pepo* from King Coulee, Southeastern Minnesota
Bradley E. Perkl
- 289 Sociopolitical Meaning of Faunal Remains from Baker Village
Bryan Scott Hockett
- 303 Weighing vs. Counting: Measurement Reliability and the California School of Midden Analysis
Roger D. Mason, Mark L. Peterson, and Joseph A. Tiffany

COMMENTS

- 325 Hierarchy and Heterarchy in the American Southwest: A Comment on McGuire and Saitta
Alison E. Rautman
- 334 Dialectics, Heterarchy, and Western Pueblo Social Organization
Dean J. Saitta and Randall H. McGuire

REVIEWS AND BOOK NOTES

Reviews

- 337 People Who Lived in Big Houses: Archaeological Perspectives on Large Domestic Structures, edited by Gary Coupland and E. B. Banning
Ricky R. Lightfoot

American Antiquity is abstracted or indexed in *Abstracts in Anthropology*; *Academic Search*; *America*; *Arts and Humanities Citation Index®*; *History and Life*; *Anthropological Literature*; *Art Index*; *ASTIS Bibliography*; *ASTIS Current Awareness Bulletin*; *Current Contents®/Arts and Humanities*; *Book Review Index*; *Ceramic Abstracts*; *Ethnoarts Index*; *Expanded Academic Index*; *GeoRef*; *Hispanic American Periodicals Index*; *Historical Abstracts*; *Humanities Index*; *International Bibliography of Social and Cultural Anthropology*; *International Bibliography of the Social Sciences*; *Middle East, Abstracts and Index*; *Social Sciences Citation Index®*; and *SportSearch*.

Copyright © 1998 by the Society for American Archaeology. All Rights Reserved.

ISSN 0002-7316

- 338 *Material Harm: Archaeological Studies of War and Violence*, edited by John Carman
Elsa M. Redmond
- 339 *Emergence and Change in Early Urban Societies*, edited by Linda Manzanilla
Susan Toby Evans
- 340 *The Lapita Peoples: Ancestors of the Oceanic World*, by Patrick Vinton Kirch
Chris Gosden
- 341 *Cahokia: Domination and Ideology in the Mississippian World*, edited by Timothy R. Pauketat and Thomas E. Emerson
Amy L. Ollendorf
- 343 *Mounds, Embankments, and Ceremonialism in the Midsouth*, edited by Robert C. Mainfort and Richard Walling
Gary H. Dunham
- 344 *The Managed Mosaic: Ancient Maya Agriculture and Resource Use*, edited by Scott L. Fedick
Geoffrey E. Brasswell
- 345 *Historical Archaeology and the Study of American Culture*, edited by Lu Ann De Cunzo and Bernard L. Herman
Christopher Ohm Clement
- 346 *Indians and Anthropologists: Vine Deloria, Jr., and the Critique of Anthropology*, edited by Thomas Biolsi and Larry J. Zimmerman
Kurt Dongoske
- 347 *The Archaeology of Ethnicity: Constructing Identities in the Past and Present*, by Siân Jones
Peter S. Wells
- 348 *Economic Analysis beyond the Local System*, edited by Richard E. Blanton, Peter N. Peregrine, Deborah Winslow, and Thomas D. Hall
Edward M. Schortman
- 349 *Women in Human Evolution*, edited by Lori D. Hager
Madonna L. Moss
- 351 *Settlement Ecology: The Social and Spatial Organization of Kofyar Agriculture*, by Glenn Davis Stone
Philip C. Burnham
- 352 *Mississippian Political Economy*, by Jon Muller
David G. Anderson
- 353 *The Marge Site: Late Archaic and Emergent Mississippian Occupations in the Palmer Creek Locality*, by Andrew Fortier, with contributions by Mary Simon, Thomas E. Berres, and Joseph S. Phillippe
Brad Logan
- 355 *Southwestern Minnesota Archaeology: 12,000 Years in the Prairie Lake Region*, by Scott F. Anfinson
Nancy J. Hodgson
- 356 *Glen Canyon Revisited*, by Phil R. Geib, J. Richard Ambler, J. Michael Bremer, and Peter Bungart
Carla Van West
- 356 *Ceramic Commodities and Common Containers: Production and Distribution of White Mountain Red Wares in the Grasshopper Region, Arizona*, by Daniela Triadan
H. Wolcott Toll
- 357 *Time, Culture and Identity: An Interpretive Archaeology*, by Julian Thomas
Michael Fotiadis
- 358 *Neolithic Houses in Northwest Europe and Beyond: Neolithic Studies Group Seminar Papers 1*, edited by Timothy Darville and Julian Thomas
D. Blair Gibson

- 359 The Archaeology of Late Bronze Age Cypriot Society, by A. Bernard Knapp
Thomas F. Strasser
- 360 The Hunter's Vision: The Prehistoric Art of Zimbabwe, by Peter Garlake
Whitney Davis

Book Notes

- 361 Ships and Shipwrecks of the Americas: A History Based on Underwater Archaeology, edited by George F. Bass
John A. Gifford
- 362 A History of Dogs in the Early Americas, by Marion Schwartz
Jordan E. Kerber
- 362 Computing and Statistics in Osteoarchaeology, edited by Sue Anderson and Katherine Boyle
David Rapson
- 363 The Pithouses of Keatley Creek, by Brian Hayden
Mary B. Collins
- 364 Living on the Boott: Historical Archaeology at the Boott Mills Boardinghouses, Lowell Massachusetts, by Stephen A. Mrozowski, Grace H. Ziesing, and Mary C. Beaudry
Amy L. Young
- 364 Carolina's Historical Landscapes: Archaeological Perspectives, edited by Linda F. Stine, Martha Zierden, Lesley M. Drucker, and Christopher Judge
Jeffrey L. Holland
- 365 Ancient Cholistan: Archaeology and Architecture, by Mohammed Rafique Mughal
Henry T. Wright

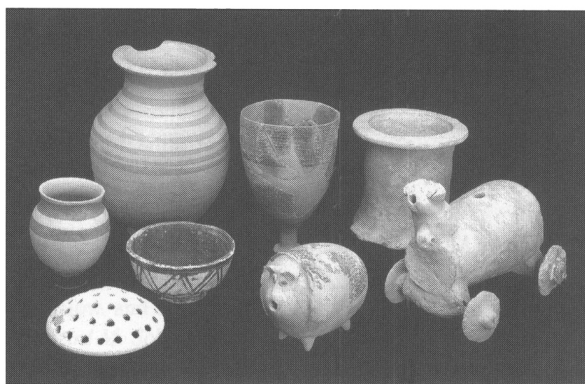
The Archaeology of City-States

Cross-Cultural Approaches

Edited by Deborah L. Nichols & Thomas H. Charlton

Contending that the city-state was a significant cross-cultural regularity that developed among geographically and historically separated civilizations, the editors bring together the work of fifteen leading scholars who use the archaeological record to explore the emergence, structure, and function of city-states in Mesopotamia, Egypt, the Indus Valley, China, Greece, Okinawa, the Maya Lowlands, central Mexico, Peruvian coast, and the Andes.

37 b&w illus., 50 maps • 344 pp.
Hardcover \$60.00 • Paperback \$34.95
Smithsonian Series in Archaeological Inquiry



Pottery in the Making

Ceramic Traditions

Edited by Ian Freestone & David Gaimster

Generously illustrated, this book explores more than twelve thousand years of ceramic production throughout the world from the perspectives of archaeology, anthropology, art history, and science. Analyzing a broad range of samples, twenty-six scholars focus on more than thirty pottery traditions—including those of ancient Egypt, Mesopotamia, prehistoric Japan, pre-Hispanic Peru, classical Greece, Ming China, medieval and Renaissance Europe, and contemporary Africa and India.

42 color, 170 b&w photographs, 30 line drawings, 5 maps • 240 pp.
Paperback \$35.00

The Archaeology of Social Boundaries

Edited by Miriam T. Stark

Fourteen contributors examine an array of media—from ceramics and personal ornaments to architecture and site structure—in small-scale societies and apply methods from both sides of the Atlantic to explore how technical choices made in the creation of everyday objects can both reflect and define social boundaries.

19 b&w photographs, 30 line illus., 25 maps • 432 pp.
Hardcover \$45.00 • Smithsonian Series in Archaeological Inquiry

Bones in the Basement

Postmortem Racism in Nineteenth-Century Medical Training

Edited by Robert L. Blakely &

Judith M. Harrington

In 1989, a cache of some 9800 dissected and amputated human bones—more than 75 percent of them African American—was found in the basement floor of the Medical College of Georgia. Re-creating the social context and medical practices that led to the bones' clandestine disposal prior to 1910, the contributors to this book take a broad approach to the study of a single, well-preserved site. They reveal a nineteenth-century legacy of postmortem racism and shed light on the lives of those who have had scant presence in the historical record.

29 b&w illus. • 382 pp. • Hardcover \$45.00

Anthropology Explored

The Best of Smithsonian *AnthroNotes*

Edited by Ruth Osterweis Selig & Marilyn R. London

Foreword by David W. McCurdy

Drawings by Robert L. Humphrey

Charting the richness and breadth of the anthropological endeavor, twenty-nine clear, lively essays survey a wide range of methods and explore such fundamental topics as the emergence of humans from other primates, archaeologists' understanding of early and more recent settlements and the diversity of present and past cultures.

42 b&w line illus. • 360 pp. • Hardcover \$35.00 • Paperback \$17.95

AVAILABLE AT BOOKSTORES OR FROM

Smithsonian Institution Press

PO Box 960 • Herndon, VA 20172 • 800/782-4612

Discover the Newest in Archaeology

FROM ACADEMIC PRESS

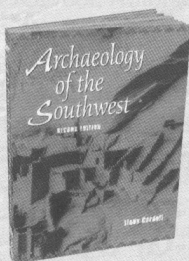


Archaeology of the Southwest

SECOND EDITION

Linda Cordell

University Museum, University of
Colorado, Boulder



"Dr. Cordell has accomplished a major task in pulling together information on the history and development of modern issues and themes of Southwest archaeology. No other area of North America has accumulated more published archaeological research and generated more debate than the American Southwest. Her synthesis provides an excellent perspective for students and scholars alike."

—HARRY J. SHAFER

Texas A&M University, College Station

"This volume is a comprehensive, highly readable synthesis of contemporary archaeological practice in the American Southwest. The pace and content of new research is admirably captured in this fine update of Cordell's now classic overview."

—BARBARA MILLS

University of Arizona, Tucson

KEY FEATURES

- ◆ Offers a readable and accurate representation of current debates and research in the American Southwest
- ◆ Challenges readers to integrate the structure and meaning of various broad regional trends that preceded the European conquest
- ◆ Addresses curricular cultural diversity requirements
- ◆ Contains new maps, line drawings, and photos

Paperback: \$39.95/ISBN: 0-12-188226-8

Casebound: \$85.00/ISBN: 0-12-188225-X

November 1997, 522 pp.

Order from your local bookseller or directly from:



Academic Press

Order Fulfillment Dept. DM27103

6277 Sea Harbor Drive

Orlando, FL 32887

In the U.S. and Canada

CALL TOLL FREE: 1-800-321-5068 www.academicpress.com

FAX: 1-800-874-6418

E-MAIL: ap@acad.com



Prices in U.S. dollars are subject to change without notice.

©1998 by Academic Press. All Rights Reserved. KLS/MEH/SBE—01048 2/98

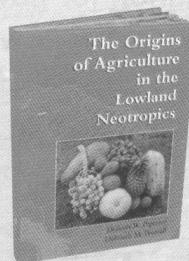
The Origins of Agriculture in the Lowland Neotropics

Dolores Piperno

Smithsonian Tropical Research Institute, Balboa, Panama

Deborah M. Pearsall

University of Missouri, Columbia



"The authors are active, well-known investigators with decades-long commitment to tropical forest agriculture and archaeology in Latin America. Their book is essential reading for everyone concerned with agricultural origins and the Neotropics."

—PATTY JO WATSON

Edward Mallinckrodt Distinguished University Professor of
Anthropology, Washington University, St. Louis, Missouri

"Our understanding of the origins of agriculture in the tropical lowlands has traditionally been limited by narrow theoretical and methodological approaches. This provocative book presents an up-to-date review of the direct and indirect evidence for early cultigens, a history of ideas, and the intense contemporary debates on the origins and development of agriculture in the tropical regions of the Americas. Piperno and Pearsall propose a bold theoretical perspective on the priority and importance of early crop domestication by the inhabitants of the neotropics."

—CLARK L. ERICKSON

University of Pennsylvania, Philadelphia

KEY FEATURES

- ◆ Argues that tropical forest food production emerged at approximately the same time as that in the Near East and is earlier than currently demonstrated in highland Mexico and Peru
- ◆ Contends that the lowland tropics witnessed climatic and vegetational changes between 11,000 BP and 10,000 BP, no less profound than those experienced at higher latitudes
- ◆ Covers the development of slash and burn (or swidden) cultivation
- ◆ Focuses on low and lower mid-elevations

March 1998, c. 432 pp., \$99.00/ISBN: 0-12-557180-1

Complete Archaeology System

GPS/Traverse/GIS/Digital Image

When GPS is available (open sky), you can use GPS for position determination. There are three levels of GPS accuracy available to meet the needs of your Job.

When GPS is not available, such as in heavy canopy or inside a cave, you can use CMT's Traverse function. Measure and enter distance by tape, direction by compass and slope by level.

A 4-layer GIS database (Feature List, Feature, Attribute and Value) can be used to establish a description of each Feature at your site.

Tie digital photos or video footage to a specific Feature at a specific location for powerful presentations and accurate depictions.

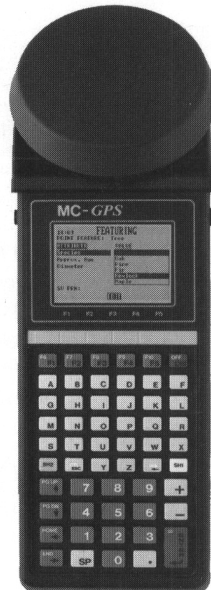
PC5L-GPS-HP

High Precision



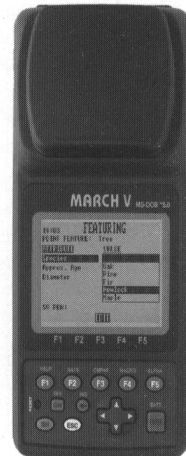
MC-GPS

Proven Reliability



MARCH

Easy to Use



Carrier Phase 5cm

10 - 30 cm

10 - 30 cm

C/A Code 30-60 cm

1-5 meter

1-5 meter

CMT

Corvallis Microtechnology, Inc.
www.cmtinc.com

Phone: (541) 752-5456
Fax: (541) 752-4117