

# INFECTION CONTROL & HOSPITAL EPIDEMIOLOGY

VOLUME 30, NUMBER 5

MAY 2009

## ORIGINAL ARTICLES

- 409 Incidence of Microperforation for Surgical Gloves Depends on Duration of Wear** • Lars Ivo Partecke, MD; Anna-Maria Goerdts, MD; Inga Langner, MD; Bernd Jaeger, MSc, PhD; Ojan Assadian, MD, DTMH; Claus-Dieter Heidecke, MD, PhD; Axel Kramer, MD, PhD; Nils-Olaf Huebner, MD
- 415 A Qualitative Exploration of Reasons for Poor Hand Hygiene Among Hospital Workers: Lack of Positive Role Models and of Convincing Evidence That Hand Hygiene Prevents Cross-Infection** • V. Erasmus, MSc; W. Brouwer, MSc; E. F. van Beeck, MD, PhD; A. Oenema, PhD; T. J. Daha; J. H. Richardus, MD, PhD; M. C. Vos, MD, PhD; J. Brug, PhD
- 420 Surgical Hand Antisepsis With Alcohol-Based Hand Rub: Comparison of Effectiveness After 1.5 and 3 Minutes of Application** • Walter P. Weber, MD; Stefan Reck, MD; Uschi Neff, RN; Ramon Saccilotto, MD; Marc Dangel, RN, MPH; Manfred L. Rotter, MD; Reno Frei, MD; Daniel Oertli, MD, FACS; Walter R. Marti, MD, FACS; Andreas F. Widmer, MD, MS
- 427 Impact of Finger Rings on Transmission of Bacteria During Hand Contact** • Mette Fagernes, RN, Cand.san; Egil Lingaas, PhD
- 433 Accounting for Incomplete Postdischarge Follow-Up During Surveillance of Surgical Site Infection by Use of the National Nosocomial Infections Surveillance System's Risk Index** • Fernando Martín Biscione, MD, MSc; Renato Camargos Couto, MD, PhD; Tânia M. G. Pedrosa, MD, MSc
- 440 Risk Factors for Gram-Negative Bacterial Surgical Site Infection: Do Allergies to Antibiotics Increase Risk?** • Jane V. Trinh, MD; Luke F. Chen, MBBS; Daniel J. Sexton, MD; Deverick J. Anderson, MD
- 447 Success of an Infection Control Program to Reduce the Spread of Carbapenem-Resistant *Klebsiella pneumoniae*** • Sandeep Kochar, MD; Timothy Sheard, MA; Roopali Sharma, PharmD; Alan Hui, PharmD; Elaine Tolentino, MS; George Allen, PhD; David Landman, MD; Simona Bratu, MD; Michael Augenbraun, MD; John Quale, MD
- 453 Are There Differences in Hospital Cost Between Patients With Nosocomial Methicillin-Resistant *Staphylococcus aureus* Bloodstream Infection and Those With Methicillin-Susceptible *S. aureus* Bloodstream Infection?** • Debby Ben-David, MD; Ilya Novikov, PhD; Leonard A. Mermel, DO, ScM
- 461 Pseudo-Outbreak of *Legionella pneumophila* Serogroup 8 Infection Associated With a Contaminated Ice Machine in a Bronchoscopy Suite** • A. N. Schuetz, MD, MPH; R. L. Hughes, MD; R. M. Howard, BSN; T. C. Williams, MMSc; F. S. Nolte, PhD; D. Jackson, BS; B. S. Ribner, MD, MPH
- 467 Epidemiology and Control of Pertussis Outbreaks in a Tertiary Care Center and the Resource Consumption Associated With These Outbreaks** • Surbhi Leekha, MBBS, MPH; Rodney L. Thompson, MD; Priya Sampathkumar, MD
- 474 A Statewide System for Improving Influenza Vaccination Rates in Hospital Employees** • Philip M. Polgreen, MD, MPH; Linnea A. Polgreen, PhD; Thomas Evans, MD; Charles Helms, MD, PhD



THE OFFICIAL JOURNAL OF THE SOCIETY FOR HEALTHCARE EPIDEMIOLOGY OF AMERICA

CONTENTS CONTINUED INSIDE

Enhanced Efficacy

**NOW** you hold <sup>more</sup> ~~the~~ power  
to fight for your patients



**V-Link** with **VitalShield**  
Luer Activated Device Protective Coating

The first antimicrobial IV connector

*Now* kills at least 99.99% of 6 common  
pathogens known to cause catheter-related  
bloodstream infections (CR-BSIs)<sup>1\*</sup>

\*These in vitro test results of typical devices have not been shown  
to correlate with a reduction in infections.

To learn more about the new V-Link device or any of our other products,  
contact your Baxter representative or the Baxter Product Information  
Center at 1-800-933-0303, or visit [www.baxter.com](http://www.baxter.com).

The antimicrobial agent is not intended to be used as a treatment for existing infections.  
Rx only.  
For safe and proper use of this device, please refer to the complete instructions for use.

Options at work.



MEDICATION DELIVERY

**Baxter**

<sup>1</sup>Data on file, Baxter Healthcare Corporation.

Baxter, Committed to a Safer Healthcare Environment, V-Link, and VitalShield are trademarks of Baxter International Inc.  
Baxter Healthcare Corporation, Route 120 and Wilson Road, Round Lake, IL 60073 [www.baxter.com](http://www.baxter.com) 213399 09/08

# INFECTION CONTROL & HOSPITAL EPIDEMIOLOGY

VOLUME 30, NUMBER 5

MAY 2009

CONTENTS CONTINUED FROM COVER

## CONCISE COMMUNICATIONS

- 479 **Role of Matching in Case-Control Studies of Antimicrobial Resistance** • Elizabeth Cerceo, MD; Ebbing Lautenbach, MD, MPH, MSCE; Darren R. Linkin, MD, MSCE; Warren B. Bilker, PhD; Ingi Lee, MD, MSCE
- 484 **Vancomycin Use During Left Ventricular Assist Device Support** • Rachel F. Eyler, PharmD; Simona O. Butler, PharmD; Paul C. Walker, PharmD; Daryl D. DePestel, PharmD; Martinus T. Spoor, MD, MS; Francis D. Pagani, MD, PhD; Preeti N. Malani, MD, MSJ
- 487 **The Impact of Ertapenem Use on the Susceptibility of *Pseudomonas aeruginosa* to Imipenem: A Hospital Case Study** • Ana Lucia L. Lima, MD, PhD; Priscila R. Oliveira, MD; Adriana P. Paula, RN; Karine Dal-Paz, PharmD; Flavia Rossi, MD, PhD; Arnaldo V. Zumioti, MD, PhD
- 491 **Risk Factors for Fecal Colonization With Multiple Distinct Strains of *Escherichia coli* Among Long-Term Care Facility Residents** • Ebbing Lautenbach, MD, MPH, MSCE; Pam Tolomeo, MPH, CCRP; Nicole Black, CCRP; Joel N. Maslow, MD, PhD

## LETTERS TO THE EDITOR

- 494 **Replacement of Administration Sets Used to Administer Blood, Blood Products, or Lipid Emulsions for the Prevention of Central Line–Associated Bloodstream Infection** • Sonia Labeau, MNSc; Dominique Vandijck, PhD; Christelle Lizy, RN; Anne Piette, MD; Gerda Verschraegen, PhD; Dirk Vogelaers, PhD; Stijn Blot, PhD
- 495 **Trends in Rates of Herpes Zoster–Related Hospitalizations: Are They Real, Are They Costly, and Are They Linked to Varicella Vaccination?** • Rafael Harpaz, MD, MPH; Barbara P. Yawn, MD, MSPH
- 496 **Reply to Harpaz and Yawn** • Mitesh S. Patel, BS; Achamyelah Gebremariam, MS; Matthew M. Davis, MD, MAPP
- 497 **Why We Disagree With the Analysis of Wenzel et al.** • Barry M. Farr, MD, MSc; William R. Jarvis, MD
- 499 **Reply to Farr and Jarvis** • Richard P. Wenzel, MD, MSc; Gonzalo Bearman, MD, MPH; Michael B. Edmond, MD, MPH, MPA
- 500 **Oscar the Cat, Carbapenem-Resistant *Klebsiella pneumoniae*, and Attributable Mortality** • Silvio Daniel Pitlik, MD
- 501 **Colonization or Infection of the Urinary Tract: Do We Pay Attention?** • Nitin Bhanot, MD, MPH; Edward K. Chapnick, MD; Shobha Sharma, DO; Ceres Tiu, MD; Monica Ghitan, MD; Andrew G. Sahud, MD
- 502 **Investigation of Individuals Exposed to a Healthcare Worker with Cavitory Pulmonary Tuberculosis** • Ekachai Singhatiraj, MD; Rita Corona, MD; Kenneth Nugent, MD; Matthew Robinson, MD
- 504 **Management of Potential Laboratory Exposure to Avian Influenza (H5N1) Virus: Implications for Pandemic Planning** • Catherine Susan Marshall, MBBS; Kaylene Styles, BN; Gordon Abraham, PhD; Eugene Athan, MBBS

An Official Publication of the Society for Healthcare Epidemiology of America

## EDITOR

Suzanne F. Bradley, MD • Ann Arbor, MI

## DEPUTY EDITOR

Carol A. Kauffman, MD • Ann Arbor, MI

## SENIOR ASSOCIATE EDITORS

C. Glen Mayhall, MD • Galveston, TX  
Gina Pugliese, RN, MS • Chicago, IL  
William Schaffner, MD • Nashville, TN

## ASSOCIATE EDITORS

Ebbing Lautenbach, MD, MPH • Philadelphia, PA  
Preeti N. Malani, MD, MSJ • Ann Arbor, MI  
David Weber, MD, MPH • Chapel Hill, NC

## STATISTICS CONSULTANT

Rodney L. Dunn, MS • Ann Arbor, MI

## SECTION EDITOR FOR GUIDELINES, POSITION PAPERS, AND INVITED REVIEWS

Carol Chenoweth, MD • Ann Arbor, MI

## MANAGING EDITOR

Anne Marie McCormack • Chicago, IL

## PAST EDITORS

### *Infection Control*

Richard P. Wenzel, MD, 1980–1990 (vols. 1–11)

### *Infection Control and Hospital Epidemiology*

Richard P. Wenzel, MD, 1991–1992 (vols. 12 and 13)

Michael D. Decker, MD, 1993–2001 (vols. 14–22)

Barry M. Farr, MD, 2002–2004 (vols. 23–25)

William R. Jarvis, MD, 2005–2006 (vols. 26 and 27)

## EDITORIAL ADVISORY BOARD

Miriam Alter, PhD, MD • Atlanta, GA  
Anucha Apisarnthanarak, MD • Pratumthani, Thailand  
Lennox Archibald, MD, FRCP • Alachua, FL  
Hilary Babcock, MD • St. Louis, MO  
Elise M. Beltrami, MD, MPH • Decatur, GA  
David Birnbaum, PhD, MPH • Sidney, BC  
Christian Brun-Buisson, MD • Creteil, France  
John P. Burke, MD • Salt Lake City, UT  
David P. Calfee, MD, MS • New York, NY  
Yehuda Carmeli, MD, MPH • Tel Aviv, Israel  
Sara E. Cosgrove, MD, MS • Baltimore, MD  
Donald E. Craven, MD • Burlington, MA  
Burke A. Cunha, MD • Mineola, NY  
Erika D'Agata, MD, MPH • Boston, MA  
Patch Dellinger, MD • Seattle, WA  
Daniel Diekema, MD • Iowa City, IA  
Charles E. Edmiston, Jr., PhD • Milwaukee, WI  
Theodore C. Eickhoff, MD • Denver, CO  
Martin S. Favero, PhD • Irvine, CA  
Jon P. Furuno, PhD • Baltimore, MD  
Richard A. Garibaldi, MD • Farmington, CT  
Petra Gastmeier, MD • Hanover, Germany  
Dale N. Gerding, MD • Hines, IL  
Donald A. Goldmann, MD • Boston, MA  
Donna Haiduven, RN, PhD, CIC • Tampa, FL  
Anthony D. Harris, MD, MPH • Baltimore, MD  
David K. Henderson, MD • Bethesda, MD  
Loreen A. Herwaldt, MD • Iowa City, IA  
Peter N. R. Heseltine, MD • San Juan, CA  
Karen Hoffmann, RN, CIC, MS • Chapel Hill, NC  
Janine Jagger, MPH, PhD • Charlottesville, VA  
John A. Jernigan, MD, MS • Atlanta, GA  
James T. Lee, MD, PhD • St. Paul, MN  
L. Clifford McDonald, MD • Atlanta, GA

Allison McGeer, MD • Toronto, ON  
Leonard A. Mermel, DO, ScM • Providence, RI  
Robert R. Muder, MD • Pittsburgh, PA  
Carlene A. Muto, MD, MS • Pittsburgh, PA  
Joseph M. Mylotte, MD, CIC • Buffalo, NY  
David L. Paterson, MBBS, FRACP • Pittsburgh, PA  
Jan Evans Patterson, MD • San Antonio, TX  
Sindy M. Paul, MD • Yardley, PA  
David A. Pegues, MD • Los Angeles, CA  
Eli Perencevich, MD, MS • Baltimore, MD  
Michael A. Pfaller, MD • Iowa City, IA  
Didier Pittet, MD, MS • Geneva, Switzerland  
Gina Pugliese, RN, MS • Chicago, IL  
Isaam Raad, MD • Houston, TX  
Jordi Rello, MD, PhD • Tarragona, Spain  
Manfred L. Rotter, MD, DipBact • Vienna, Austria  
Henning Rüden, MD • Berlin, Germany  
William A. Rutala, PhD, MPH • Chapel Hill, NC  
Lisa Saiman, MD, MPH • New York, NY  
Sanjay Saint, MD, MPH • Ann Arbor, MI  
William E. Scheckler, MD • Madison, WI  
Lynne M. Sehulster, PhD • Atlanta, GA  
John A. Sellick, DO • Amherst, NY  
Kent Sepkowitz, MD • New York, NY  
Samir Shah, MD, MSCE • Philadelphia, PA  
Andrew E. Simor, MD • Toronto, ON  
Philip W. Smith, MD • Omaha, NE  
Denis W. Spelman, MD • Prahan, Victoria, Australia  
Jeffrey R. Starke, MD • Houston, TX  
Janet E. Stout, PhD • Pittsburgh, PA  
Clyde Thornsberry, PhD • Franklin, TN  
William Trick, MD • Chicago, IL  
Antoni Trilla, MD, PhD • Barcelona, Spain  
Robert A. Weinstein, MD • Chicago, IL  
Andreas Widmer, MD, MS • Basel, Switzerland  
Marcus Zervos, MD • Royal Oak, MI

*Infection Control and Hospital Epidemiology* (ISSN 0899-823X) is published monthly by the University of Chicago Press, 1427 E. 60th St., Chicago, IL 60637-2954 (<http://www.journals.uchicago.edu/ICHE/>). The editorial office is in Chicago, Illinois.

## Editorial Office

Communications should be addressed to the Editor, *Infection Control and Hospital Epidemiology*, 1427 E. 60th St., Chicago, IL 60637-2954; (e-mail: [iche@press.uchicago.edu](mailto:iche@press.uchicago.edu); telephone: 773-773-2298, fax: 773-753-4247). Contributors should consult the Information for Authors, which is available at the journal's Web site.

## Advertising

Please direct advertising inquiries to Journals Advertising, University of Chicago Press, 1427 E. 60th St., Chicago, IL 60637 (e-mail: [cbarhany@press.uchicago.edu](mailto:cbarhany@press.uchicago.edu); telephone: 773-702-8187; fax: 773-702-0172). Publication of an advertisement in *Infection Control and Hospital Epidemiology* does not imply endorsement of its claims by the Society for Healthcare Epidemiology of America, by the Editor, or by the University of Chicago. Correspondence regarding advertising should be addressed to the advertising office in Chicago.

## Permissions

Articles may be copied or otherwise reused without permission only to the extent permitted by Sections 107 and 108 of the US Copyright Law. Permission to copy articles for personal, internal, classroom, or library use may be obtained from the Copyright Clearance Center (<http://www.copyright.com>). For all other uses, such as copying for general distribution,

for advertising or promotional purposes, for creating new collective works, or for resale, please contact the Permissions Coordinator, Journals Division, University of Chicago Press, 1427 E. 60th St., Chicago, IL 60637 (e-mail: [journalpermissions@press.uchicago.edu](mailto:journalpermissions@press.uchicago.edu); fax: 773-834-3489). Articles in the public domain may be used without permission, but it is customary to contact the author.

## Subscriptions

Subscription rates for 2009 are \$171 for individuals and \$401 for institutions. Additional rates for non-US subscribers and reduced rates for fellows, residents, and students are available at <http://www.journals.uchicago.edu/ICHE>. Subscription agent for Japan: Kinokuniya Company, Ltd. Individuals have the option to order directly from the University of Chicago Press. Single copy rates: individuals \$18; institutions \$40.

Please direct subscription inquiries, requests for back issues, and address changes to Journals Division, University of Chicago Press, P.O. Box 37005, Chicago, IL 60637 (e-mail: [subscriptions@press.uchicago.edu](mailto:subscriptions@press.uchicago.edu); telephone: 773-753-3347 or toll-free in the United States and Canada 877-705-1878; fax: 773-753-0811 or toll-free 877-705-1879).

**Postmaster:** Send address changes to *Infection Control and Hospital Epidemiology*, University of Chicago Press, P.O. Box 37005, Chicago, IL 60637-2954.

Periodicals postage paid at Chicago, Illinois, and at an additional mailing office.

Published by the University of Chicago Press, Chicago, Illinois. © 2008 by the Society for Healthcare Epidemiology of America. All rights reserved. This publication is printed on acid-free paper.

## Aiming for CABSI Prevention at TargetBSI.com

Register Today for Webinars with  
National Thought Leaders:

### Centers for Disease Control and Prevention's (CDC) National Healthcare Safety Network (NHSN): What Are We Learning?

**Speaker:** Mary Andrus, BA, RN, CIC, Surveillance Solutions

### Mandatory Reporting of BSIs: Are We Improving Outcomes?

**Speaker:** Carlene A. Muto, M.D., M.S., Associate Professor of  
Medicine, Director, Infection Control and Hospital Epidemiology  
University of Pittsburgh

### The Joint Commission Standards and National Patient Safety Goals: Guidance for BSI Prevention, Monitoring and Outcomes

**Speaker:** Louise Kuhny, RN, MPH, MBA, CIC,  
Senior Associate Director, Standards Interpretation Group,  
The Joint Commission

### Why Are Vascular Devices Prone to Biofilm Contamination

**Speakers:** Marcia Ryder, PhD, MS, RN, Consultant  
Garth James, Center for Biofilm Engineering

## Experience the Quality Resources of TargetBSI.com

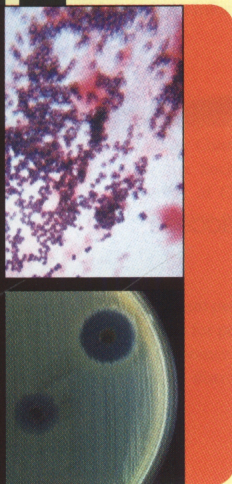
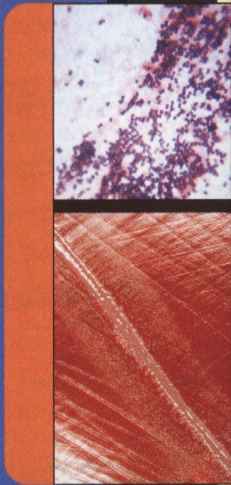
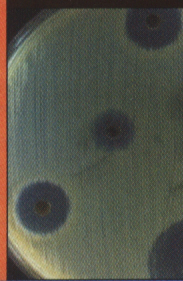
TargetBSI.com provides clinically relevant information on healthcare associated infections. All clinicians who manage or monitor vascular access catheters and related products & technology will find useful, practical infection prevention information at TargetBSI.com, including:

- Live and On-Demand Interactive Webinars with national thought leaders
- Target Topic presentations on selected clinical practice issues
- Best Practices Showcase: CABSI tools for you and your team
- Your personalized "My Resource History" to easily navigate the web site's resources



Supported by funding from  
Baxter Healthcare Corporation

# THE SOCIETY FOR HEALTHCARE EPIDEMIOLOGY OF AMERICA



Infection prevention and control in healthcare settings is a critical public health problem rapidly gaining interest.

**Are you current with the latest trends and evidence?**

**Join SHEA Today!**

Stay on top of emerging science and evidence-based strategies to prevent and control infections and to improve quality-of-care in your healthcare facility.

SHEA supports members' efforts to improve patient care and healthcare worker safety through:

- Research
- Education & Training
- Policy Development
- Evidence-based Practical Guidelines
- Mentorship and Professional Development

#### **Application Details**

[www.shea-online.org](http://www.shea-online.org)

[info@shea-online.org](mailto:info@shea-online.org)


(703) 684-1006

Annual membership offers:

- Subscription and online access to *Infection Control and Hospital Epidemiology (ICHE)*, the official journal of SHEA
- Epidemiology News and e-newsletter
- Discounted registration on SHEA educational programming
- Online member network and job board




*The Society for Healthcare Epidemiology of America*



# IDS A

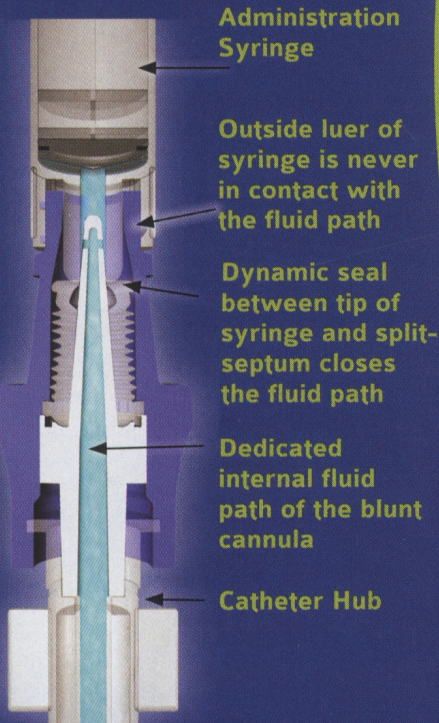
47<sup>th</sup> Annual Meeting





## WHAT MAKES THE CLAVE DIFFERENT?

The CLAVE has been engineered with fail-safe features which help mitigate bacterial transfer into the patient's catheter.



# CLAVE<sup>®</sup>

## Connector Technology



Don't be fooled by the sales gimmicks, look to the evidence.

- CLAVE supported a statistically significant lower BSI rate compared to another connector. (*Moore, 2009*)
- CLAVE demonstrates the best barrier to bacterial transfer compared to all connectors. (*Ryder, 2007*)
- CLAVE was proven to support a lower occurrence of bloodstream infections when compared to a positive pressure device. (*Maragakis, 2006*)
- CLAVE showed a lower occurrence of intraluminal catheter colonization in a randomized clinical trial. (*Bouza, 2003*)