

# ASTROPHYSICS AND SPACE SCIENCE

*An International Journal of Cosmic Physics*

EDITOR-IN-CHIEF: ZDENĚK KOPAL

CO-EDITORS: A. G. W. CAMERON / C. DE JAGER / M. KITAMURA /

J. KLECZEK / S. B. PIKEL'NER

VOLUME 14 No.1 NOVEMBER 1971



D. REIDEL PUBLISHING COMPANY / DORDRECHT-HOLLAND

# ASTROPHYSICS AND SPACE SCIENCE

*An International Journal of Cosmic Physics*

**Editor-in-Chief:** ZDENĚK KOPAL (Dept. of Astronomy, Univ. of Manchester, England)

**Co-Editors:** A. G. W. CAMERON (Grad. School of Science, Yeshiva Univ., New York, U.S.A.)

C. DE JAGER (University Observatory, Utrecht, Holland)

M. KITAMURA (Tokyo University Observatory, Mitaka, Tokyo, Japan)

J. KLECZEK (Astronomical Institute, Ondřejov, Czechoslovakia)

S. B. PIKEL'NER (Sternberg Astronomical Institute, Moscow, U.S.S.R.)

**Assistant Editor:** M. D. MOUTSOULAS (Dept. of Astronomy, Univ. of Manchester, England)

**Editorial Asst.:** MISS ELLEN B. FINLAY (Dept. of Astron., Univ. of Manchester, England)

**Editorial Board:** H. Alfvén, *Stockholm*

L. H. Aller, *Los Angeles*

W. Becker, *Basel*

P. L. Bhatnagar, *Simla*

L. Biermann, *München*

S. Biswas, *Bombay*

D. E. Blackwell, *Oxford*

K.-H. Böhm, *Seattle*

H. A. Brück, *Edinburgh*

S. Chandrasekhar, *Chicago*

S. A. Colgate, *Secorro*

L. Detre, *Budapest*

R. H. Dicke, *Princeton*

M. W. Feast, *Pretoria*

C. Fehrenbach, *Marseille*

P. B. Felgett, *Reading*

R. H. Garstang, *Boulder*

V. L. Ginzburg, *Moscow*

C. L. Goudas, *Patras*

L. Gratton, *Rome*

R. Hanbury Brown, *Sydney*

S. Hayakawa, *Nagoya*

W. Iwanowska, *Toruń*

E. Jensen, *Oslo*

F. D. Kahn, *Manchester*

E. K. Kharadse, *Abastumani*

R. Kippenhahn, *Göttingen*

G. E. Kron, *Flagstaff*

P. Ledoux, *Liège*

C. C. Lin, *Cambridge, Mass.*

B. A. Lindblad, *Lund*

R. A. Lyttleton, *Cambridge*

A. Maxwell, *Cambridge, Mass.*

L. Mestel, *Manchester*

E. R. Mustel, *Moscow*

J. C. Noyes, *Seattle*

D. J. K. O'Connell, *Vatican*

E. J. Öpik, *Armagh*

K. Osawa, *Okayama*

B. E. J. Pagel, *Herstmonceux*

S. L. Piotrowski, *Warsaw*

M. Plavec, *Los Angeles*

J. Rösch, *Paris*

L. Rosino, *Padua*

B. Rossi, *Cambridge, Mass.*

M. Rudkjøbing, *Aarhus*

J. Sahade, *Buenos Aires*

E. L. Schatzman, *Paris*

M. Schmidt, *Pasadena*

M. M. Shapiro, *Washington*

F. S. Singer, *Charlottesville*

E. Spiegel, *New York*

P. A. Sturrock, *Stanford*

P. A. Sweet, *Glasgow*

P. Swings, *Liège*

A. D. Thackeray, *Pretoria*

J. Tuominen, *Helsinki*

S. Ueno, *Los Angeles*

A. B. Underhill, *Green Belt*

H. C. Urey, *San Diego*

V. Vanýsek, *Prague*

K. O. Wright, *Victoria, B.C.*

K. Wurm, *Hamburg*

Ya. B. Zeldovich, *Moscow*

Articles for publication and communications relative to editorial matters should be sent to the editor-in-chief or to one of the co-editors.

Published monthly. Subscription price per volume (500 pp.) Dfl. 120,— (US \$ 37.20) including postage.

Annual subscription price (5 volumes) Dfl. 600,— (US \$ 186.00), including postage. Private persons

(no institutes, laboratories, libraries, etc.) may subscribe at the reduced rate of Dfl. 45,— (US \$ 13.95)

per volume, including postage. They should declare that the subscription is for their own personal use,

that it will not replace any existing library subscription and will not be put at the disposal of any library.

Subscriptions should be sent to the publisher D. Reidel Publishing Company, P.O. Box 17, Dordrecht-

Holland, or to any subscription agent. *Private subscriptions should be sent direct to the publisher.*

For advertisement rates apply to the publisher.

Copyright © 1971 by D. Reidel Publishing Company, Dordrecht-Holland.

All Rights Reserved.

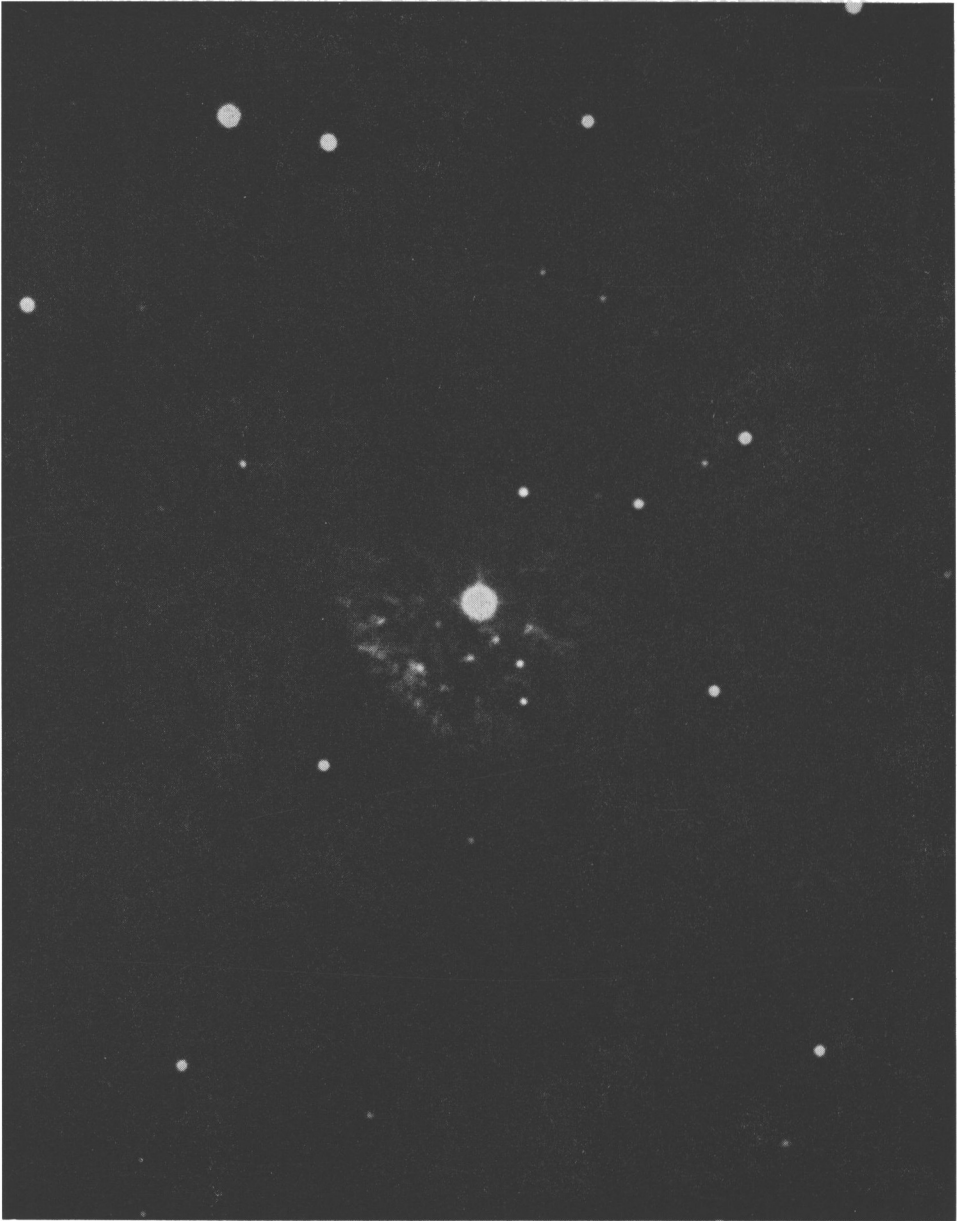
Printed in The Netherlands by D. Reidel, Dordrecht.

*Second Class Postage Paid at Long Island City, N.Y.*

*U.S. Mailing Agent: Air and Sea Freight Inc., P.O. Box 1305, Long Island City, N.Y. 11101*

ASTROPHYSICS AND SPACE SCIENCE

*Volume 14 No.1 1971*



Expanding nebulosity around Nova Persei 1901, photographed with the 200-in. Hale telescope at Mt. Palomar in November 1949. The post-Nova at its centre proved to be variable (GK Persei) – possibly eclipsing – with a period of 1.904 days.

*(Reproduced by courtesy of the Hale Observatories, California Institute of Technology)*