

Latin American Antiquity is available in JSTOR!



The Society for American Archaeology is pleased to announce the full-text, online version of *Latin American Antiquity* 1990–2008. To find out whether your library is a JSTOR participant, please email jstor-info@umich.edu. If you are not at a participating institution, as a current member you can access **both** the *Latin American Antiquity* and *American Antiquity* archives for just \$25 per calendar year. Members who have already paid for *Latin American Antiquity* can access *American Antiquity* at no additional charge. SAA members who live in Latin America or countries with discounted rates* can access the archive for just \$5.00 per calendar year.

To be able to search the *American Antiquity* and *Latin American Antiquity* archives in full-text, please print out the JSTOR form from SAAweb (<http://www.saa.org/AbouttheSociety/Publications/JSTOR/tabid/986/Default.aspx>), and fax +1 (202) 789-0284 or mail the signed form with payment to:

The Society for American Archaeology
Manager, Information Services
900 Second Street NE #12
Washington DC 20002-3560

Name: _____ Member ID #: _____

Address: _____ City: _____ Zip: _____

Country: _____ Phone: _____ Email: _____

Payment Type (Check one):

Check enclosed made out to SAA

Credit Card (circle type): AMEX Visa Mastercard

Card #: _____ Expiration Date: _____

Signature: _____

*Upon processing of payment, SAA will send you an email message with your password and instructions of how to access the archive.

**Agreement with SAA: I agree that I will use the database for my personal use only and will not share my user name, password, or access with other individuals or institutions.*

Signature: _____

JSTOR is an independent not-for-profit organization with a mission to create a trusted archive of scholarly journals and to increase access to those journals as widely as possible. The JSTOR database consists of the complete backfiles of over 240 scholarly journals and is available to researchers through libraries. For additional information on JSTOR, please visit www.jstor.org.

*Standard Rate applies to members living in Australia, Bahrain, Bermuda, Brunei, Canada, Cyprus, Israel, Japan, Korea, Kuwait, Libya, New Caledonia, New Zealand, Qatar, Saudi Arabia, Sultanate of Oman, Singapore, Taiwan, United Arab Emirates, United States, or Western Europe. Discount Rate applies to members living in Latin America or any other country not included above.

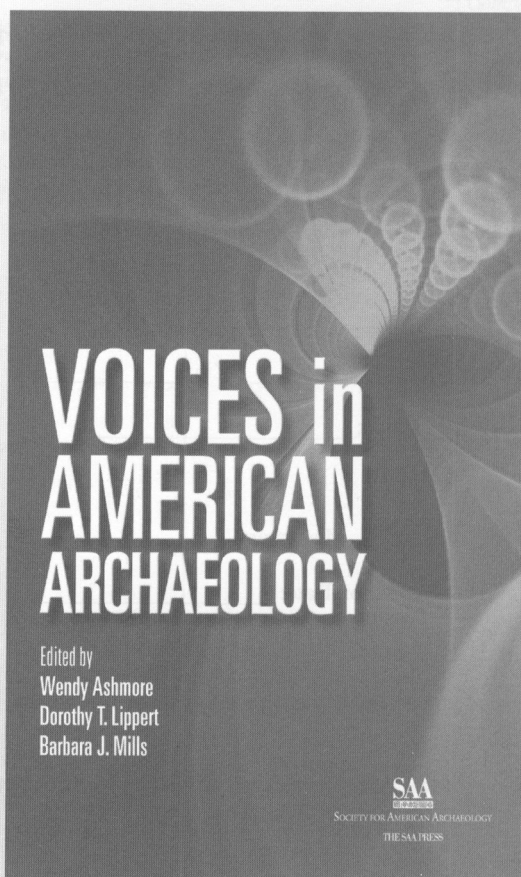


New from The SAA Press

Celebrating SAA's 75th Anniversary Meeting, *Voices in American Archaeology* features a diverse selection of authors addressing topics that contribute to larger dialogues among archaeologists and the wider public.

Contributions By:

Mitchell Allen
Jeffery H. Altschul
Wendy Ashmore
Jane E. Buikstra
Margaret W. Conkey
Robert Drennan
T. J. Ferguson
Maria Franklin
Rosemary A. Joyce
José Luis Lanata
Dorothy T. Lippert
Barbara J. Little
Lynn Meskell
Barbara J. Mills
Thomas C. Patterson
Timothy Pauketat
Robert Paynter
Jeremy A. Sabloff
Lynne Sebastian
Stephen W. Silliman
James E. Snead
Sander van der Leeuw
Joe E. Watkins
Michael Wilcox
Melinda A. Zeder
Larry J. Zimmerman



ISBN 978-0-932839-39-8
342 pp. 2010

Regular price: \$34.75; SAA Member Discount Price: \$24.75

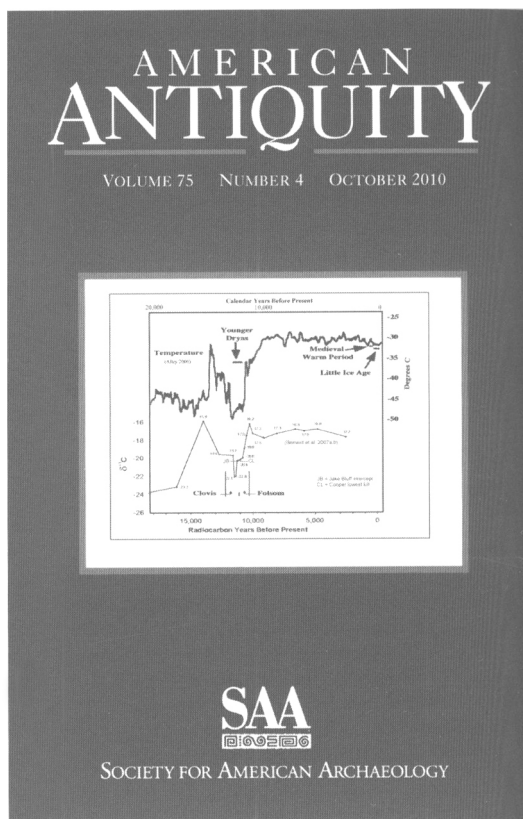
www.saa.org/thesaapress

ARTICLES

- 707 Eastern North American Population at ca. A.D. 1500
George R. Milner and George Chaplin
- 727 Social Transformation in Old Hawai'i: A Bottom-Up Approach
Thomas S. Dye
- 743 A Symmetry Analysis of Design Structure: 1,000 Years of Continuity and Change in Puebloan Ceramic Design
Dorothy K. Washburn, Donald W. Crowe, and Richard V. N. Ahlstrom
- 773 Changing Views of Drakensberg San Rock Art: Examining Landscape Use, Ritual Activity, and Contact through Multivariate Content-Based Spatial Analysis
Grant S. McCall
- 792 Land Use, Land Ideology: An Integrated Geographic Information Systems Analysis of Rock Art within South-Central California
David W. Robinson
- 819 Basketmaker and Archaic Rock Art of the Colorado Plateau: A Reinterpretation of Paleom imagery
Jennifer A. Kitchell
- 841 Evolutionary Ecology, Elite Feasting, and the Hohokam: A Case Study from a Southern Arizona Platform Mound
Deanna N. Grimstead and Frank E. Bayham
- 865 Footprints across the Black Rock: Temporal Variability in Prehistoric Foraging Territories and Toolstone Procurement Strategies in the Western Great Basin
Geoffrey M. Smith
- 886 Size-Dependence in Assemblage Measures: Essentialism, Materialism, and "She" Analysis in Archaeology
Michael J. Shott

REPORTS

- 907 Jake Bluff: Clovis Bison Hunting on the Southern Plains of North America
Leland C. Bement and Brian J. Carter
- 935 The Construction, Use, and Abandonment of Angel Site Mound A: Tracing the History of a Middle Mississippian Town through Its Earthworks
G. William Monaghan and Christopher S. Peebles



NOTICE TO AUTHORS

Latin American Antiquity publishes original papers on the archaeology, prehistory, and ethnohistory of Latin America, i.e., Mesoamerica, Central America, and South America, together with culturally affiliated adjacent regions. Papers may also treat more general theoretical and methodological issues with relevance to Latin America. Authors submit manuscripts to the editor for consideration as ARTICLES or REPORTS in English, Spanish, or Portuguese. Authors are required to submit manuscripts electronically through Editorial Manager® (<http://www.editorialmanager.com/laq>). Detailed information on policy, style, and technical matters of manuscript preparation is given in English and in Spanish in the "Editorial Policy, Information for Authors, and Style Guide for *American Antiquity* and *Latin American Antiquity*," available through the World Wide Web at <http://www.saa.org/Publications/StyleGuide/styframe.html>. For additional information, updates, or clarification, consult the managing editor at the SAA office in Washington, D.C.

BOARD OF DIRECTORS OF THE SOCIETY FOR AMERICAN ARCHAEOLOGY

Officers

President: MARGARET W. CONKEY, RPA, University of California, Department of Anthropology, MC #3710, Berkeley, CA 94720-3710

President-Elect: W. FREDRICK LIMP, University of Arkansas, 304 JBHT (Hunt Center), Fayetteville, AR 72701

Secretary: BARBARA J. MILLS, RPA, University of Arizona, Department of Anthropology, Haury Building, Tucson, AZ 85721-0030

Secretary-Elect: JANET E. LEVY, RPA, UNC at Charlotte, 9201 University City Blvd, Department of Anthropology, Charlotte, NC 28223-0001

Treasurer: CHRISTOPHER D. DORE, Ph.D, RPA, PO Box 17419, Tucson, AZ 85731-7419

Board Members at-Large

BARBARA ARROYO, Museo Popol Vuh Universidad Francisco Marroquin, GUA006, P.O. Box 02-5368, Miami, FL 33102

CORY BRETERNITZ, RPA, Paleowest, 649 N. 3rd Ave, Phoenix, AZ 85003-1522

PATRICIA L. CROWN, University of New Mexico, Department of Anthropology, MSC01 1040, Albuquerque, NM 87131-0001

KAREN S. HARTGEN, RPA, Hartgen Archeological Associates, Inc., 1744 Washington Ave., Rensselaer, NY 12144

ALSTON V. THOMS, Department of Anthropology, Texas A&M University, 309J Anthropology Building, 4352 TAMU, College Station, TX 77843-4352

MELINDA ZEDER, Smithsonian Institution, NMNH MRC 112, PO Box 37102, Department of Anthropology, Washington, DC 20013-7012

ARTICLES

- 355 Tierras Olvidadas: Chiribaya Landscape Engineering and Marginality in Southern Peru
Gregory Zaro, Kenneth C. Nystrom, Alfredo Bar, Adán Umire Alvarez, and Ana Miranda
- 375 Sex-Specific Phenotypic Variability and Social Organization in the Chiribaya of Southern Peru
Kenneth C. Nystrom and Christine M. Malcom
- 399 Inka Sacrifice and the Mummy of Salinas Grandes
Thomas Besom
- 423 Formative Adaptations, Diet, and Oral Health in the Azapa Valley of Northwest Chile
James T. Watson, Iván Muñoz Ovalle, and Bernardo T. Arriaza

REPORT

- 441 Uso de plantas psicoactivas en el norte de Chile: evidencia química del consumo de ayahuasca durante el Periodo Medio (500–1000 D.C.)
Juan P. Ogalde, Bernardo T. Arriaza, y Elia C. Soto

On the cover: The mummified body of a noble from Qulla Suyu; he has moderately long hair, wears a tunic and moccasins, sports an H-shaped pendant, and holds what may be a scepter (Guaman Poma 1980:1:268 [1615]), from “Inka Sacrifice and the Mummy of Salinas Grandes,” by Thomas Besom, page 415.

© The paper used in this publication meets the requirements of ANSI/NISO Z39.48-1992
(Permanence of Paper).