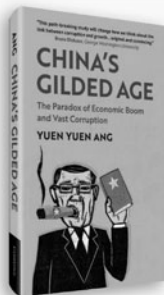
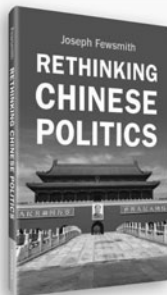


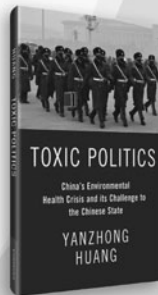
# Explore the latest in East Asian Politics from Cambridge



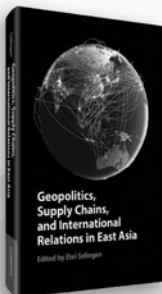
China's  
Gilded Age



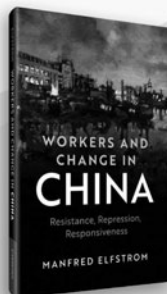
Rethinking  
Chinese Politics



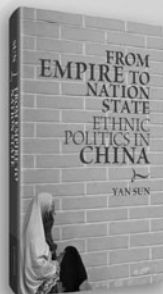
Toxic  
Politics



Geopolitics,  
Supply Chains, and  
International Relations  
in East Asia



Workers and  
Change in China



From Empire  
to Nation State



The Chinese  
Communist Party

Learn more about these titles  
and others at [Cambridge.org/AsiaPoli](https://Cambridge.org/AsiaPoli)

 CUP\_PoliSci

 CUPAcademic

 CambridgeUniversityPressPolitics



**CAMBRIDGE**  
UNIVERSITY PRESS

# ROYAL ASIATIC SOCIETY

## FELLOWSHIP APPLICATION FORM

Please complete this form clearly to apply for election, and send to:

The Director, Royal Asiatic Society, Stephenson Way, London NW1, 2HD UK.

[www.royalasiaticsociety.org](http://www.royalasiaticsociety.org)

Name .....

(Please indicate the surname, or part of the name it should be indexed under, by underlining)

Occupation .....

Address .....

.....

Email: .....

If you are a student please provide the name of your tutor.

Tick

I would like my name and contact details to be included in the fellows list in printed form and/or online

Signed .....

Date .....

## Membership and Subscription

The Society's Byelaws set out the membership requirements as follows:

1. Anyone wishing to become a Fellow must be nominated by a Fellow of the Society and a seconder, each acting on personal knowledge that the candidate is likely to be a suitable and useful Fellow. The nominating Fellow and the seconder shall address the Secretary in writing and give the candidate's name, status, occupation and address.
2. A candidate for Fellowship may, instead of being nominated by a Fellow of the Society, address an application in writing to the Secretary giving the required information above and supported by a letter of recommendation from his head of department or supervisor or other responsible person who need not be a Fellow of the Society.
3. It shall be within the power of the Council, on being satisfied as to the credentials of any particular candidate in exceptional circumstances, to dispense with these conditions.
4. The annual subscription is:

	£	p
Fellows residing in the British Isles . . . . .	90.00	
If paying by direct debit . . . . .	70.00	
Fellows residing abroad . . . . .	65.00	
If paying by direct debit . . . . .	50.00	
Fellows residing in South or Central Asia . . . . .	55.00	
If paying by direct debit . . . . .	40.00	
Student Fellows . . . . .	40.00	
If paying by direct debit . . . . .	30.00	
Affiliated Fellows residing at the same address, not receiving separate notices or the Journal . . . . .	35.00	
If paying by direct debit . . . . .	25.00	
Life Fellowship . . . . .	1,700.00	
5. The first payment of subscription is due on election, but if a candidate is elected in November or December of any year, the first annual subscription shall cover the year beginning 1<sup>st</sup> January next after his election.
6. Annual subscriptions shall be due on the first day of January of each year.

## NOTICE TO CONTRIBUTORS

The *Journal of the Royal Asiatic Society* promotes original, innovative, and rigorous research relating to Asia and all its cultures. It is a multi-disciplinary Journal published in four parts each year. It accepts specialist articles based on path-breaking new research, but the Editor also welcomes submissions that deploy inter-disciplinary and comparative research methods, or essays that make new knowledge and interpretations more readily accessible to a wider readership. From time to time the Journal publishes special issues containing articles on related themes originating from seminars, workshops, or conferences. Such issues may be the responsibility of a guest editor. The Royal Asiatic Society was founded in 1823 for 'the investigation and encouragement of the science, literature and the arts in relation to Asia': the Society's publications in journal and monograph form since then are judged by these criteria.

### **Recent Special Issues have included:**

Vol. 24 pt 3 'Isna 'Ashari and Isma'ili Shi'ism: from South Asia to the Indian Ocean'. Guest Editors: Justin Jones and Ali Usman Qasmi

Vol. 26 pts 1 and 2 'The Mongols and Post-Mongol Asia: Studies in Honour of David O. Morgan'. Guest Editors: Timothy May and Peter Jackson

Vol. 27 pt 4 'Feeling Modern: The History of Emotions in Urban South Asia'. Guest Editors: Elizabeth Chatterjee, Sneha Krishnan and Megan Eaton Robb

Vol. 28 pt 3 'From Outside the Persianate Centre: Vernacular Views on "Ālamgīr"'. Guest Editors: Anne Murphy and Heidi Pauwels

Vol. 30 pt 1 'The Mandarin Union Version, a Classic Chinese Biblical Translation'. Guest Editor: George Kam Wah Mak

Vol. 30 pt 3 'Historicizing Sayyid-ness: social status and Muslim identity in South Asia. Guest Editors: Laurence Gautier, Julien Levesque

For full details about the Journal, please refer to the instructions for contributors which can be found at: <https://www.cambridge.org/core/journals/journal-of-the-royal-asiatic-society/information/instructions-contributors> Submissions Papers should be submitted via the following website: <http://mc.manuscriptcentral.com/jras>. If there are any difficulties please contact the editorial office at [cdb@royalasiaticsociety.org](mailto:cdb@royalasiaticsociety.org) OR [journal@royalasiaticsociety.org](mailto:journal@royalasiaticsociety.org).

Submission of an article will be taken to imply that it has not been previously published and that it is not on offer to any other publisher.

Authors of articles published in the journal assign copyright to the Royal Asiatic Society (with certain rights reserved) and will receive copyright assignment forms for signature on acceptance of their papers. Authors are responsible for obtaining permission to reproduce any material in which they do not own copyright, to be used in both print and electronic media, and for ensuring that the appropriate acknowledgements are included in their manuscript. The Editor welcomes expressions of all shades of opinion, but responsibility for them rests with their author. All editorial communications should be addressed to [cdb@royalasiaticsociety.org](mailto:cdb@royalasiaticsociety.org) or [journal@royalasiaticsociety.org](mailto:journal@royalasiaticsociety.org), or The Editorial Office, The Royal Asiatic Society, 14 Stephenson Way, London NW1 2HD, UK.

Printed in Great Britain by Bell & Bain Ltd, Glasgow.

This journal issue has been printed on FSC-certified paper and cover board. FSC is an independent, nongovernmental, not-for-profit organization established to promote the responsible management of the world's forests. Please see [www.fsc.org](http://www.fsc.org) for information.

# Journal of the Royal Asiatic Society

VOLUME 31 · PART 4 · OCTOBER 2021

## CONTENTS

Fancy Footwork: Furniture Patterns Going to and from Gandhāra BY DORIS METH SRINIVASAN	647
The organisation of stage stations in Central Asian colonial provinces of the Tibetan Empire according to Pelliot tibétain 1096r BY JOANNA BIALEK	693
The Jewish communities of Safed and Jerusalem during the fourteenth century BY MICHAEL EHRLICH	711
Interreligious Relations with No Self: A Mystical Path to Omnilogue? BY RAFAL K. STEPIEN	721
The Qizilbāsh and their Shah: The Preservation of Royal Prerogative during the Early Reign of Shah Tahmāsp BY GREGORY ALDOUS	743
Memory of destroyed Khorsabad, Victor Place, and the story of a shipwreck BY BÜLENT GENÇ	759
An Ottoman Historian in Troubled Times. Five Letters from Paul Wittek to Sydney N. Fisher, 1938–1949: The Testimony of a Friendship BY COLIN HEYWOOD	775
Membership born in the Interstitial Spaces of the British Empire: The Indian Question in South Africa from 1860 to 1960 BY MARINA MARTIN	787
Expedition turned Invasion: The 1888 Sikkim Expedition through British, Indian and Chinese eyes BY YI MENG CHENG	803
Colonialism and Compromise: The Shanghai Municipal Police and the Arrest of Communists, 1927–37 BY PETER KWOK-FAI LAW	831
Tipu Sultan's female entourage under East India Company rule BY JENNIFER HOWES	855
BOOK REVIEWS	875

[www.royalasiaticsociety.org](http://www.royalasiaticsociety.org)

### Cambridge Core

For further information about this journal  
please go to the journal website at:  
[cambridge.org/jra](http://cambridge.org/jra)



**MIX**  
Paper from  
responsible sources  
**FSC® C007785**

**CAMBRIDGE**  
UNIVERSITY PRESS