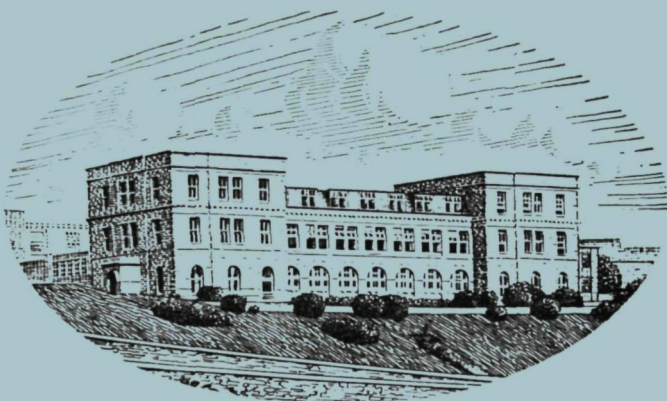


JOURNAL OF THE  
MARINE BIOLOGICAL ASSOCIATION  
OF THE UNITED KINGDOM



THE PLYMOUTH LABORATORY

VOLUME 44, No. 2

*(issued June 1964)*

CAMBRIDGE  
AT THE UNIVERSITY PRESS

1964

*Price Eighty shillings net*

(U.S.A. \$13.50)

*Annual Subscription for Volume (of three parts); £11 (U.S.A. \$35.00)*

# MARINE BIOLOGICAL ASSOCIATION OF THE UNITED KINGDOM

## PATRON

H.R.H. THE PRINCE PHILIP, DUKE OF EDINBURGH, F.R.S.

## OFFICERS AND COUNCIL

*President:* Prof. C. F. A. PANTIN, Sc.D., D.Sc., Dr Univ., F.R.S.

### *Vice-Presidents*

The Earl of IVEAGH, K.G., C.B., C.M.G., F.R.S.

Sir NICHOLAS E. WATERHOUSE, K.B.E.

Prof. A. V. HILL, C.H., O.B.E., Sc.D., LL.D., F.R.S.

Sir EDWARD J. SALISBURY, Kt., C.B.E., D.Sc.,

LL.D., F.R.S.

Major E. G. CHRISTIE-MILLER

MORLEY H. NEALE, C.B.E.

Prof. Sir JAMES GRAY, Kt., C.B.E., M.C., Sc.D.,  
LL.D., F.R.S.

G. M. GRAHAM, C.M.G., O.B.E.

Prof. Sir ALISTER HARDY, Kt., D.Sc., F.R.S.

Prof. C. M. YONGE, C.B.E., D.Sc., F.R.S.

### *Honorary Members*

Dr H. B. BIGELOW

Prof. LOUIS FAGE

E. H. E. HAVELOCK, C.B., C.B.E.

Prof. Sir ALISTER HARDY, Kt., D.Sc., F.R.S.

Dr A. G. HUNTSMAN

Prof. HANS PETTERSSON, For. Mem. R.S.

Dr A. C. REDFIELD

Prof. C. M. YONGE, C.B.E., D.Sc., F.R.S.

## COUNCIL

### **Elected Members**

H. A. COLE, D.Sc.

R. I. CURRIE

Prof. J. E. HARRIS, C.B.E., Ph.D., F.R.S.

Prof. A. V. HILL, C.H., O.B.E., Sc.D., LL.D., F.R.S.

Prof. B. KATZ, M.D., D.Sc., F.R.S.

R. D. KEYNES, Ph.D., F.R.S.

C. E. LUCAS, C.M.G., D.Sc.

J. W. G. LUND, D.Sc., Ph.D., F.R.S.

C. H. MORTIMER, Dr. phil., D.Sc., F.R.S.

Prof. Sir JOHN T. RANDALL, Kt., D.Sc., F.R.S.

Prof. J. E. SMITH, Sc.D., F.R.S.

N. TEBBLE

H. G. VEVERS, M.B.E., D.Phil.

Prof. W. F. WHITTARD, D.Sc., F.R.S.

Prof. C. M. YONGE, C.B.E., D.Sc., F.R.S.

### **Governors**

H. GARDNER, C.B.E. (Ministry of Agriculture,  
Fisheries and Food)

The Worshipful Company of Fishmongers:

The Prime Warden

Sir EDWARD CHADWYCK-HEALEY, Bt., M.C.

Col. Sir JOHN CAREW POLE, Bt., D.S.O., T.D.

Prof. Sir ALISTER C. HARDY, Kt., D.Sc., F.R.S.  
(Oxford University)

S. SMITH, Ph.D. (Cambridge University)

EDWARD HINDLE, Sc.D., F.R.S. (British  
Association)

Prof. G. P. WELLS, Sc.D., F.R.S. (Zoological  
Society)

Prof. Sir JAMES GRAY, Kt., C.B.E., M.C., Sc.D.,  
LL.D., F.R.S. (Royal Society)

Prof. A. V. HILL, C.H., O.B.E., Sc.D., LL.D., F.R.S.  
(Physiological Society)

*Hon. Treasurer:* Sir EDWARD CHADWYCK-HEALEY, Bt., M.C., The Mill House,  
Hook, Basingstoke, Hants.

*Secretary:* F. S. RUSSELL, C.B.E., D.S.C., D.F.C., D.Sc., LL.D., F.R.S., The Laboratory,  
Citadel Hill, Plymouth, Devon

## SCIENTIFIC STAFF

*Director:* F. S. RUSSELL, C.B.E., D.S.C., D.F.C., D.Sc., LL.D., F.R.S.

D. P. WILSON, D.Sc., F.R.P.S. (*Zoologist*)

L. H. N. COOPER, D.Sc., F.R.I.C., F.G.S., F.R.S.  
(*Chemist*)

G. M. SPOONER, M.B.E., M.A., F.R.E.S. (*Zoologist*)

MARY W. PARKE, D.Sc., Ph.D., F.L.S. (*Botanist*)

P. G. CORBIN, B.A. (*Zoologist*)

J. A. C. NICOL, D.Sc., M.A., D.Phil. (*Experimental  
Zoologist*)

E. J. DENTON, Sc.D., B.A., B.Sc., Ph.D., F.R.S.  
(*Physiologist*)

N. A. HOLME, M.A. (*Zoologist*)

G. R. FORSTER, B.Sc. (*Zoologist*)

F. A. J. ARMSTRONG, F.R.I.C. (*Chemist*)

E. D. S. CORNER, M.Sc., Ph.D. (*Biochemist*)

A. J. SOUTHWARD, D.Sc., Ph.D. (*Zoologist*)

T. I. SHAW, M.A., Ph.D. (*Physiologist*)

J. V. HOWARTH, B.Sc. (*Physiologist*)

Q. BONE, B.A. (*Zoologist*)

G. T. BOALCH, B.Sc., Ph.D. (*Botanist*)

G. W. BRYAN, B.Sc., Ph.D. (*Zoologist*)

A. G. DAVIES, B.Sc., Ph.D. (*Special Appointment:  
Physical Chemist*)

J. H. WICKSTEAD, B.Sc., Ph.D., Department of Technical Co-operation (*Zoologist*)

June 1964