

*The Journal of*

**THE HELICOPTER  
ASSOCIATION OF  
GREAT BRITAIN**

CONTENTS include

SOME DESIGN ASPECTS OF TANDEM  
ROTOR HELICOPTERS

By J D Sibley and C H Jones

THE PROGRAMME OF DEVELOPMENT TESTING  
FOR A HELICOPTER

By T G G Newbery

CIERVA MEMORIAL PRIZE ESSAY COMPETITION 1958

IS MAN-POWERED ROTATING WING FLIGHT  
A FUTURE POSSIBILITY

By C H Naylor

MAN-POWERED HELICOPTERS

By B S Shenstone and R H Whitby

LONDON

4, THE SANCTUARY,  
WESTMINSTER, S W 1

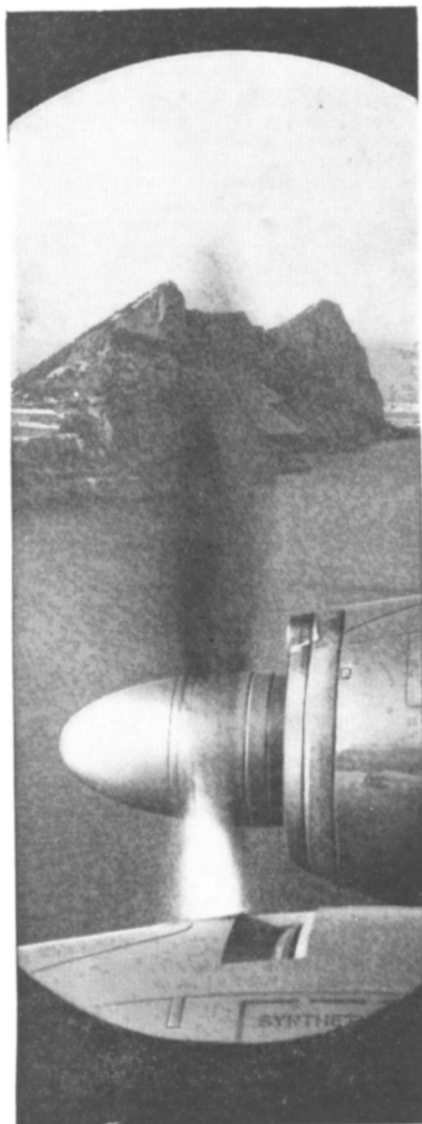
Vol 13 No 5 OCTOBER 1959

# Up in the air...

all over the world

the majority of modern aircraft  
depend on Rotax Units

Rotax have been specialists in  
the design and manufacture of  
electrical and starting systems for  
aircraft for more than 40 years  
Today, all Rotax facilities for  
research, development, manufacture  
and a comprehensive advisory  
service are at the service of the  
aircraft industries of the world



**ROTAX**

## Complete Electrical and Starting Systems for Aircraft

Rotax Limited Willesden Junction London N W 10  
Lucas Rotax (Australia) Pty Ltd Melbourne and Sydney Australia  
Lucas Rotax Ltd Toronto Montreal and Vancouver Canada



Wherever helicopters fly on regular services whether from city centres or airfields in difficult terrain, the need for an all-altitude navigation system of high accuracy is vital. Only Decca provides such precise information continuously with pictorial presentation in the cockpit.



Being a low frequency hyperbolic navigation system Decca gives high-accuracy coverage down to ground level unaffected by weather or intervening obstacles. The system is so precise that it can be also used as an approach aid over more than a million square miles of Europe.



Because of Decca's high accuracy at all altitudes it is the only system that provides both close lateral separation in flight and flexibility in routing.

## **THE DECCA NAVIGATOR**

*the world's most accurate  
navigation system*

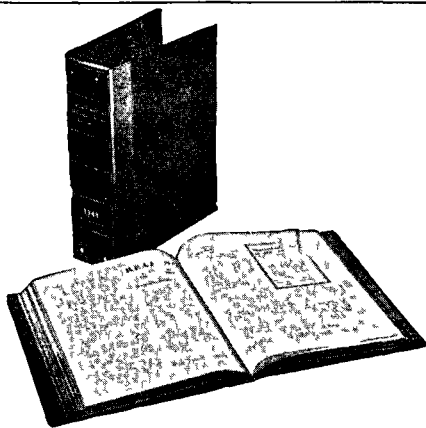
THE DECCA NAVIGATOR COMPANY LTD LONDON

# **HELICOPTER DYNAMICS AND AERODYNAMICS**

By **P R PAYNE** This is the first really comprehensive treatment of helicopter theory by a practising designer of rotary wing aircraft. Correlating theory and practical results throughout, the author has constantly kept in mind the requirements of the industry. The book which is more up to date than anything yet published on the subject contains the first accounts in book form of cantilever stiff hinged high flapping pin offset and other advanced forms of rotor, and also the rotor blade flutter. No prior knowledge of helicopter theory is required of the reader who is taken up to the most advanced theories and methods used in the modern design office.

*From booksellers 84/- net*

**PITMAN** Parker Street, Kingsway, London, W C 2



## **PROTECT**

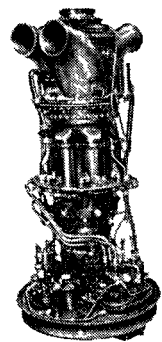
## **YOUR JOURNALS**

The Binders illustrated, in which the Association Journals can be readily clipped for preservation and easy reference, are available from the Association's Offices. The price is 15/- (Overseas postage extra), and this includes the Title in gold lettering on the spine.

**4 The Sanctuary, Westminster, S W 1**



Whether it's at one end, as in the quietly efficient Westland Wessex whether it's at both ends, as in the outstanding Bristol 192 whether it's upright, horizontal or in any position in between, the Napier Gazelle free turbine engine will always satisfy the exacting demands of helicopter operation. Designed specifically for use in helicopters, the Napier Gazelle, with its "any angle" installation, relieves the designer of many accepted limitations and gives him more opportunity to make proper use of fuselage space.



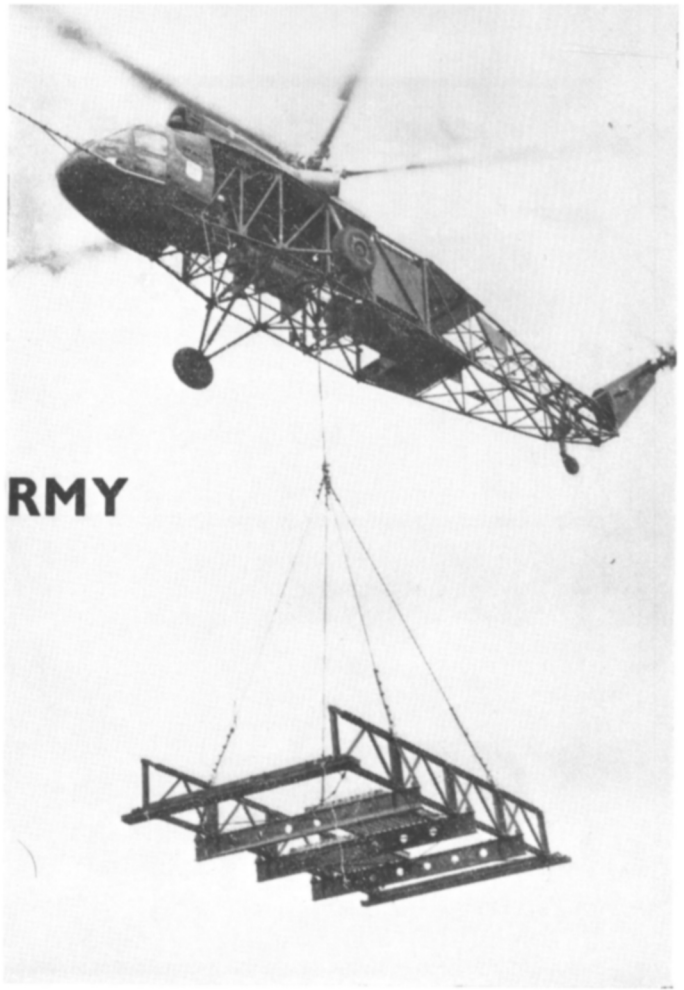
## **NAPIER** **GAZELLE** FREE TURBINE ENGINE

*D. NAPIER & SON LIMITED LONDON W3 A member of the English Electric Aviation Group*

# UPLIFT FOR THE ARMY

The Crane-Transporter version of the Westminster typifies a new concept for helicopter utilisation in military logistics. It meets the requirements for the rapid transport of heavy equipment from supply bases to forward areas in support of main forces or to small units operating independently over

scattered areas. Missiles, big guns, vehicles, field hospitals, living huts and a variety of other field equipment all come within the lifting capacity of the Westminster, and can be held at the hover throughout the helicopter's duration. In short, it is designed to take on the tough, heavy-duty transport work for the Army, and dispose of the supply problems posed firstly, by the absence of airfields and secondly, by terrain impassable to surface transport. The Westminster is powered by twin turbine engines and is able to operate on one of them with full load if need be. Picture shows the experimental prototype of the Crane-Transporter lifting an Army bridging section weighing 6,140 lbs.



## WESTLAND

*a great name in* **HELICOPTERS**

WESTLAND AIRCRAFT LIMITED • YEOVIL • ENGLAND

# The Journal of THE HELICOPTER ASSOCIATION OF GREAT BRITAIN

*President*  
N E ROWE CBE DIC BSc MIMechE ACGI MInst 1 FCGI  
FR AeS FIAeS Whit Ex

*Past Presidents*  
E Mensforth CBE MA MIMechE FRAeS MIPE  
J G Wear CMG CBE FRAeS  
Marshal of the RAF Lord Douglas of Kirtleside GCB MC DFC  
The Rt Hon Lord Brabazon of Tara GBE MC PC Hon FRAeS

*Vice Presidents*  
G S Hislop PhD BSc (Eng) AR CST MIMechE FRAeS  
Lt Col J W Richardson AFR AeS

**Offices 4, The Sanctuary, Westminster, S W 1      Tel Abbey 5160**

**VOL 13 No 5**

**October, 1959**

**PRICE 10/6**

**THE COUNCIL**

*Chairman*

J A J Bennett DSc PhD  
FR AeS

B H Arkell AFR AeS  
R A C Brie AFR AeS  
AFI AeS

J A Cameron  
D M Davies, MA (Cantab)  
AFR AeS

L G Frise BSc FRAeS  
AFI AeS

M H C Gordon  
R Hafner FRAeS

N J G Hill AMIMechE  
ARAeS MCAI

C T D Hosegood  
A McClements AR CST  
MIMechE

J W Richardson AFR AeS  
W H Sear

J S Shapiro Dipl Ing  
AFR AeS

D L Hollis Williams BSc  
FR AeS

*Hon Secretary*

R H Whitby DIC AR CSc  
BSc FRAeS

*Hon Treasurer*

W G Leslie ACIS

*Asst Secretary*

Miss S Rigby

*Journal Hon Editor*

B H Arkell AFR AeS

*Technical Editors*

D M Davies MA, AFR AeS  
A McClements AR CST  
MIMechE

J S Shapiro Dipl Ing  
AFR AeS

R H Whitby DIC AR CSc  
BSc, FRAeS

*Librarian*

R W L Cure

*Auditors*

W B Keen & Co

The opinions expressed in papers read before the Association and in the discussions also recorded in this Journal are not necessarily those of the Executive Council or of the Association as a whole

## CONTENTS

|  | <i>Page</i> |
|--|-------------|
| SOME DESIGN ASPECTS OF TANDEM ROTOR HELICOPTERS<br>By J D SIBLEY and C H JONES | 225         |
| DISCUSSION   | 252         |
| THE PROGRAMME OF DEVELOPMENT TESTING FOR A HELICOPTER<br>By T G G NEWBERY      | 262         |
| DISCUSSION   | 280         |
| GIERVA MEMORIAL PRIZE ESSAY COMPETITION 1958                                   |             |
| IS MAN-POWERED ROTATING WING FLIGHT A FUTURE POSSIBILITY<br>By C H NAYLOR      | 294         |
| MAN-POWERED HELICOPTERS<br>By B S SHENSTONE and R H WHITBY                     | 305         |
| BOOK REVIEW  | 315         |
| THE THIRTEENTH ANNUAL DINNER OF THE HELICOPTER ASSOCIATION OF GREAT BRITAIN    | 316         |
| CORRESPONDENCE   | 319         |

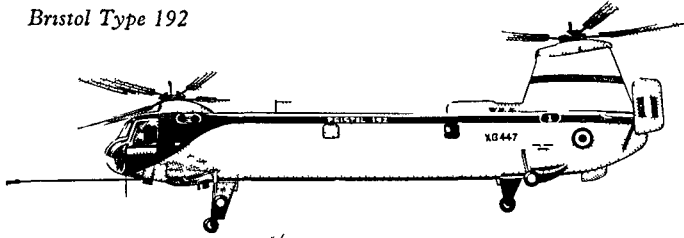
### OBJECTS OF THE ASSOCIATION

The objects of the Association are to collect compile and disseminate information of a technical and semi technical nature pertaining to Helicopters and all other types of Rotating Wing Aircraft. The Association aims to work in close co operation with existing Aeronautical Bodies on matters affecting its objects and it may act as an Advisory Body in the promotion of legislation calculated to be of benefit to the development of Rotating Wing Aircraft

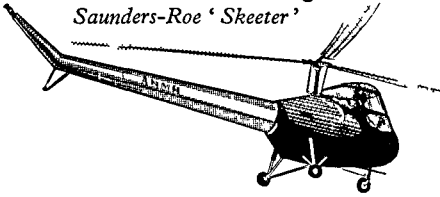
*Publications Manager*

S H Pilton, Effingham House Arundel Street, London WC 2

*Bristol Type 192*

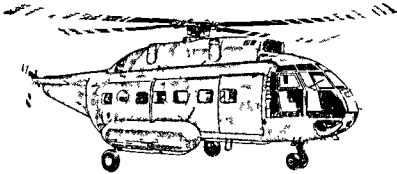


*Saunders-Roe 'Skeeter'*

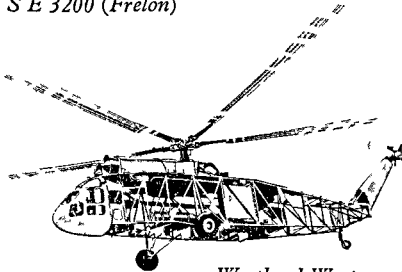


## **Gears for Rotor Drives**

*ENV manufacture precision spiral bevel gears of the type used in all British shaft-driven helicopters and Continental helicopters in current production. These include the Saunders-Roe Skeeter and P 531, Westland Widgeon, Wessex, Whirlwind and Westminster, Bristol Sycamore and 192, Sud Aviation Alouette II, Alouette III and Frelon.*



*SE 3200 (Frelon)*



*Westland Westminster*



*ENV ENGINEERING COMPANY LIMITED, HYTHE ROAD, WILLESDEN LONDON, N W 10  
Telephone LADbroke 3622*

*AP109*